

Low Loss SMA Male Right Angle to SMA Male Weatherproof Cable Assembly with Silicone using LMR-240 Coax , LF Solder



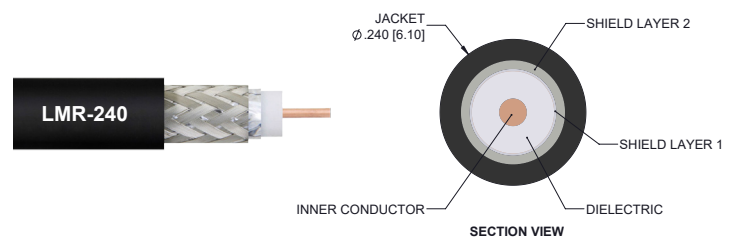
LCCA9865LF/WP

Configuration

- Connector 1: SMA Male Right Angle
- Connector 2: SMA Male
- Cable Type: LMR-240
- Coax Flex Type: Flexible

Features

- Max Frequency 6 GHz
- Shielding Effectivity > 90 dB
- 84% Phase Velocity
- Double Shielded
- PE Jacket
- Silicone Connector Boot
- IP68 Rated



Description

The L-com LCCA9865LF/WP is a weatherproof low loss cable assembly that comes with SMA male connection with weatherproof boot on one end and SMA male with weatherproof boot on the other. L-com's RF coaxial cable assembly products are designed for typical use, production, laboratory test and measurement, defense/military, aerial antenna towers, etc. The low loss cable has a 50 Ohm impedance and is specifically ready for quicker shipment than most in the industry can provide.

This weatherproof low loss RF cable assembly operates at a maximum frequency of 6 GHz. Our RF cable assembly has a PE jacket with 0.240 inches diameter. The SMA male to SMA male cable assembly LCCA9865LF/WP is built with LMR-240 coax, which has a flexible design. This RF cable assembly with 0.5 inches diameter has copper as cable's inner conducting material and PE (F) dielectric type. The weatherproof boot low loss cable can operate at a temperature range of -40 to 85 degrees C. Additional dimensions, specifications, and CAD drawings for this LCCA9865LF/WP low loss RF cable are available on our downloadable PDF datasheet.

L-com stocks a wide selection of weatherproof low loss cable assemblies that ship the same business day as ordered from our warehouse. Make your online purchase right now to take advantage of our same-day shipping. For further information on similar products, our expert technical support and knowledgeable sales team can help you get the ideal SMA male to SMA male cable assembly as per your requirements.

Electrical Specifications

Description	Minimum	Typical	Maximum	Units
Frequency Range	DC		6	GHz
VSWR			1.4:1	
Velocity of Propagation		84		%
RF Shielding	90			dB
Capacitance		24.2 [79.4]		pF/ft [pF/m]
Inductance		0.06 [0.2]		uH/ft [uH/m]
DC Resistance Inner Conductor		3.2 [10.5]		Ohms/1000ft [Ohms/Km]
DC Resistance Outer Conductor		3.89 [12.76]		Ohms/1000ft [Ohms/Km]
Dielectric Withstanding Voltage (DC)			1,500	Vdc

Low Loss SMA Male Right Angle to SMA Male
Weatherproof Cable Assembly with Silicone
using LMR-240 Coax , LF Solder



LCCA9865LF/WP

Electrical Specifications

Description	Minimum	Typical	Maximum	Units
Jacket Spark			5,000	Vrms

Specifications by Frequency

Part Number	Length	Description	F1	F2	F3	F4	F5	Units	Weight (lbs)
			Frequency					MHz	
LCCA9865LF/WP	Custom Lengths Available	Insertion Loss (Typ.)	0.039	0.076	0.079	0.129	0.204	dB/ft	
			0.13	0.25	0.26	0.43	0.67	dB/m	
LCCA9865LF/WP-FT1	12 In	Insertion Loss (Typ.)	0.34	0.38	0.38	0.43	0.51	dB	0.567
LCCA9865LF/WP-FT2	24 In	Insertion Loss (Typ.)	0.38	0.46	0.46	0.56	0.71	dB	0.6
LCCA9865LF/WP-FT3	36 In	Insertion Loss (Typ.)	0.42	0.53	0.54	0.69	0.92	dB	0.633
LCCA9865LF/WP-FT4	48 In	Insertion Loss (Typ.)	0.46	0.61	0.62	0.82	1.12	dB	0.666
LCCA9865LF/WP-FT5	60 In	Insertion Loss (Typ.)	0.5	0.68	0.7	0.95	1.32	dB	0.699

The insertion loss data for the base model does not include loss due to the connectors. Each length includes insertion loss due to the connectors.

Loss due to Connector 1:	0.2 dB
Loss due to Connector 2:	0.1 dB
Base Weight:	0.567 pounds
Additional Weight per Inch:	0.00275 pounds

Mechanical Specifications

Cable Assembly

Width/Diameter	0.5 in [12.7 mm]
Weight	0.567 lbs [257.19 g]

Cable

Cable Type	LMR-240
Impedance	50 Ohms
Inner Conductor Type	Solid
Inner Conductor Material and Plating	Copper
Dielectric Type	PE (F)
Number of Shields	2
Shield Layer 1	Aluminum Tape
Shield Layer 2	Tinned Copper Braid
Jacket Material	PE
Jacket Diameter	0.24 in [6.1 mm]
One Time Minimum Bend Radius	0.75 in [19.05 mm]
Repeated Minimum Bend Radius	2.5 in [63.5 mm]
Bending Moment	0.25 lbs-ft [0.34 N-m]
Flat Plate Crush	20 lbs/in [0.36 Kg/mm]
Tensile Strength	80 lbs [36.29 Kg]

Low Loss SMA Male Right Angle to SMA Male
Weatherproof Cable Assembly with Silicone
using LMR-240 Coax , LF Solder



LCCA9865LF/WP

Connectors

Description	Connector 1	Connector 2
Type	SMA Male Right Angle	SMA Male
Option	Weatherproof Boot	Weatherproof Boot
Specification	MIL-STD-348	
Impedance	50 Ohms	50 Ohms
Configuration	Right Angle	Straight
Contact Material and Plating	Brass/Phosphor Bronze, Gold	Brass, Gold
Contact Plating Specification	50 µin minimum	
Dielectric Type	Teflon	PTFE
Body Material and Plating	Brass, Tri-Metal	Brass, Gold
Body Plating Specification	80 µin minimum	
Coupling Nut Material and Plating	Brass, Tri-Metal	Brass, Gold
Coupling Nut Plating Specification	80 µin minimum	
Boot Material	Silicone	Silicone

Environmental Specifications

Operating Range Temperature	-40 to +85 deg C
Ingress Protection (IP) Rating	IP68

Compliance Certifications (see [product page](#) for current document)

Plotted and Other Data

Notes:
Values at 25°C, sea level.

Low Loss SMA Male Right Angle to SMA Male Weatherproof Cable Assembly with Silicone using LMR-240 Coax , LF Solder



LCCA9865LF/WP

Typical Performance Data

How to Order

Part Number Configuration:

LCCA9865LF/WP - xx uu



Example: LCCA9865LF/WP-12 = 12 inches long cable
LCCA9865LF/WP-100cm = 100 cm long cable

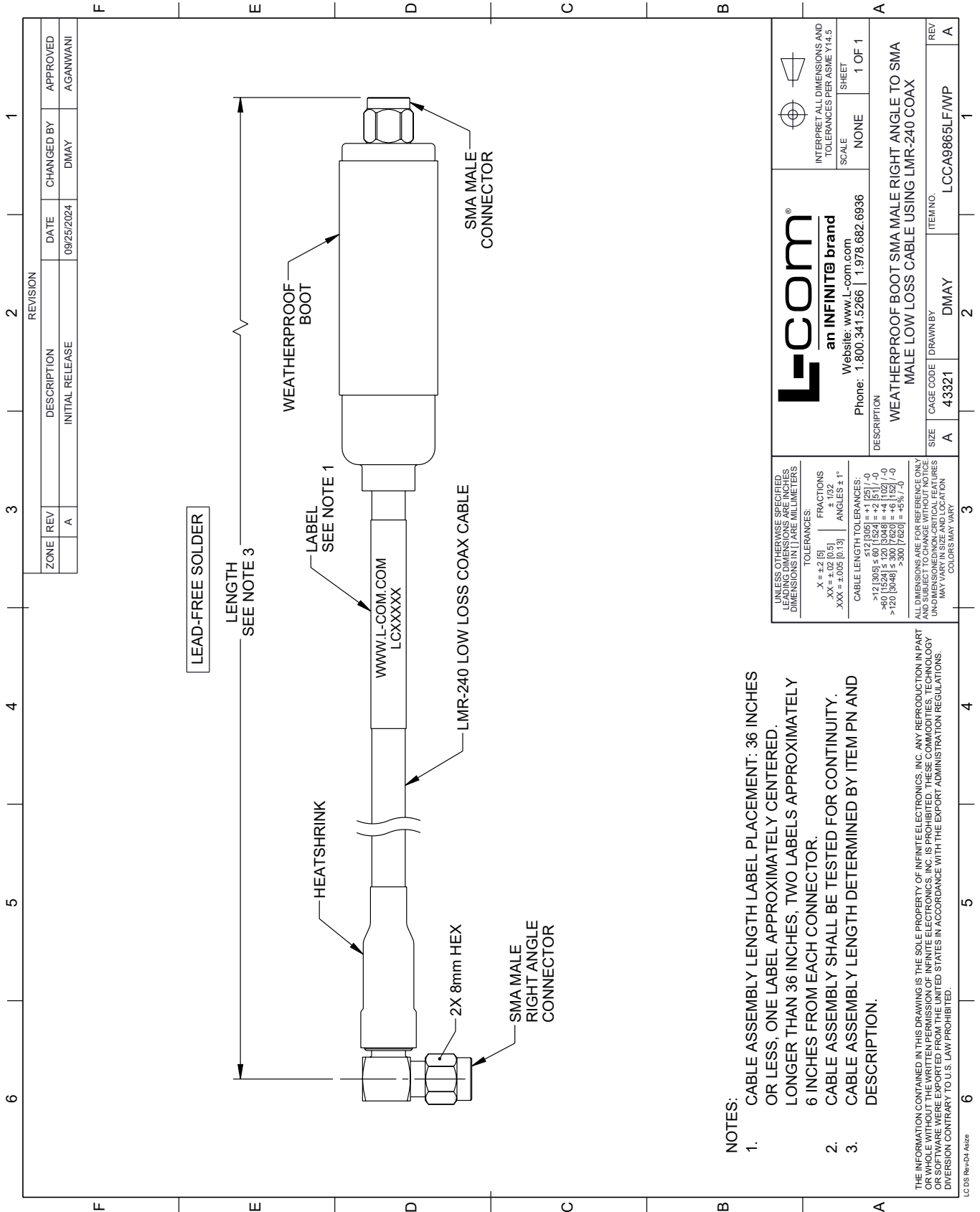
Low Loss SMA Male Right Angle to SMA Male Weatherproof Cable Assembly with Silicone using LMR-240 Coax , LF Solder from L-com has same day shipment for domestic and International orders. Our portfolio includes coaxial cable assemblies, connectors, adapters and custom products as well as lightning and surge protectors, NEMA rated enclosures, and an RF product line which includes antennas, amplifiers, passive, and active components.

URL: <https://www.l-com.com/sma-male-sma-male-cable-assembly-lcca9865lf-wp-p.aspx>

The information contained within this document is accurate to the best of our knowledge and representative of the part described herein. It may be necessary to make modifications to the part and/or the documentation of the part in order to implement improvements. L-com reserves the right to make such changes as required. Unless otherwise stated, all specifications are nominal. L-com does not make any representation or warranty regarding the suitability of the part described herein for any particular purpose, and L-com does not assume liability arising out of the use of any part or document.

LCCA9865LF/WP CAD Drawing

Low Loss SMA Male Right Angle to SMA Male Weatherproof Cable Assembly with Silicone using LMR-240 Coax , LF Solder



L-com
an INFINITE brand
Website: www.L-com.com
Phone: 1.800.341.5266 | 1.978.682.6936

INTERPRET ALL DIMENSIONS AND TOLERANCES PER ASME Y14.5

SCALE NONE SHEET 1 OF 1

UNLESS OTHERWISE SPECIFIED, LEADING DIMENSIONS ARE IN INCHES. DIMENSIONS IN [] ARE MILLIMETERS.

TOLERANCES:
 .X = ±.2 [5]
 .XX = ±.02 [0.5]
 .XXX = ±.005 [0.13]
 FRACTIONS ± 1/32
 ANGLES ± 1°

CABLE LENGTH TOLERANCES:
 >12 [305] ≤ 60 [1524] = ±.1 [25] / -0
 >60 [1524] ≤ 120 [3048] = ±.4 [102] / -0
 >120 [3048] ≤ 300 [7620] = ±.6 [15] / -0

ALL DIMENSIONS ARE FOR REFERENCE ONLY. UNLESS OTHERWISE SPECIFIED, DIMENSIONS ARE NON-CRITICAL FEATURES. DIMENSIONS MAY VARY. COLORS MAY VARY.

DESCRIPTION: WEATHERPROOF BOOT SMA MALE RIGHT ANGLE TO SMA MALE LOW LOSS CABLE USING LMR-240 COAX

REV	A
ITEM NO.	LCCA9865LF/WP
SCALE	NONE
SHEET	1 OF 1
SIZE	A
CAGE CODE	43321
DRAWN BY	DMAY

- NOTES:**
- CABLE ASSEMBLY LENGTH LABEL PLACEMENT: 36 INCHES OR LESS, ONE LABEL APPROXIMATELY CENTERED. LONGER THAN 36 INCHES, TWO LABELS APPROXIMATELY 6 INCHES FROM EACH CONNECTOR.
 - CABLE ASSEMBLY SHALL BE TESTED FOR CONTINUITY.
 - CABLE ASSEMBLY LENGTH DETERMINED BY ITEM PN AND DESCRIPTION.

THE INFORMATION CONTAINED IN THIS DRAWING IS THE SOLE PROPERTY OF INFINITE ELECTRONICS, INC. ANY REPRODUCTION IN PART OR WHOLE WITHOUT THE WRITTEN PERMISSION OF INFINITE ELECTRONICS, INC. IS PROHIBITED. THESE COMMODITIES, TECHNOLOGY OR SOFTWARE WERE EXPORTED FROM THE UNITED STATES IN ACCORDANCE WITH THE EXPORT ADMINISTRATION REGULATIONS. DIVERSION CONTRARY TO U.S. LAW PROHIBITED.

LC 05 Rev-D4 Altize