

Low Loss SMA Male to N Male Right Angle Cable Assembly using LMR-195-UF Coax With Times Microwave Components with HeatShrink



LCCA9905

Configuration

- Connector 1: SMA Male
- Connector 2: N Male Right Angle
- Cable Type: LMR-195-UF
- Coax Flex Type: Flexible

Description

L-com's LCCA9905 is a low loss SMA male to N male right angle cable assembly using LMR-195-UF coax with Times Microwave components with heatshrink and ships same-day. The LMR-195-UF coax of this SMA cable uses the foam PE dielectric with a VoP of 74%, resulting in very low insertion loss compared to solid dielectrics. These flexible RF cable assemblies are ideal for applications where flexure is required. Our L-com SMA to N cable assembly has a male to male gender configuration with flexible LMR-195-UF series coax and operates to 5.8 GHz. The double shield of this SMA cable is layered by tinned copper braid over aluminum tape providing shielding effectiveness greater than 90dB. This right angle N cable interface on the LMR-195-UF coax allows for easier connections in tight spaces.

Custom versions of this SMA male to SMA male cable, along with the rest of L-com's other RF assemblies, can also be built and shipped same day. Other available RF cable assembly value added services from L-com include connector orientation or clocking, heat shrink booting and custom labeling. RF testing can also be performed to document the electrical performance of your cable assembly. Contact a sales representative for testing or custom RF cable quotes. Part number LCCA9905 L-com Low Loss SMA Male to N Male Right Angle Cable Assembly using LMR-195-UF Coax With Times Microwave Components with HeatShrink data sheet PDF includes details of the RF product specifications, CAD drawing(s) and dimensions below.

Electrical Specifications

Description	Minimum	Typical	Maximum	Units
Frequency Range	DC		5.8	GHz
VSWR			1.4:1	
Velocity of Propagation		74		%
RF Shielding	90			dB
Group Delay		1.27 [4.17]		ns/ft [ns/m]
Capacitance		25.4 [83.33]		pF/ft [pF/m]
Inductance		0.064 [0.21]		uH/ft [uH/m]
DC Resistance Inner Conductor		9.5 [31.17]		Ohms/1000ft [Ohms/Km]
DC Resistance Outer Conductor		4.9 [16.08]		Ohms/1000ft [Ohms/Km]
Dielectric Withstanding Voltage (DC)			1,000	Vdc
Jacket Spark			3,000	Vrms
Input Power (Peak)			2.5	KWatts

Specifications by Frequency

Description	F1	F2	F3	F4	F5	Units
Frequency	0.25	0.5	1	2.5	5.8	GHz

Low Loss SMA Male to N Male Right Angle Cable Assembly using LMR-195-UF Coax With Times Microwave Components with HeatShrink



LCCA9905

Specifications by Frequency

Description	F1	F2	F3	F4	F5	Units
Insertion Loss (Typ.)	0.067	0.097	0.138	0.226	0.356	dB/ft
	0.22	0.32	0.45	0.74	1.17	dB/m

Specifications by Frequency

Part Number	Length	Description	F1	F2	F3	F4	F5	Units	Weight (lbs)
			Frequency		100	250	500	1000	
LCCA9905	Custom Lengths Available	Insertion Loss (Typ.)	0.041	0.067	0.097	0.138	0.226	dB/ft	
			0.14	0.22	0.32	0.46	0.75	dB/m	
LCCA9905-12	12 inch	Insertion Loss (Typ.)	0.35	0.37	0.4	0.44	0.53	dB	0.133
LCCA9905-24	24 inch	Insertion Loss (Typ.)	0.39	0.44	0.5	0.58	0.76	dB	0.154
LCCA9905-36	36 inch	Insertion Loss (Typ.)	0.43	0.51	0.6	0.72	0.98	dB	0.175
LCCA9905-60	60 inch	Insertion Loss (Typ.)	0.51	0.64	0.79	0.99	1.43	dB	0.217
LCCA9905-300	300 inch	Insertion Loss (Typ.)	1.33	1.98	2.73	3.75	5.95	dB	0.637

The insertion loss data for the base model does not include loss due to the connectors. Each length includes insertion loss due to the connectors.

Loss due to Connector 1:	0.1 dB
Loss due to Connector 2:	0.2 dB
Base Weight:	0.133 pounds
Additional Weight per Inch:	0.00175 pounds

Electrical Specification Notes:

Insertion Loss does not include the loss of the connectors. Insertion Loss is estimated as 0.1 dB per straight connector and 0.2 dB per right angle connector.

Mechanical Specifications

Cable Assembly

Width/Diameter	0.5 in [12.7 mm]
Weight	0.133 lbs [60.33 g]

Cable

Cable Type	LMR-195-UF
Impedance	50 Ohms
Inner Conductor Type	Stranded
Inner Conductor Material and Plating	Copper
Dielectric Type	Foam PE
Number of Shields	2
Shield Layer 1	Aluminum Tape
Shield Layer 2	Tinned Copper Braid
Jacket Material	TPE
Jacket Diameter	0.195 in [4.95 mm]
One Time Minimum Bend Radius	0.5 in [12.7 mm]
Repeated Minimum Bend Radius	2 in [50.8 mm]
Bending Moment	0.1 lbs-ft [0.14 N-m]

Low Loss SMA Male to N Male Right Angle Cable Assembly using LMR-195-UF Coax With Times Microwave Components with HeatShrink



LCCA9905

Connectors

Description	Connector 1	Connector 2
Type	SMA Male	N Male Right Angle
Impedance	50 Ohms	50 Ohms
Configuration	Straight	Right Angle
Contact Material and Plating	Brass, Gold	Brass, Gold
Contact Plating Specification	ASTM B488	50 µin. minimum
Dielectric Type	Teflon	Teflon
Body Material and Plating	Passivated Stainless Steel	Brass, Tri-Metal
Body Plating Specification		80 µin. minimum
Coupling Nut Material and Plating	Passivated Stainless Steel	Brass, Tri-Metal
Coupling Nut Plating Specification		80 µin. minimum
Hex Size	5/16 Inch	

Environmental Specifications

Operating Range Temperature -40 to +85 deg C

Compliance Certifications (see [product page](#) for current document)

Plotted and Other Data

Notes:
Values at 25°C, sea level.

Low Loss SMA Male to N Male Right Angle Cable Assembly using LMR-195-UF Coax With Times Microwave Components with HeatShrink



LCCA9905

Typical Performance Data

How to Order

Part Number Configuration:

LCCA9905

- xx

uu

Unit of Measure:
cm = Centimeters
<blank> = Inches
Length
Base Number

Example: LCCA9905-12 = 12 inches long cable
LCCA9905-100cm = 100 cm long cable

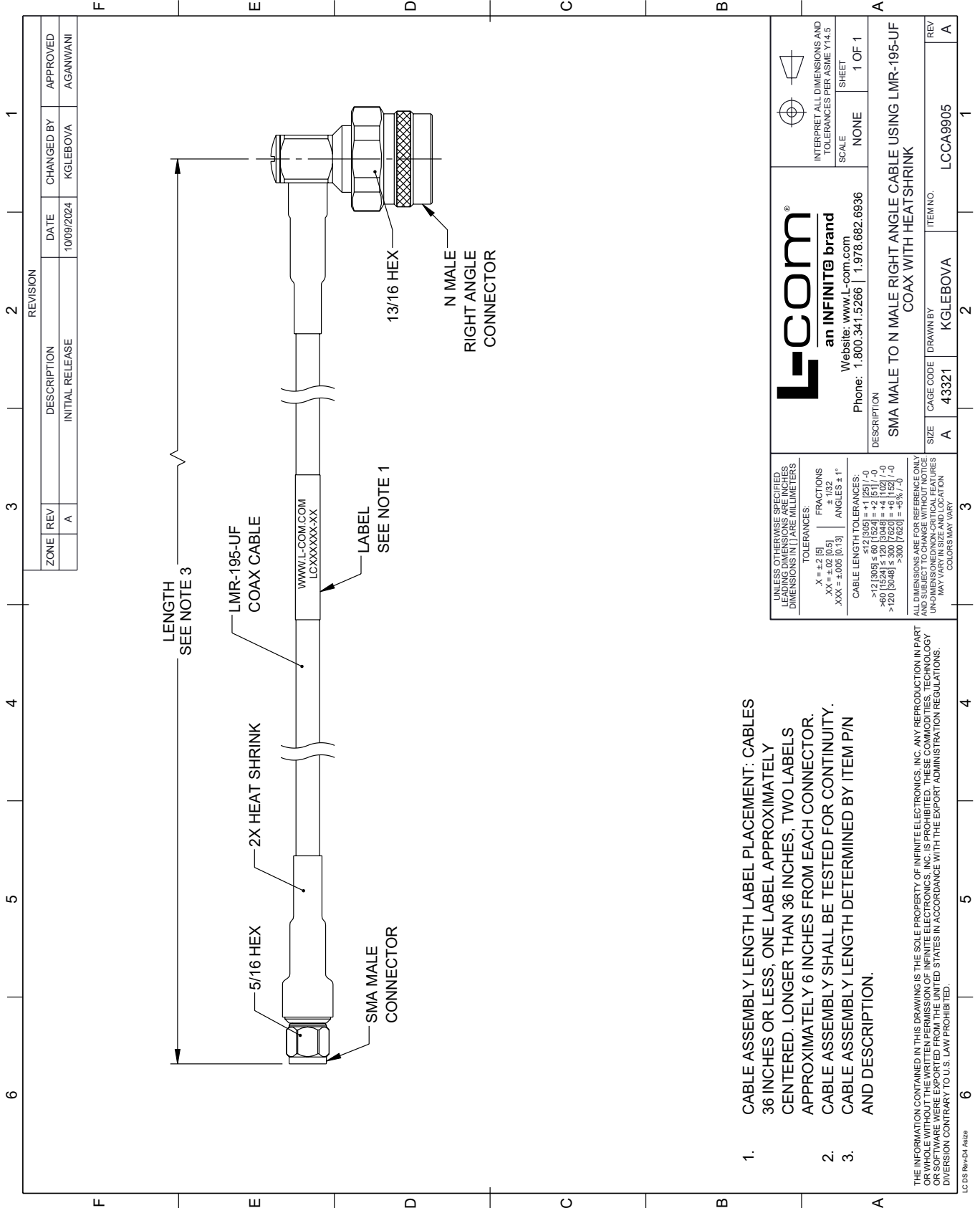
Low Loss SMA Male to N Male Right Angle Cable Assembly using LMR-195-UF Coax With Times Microwave Components with HeatShrink from L-com has same day shipment for domestic and International orders. Our portfolio includes coaxial cable assemblies, connectors, adapters and custom products as well as lightning and surge protectors, NEMA rated enclosures, and an RF product line which includes antennas, amplifiers, passive, and active components.

URL: <https://www.l-com.com/sma-male-n-male-cable-assembly-lmr-lcca9905-p.aspx>

The information contained within this document is accurate to the best of our knowledge and representative of the part described herein. It may be necessary to make modifications to the part and/or the documentation of the part in order to impliment improvements. L-com reserves the right to make such changes as required. Unless otherwise stated, all specifications are nominal. L-com does not make any representation or warranty regarding the suitability of the part described herein for any particular purpose, and L-com does not assume liability arising out of the use of any part or document.

LCCA9905 CAD Drawing

Low Loss SMA Male to N Male Right Angle Cable Assembly using LMR-195-UF Coax With Times Microwave Components with HeatShrink



1. CABLE ASSEMBLY LENGTH LABEL PLACEMENT: CABLES 36 INCHES OR LESS, ONE LABEL APPROXIMATELY CENTERED. LONGER THAN 36 INCHES, TWO LABELS APPROXIMATELY 6 INCHES FROM EACH CONNECTOR.
2. CABLE ASSEMBLY SHALL BE TESTED FOR CONTINUITY.
3. CABLE ASSEMBLY LENGTH DETERMINED BY ITEM P/N AND DESCRIPTION.

THE INFORMATION CONTAINED IN THIS DRAWING IS THE SOLE PROPERTY OF INFINITE ELECTRONICS, INC. ANY REPRODUCTION IN PART OR WHOLE WITHOUT THE WRITTEN PERMISSION OF INFINITE ELECTRONICS, INC. IS PROHIBITED. THESE COMMODITIES, TECHNOLOGY OR SERVICES WERE EXPORTED FROM THE UNITED STATES IN ACCORDANCE WITH THE EXPORT ADMINISTRATION REGULATIONS. DIVERSION CONTRARY TO U.S. LAW PROHIBITED.

LC 05 Rev-D4 Altize

<p>L-com an INFINITE brand Website: www.L-com.com Phone: 1.800.341.5266 1.978.682.6936</p>	<p>INTERPRET ALL DIMENSIONS AND TOLERANCES PER ASME Y14.5</p>	<p>SCALE: NONE</p> <p>SHEET: 1 OF 1</p>	
<p>DESCRIPTION: SMA MALE TO N MALE RIGHT ANGLE CABLE USING LMR-195-UF COAX WITH HEATSHRINK</p>			
SIZE: A	CAGE CODE: 43321	DRAWN BY: KGLEBOVA	ITEM NO.: LCCA9905
REV: A			REV: A

UNLESS OTHERWISE SPECIFIED, LEADING DIMENSIONS ARE IN INCHES. DIMENSIONS IN [] ARE MILLIMETERS.

TOLERANCES:

.X = ±.2 [5]	FRACTIONS ± 1/32
.XX = ±.02 [0.5]	ANGLES ± 1°
.XXX = ±.005 [0.13]	

CABLE LENGTH TOLERANCES:

>12 [305] ≤ 60 [1524] = +.1 [25] / -0
>60 [1524] ≤ 120 [3048] = +.4 [102] / -0
>120 [3048] ≤ 300 [7620] = +.6 [15] / -0

ALL DIMENSIONS ARE FOR REFERENCE ONLY. UNDIMENSIONED NON-CRITICAL FEATURES MAY VARY IN SIZE AND LOCATION. COLORS MAY VARY.