

12.4 GHz SMA Male Right Angle Connector Solder Attachment for .085 Semi-Rigid, LC085TB, RG405



LCCN3121

Configuration

- SMA Male Connector
- MIL-STD-348A
- 50 Ohms
- Right Angle Body Geometry
- .085 Semi-rigid, LC085TB, RG405 Interface Type
- Solder/Solder Attachment
- 5/16 inch Hex

Description

The L-com LCCN3121 SMA male connector has a stainless steel body for telecommunications, data communication, general-purpose test, industrial fields, and rack and panel mount applications. This RF connector has a right angle body style and brass contact with gold plating. This threaded standard coaxial connector works on a maximum frequency of 12.4 GHz and provides an excellent maximum VSWR of 1.23.

The 12.4 GHz SMA connector is available in a 0.650-inch length, 0.315-inch width, and 0.441-inch height. The .085 semi-rigid coax connector allows developers to configure and customize their signal connections however they desire. This SMA connector with solder attachment has a high-quality construction and an impedance of 50 ohms.

The LCCN3121 .085 semi-rigid coax RF connector has gold body plating. This 12.4 GHz stainless steel coaxial connector comes with PTFE insulation. The SMA male connector weighs 0.013 pounds and is most used in USB software-defined radio dongles, handheld radios, mobile phone antennas, Wi-Fi antenna systems, and microwave systems.

L-com has the largest in-stock selection of RF and coaxial connectors with same-day shipping for domestic and international orders. We currently have a variety of antenna, audio/video, Ethernet, fiber optic, and USB connectors in our portfolio that are ready to ship today. For further information on similar products, our expert technical support and knowledgeable sales team can help you get the high-quality RF connector that meets your requirements.

Electrical Specifications

Description	Minimum	Typical	Maximum	Units
Frequency Range	DC		12.4	GHz
VSWR			1.23:1	
Operating Voltage (AC)			335	Vrms

Mechanical Specifications

Size

Length	0.65in	[16.51mm]
Width/Dia.	0.315in	[8.00mm]
Height	0.441in	[11.2mm]
Weight	0.013lbs	[5.9g]
Mating Torque	3 to 5in-lbs	0.34 to 0.57Nm

Click the following link (or enter part number in "SEARCH" on website) to obtain additional part information including price, inventory and certifications: [12.4 GHz SMA Male Right Angle Connector Solder Attachment for .085 Semi-Rigid, LC085TB, RG405 LCCN3121](#)

12.4 GHz SMA Male Right Angle Connector Solder Attachment for .085 Semi-Rigid, LC085TB, RG405



LCCN3121

Material Specifications

Description	Material	Plating
Contact	Brass	Gold 50 µin minimum
Insulation	PTFE	
Body	Stainless Steel	Gold 30 µin minimum
Coupling Nut	Brass	Nickel 100 µin minimum

Environmental Specifications

Temperature

Operating Range -65deg C to +165deg C

Compliance Certifications (see [product page](#) for current document)

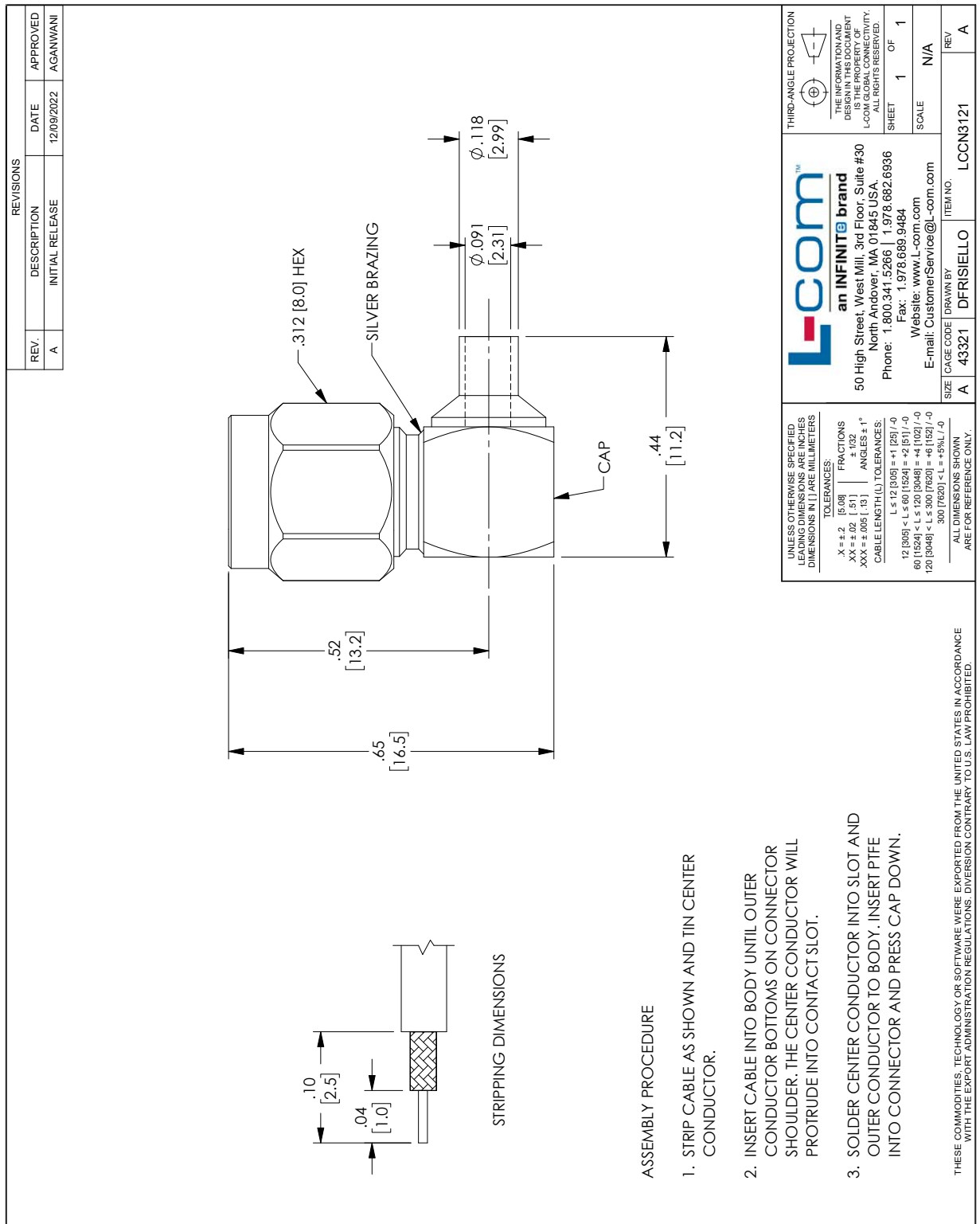
Plotted and Other Data

12.4 GHz SMA Male Right Angle Connector Solder Attachment for .085 Semi-Rigid, LC085TB, RG405 from L-com has same day shipment for domestic and International orders. Our portfolio includes coaxial cable assemblies, connectors, adapters and custom products as well as lightning and surge protectors, NEMA rated enclosures, and an RF product line which includes antennas, amplifiers, passive, and active components. Click the following link (or enter part number in “SEARCH” on website) to obtain additional part information including price, inventory and certifications: 12.4 GHz SMA Male Right Angle Connector Solder Attachment for .085 Semi-Rigid, LC085TB, RG405 LCCN3121

URL: <https://www.l-com.com/12.4-ghz-sma-male-right-angle-connector-solder-attachment-.085-semi-rigid-lc085tb-rg405-lccn3121-p.aspx>

The information contained within this document is accurate to the best of our knowledge and representative of the part described herein. It may be necessary to make modifications to the part and/or the documentation of the part in order to implement improvements. L-com reserves the right to make such changes as required. Unless otherwise stated, all specifications are nominal. L-com does not make any representation or warranty regarding the suitability of the part described herein for any particular purpose, and L-com does not assume liability arising out of the use of any part or document. The information contained within this document is accurate to the best of our knowledge and representative of the part described herein. It may be necessary to make modifications to the part and/or the documentation of the part in order to implement improvements. L-com reserves the right to make such changes as required. Unless otherwise stated, all specifications are nominal. L-com does not make any representation or warranty regarding the suitability of the part described herein for any particular purpose, and L-com does not assume liability arising out of the use of any part or document.

L-com CAD Drawing



L-com
an INFINITE brand

50 High Street, West Mill, 3rd Floor, Suite #30
North Andover, MA 01845 USA
Phone: 1.800.341.5266 | 1.978.682.6936
Fax: 1.978.689.9484
Website: www.L-com.com
E-mail: CustomerService@L-com.com

THIRD-ANGLE PROJECTION

THE INFORMATION AND DESIGN CONTAINED HEREIN IS THE PROPERTY OF L-COM GLOBAL CONNECTIVITY. ALL RIGHTS RESERVED.

SHEET 1 OF 1
SCALE N/A

ITEM NO. LCCN3121
REV A

SIZE A
CAGE CODE 43321
DRAWN BY DFRISIELLO