

12.4 GHz SMA Male Right Angle Connector Clamp/Solder Attachment for RG174, RG316, RG188, 0.100 inch, 100 series, LMR-100



LCCN3122

Configuration

- SMA Male Connector
- MIL-C-39012
- 50 Ohms
- Right Angle Body Geometry
- RG174, RG316, RG188, .100 inch, 100 Series, 100 Series, LMR-100 Interface Type
- Clamp/Solder Attachment
- 5/16 inch Hex

Description

The L-com LCCN3122 SMA male connector has a brass body for telecommunications, data communication, general-purpose test, industrial fields, and rack and panel mount applications. This RF connector has a right angle body style and brass contact with gold over nickel plating. This threaded standard coaxial connector works on a maximum frequency of 12.4 GHz and provides an excellent maximum VSWR of 1.53.

The 12.4 GHz SMA connector is available in a 0.664-inch length, 0.312-inch width, and 0.574-inch height. The RG174 coax connector allows developers to configure and customize their signal connections however they desire. This SMA connector with clamp/solder attachment has a high-quality construction and an impedance of 50 ohms.

The LCCN3122 RG174 coax RF connector has nickel body plating. This 12.4 GHz brass coaxial connector comes with PTFE insulation. The SMA male connector weighs 0.007 pounds and is most used in USB software-defined radio dongles, handheld radios, mobile phone antennas, Wi-Fi antenna systems, and microwave systems.

L-com has the largest in-stock selection of RF and coaxial connectors with same-day shipping for domestic and international orders. We currently have a variety of antenna, audio/video, Ethernet, fiber optic, and USB connectors in our portfolio that are ready to ship today. For further information on similar products, our expert technical support and knowledgeable sales team can help you get the high-quality RF connector that meets your requirements.

Electrical Specifications

| Description | Minimum | Typical | Maximum | Units |
|--------------------------------------|----------------|---------|---------|-------|
| Frequency Range | DC | | 12.4 | GHz |
| VSWR | | | 1.53:1 | |
| Operating Voltage (AC) | | | 250 | Vrms |
| Dielectric Withstanding Voltage (AC) | | | 750 | Vrms |
| High Potential Voltage | | | 500 | Vrms |
| | at 4 and 7 MHz | | | |
| @@Corona Discharge | | | 190 | Vrms |
| | at 70,000 feet | | | |
| Insulation Resistance | 5,000 | | | MOhms |

Electrical Specification Notes:

Insertion loss = 0.15 x sqrt(fGHz) dB up to 6 GHz.//RF leakage: 60 dB min at 2.5 GHz.

Click the following link (or enter part number in "SEARCH" on website) to obtain additional part information including price, inventory and certifications: [12.4 GHz SMA Male Right Angle Connector Clamp/Solder Attachment for RG174, RG316, RG188, 0.100 inch, 100 series, LMR-100 LCCN3122](#)

12.4 GHz SMA Male Right Angle Connector Clamp/Solder Attachment for RG174, RG316, RG188, 0.100 inch, 100 series, LMR-100



LCCN3122

Mechanical Specifications

| | | |
|---------------|--------------|----------------|
| Size | | |
| Length | 0.664in | [16.87mm] |
| Width/Dia. | 0.312in | [7.92mm] |
| Height | 0.574in | [14.58mm] |
| Weight | 0.007lbs | [3.18g] |
| Mating Cycles | 500Cycles | |
| Mating Torque | 3 to 5in-lbs | 0.34 to 0.57Nm |

Material Specifications

| Description | Material | Plating |
|--------------|----------|------------------------------------|
| Contact | Brass | Gold over Nickel 30 µin minimum |
| Insulation | PTFE | |
| Body | Brass | Nickel 100 µin minimum |
| Coupling Nut | Brass | Nickel 100 µin minimum |

Environmental Specifications

Temperature

| | |
|-----------------|--------------------------------------|
| Operating Range | -65deg C to +165deg C |
| Humidity | MIL-STD-202, Method 106 |
| Shock | MIL-STD-202, Method 213, Condition I |
| Vibration | MIL-STD-202, Method 204, Condition D |
| Thermal Shock | MIL-STD-202, Method 107, Condition B |
| Salt Spray | MIL-STD-202, Method 101, Condition B |

Click the following link (or enter part number in "SEARCH" on website) to obtain additional part information including price, inventory and certifications:
[12.4 GHz SMA Male Right Angle Connector Clamp/Solder Attachment for RG174, RG316, RG188, 0.100 inch, 100 series, LMR-100 LCCN3122](#)

12.4 GHz SMA Male Right Angle Connector Clamp/Solder Attachment
for RG174, RG316, RG188, 0.100 inch, 100 series, LMR-100



LCCN3122

Compliance Certifications (see [product page](#) for current document)

Plotted and Other Data

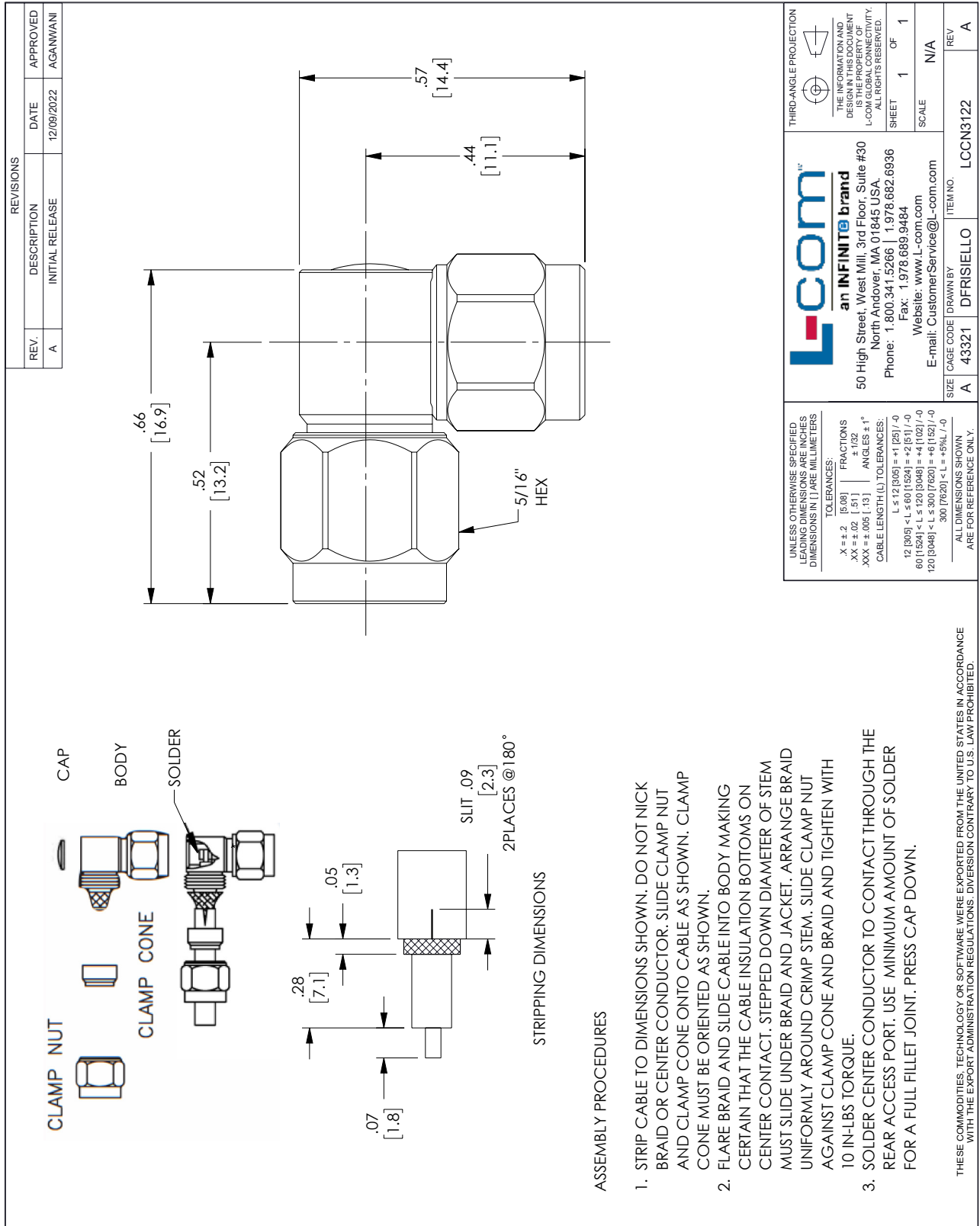
12.4 GHz SMA Male Right Angle Connector Clamp/Solder Attachment for RG174, RG316, RG188, 0.100 inch, 100 series, LMR-100 from L-com has same day shipment for domestic and International orders. Our portfolio includes coaxial cable assemblies, connectors, adapters and custom products as well as lightning and surge protectors, NEMA rated enclosures, and an RF product line which includes antennas, amplifiers, passive, and active components. Click the following link (or enter part number in "SEARCH" on website) to obtain additional part information including price, inventory and certifications: 12.4 GHz SMA Male Right Angle Connector Clamp/Solder Attachment for RG174, RG316, RG188, 0.100 inch, 100 series, LMR-100 LCCN3122

URL: <https://www.l-com.com/12.4-ghz-sma-male-right-angle-connector-clamp-solder-attachment-rg174-rg316-rg188-0.100-inch-100-series-lmr-100-lccn3122-p.aspx>

The information contained within this document is accurate to the best of our knowledge and representative of the part described herein. It may be necessary to make modifications to the part and/or the documentation of the part in order to implement improvements. L-com reserves the right to make such changes as required. Unless otherwise stated, all specifications are nominal. L-com does not make any representation or warranty regarding the suitability of the part described herein for any particular purpose, and L-com does not assume liability arising out of the use of any part or document.

12.4 GHz SMA Male Right Angle Connector Clamp/Solder Attachment for RG174, RG316, RG188, 0.100 inch, 100 series, LMR-100

L-com CAD Drawing



L-com
an **INFINITE** brand

50 High Street, West Mill, 3rd Floor, Suite #30
North Andover, MA 01845 USA
Phone: 1.800.341.5266 | 1.978.682.6936
Fax: 1.978.689.9484
Website: www.L-com.com
E-mail: CustomerService@L-com.com

THIRD-ANGLE PROJECTION

THE INFORMATION AND DIMENSIONS SHOWN ON THIS DRAWING ARE THE PROPERTY OF L-COM GLOBAL CONNECTIVITY. ALL RIGHTS RESERVED.

SHEET 1 OF 1

SCALE N/A

| | | | |
|-----------|----------|-----------|----------|
| CAGE CODE | DRAWN BY | ITEM NO. | REV |
| A | 43321 | DFRSIELLO | LCCN3122 |

UNLESS OTHERWISE SPECIFIED LEADING DIMENSIONS ARE INCHES DIMENSIONS IN [] ARE MILLIMETERS

TOLERANCES:

| | | |
|---------------------|--|--|
| X = ±.2 [5.08] | FRACTIONS ± 1/32 | |
| .XX = ±.02 [.51] | ANGLES ± 1° | |
| .XXX = ±.005 [.13] | CABLE LENGTH (L) TOLERANCES: | |
| | L ≤ 12 [305] = ±.1 [25] / -0 | |
| | 12 [305] < L ≤ 60 [1524] = +.2 [51] / -0 | |
| | 60 [1524] < L ≤ 120 [3048] = +.4 [102] / -0 | |
| | 120 [3048] < L ≤ 300 [7620] = +.6 [152] / -0 | |
| | 300 [7620] < L = +.5%L / -0 | |

ALL DIMENSIONS SHOWN ARE FOR REFERENCE ONLY.

T-Rev-D