

12.4 GHz SMA Female Connector Crimp/Solder Attachment for RG55, RG142, RG223



**LCCN3147**

**Configuration**

- SMA Female Connector
- MIL-STD-348A
- 50 Ohms
- Straight Body Geometry
- RG55, RG142, RG223 Interface Type
- Crimp/Solder Attachment

**Description**

The L-com LCCN3147 SMA female connector has a brass body for telecommunications, data communication, general-purpose test, industrial fields, and rack and panel mount applications. This RF connector has a straight body style and beryllium copper contact with gold plating. This threaded standard coaxial connector works on a maximum frequency of 12.4 GHz and provides an excellent maximum VSWR of 1.28.

The 12.4 GHz SMA connector is available in a 0.893-inch length, 0.250-inch width, and 0.250-inch height. The RG55 coax connector allows developers to configure and customize their signal connections however they desire. This SMA connector with crimp/solder attachment has a high-quality construction and an impedance of 50 ohms.

The LCCN3147 RG55 coax RF connector has nickel body plating. This 12.4 GHz brass coaxial connector comes with PTFE insulation. The SMA female connector weighs 0.006 pounds and is most used in USB software-defined radio dongles, handheld radios, mobile phone antennas, Wi-Fi antenna systems, and microwave systems.

L-com has the largest in-stock selection of RF and coaxial connectors with same-day shipping for domestic and international orders. We currently have a variety of antenna, audio/video, Ethernet, fiber optic, and USB connectors in our portfolio that are ready to ship today. For further information on similar products, our expert technical support and knowledgeable sales team can help you get the high-quality RF connector that meets your requirements.

**Electrical Specifications**

Description	Minimum	Typical	Maximum	Units
Frequency Range	DC		12.4	GHz
VSWR			1.28:1	
Operating Voltage (AC)			500	Vrms

**Mechanical Specifications**

**Size**

Length	0.893in	[22.68mm]
Width/Dia.	0.25in	[6.35mm]
Height	0.25in	[6.35mm]
Weight	0.006lbs	[2.72g]

**Material Specifications**

Description	Material	Plating
-------------	----------	---------

Click the following link (or enter part number in "SEARCH" on website) to obtain additional part information including price, inventory and certifications:  
[12.4 GHz SMA Female Connector Crimp/Solder Attachment for RG55, RG142, RG223 LCCN3147](#)

12.4 GHz SMA Female Connector Crimp/Solder Attachment for RG55, RG142, RG223



**LCCN3147**

Contact	Beryllium Copper	Gold 50 µin minimum
Insulation	PTFE	
Body	Brass	Nickel 100 µin minimum

**Environmental Specifications**

**Temperature**

Operating Range -65deg C to +165deg C

**Compliance Certifications** (see [product page](#) for current document)

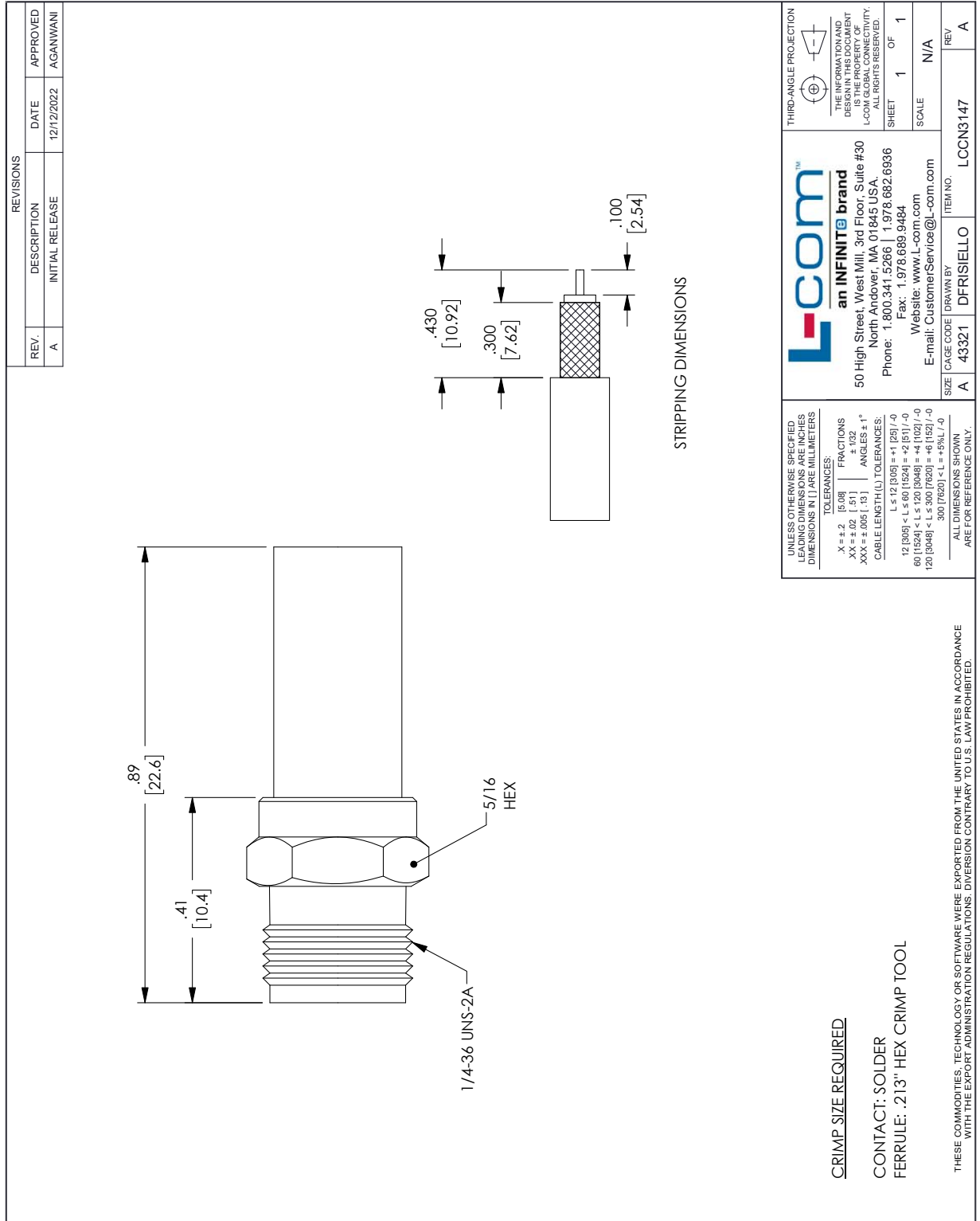
**Plotted and Other Data**

12.4 GHz SMA Female Connector Crimp/Solder Attachment for RG55, RG142, RG223 from L-com has same day shipment for domestic and International orders. Our portfolio includes coaxial cable assemblies, connectors, adapters and custom products as well as lightning and surge protectors, NEMA rated enclosures, and an RF product line which includes antennas, amplifiers, passive, and active components. Click the following link (or enter part number in "SEARCH" on website) to obtain additional part information including price, inventory and certifications: 12.4 GHz SMA Female Connector Crimp/Solder Attachment for RG55, RG142, RG223 LCCN3147

URL: <https://www.l-com.com/12.4-ghz-sma-female-connector-crimp-solder-attachment-rg55-rg142-rg223-lccn3147-p.aspx>

The information contained within this document is accurate to the best of our knowledge and representative of the part described herein. It may be necessary to make modifications to the part and/or the documentation of the part in order to impliment improvements. L-com reserves the right to make such changes as required. Unless otherwise stated, all specifications are nominal. L-com does not make any representation or warranty regarding the suitability of the part described herein for any particular purpose, and L-com does not assume liability arising out of the use of any part or document.

L-com CAD Drawing



REVISIONS			
REV.	DESCRIPTION	DATE	APPROVED
A	INITIAL RELEASE	12/12/2022	AGANWANI

UNLESS OTHERWISE SPECIFIED LEADING DIMENSIONS ARE INCHES DIMENSIONS IN [ ] ARE MILLIMETERS.

TOLERANCES:

.X = ±.2 [5.08] | FRACTIONS ±.132 | ANGLES ±1°

XX = ±.02 [.51] | XXX = ±.005 [0.13]

CABLE LENGTH (L) TOLERANCES:

L ≤ 12 [305] = ±.1 [25] / -0

12 [305] < L ≤ 60 [1524] = ±.2 [51] / -0

60 [1524] < L ≤ 120 [3048] = ±.4 [102] / -0

120 [3048] < L ≤ 300 [7620] = ±.6 [152] / -0

300 [7620] < L = ±.5% L / -0

ALL DIMENSIONS SHOWN ARE FOR REFERENCE ONLY.

THIRD-ANGLE PROJECTION

THE INFORMATION AND DESIGN CONTAINED HEREIN IS THE PROPERTY OF L-COM GLOBAL CONNECTIVITY. ALL RIGHTS RESERVED.

SHEET 1 OF 1

SCALE N/A

an INFINITE brand

50 High Street, West Mill, 3rd Floor, Suite #30  
North Andover, MA 01845, USA

Phone: 1.800.341.5266 | 1.978.682.6936  
Fax: 1.978.689.9484  
Website: www.L-com.com  
E-mail: CustomerService@L-com.com

ITEM NO. LCCN3147

REV A

**CRIMP SIZE REQUIRED**

**CONTACT: SOLDER**

**FERRULE: .213" HEX CRIMP TOOL**

THESE COMMODITIES, TECHNOLOGY OR SOFTWARE WERE EXPORTED FROM THE UNITED STATES IN ACCORDANCE WITH THE EXPORT ADMINISTRATION REGULATIONS. DIVERSION CONTRARY TO U.S. LAW PROHIBITED.

T-Rev:0