

18 GHz SMA Female Bulkhead Mount Connector Solder Attachment  
for .141 Semi-Rigid, LC141TB, LC141TBJ, RG402

**LCCN3180**



**Configuration**

- SMA Female Connector
- 50 Ohms
- Straight Body Geometry
- .141 Semi-rigid, LC141TB, LC141TBJ, .141 Semi-rigid, RG402 Interface Type
- Solder/Solder Attachment
- Bulkhead

**Description**

The L-com LCCN3180 SMA female connector has a brass body for telecommunications, data communication, general-purpose test, industrial fields, and rack and panel mount applications. This RF connector has a straight body style and beryllium copper contact with gold over nickel plating. This threaded standard coaxial connector works on a maximum frequency of 18 GHz and provides an excellent maximum VSWR of 1.35.

The 18 GHz SMA connector is available in a 0.579-inch length, 0.433-inch width, and 0.433-inch height. This straight coaxial connector has bulkhead mount. The .141 semi-rigid coax connector allows developers to configure and customize their signal connections however they desire. This SMA connector with solder/solder attachment has a high-quality construction and an impedance of 50 ohms.

The LCCN3180 .141 semi-rigid coax RF connector with bulkhead mount has gold over nickel body plating. This 18 GHz brass coaxial connector comes with PTFE insulation. The SMA female connector weighs 0.011 pounds and is most used in USB software-defined radio dongles, handheld radios, mobile phone antennas, Wi-Fi antenna systems, and microwave systems.

L-com has the largest in-stock selection of RF and coaxial connectors with same-day shipping for domestic and international orders. We currently have a variety of antenna, audio/video, Ethernet, fiber optic, and USB connectors in our portfolio that are ready to ship today. For further information on similar products, our expert technical support and knowledgeable sales team can help you get the high-quality RF connector that meets your requirements.

**Electrical Specifications**

Description	Minimum	Typical	Maximum	Units
Frequency Range	DC		18	GHz

**Mechanical Specifications**

**Size**

Length	0.579in	[14.71mm]
Width/Dia.	0.433in	[11.00mm]
Height	0.433in	[11mm]
Weight	0.011lbs	[4.99g]

**Material Specifications**

Description	Material	Plating
Contact	Beryllium Copper	Gold over Nickel
Insulation	PTFE	

Click the following link (or enter part number in "SEARCH" on website) to obtain additional part information including price, inventory and certifications:  
[18 GHz SMA Female Bulkhead Mount Connector Solder Attachment for .141 Semi-Rigid, LC141TB, LC141TBJ, RG402 LCCN3180](#)

18 GHz SMA Female Bulkhead Mount Connector Solder Attachment  
for .141 Semi-Rigid, LC141TB, LC141TBJ, RG402

## LCCN3180



Body

Brass

Gold over Nickel

### Environmental Specifications

**Compliance Certifications** (see [product page](#) for current document)

### Plotted and Other Data

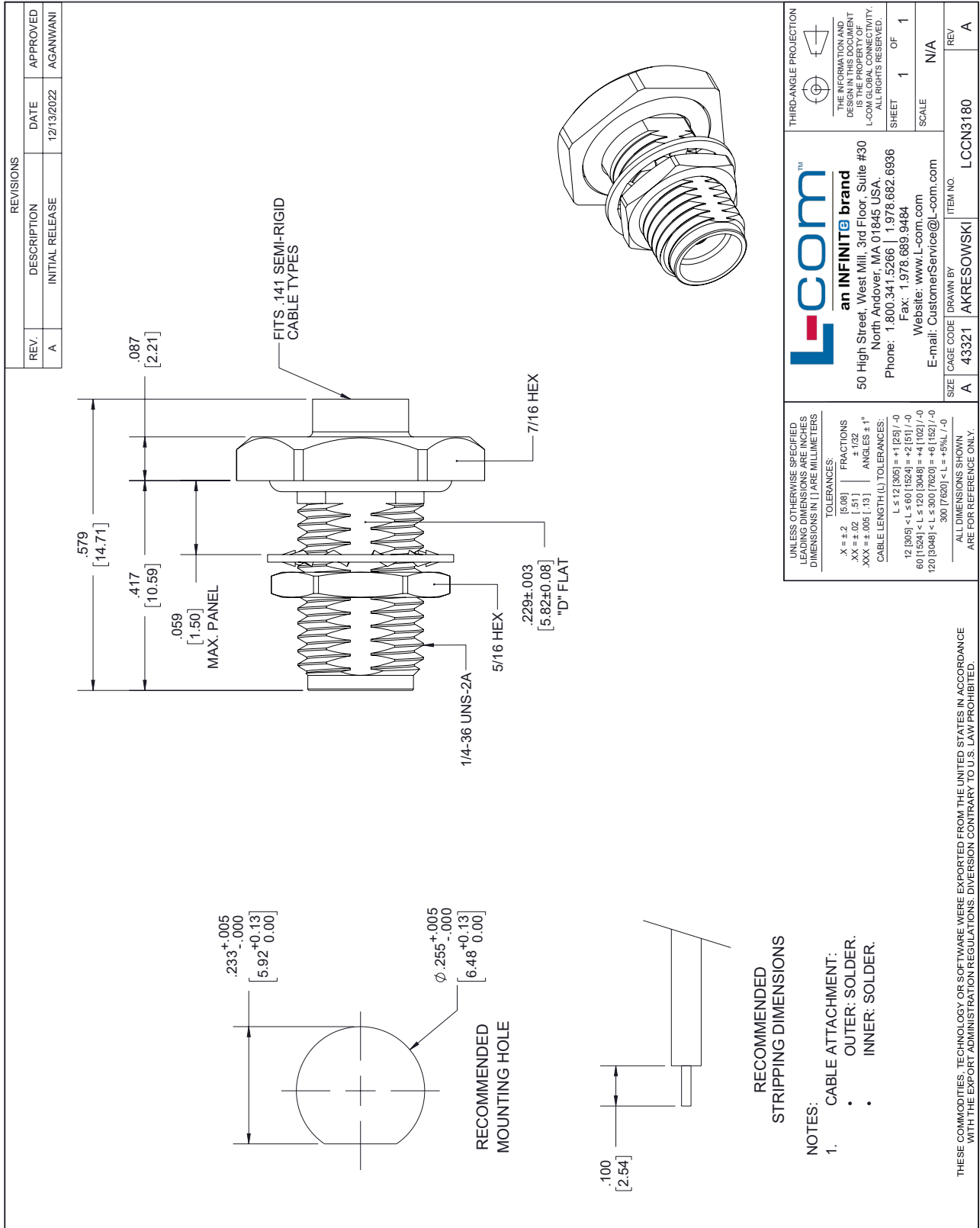
18 GHz SMA Female Bulkhead Mount Connector Solder Attachment for .141 Semi-Rigid, LC141TB, LC141TBJ, RG402 from L-com has same day shipment for domestic and International orders. Our portfolio includes coaxial cable assemblies, connectors, adapters and custom products as well as lightning and surge protectors, NEMA rated enclosures, and an RF product line which includes antennas, amplifiers, passive, and active components. Click the following link (or enter part number in "SEARCH" on website) to obtain additional part information including price, inventory and certifications: 18 GHz SMA Female Bulkhead Mount Connector Solder Attachment for .141 Semi-Rigid, LC141TB, LC141TBJ, RG402 LCCN3180

URL: <https://www.l-com.com/18-ghz-sma-female-bulkhead-mount-connector-solder-attachment-.141-semi-rigid-lc141tb-lc141tbj-rg402-lccn3180-p.aspx>

The information contained within this document is accurate to the best of our knowledge and representative of the part described herein. It may be necessary to make modifications to the part and/or the documentation of the part in order to implement improvements. L-com reserves the right to make such changes as required. Unless otherwise stated, all specifications are nominal. L-com does not make any representation or warranty regarding the suitability of the part described herein for any particular purpose, and L-com does not assume liability arising out of the use of any part or document. The information contained within this document is accurate to the best of our knowledge and representative of the part described herein. It may be necessary to make modifications to the part and/or the documentation of the part in order to implement improvements. L-com reserves the right to make such changes as required. Unless otherwise stated, all specifications are nominal. L-com does not make any representation or warranty regarding the suitability of the part described herein for any particular purpose, and L-com does not assume liability arising out of the use of any part or document.

18 GHz SMA Female Bulkhead Mount Connector Solder Attachment  
for .141 Semi-Rigid, LC141TB, LC141TBJ, RG402

L-com CAD Drawing



UNLESS OTHERWISE SPECIFIED LEADING DIMENSIONS ARE INCHES DIMENSIONS IN [ ] ARE MILLIMETERS

TOLERANCES:  
 .X = ±.2 [5.08] | FRACTIONS ± 1/32  
 .XX = ±.02 [ .51] | ANGLES ± 1°  
 .XXX = ±.005 [ .13] |  
 CABLE LENGTH (L) TOLERANCES:  
 L ≤ 12 (305) = ±1 (25) / -0  
 12 (305) < L ≤ 60 (1524) = ±2 (51) / -0  
 60 (1524) < L ≤ 120 (3048) = ±4 (102) / -0  
 120 (3048) < L ≤ 300 (7620) = ±6 (152) / -0  
 300 (7620) < L = +5% / -0

ALL DIMENSIONS SHOWN ARE FOR REFERENCE ONLY.

**L-com**  
 an INFINITe brand  
 50 High Street, West Mill, 3rd Floor, Suite #30  
 North Andover, MA 01845, USA.  
 Phone: 1.800.341.5266 | 1.978.682.6936  
 Fax: 1.978.689.9484  
 Website: www.L-com.com  
 E-mail: CustomerService@L-com.com

THIRD-ANGLE PROJECTION  
 THE INFORMATION AND DESIGN IN THIS DOCUMENT IS THE PROPERTY OF L-COM GLOBAL CONNECTIVITY. ALL RIGHTS RESERVED.  
 SHEET 1 OF 1  
 SCALE N/A

SIZE	CAGE CODE	DRAWN BY	ITEM NO.
A	43321	AKRESOWSKI	LCCN3180
			REV
			A