

12.4 GHz SMA Male Connector Clamp/Solder Attachment  
for RG58, RG303, LMR-195, 195 Series



**LCCN3194**

**Configuration**

- SMA Male Connector
- MIL-STD-348A
- 50 Ohms
- Straight Body Geometry
- RG58, RG303, LMR-195, 195 series Interface Type
- Clamp/Solder Attachment
- 5/16 Inch Hex

**Description**

The L-com LCCN3194 SMA male connector has a brass body for telecommunications, data communication, general-purpose test, industrial fields, and rack and panel mount applications. This RF connector has a straight body style and brass contact with gold plating. This threaded standard coaxial connector works on a maximum frequency of 12.4 GHz and provides an excellent maximum VSWR of 1.274.

The 12.4 GHz SMA connector is available in a 0.880-inch length, 0.490-inch width, and 0.490-inch height. The RG58 coax connector allows developers to configure and customize their signal connections however they desire. This SMA connector with clamp/solder attachment has a high-quality construction and an impedance of 50 ohms.

The LCCN3194 RG58 coax RF connector has gold body plating. This 12.4 GHz brass coaxial connector comes with PTFE insulation. The SMA male connector weighs 0.016 pounds and is most used in USB software-defined radio dongles, handheld radios, mobile phone antennas, Wi-Fi antenna systems, and microwave systems.

L-com has the largest in-stock selection of RF and coaxial connectors with same-day shipping for domestic and international orders. We currently have a variety of antenna, audio/video, Ethernet, fiber optic, and USB connectors in our portfolio that are ready to ship today. For further information on similar products, our expert technical support and knowledgeable sales team can help you get the high-quality RF connector that meets your requirements.

**Electrical Specifications**

Description	Minimum	Typical	Maximum	Units
Frequency Range	DC		12.4	GHz
VSWR			1.28:1	
Operating Voltage (AC)			500	Vrms

**Mechanical Specifications**

**Size**

Length	0.88in	[22.35mm]
Width/Dia.	0.49in	[12.45mm]
Height	0.49in	[12.45mm]
Weight	0.016lbs	[7.26g]

**Material Specifications**

Description	Material	Plating
-------------	----------	---------

Click the following link (or enter part number in "SEARCH" on website) to obtain additional part information including price, inventory and certifications:  
[12.4 GHz SMA Male Connector Clamp/Solder Attachment for RG58, RG303, LMR-195, 195 Series LCCN3194](#)

12.4 GHz SMA Male Connector Clamp/Solder Attachment  
for RG58, RG303, LMR-195, 195 Series

**LCCN3194**



Contact	Brass	Gold 50μ in. minimum
Insulation	Teflon	
Body	Brass	Gold 3μ in. minimum
Coupling Nut	Brass	Gold 3μ in. minimum

**Mechanical Specification Notes:**

When attaching the connector to the cable use a clamp torque value of 26 to 30 in-lbs [2.94 to 3.39 Nm]

**Environmental Specifications**

**Temperature**

Operating Range

-65deg C to +165deg C

Click the following link (or enter part number in "SEARCH" on website) to obtain additional part information including price, inventory and certifications:  
[12.4 GHz SMA Male Connector Clamp/Solder Attachment for RG58, RG303, LMR-195, 195 Series LCCN3194](#)

12.4 GHz SMA Male Connector Clamp/Solder Attachment  
for RG58, RG303, LMR-195, 195 Series

**LCCN3194**



**Compliance Certifications** (see [product page](#) for current document)

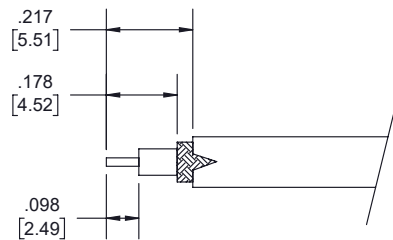
**Plotted and Other Data**

**Assembly Instruction**

Click the following link (or enter part number in "SEARCH" on website) to obtain additional part information including price, inventory and certifications:  
[12.4 GHz SMA Male Connector Clamp/Solder Attachment for RG58, RG303, LMR-195, 195 Series LCCN3194](#)

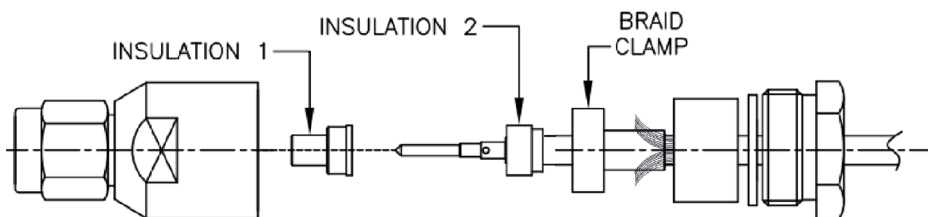
12.4 GHz SMA Male Connector Clamp/Solder Attachment  
for RG58, RG303, LMR-195, 195 Series

**LCCN3194**



**STRIPPING DIMENSIONS**

1. STRIPPING CABLE TO DIMENSIONS SHOWN, DO NOT NICK CENTER CONDUCTOR OR BRAID.
2. SLIDE NUT, WASHER, GASKET OVER THE CABLE.
3. FLARE BRAID (UNTIL FLAT) AND INSTALL BRAID CLAMP AS SHOWN AND SLIDE ' INSULATION 2 '.
4. PUSH CENTER CONDUCTOR FULLY INTO THE CONTACT AND SOLDER, REMOVE ANY EXCESS SOLDER.
5. INSERT ' INSULATION 1 ' INTO THE BODY
6. INSERT THE CONTACT INTO THE BODY UNTIL IT SEATS.
7. WITH BRAID (FLARED FLAT) ASSEMBLE THE BRAID CLAMP, GASKET, WASHER AND NUT, CLAMPING THE BRAID AS SHOWN, THEN TIGHTEN. RECOMMENDED TORQUE 3-6 IN-LBS.



Click the following link (or enter part number in "SEARCH" on website) to obtain additional part information including price, inventory and certifications:  
[12.4 GHz SMA Male Connector Clamp/Solder Attachment for RG58, RG303, LMR-195, 195 Series LCCN3194](#)

12.4 GHz SMA Male Connector Clamp/Solder Attachment  
for RG58, RG303, LMR-195, 195 Series

**LCCN3194**

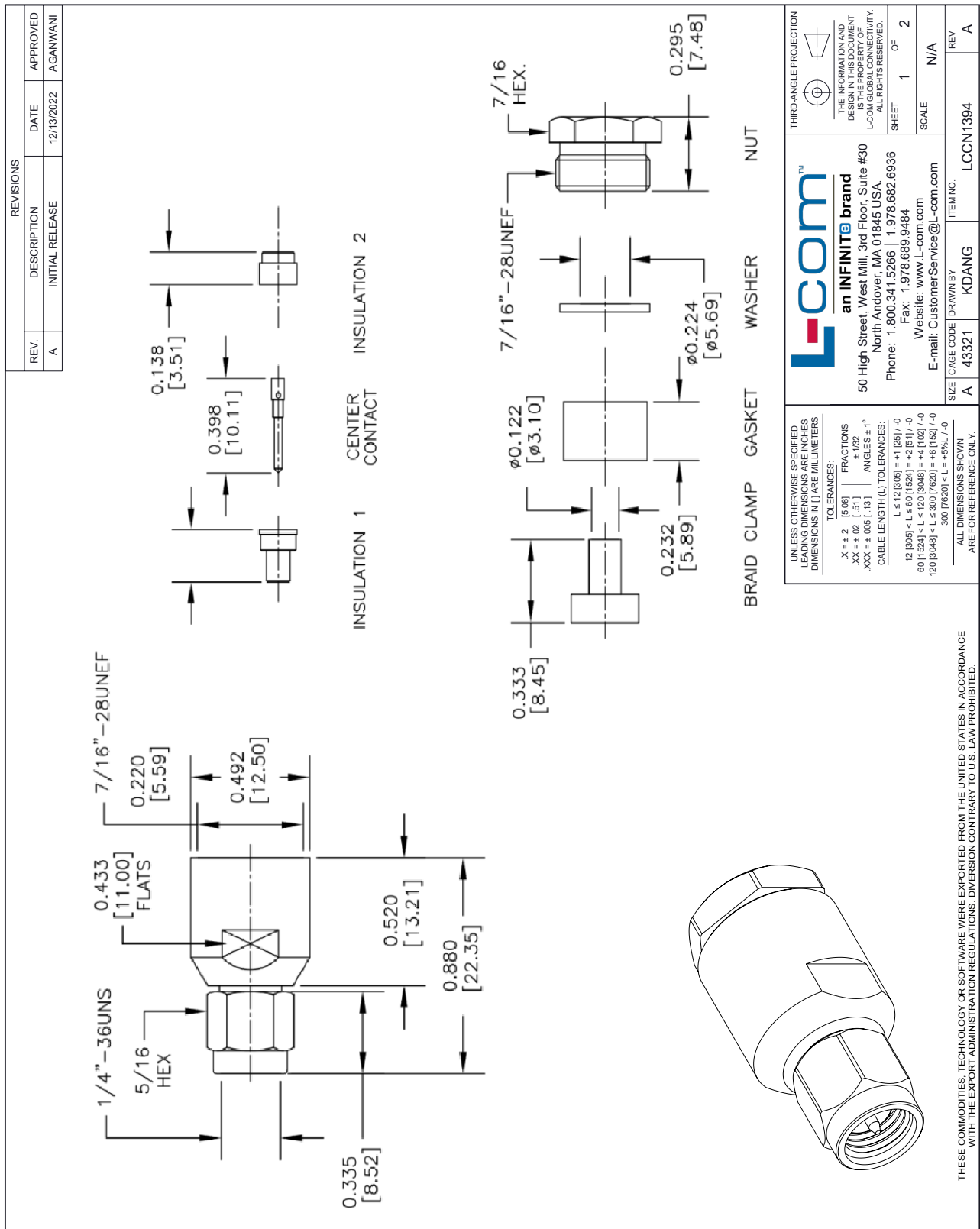


12.4 GHz SMA Male Connector Clamp/Solder Attachment for RG58, RG303, LMR-195, 195 Series from L-com has same day shipment for domestic and International orders. Our portfolio includes coaxial cable assemblies, connectors, adapters and custom products as well as lightning and surge protectors, NEMA rated enclosures, and an RF product line which includes antennas, amplifiers, passive, and active components. Click the following link (or enter part number in "SEARCH" on website) to obtain additional part information including price, inventory and certifications: 12.4 GHz SMA Male Connector Clamp/Solder Attachment for RG58, RG303, LMR-195, 195 Series LCCN3194

URL: <https://www.l-com.com/12.4-ghz-sma-male-connector-clamp-solder-attachment-rg58-rg303-lmr-195-195-series-lccn3194-p.aspx>

The information contained within this document is accurate to the best of our knowledge and representative of the part described herein. It may be necessary to make modifications to the part and/or the documentation of the part in order to implement improvements. L-com reserves the right to make such changes as required. Unless otherwise stated, all specifications are nominal. L-com does not make any representation or warranty regarding the suitability of the part described herein for any particular purpose, and L-com does not assume liability arising out of the use of any part or document. The information contained within this document is accurate to the best of our knowledge and representative of the part described herein. It may be necessary to make modifications to the part and/or the documentation of the part in order to implement improvements. L-com reserves the right to make such changes as required. Unless otherwise stated, all specifications are nominal. L-com does not make any representation or warranty regarding the suitability of the part described herein for any particular purpose, and L-com does not assume liability arising out of the use of any part or document.

L-com CAD Drawing



**L-com**  
an INFINIT<sup>®</sup> brand

50 High Street, West Mill, 3rd Floor, Suite #30  
North Andover, MA 01845, USA  
Phone: 1.800.341.5266 | 1.978.682.6936  
Fax: 1.978.689.9484  
Website: [www.L-com.com](http://www.L-com.com)  
E-mail: [CustomerService@L-com.com](mailto:CustomerService@L-com.com)

THIRD-ANGLE PROJECTION

THE INFORMATION AND DESIGN ARE THE PROPERTY OF L-COM GLOBAL CONNECTIVITY. ALL RIGHTS RESERVED.  
SHEET 1 OF 2

SCALE	N/A
ITEM NO.	LCCN1394
SIZE	A
CAGE CODE	43321
DRAWN BY	KDANG
REV	A

UNLESS OTHERWISE SPECIFIED LEADING DIMENSIONS ARE INCHES DIMENSIONS IN [ ] ARE MILLIMETERS

TOLERANCES:

.X ± .2	[5.08]	FRACTIONS	± 1/32
.XX ± .02	[.51]	ANGLES	± 1°
.XXX ± .005	[.13]	CABLE LENGTH (L)	TOLERANCES:
		L ≤ 12 (305)	± .125 / +0
		12 (305) < L ≤ 60 (1524)	± .25 / +0
		60 (1524) < L ≤ 120 (3048)	± .5 / +0
		120 (3048) < L ≤ 300 (7620)	± 1.0 / +0
		300 (7620) < L ≤ ∞	± 5% / +0

ALL DIMENSIONS SHOWN ARE FOR REFERENCE ONLY.

THESE COMMODITIES, TECHNOLOGY OR SOFTWARE WERE EXPORTED FROM THE UNITED STATES IN ACCORDANCE WITH THE EXPORT ADMINISTRATION REGULATIONS. DIVERSION CONTRARY TO U.S. LAW PROHIBITED.