

18 GHz SMA Female Connector Solder Attachment 4 Hole Flange Mount for .047 Semi-Rigid, .047 Formable, .340 inch Hole Spacing



LCCN3210

Configuration

- SMA Female Connector
- MIL-STD-348
- 50 Ohms
- Straight Body Geometry
- .047 Semi-rigid, .047 Formable Interface Type
- Solder/Solder Attachment
- 4 Hole Flange

Description

The L-com LCCN3210 SMA female connector has a stainless steel body for telecommunications, data communication, general-purpose test, industrial fields, and rack and panel mount applications. This RF connector has a straight body style and beryllium copper contact with gold over nickel plating. This threaded standard coaxial connector works on a maximum frequency of 18 GHz and provides an excellent maximum VSWR of 1.2.

The 18 GHz SMA connector is available in a 0.440-inch length, 0.500-inch width, and 0.500-inch height. This straight coaxial connector has 4 hole flange mount with 0.340 inch hole spacing. The .047 semi-rigid coax connector allows developers to configure and customize their signal connections however they desire. This SMA connector with solder/solder attachment has a high-quality construction and an impedance of 50 ohms.

The LCCN3210 .047 semi-rigid coax RF connector with 4 hole flange mount has gold over nickel body plating. This 18 GHz stainless steel coaxial connector comes with PTFE insulation. The SMA female connector weighs 0.007 pounds and is most used in USB software-defined radio dongles, handheld radios, mobile phone antennas, Wi-Fi antenna systems, and microwave systems.

L-com has the largest in-stock selection of RF and coaxial connectors with same-day shipping for domestic and international orders. We currently have a variety of antenna, audio/video, Ethernet, fiber optic, and USB connectors in our portfolio that are ready to ship today. For further information on similar products, our expert technical support and knowledgeable sales team can help you get the high-quality RF connector that meets your requirements.

Electrical Specifications

Description	Minimum	Typical	Maximum	Units
Frequency Range	DC		18	GHz
VSWR			1.2:1	
Insertion Loss			0.17	dB
Operating Voltage (AC)			500	Vrms
Dielectric Withstanding Voltage (AC)			1,500	Vrms
Corona Discharge			375	Vrms
Insulation Resistance	5,000			MOhms
RF Leakage	-90			dB

Performance by Frequency

Click the following link (or enter part number in "SEARCH" on website) to obtain additional part information including price, inventory and certifications:
[18 GHz SMA Female Connector Solder Attachment 4 Hole Flange Mount for .047 Semi-Rigid, .047 Formable, .340 inch Hole Spacing LCCN3210](#)

18 GHz SMA Female Connector Solder Attachment 4 Hole Flange Mount for .047 Semi-Rigid, .047 Formable, .340 inch Hole Spacing



LCCN3210

Description	F1	F2	F3	F4	F5	Units
Frequency Range	DC to 14	14 to 18				GHz
VSWR, Max	1.13:1	1.2:1				

Mechanical Specifications

Size

Length	0.44in	[11.18mm]
Width/Dia.	0.5in	[12.70mm]
Height	0.5in	[12.7mm]
Weight	0.007lbs	[3.18g]

Material Specifications

Description	Material	Plating
Contact	Beryllium Copper	Gold over Nickel 50 µin minimum
Insulation	PTFE	
Body	Stainless Steel	Gold over Nickel 50 µin minimum

Click the following link (or enter part number in "SEARCH" on website) to obtain additional part information including price, inventory and certifications:
[18 GHz SMA Female Connector Solder Attachment 4 Hole Flange Mount for .047 Semi-Rigid, .047 Formable, .340 inch Hole Spacing LCCN3210](#)

18 GHz SMA Female Connector Solder Attachment 4 Hole Flange Mount for .047 Semi-Rigid, .047 Formable, .340 inch Hole Spacing



LCCN3210

Environmental Specifications

Compliance Certifications (see [product page](#) for current document)

Plotted and Other Data

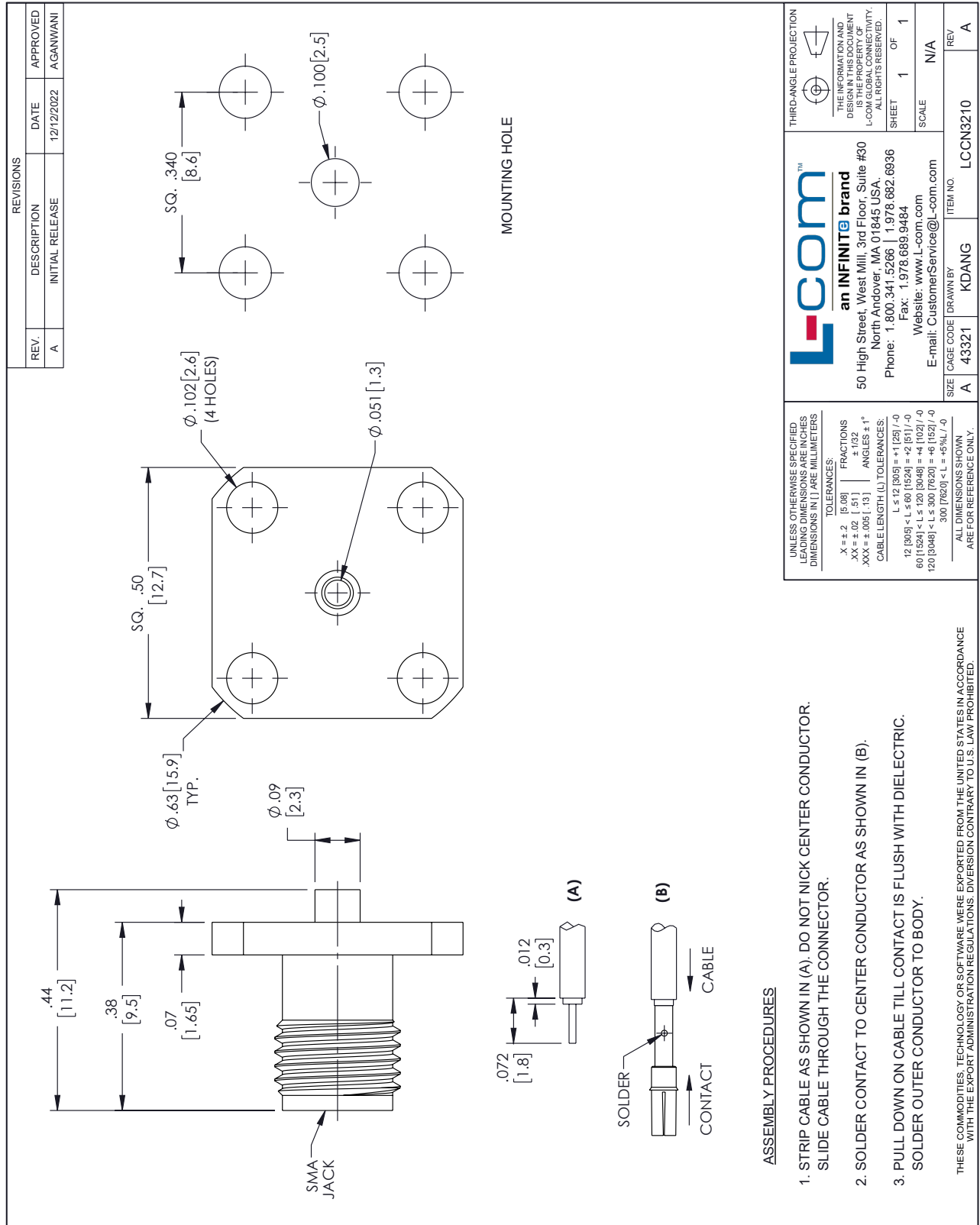
18 GHz SMA Female Connector Solder Attachment 4 Hole Flange Mount for .047 Semi-Rigid, .047 Formable, .340 inch Hole Spacing from L-com has same day shipment for domestic and International orders. Our portfolio includes coaxial cable assemblies, connectors, adapters and custom products as well as lightning and surge protectors, NEMA rated enclosures, and an RF product line which includes antennas, amplifiers, passive, and active components. Click the following link (or enter part number in "SEARCH" on website) to obtain additional part information including price, inventory and certifications: 18 GHz SMA Female Connector Solder Attachment 4 Hole Flange Mount for .047 Semi-Rigid, .047 Formable, .340 inch Hole Spacing LCCN3210

URL: <https://www.l-com.com/18-ghz-sma-female-connector-solder-attachment-4-hole-flange-mount-.047-semi-rigid-.047-formable-.340-inch-hole-spacing-lccn3210-p.aspx>

The information contained within this document is accurate to the best of our knowledge and representative of the part described herein. It may be necessary to make modifications to the part and/or the documentation of the part in order to implement improvements. L-com reserves the right to make such changes as required. Unless otherwise stated, all specifications are nominal. L-com does not make any representation or warranty regarding the suitability of the part described herein for any particular purpose, and L-com does not assume liability arising out of the use of any part or document. The information contained within this document is accurate to the best of our knowledge and representative of the part described herein. It may be necessary to make modifications to the part and/or the documentation of the part in order to implement improvements. L-com reserves the right to make such changes as required. Unless otherwise stated, all specifications are nominal. L-com does not make any representation or warranty regarding the suitability of the part described herein for any particular purpose, and L-com does not assume liability arising out of the use of any part or document.

18 GHz SMA Female Connector Solder Attachment 4 Hole Flange Mount for .047 Semi-Rigid, .047 Formable, .340 inch Hole Spacing

L-com CAD Drawing



ASSEMBLY PROCEDURES

1. STRIP CABLE AS SHOWN IN (A). DO NOT NICK CENTER CONDUCTOR. SLIDE CABLE THROUGH THE CONNECTOR.
2. SOLDER CONTACT TO CENTER CONDUCTOR AS SHOWN IN (B).
3. PULL DOWN ON CABLE TILL CONTACT IS FLUSH WITH DIELECTRIC. SOLDER OUTER CONDUCTOR TO BODY.