

SMA Male Connector Crimp/Solder Attachment for RG8X,
0.240 inch, LMR-240, LMR-240-DB, LMR-240-UF, B7808A



LCCN3243

Configuration

- SMA Male Connector
- 50 Ohms
- Straight Body Geometry
- Connector Interface Types: RG8X, .240 inch, LMR-240, LMR-240-DB, LMR-240-UF, B7808A
- 5/16 inch Hex

Features

- Max. Operating Frequency 12.4 GHz
- Gold Plated Brass Contact

Applications

- General Purpose Test
- Custom Cable Assemblies

Description

L-com's LCCN3243 SMA male connector with crimp/solder attachment for RG8X, 0.240 inch, LMR-240, LMR240-DB, LMR-240-UF and B7808A is part of our full line of RF components available for same-day shipping. Our SMA male connector operates up to a maximum frequency of 12.4 GHz. Our SMA male connector LCCN3243 datasheet specifications and drawing with dimensions are shown below in this PDF. L-com's broad catalog of RF, microwave and millimeter wave connectors allows designers to configure and customize their signal connections however they like. Whether the need is to provide an I/O for a board design, or simply create a custom cable assembly configuration, L-com has the right connector for the job. L-com can also expertly build your custom cable assemblies for you and ship same-day.

Electrical Specifications

Description	Minimum	Typical	Maximum	Units
Frequency Range	DC		12.4	GHz
Operating Voltage (AC)			333	Vrms
Dielectric Withstanding Voltage (AC)			1,000	Vrms
Impedance		50		Ohms

Mechanical Specifications

Size

- Length 0.97 in [24.64 mm]
- Width 0.313 in [7.95 mm]
- Height 0.313 in [7.95 mm]
- Weight 0.02 lbs [9.07 g]
- Mating Cycles 500 Cycles
- Mating Torque 3 to 5 in-lbs [[0.34 to 0.57 Nm]]

Material Specifications

Description	Material	Plating
Contact	Brass	Gold
Insulation	PTFE	
Body	Brass	Gold
Coupling Nut	Brass	Gold

SMA Male Connector Crimp/Solder Attachment for RG8X,
0.240 inch, LMR-240, LMR-240-DB, LMR-240-UF, B7808A



LCCN3243

Environmental Specifications

Temperature

Operating Range

-65 to +165 deg C

Compliance Certifications (see [product page](#) for current document)

Plotted and Other Data

Notes:

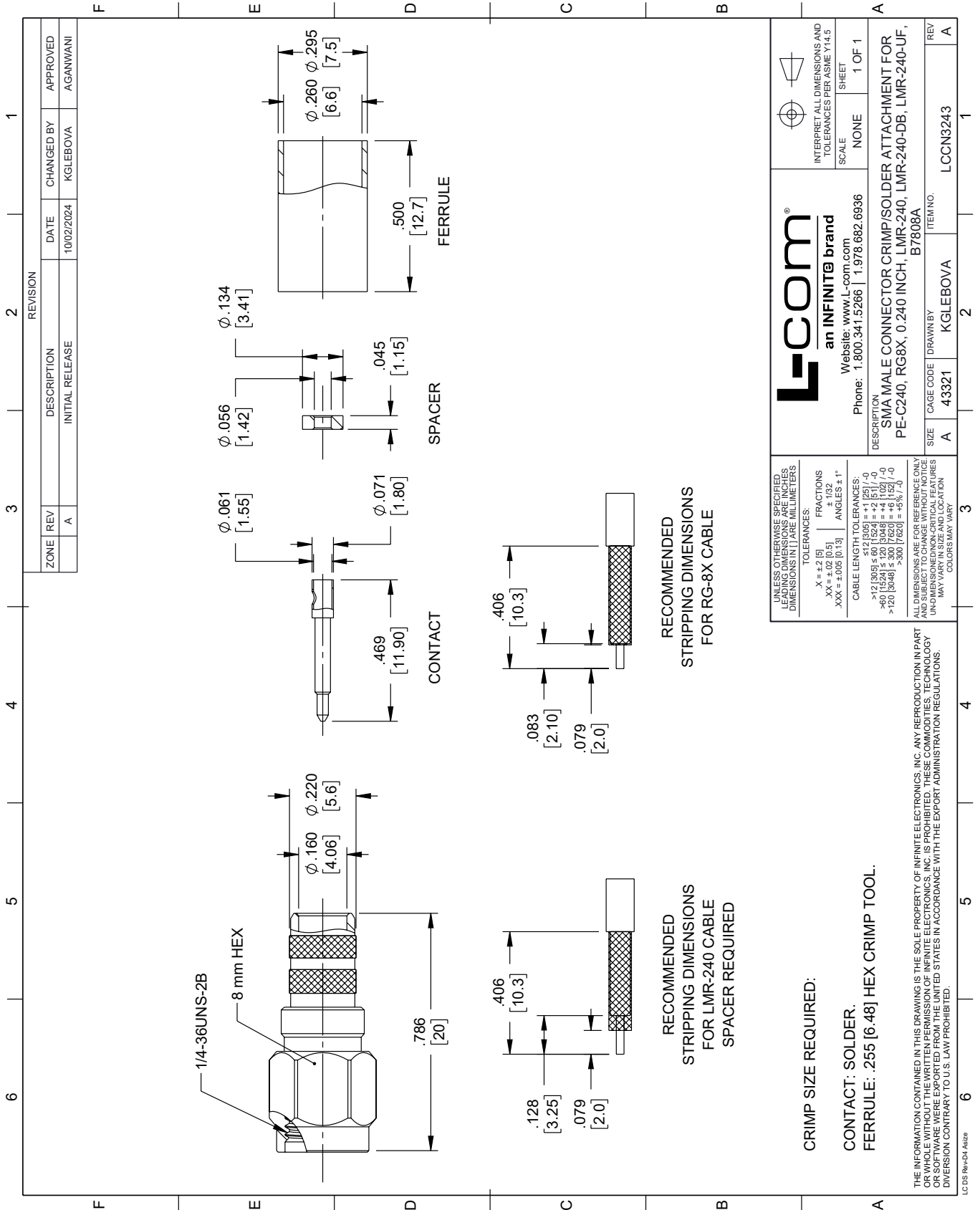
SMA Male Connector Crimp/Solder Attachment for RG8X, 0.240 inch, LMR-240, LMR-240-DB, LMR-240-UF, B7808A from L-com has same day shipment for domestic and International orders. Our portfolio includes coaxial cable assemblies, connectors, adapters and custom products as well as lightning and surge protectors, NEMA rated enclosures, and an RF product line which includes antennas, amplifiers, passive, and active components.

URL: <https://www.l-com.com/sma-male-connector-crimp-solder-attachment-rg8x-0.240-inch-lmr-240-lmr-240-db-lmr-240-uf-b7808a-lccn3243-p.aspx>

The information contained within this document is accurate to the best of our knowledge and representative of the part described herein. It may be necessary to make modifications to the part and/or the documentation of the part in order to implement improvements. L-com reserves the right to make such changes as required. Unless otherwise stated, all specifications are nominal. L-com does not make any representation or warranty regarding the suitability of the part described herein for any particular purpose, and L-com does not assume liability arising out of the use of any part or document.

LCCN3243 CAD Drawing

SMA Male Connector Crimp/Solder Attachment for RG8X, 0.240 inch, LMR-240, LMR-240-DB, LMR-240-UF, B7808A



REVISION		DATE	CHANGED BY	APPROVED	
ZONE	REV	DESCRIPTION	DATE	CHANGED BY	APPROVED
	A	INITIAL RELEASE	10/02/2024	KGLEBOVA	AGANWANI

L-com
an INFINITE brand
Website: www.L-com.com
Phone: 1.800.341.5266 | 1.978.682.6936

INTERPRET ALL DIMENSIONS AND TOLERANCES PER ASME Y14.5
SCALE: NONE
SHEET: 1 OF 1

DESCRIPTION: SMA MALE CONNECTOR CRIMP/SOLDER ATTACHMENT FOR PE-C240, RG8X, 0.240 INCH, LMR-240, LMR-240-DB, LMR-240-UF, B7808A

SIZE: A
CAGE CODE: 43321
DRAWN BY: KGLEBOVA
ITEM NO.: LCCN3243
REV: A

UNLESS OTHERWISE SPECIFIED, LEADING DIMENSIONS ARE IN INCHES. DIMENSIONS IN [] ARE MILLIMETERS.

TOLERANCES:
X = ±.2 [5] FRACTIONS ±.132
XX = ±.02 [0.5] ±.132
XXX = ±.005 [0.13] ANGLES ± 1°

CABLE LENGTH TOLERANCES:
-12 [305] ≤ 60 [1524] = ±.1 [25] / -0
>60 [1524] ≤ 120 [3048] = ±.4 [102] / -0
>120 [3048] ≤ 300 [7620] = ±.8 [20] / -0

ALL DIMENSIONS ARE FOR REFERENCE ONLY. UNDIMENSIONED/NON-CRITICAL FEATURES MAY VARY IN SIZE AND LOCATION. COLORS MAY VARY.

THE INFORMATION CONTAINED IN THIS DRAWING IS THE SOLE PROPERTY OF INFINITE ELECTRONICS, INC. ANY REPRODUCTION IN PART OR WHOLE WITHOUT THE WRITTEN PERMISSION OF INFINITE ELECTRONICS, INC. IS PROHIBITED. THESE COMMODITIES, TECHNOLOGY OR SOFTWARE WERE EXPORTED FROM THE UNITED STATES IN ACCORDANCE WITH THE EXPORT ADMINISTRATION REGULATIONS. DIVERSION CONTRARY TO U.S. LAW PROHIBITED.

LC 05 Rev-D4 Altize