

BNC Female Connector Crimp/Solder Attachment for  
RG174, RG316, RG188, LMR-100, 0.100 inch



## LCCN45940

### Configuration

- BNC Female Connector
- MIL-STD-348A
- 50 Ohms
- Straight Body Geometry
- RG174, RG316, RG188, LMR-100, .100 inch Interface Type
- Crimp/Solder Attachment

### Features

- Max. Operating Frequency 1 GHz
- Good VSWR of 1.5:1
- Gold Plated Brass Contact
- 30 µin minimum contact plating

### Applications

- General Purpose Test
- Custom Cable Assemblies

### Description

L-com's LCCN45940, BNC, Standard, Connector is part of our full line of RF components available for same-day shipping. Our BNC female connector operates up to a maximum frequency of 1 GHz and offers good VSWR of 1.5:1. Our BNC female connector LCCN45840 datasheet specifications and drawing with dimensions are shown below in this PDF. L-com's broad catalog of RF, microwave and millimeter wave connectors allows designers to configure and customize their signal connections however they like. Whether the need is to provide an I/O for a board design, or simply create a custom cable assembly configuration, L-com has the right connector for the job. L-com can also expertly build your custom cable assemblies for you and ship same-day.

### Electrical Specifications

Description	Minimum	Typical	Maximum	Units
Frequency Range	DC		1,000	MHz
VSWR			1.5:1	
Operating Voltage (AC)			500	Vrms

### Mechanical Specifications

#### Size

Length	1.28 in [32.51 mm]
Width	0.45 in [11.51 mm]
Weight	0.02 lbs [9.98 g]

### Material Specifications

Description	Material	Plating
Contact	Brass	Gold 30 µin minimum
Insulation	PTFE	
Body	Brass	Nickel 100 µin minimum

Click the following link (or enter part number in "SEARCH" on website) to obtain additional part information including price, inventory and certifications:  
[BNC Female Connector Crimp/Solder Attachment for RG174, RG316, RG188, LMR-100, 0.100 inch LCCN45940](#)

BNC Female Connector Crimp/Solder Attachment for  
RG174, RG316, RG188, LMR-100, 0.100 inch



## LCCN45940

Crimp Sleeve

Brass

Nickel

### Environmental Specifications

#### Temperature

Operating Range

-65deg C to +165deg C

**Compliance Certifications** (see [product page](#) for current document)

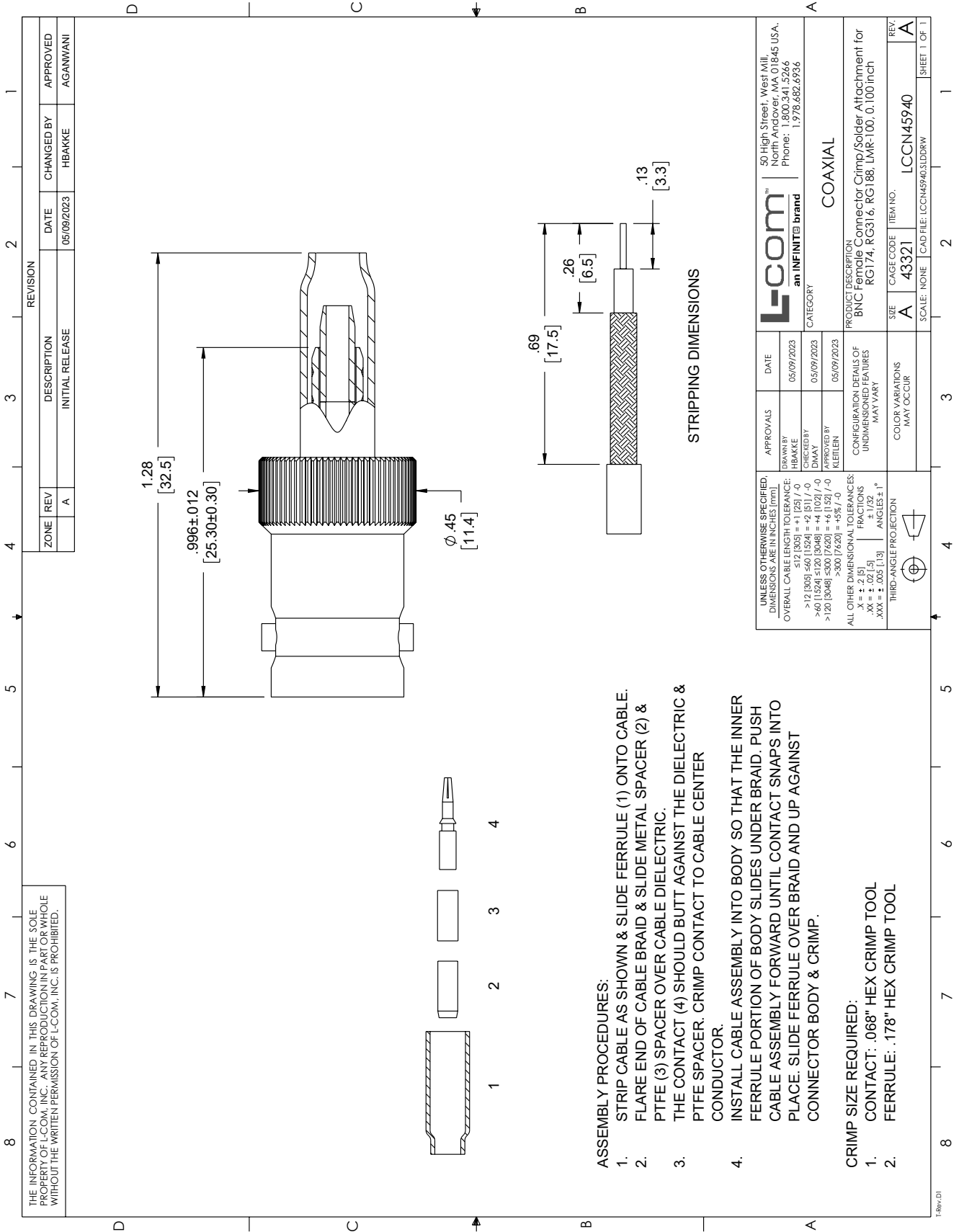
### Plotted and Other Data

BNC Female Connector Crimp/Solder Attachment for RG174, RG316, RG188, LMR-100, 0.100 inch from L-com has same day shipment for domestic and International orders. Our portfolio includes coaxial cable assemblies, connectors, adapters and custom products as well as lightning and surge protectors, NEMA rated enclosures, and an RF product line which includes antennas, amplifiers, passive, and active components. Click the following link (or enter part number in "SEARCH" on website) to obtain additional part information including price, inventory and certifications: BNC Female Connector Crimp/Solder Attachment for RG174, RG316, RG188, LMR-100, 0.100 inch LCCN45940

URL: <https://www.l-com.com/bnc-female-connector-crimp-solder-attachment-rg174-rg316-rg188-lmr-100-0.100-inch-lccn45940-p.aspx>

The information contained within this document is accurate to the best of our knowledge and representative of the part described herein. It may be necessary to make modifications to the part and/or the documentation of the part in order to implement improvements. L-com reserves the right to make such changes as required. Unless otherwise stated, all specifications are nominal. L-com does not make any representation or warranty regarding the suitability of the part described herein for any particular purpose, and L-com does not assume liability arising out of the use of any part or document. The information contained within this document is accurate to the best of our knowledge and representative of the part described herein. It may be necessary to make modifications to the part and/or the documentation of the part in order to implement improvements. L-com reserves the right to make such changes as required. Unless otherwise stated, all specifications are nominal. L-com does not make any representation or warranty regarding the suitability of the part described herein for any particular purpose, and L-com does not assume liability arising out of the use of any part or document.

L-com CAD Drawing



THE INFORMATION CONTAINED IN THIS DRAWING IS THE SOLE PROPERTY OF L-COM, INC.. ANY REPRODUCTION IN PART OR WHOLE WITHOUT THE WRITTEN PERMISSION OF L-COM, INC. IS PROHIBITED.

- ASSEMBLY PROCEDURES:**
1. STRIP CABLE AS SHOWN & SLIDE FERRULE (1) ONTO CABLE.
  2. FLARE END OF CABLE BRAID & SLIDE METAL SPACER (2) & PTFE (3) SPACER OVER CABLE DIELECTRIC.
  3. THE CONTACT (4) SHOULD BUTT AGAINST THE DIELECTRIC & PTFE SPACER. CRIMP CONTACT TO CABLE CENTER CONDUCTOR.
  4. INSTALL CABLE ASSEMBLY INTO BODY SO THAT THE INNER FERRULE PORTION OF BODY SLIDES UNDER BRAID. PUSH CABLE ASSEMBLY FORWARD UNTIL CONTACT SNAPS INTO PLACE. SLIDE FERRULE OVER BRAID AND UP AGAINST CONNECTOR BODY & CRIMP.
- CRIMP SIZE REQUIRED:**
1. CONTACT: .068" HEX CRIMP TOOL
  2. FERRULE: .178" HEX CRIMP TOOL