

Diplexer, 20 to 862 MHz Low Pass, 950 to 2300 MHz
High Pass, 75 Ohm Type F Female



LCDP1002

RF Diplexers Technical Data Sheet

Description

LCDP1002 is a RF diplexer with F-type connectors used to split RF signals with different frequencies. The operating frequency range for this diplexer is from 20 to 2300 MHz. The high pass band is from 950 to 2300 MHz and low pass band is from 20 to 862 MHz. This RF diplexer has great insertion loss of 1 dB and minimum return loss of 10 dB with 75ohm impedance.

LCDP1002 is part of a broad RF product portfolio from Pasternack which can be shipped the same day with no MOQ.

Electrical Specifications

Description	Minimum	Typical	Maximum	Units
Impedance		75		Ohms
Common Port				
Frequency	20		2,300	MHz
LPF Port				
Passband Frequency	20		862	MHz
Return Loss	10	12		dB
Insertion Loss		1	2.6	dB
Rejection Frequency	950		2,300	MHz
Rejection	20	50		dB
DC Block			50	V
HPF Port				
Passband Frequency	950		2,300	MHz
Return Loss	10	12		dB
Insertion Loss		1	2.6	dB
Rejection Frequency	20		862	MHz
Rejection	20	40		dB
DC Passing			16.6	ma/V

Electrical Specification Notes:
Values at 25°C, sea level.

Mechanical Specifications

Size

Length	2.106 in [53.49 mm]
Width	1.791 in [45.49 mm]
Height	0.709 in [18.01 mm]
Weight	0.103 lbs [46.72 g]
Body Material	Zinc
Body Plating	Zinc
Finish	Polished

Configuration

Design	Bidirectional
Package Style	Connectorized
Connector 1	F Female

Click the following link (or enter part number in "SEARCH" on website) to obtain additional part information including price, inventory and certifications:
[Diplexer, 20 to 862 MHz Low Pass, 950 to 2300 MHz High Pass, 75 Ohm Type F Female LCDP1002](#)

Diplexer, 20 to 862 MHz Low Pass, 950 to 2300 MHz High Pass, 75 Ohm Type F Female



LCDP1002

Connector 2	F Female
Connector 3	F Female

Environmental Specifications

Compliance Certifications (see [product page](#) for current document)

Plotted and Other Data

Notes:

- Values at 25°C, sea level.

Our portfolio includes coaxial cable assemblies, connectors, adapters and custom products as well as lightning and surge protectors, NEMA rated enclosures, and an RF product line which includes antennas, amplifiers, passive, and active components.

The information contained in this document is accurate to the best of our knowledge and representative of the part described herein. It may be necessary to make modifications to the part and/or the documentation of the part, in order to implement improvements. L-com reserves the right to make such changes as required. Unless otherwise stated, all specifications are nominal. L-com does not make any representation or warranty regarding the suitability of the part described herein for any particular purpose, and L-com does not assume any liability arising out of the use of any part or documentation.

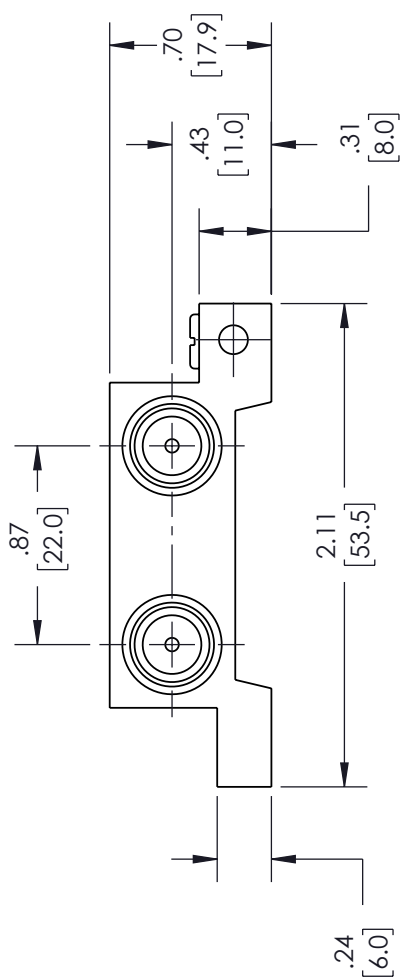
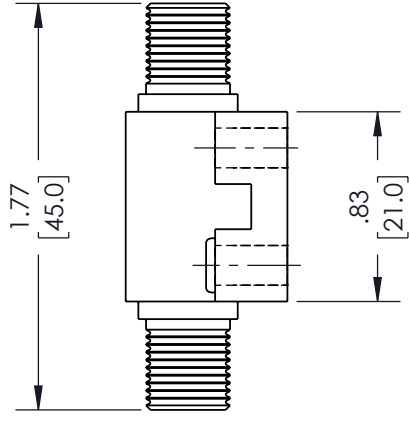
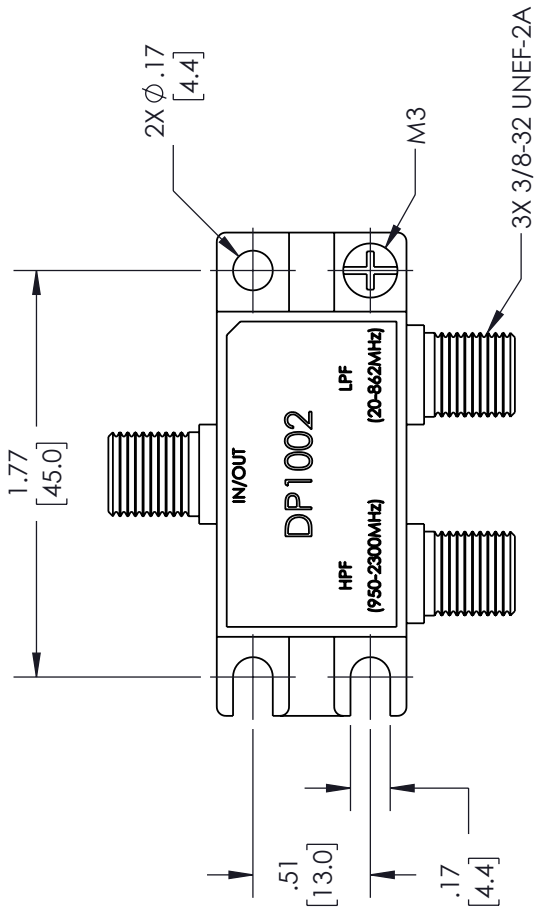
Click the following link (or enter part number in "SEARCH" on website) to obtain additional part information including price, inventory and certifications: [Diplexer, 20 to 862 MHz Low Pass, 950 to 2300 MHz High Pass, 75 Ohm Type F Female LCDP1002](#)

URL: <https://www.l-com.com/diplexer-75-ohm-type-f-female-low-pass-high-pass-lcdp1002-p.aspx>

LCDP1002 CAD Drawing

Diplexer, 20 to 862 MHz Low Pass, 950 to 2300 MHz High Pass, 75 Ohm Type F Female

REVISIONS			
REV.	DESCRIPTION	DATE	APPROVED
A	INITIAL RELEASE	11/03/22	SPONG



UNLESS OTHERWISE SPECIFIED
LEADING DIMENSIONS ARE INCHES
DIMENSIONS IN [] ARE MILLIMETERS

TOLERANCES:
X = ±.2 [5.08] FRACTIONS
XX = ±.02 [51] +.132
XXX = ±.005 [.13] ANGLES ± 1°

CABLE LENGTH (L) TOLERANCES:
L ≤ 12 [305] = +1 [25] / -0
12 [305] < L ≤ 60 [1524] = +2 [51] / -0
60 [1524] < L ≤ 120 [3048] = +4 [102] / -0
120 [3048] < L ≤ 300 [7620] = +8 [152] / -0
300 [7620] < L = +5% L / -0

ALL DIMENSIONS SHOWN
ARE FOR REFERENCE ONLY.

THIRD-ANGLE PROJECTION

THE INFORMATION AND
DESIGN IN THIS DOCUMENT
IS THE PROPERTY OF
L-COM GLOBAL CONNECTIVITY.
ALL RIGHTS RESERVED.

SHEET 1 OF 1

SCALE N/A

an INFINIT@ brand

50 High Street, West Mill, 3rd Floor, Suite #30
North Andover, MA 01845 USA
Phone: 1.800.341.5266 | 1.978.682.6936
Fax: 1.978.689.9484
Website: www.L-com.com
E-mail: CustomerService@L-com.com

SIZE	CAGE CODE	DRAWN BY	ITEM NO.
A	43321	VTHANGARAJ	LCDP1002
REV	A		

THESE COMMODITIES, TECHNOLOGY OR SOFTWARE WERE EXPORTED FROM THE UNITED STATES IN ACCORDANCE WITH THE EXPORT ADMINISTRATION REGULATIONS. DIVERSION CONTRARY TO U.S. LAW PROHIBITED.

T#Rev D