

Diplexer, 5 to 1450 MHz Low Pass, 1550 to 2300 MHz High Pass, 75 Ohm Type F Female



## LCDP1003

### RF Diplexers Technical Data Sheet

#### Description

LCDP1003 is a RF diplexer with F-type connectors used to split RF signals with different frequencies. The operating frequency range for this diplexer is from 5 to 2300 MHz. The high pass band is from 1550 to 2300 MHz and low pass band is from 5 to 1450 MHz. This RF diplexer has great insertion loss of 1.5 dB and minimum return loss of 10 dB with 75ohm impedance.

LCDP1003 is part of a broad RF product portfolio from Pasternack which can be shipped the same day with no MOQ.

#### Electrical Specifications

Description	Minimum	Typical	Maximum	Units
Impedance		75		Ohms
<b>Common Port</b>				
Frequency	5		2,300	MHz
<b>LPF Port</b>				
Passband Frequency	5		1,450	MHz
Return Loss	10	12		dB
Insertion Loss		1.5	2.5	dB
Rejection Frequency	1.55		2,300	GHz
Rejection	25	30		dB
<b>HPF Port</b>				
Passband Frequency	1.55		2,300	GHz
Return Loss	10	12		dB
Insertion Loss		1.5	2.5	dB
Rejection Frequency	5		1,450	MHz
Rejection	25	30		dB

Electrical Specification Notes:  
Values at 25°C, sea level.

#### Mechanical Specifications

##### Size

Length	2.933 in [74.5 mm]
Width	1.299 in [32.99 mm]
Height	0.705 in [17.91 mm]
Weight	0.132 lbs [59.87 g]
Body Material	Zinc
Body Plating	Zinc
Finish	Polished

##### Configuration

Design	Bidirectional
Package Style	Connectorized
Connector 1	F Female
Connector 2	F Female
Connector 3	F Female

Click the following link (or enter part number in "SEARCH" on website) to obtain additional part information including price, inventory and certifications:  
[Diplexer, 5 to 1450 MHz Low Pass, 1550 to 2300 MHz High Pass, 75 Ohm Type F Female LCDP1003](#)

Diplexer, 5 to 1450 MHz Low Pass, 1550 to 2300 MHz High Pass, 75 Ohm Type F Female



## LCDP1003

---

### Environmental Specifications

**Compliance Certifications** (see [product page](#) for current document)

### Plotted and Other Data

Notes:

- Values at 25°C, sea level.

Our portfolio includes coaxial cable assemblies, connectors, adapters and custom products as well as lightning and surge protectors, NEMA rated enclosures, and an RF product line which includes antennas, amplifiers, passive, and active components.

The information contained in this document is accurate to the best of our knowledge and representative of the part described herein. It may be necessary to make modifications to the part and/or the documentation of the part, in order to implement improvements. L-com reserves the right to make such changes as required. Unless otherwise stated, all specifications are nominal. L-com does not make any representation or warranty regarding the suitability of the part described herein for any particular purpose, and L-com does not assume any liability arising out of the use of any part or documentation.

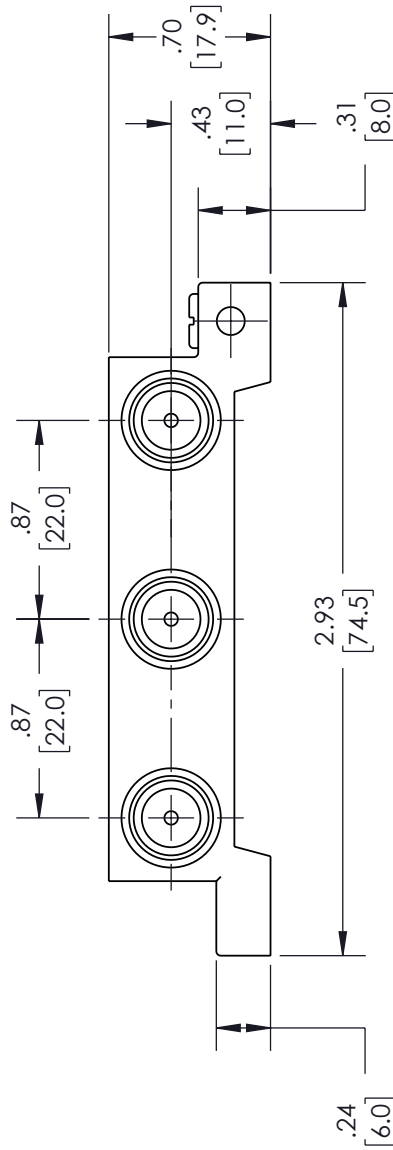
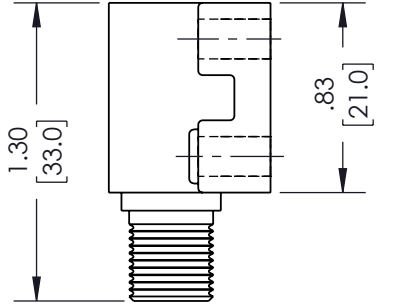
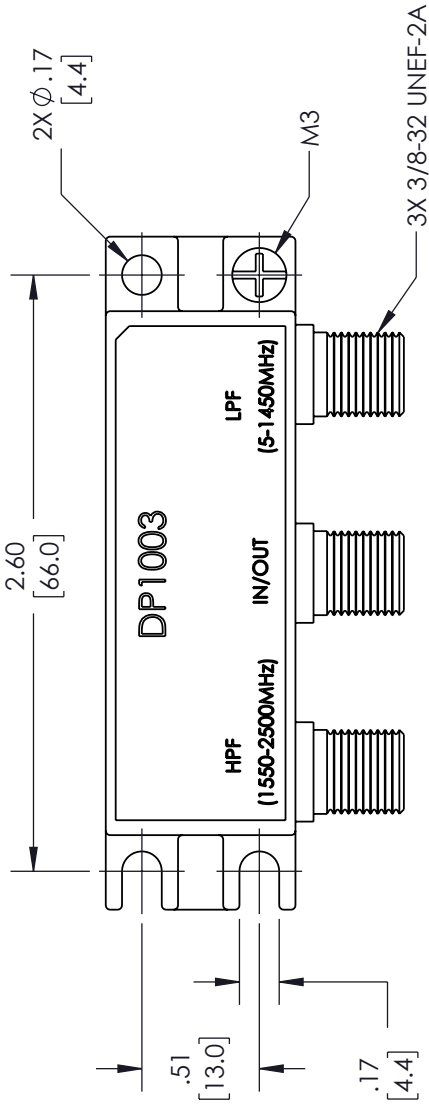
Click the following link (or enter part number in "SEARCH" on website) to obtain additional part information including price, inventory and certifications: [Diplexer, 5 to 1450 MHz Low Pass, 1550 to 2300 MHz High Pass, 75 Ohm Type F Female LCDP1003](#)

URL: <https://www.l-com.com/diplexer-75-ohm-type-f-female-low-pass-high-pass-lcdp1003-p.aspx>

# LCDP1003 CAD Drawing

Diplexer, 5 to 1450 MHz Low Pass, 1550 to 2300 MHz High Pass, 75 Ohm Type F Female

REVISIONS			
REV.	DESCRIPTION	DATE	APPROVED
A	INITIAL RELEASE	11/03/22	SPONG



<p>UNLESS OTHERWISE SPECIFIED LEADING DIMENSIONS ARE INCHES DIMENSIONS IN [ ] ARE MILLIMETERS</p> <p>TOLERANCES:</p> <p>X = ±.2 [5.08] FRACTIONS                  XX = ±.02 [51] +.132                  XXX = ±.005 [.13] ANGLES ± 1°</p> <p>CABLE LENGTH (L) TOLERANCES:                  L ≤ 12 [305] = +1 [25] / -0                  12 [305] &lt; L ≤ 60 [1524] = +2 [51] / -0                  60 [1524] &lt; L ≤ 120 [3048] = +4 [102] / -0                  120 [3048] &lt; L ≤ 300 [7620] = +6 [152] / -0                  300 [7620] &lt; L = +6% L / -0</p> <p>ALL DIMENSIONS SHOWN ARE FOR REFERENCE ONLY.</p>	<p>THIRD-ANGLE PROJECTION</p> <p>THE INFORMATION AND DESIGN IN THIS DOCUMENT IS THE PROPERTY OF L-COM GLOBAL CONNECTIVITY. ALL RIGHTS IS RESERVED.</p> <p>SHEET 1 OF 1</p>
	<p>SCALE N/A</p>
<p>an INFINIT<sup>®</sup> brand</p> <p>50 High Street, West Mill, 3rd Floor, Suite #30                  North Andover, MA 01845 USA                  Phone: 1.800.341.5266   1.978.682.6936                  Fax: 1.978.689.9484                  Website: www.L-com.com                  E-mail: CustomerService@L-com.com</p>	<p>ITEM NO. LCDP1003</p>
<p>SIZE A</p> <p>CAGE CODE 43321</p> <p>DRAWN BY VTHANGARAJ</p>	<p>REV A</p>

THESE COMMODITIES, TECHNOLOGY OR SOFTWARE WERE EXPORTED FROM THE UNITED STATES IN ACCORDANCE WITH THE EXPORT ADMINISTRATION REGULATIONS. DIVERSION CONTRARY TO U.S. LAW PROHIBITED.

T:Rev D