

Diplexer, 5 to 68 MHz and 125 to 1000 MHz TV Band,
87 to 108 MHz FM Band, 75 Ohm Type F Female



LCDP1005

RF Diplexers Technical Data Sheet

Description

LCDP1005 is a RF diplexer with F-type connectors used to split RF signals with different frequencies. The operating frequency range for this diplexer is from 5 to 1000 MHz. The TV band is from 5 to 68 MHz and 125 to 1000 MHz and FM band is from 87 to 108 MHz. This RF diplexer has great insertion loss of 2 dB and minimum return loss of 10 dB with 75ohm impedance.

LCDP1005 is part of a broad RF product portfolio from Pasternack which can be shipped the same day with no MOQ.

Electrical Specifications

Description	Minimum	Typical	Maximum	Units
Impedance		75		Ohms
Common Port				
Frequency	5		1,000	MHz
DC Block			50	V
FM Port				
Passband Frequency	87		108	MHz
Return Loss	10	12		dB
Insertion Loss		2	3	dB
Rejection Frequency	5		68	MHz
Rejection	20	22		dB
Rejection Frequency 2	125		200	MHz
Rejection 2	18	22		dB
Rejection Frequency 3	201		1,000	MHz
Rejection 3	45	50		dB
DC Block			50	V
TV Port				
Passband Frequency	5		68	MHz
Return Loss	10	12		dB
Insertion Loss		0.5	1	dB
Rejection Frequency	87		108	MHz
Rejection	15	20		dB
Passband Frequency 2	125		1,000	MHz
Return Loss 2	10	12		dB
Insertion Loss 2		0.5	1	dB
DC Block			50	V

Electrical Specification Notes:
Values at 25°C, sea level.

Mechanical Specifications

Size

Length

2.933 in [74.5 mm]

Width

1.299 in [32.99 mm]

Height

0.705 in [17.91 mm]

Click the following link (or enter part number in "SEARCH" on website) to obtain additional part information including price, inventory and certifications:
[Diplexer, 5 to 68 MHz and 125 to 1000 MHz TV Band, 87 to 108 MHz FM Band, 75 Ohm Type F Female LCDP1005](#)

Diplexer, 5 to 68 MHz and 125 to 1000 MHz TV Band, 87 to 108 MHz FM Band, 75 Ohm Type F Female



LCDP1005

Weight	0.132 lbs [59.87 g]
Body Material	Zinc
Body Plating	Zinc
Finish	Polished

Configuration

Design	Bidirectional
Package Style	Connectorized
Connector 1	F Female
Connector 2	F Female
Connector 3	F Female

Environmental Specifications

Compliance Certifications (see [product page](#) for current document)

Plotted and Other Data

Notes:

- Values at 25°C, sea level.

Our portfolio includes coaxial cable assemblies, connectors, adapters and custom products as well as lightning and surge protectors, NEMA rated enclosures, and an RF product line which includes antennas, amplifiers, passive, and active components.

The information contained in this document is accurate to the best of our knowledge and representative of the part described herein. It may be necessary to make modifications to the part and/or the documentation of the part, in order to implement improvements. L-com reserves the right to make such changes as required. Unless otherwise stated, all specifications are nominal. L-com does not make any representation or warranty regarding the suitability of the part described herein for any particular purpose, and L-com does not assume any liability arising out of the use of any part or documentation.

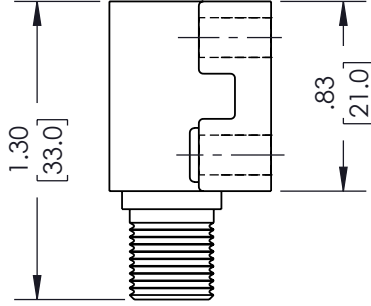
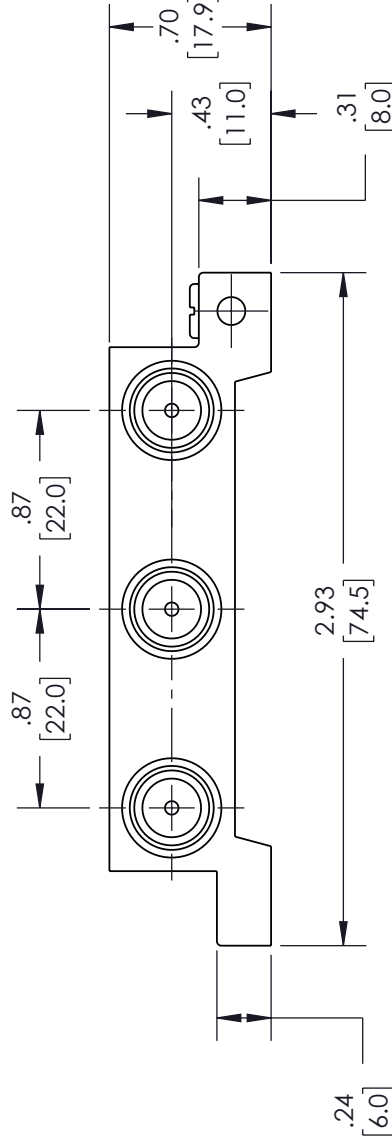
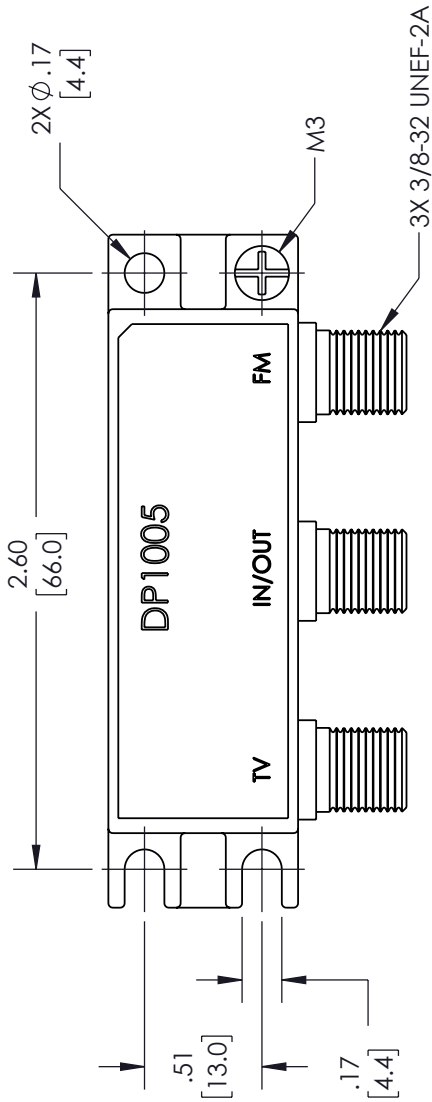
Click the following link (or enter part number in "SEARCH" on website) to obtain additional part information including price, inventory and certifications: [Diplexer, 5 to 68 MHz and 125 to 1000 MHz TV Band, 87 to 108 MHz FM Band, 75 Ohm Type F Female LCDP1005](#)

URL: <https://www.l-com.com/diplexer-75-ohm-type-f-female-fm-band-tv-band-lcdp1005-p.aspx>

LCDP1005 CAD Drawing

Diplexer, 5 to 68 MHz and 125 to 1000 MHz TV Band, 87 to 108 MHz FM Band, 75 Ohm Type F Female

REVISIONS			
REV.	DESCRIPTION	DATE	APPROVED
A	INITIAL RELEASE	11/03/22	SPONG



UNLESS OTHERWISE SPECIFIED
LEADING DIMENSIONS ARE INCHES
DIMENSIONS IN [] ARE MILLIMETERS

TOLERANCES:
X = ±.2 [5.08] | FRACTIONS
XX = ±.02 [51] | +.132
XXX = ±.005 [13] | ANGLES ± 1°

CABLE LENGTH (L) TOLERANCES:
L ≤ 12 [305] = +1 [25] / -0
12 [305] < L ≤ 60 [1524] = +2 [51] / -0
60 [1524] < L ≤ 120 [3048] = +4 [102] / -0
120 [3048] < L ≤ 300 [7620] = +6 [152] / -0
300 [7620] < L = +5%L / -0

ALL DIMENSIONS SHOWN
ARE FOR REFERENCE ONLY.

L-com
an INFINITe brand

50 High Street, West Mill, 3rd Floor, Suite #30
North Andover, MA 01845 USA
Phone: 1.800.341.5266 | 1.978.682.6936
Fax: 1.978.689.9484
Website: www.L-com.com
E-mail: CustomerService@L-com.com

THIRD-ANGLE PROJECTION

THE INFORMATION AND DESIGN IN THIS DOCUMENT IS THE PROPERTY OF L-COM GLOBAL CONNECTIVITY. ALL RIGHTS RESERVED.

SHEET 1 OF 1

SCALE N/A

REV A

ITEM NO. LCDP1005

DRAWN BY VTHANGARAJ

CAGE CODE A 43321

THESE COMMODITIES, TECHNOLOGY OR SOFTWARE WERE EXPORTED FROM THE UNITED STATES IN ACCORDANCE WITH THE EXPORT ADMINISTRATION REGULATIONS. DIVERSION CONTRARY TO U.S. LAW PROHIBITED.

T:Rev D