

Diplexer, 5 to 204 MHz Low Pass, 258 to 1800 MHz
High Pass, 75 Ohm Type F Female



LCDP1007

RF Diplexers Technical Data Sheet

Description

LCDP1007 is a RF diplexer with F-type connectors used to split RF signals with different frequencies. The operating frequency range for this diplexer is from 5 to 1800 MHz. The high pass band is from 258 to 1800 MHz and low pass band is from 5 to 204 MHz. This RF diplexer has great insertion loss of 1 dB and minimum return loss of 13 dB with 75ohm impedance.

LCDP1007 is part of a broad RF product portfolio from Pasternack which can be shipped the same day with no MOQ.

Electrical Specifications

Description	Minimum	Typical	Maximum	Units
Impedance		75		Ohms
Common Port				
Frequency	5		1,800	MHz
LPF Port				
Passband Frequency	5		204	MHz
Return Loss	14	18		dB
Insertion Loss		0.8	1.5	dB
Rejection Frequency	258		1,800	MHz
Rejection	50	60		dB
HPF Port				
Passband Frequency	258		1,800	MHz
Return Loss	12	16		dB
Insertion Loss		1	1.8	dB
Rejection Frequency	5		204	MHz
Rejection	50	60		dB

Electrical Specification Notes:
Values at 25°C, sea level.

Mechanical Specifications

Size

Length	2.933 in [74.5 mm]
Width	1.299 in [32.99 mm]
Height	0.705 in [17.91 mm]
Weight	0.132 lbs [59.87 g]
Body Material	Zinc
Body Plating	Zinc
Finish	Polished

Configuration

Design	Bidirectional
Package Style	Connectorized
Connector 1	F Female
Connector 2	F Female
Connector 3	F Female

Click the following link (or enter part number in "SEARCH" on website) to obtain additional part information including price, inventory and certifications:
[Diplexer, 5 to 204 MHz Low Pass, 258 to 1800 MHz High Pass, 75 Ohm Type F Female LCDP1007](#)

Diplexer, 5 to 204 MHz Low Pass, 258 to 1800 MHz High Pass, 75 Ohm Type F Female



LCDP1007

Environmental Specifications

Compliance Certifications (see [product page](#) for current document)

Plotted and Other Data

Notes:

- Values at 25°C, sea level.

Our portfolio includes coaxial cable assemblies, connectors, adapters and custom products as well as lightning and surge protectors, NEMA rated enclosures, and an RF product line which includes antennas, amplifiers, passive, and active components.

The information contained in this document is accurate to the best of our knowledge and representative of the part described herein. It may be necessary to make modifications to the part and/or the documentation of the part, in order to implement improvements. L-com reserves the right to make such changes as required. Unless otherwise stated, all specifications are nominal. L-com does not make any representation or warranty regarding the suitability of the part described herein for any particular purpose, and L-com does not assume any liability arising out of the use of any part or documentation.

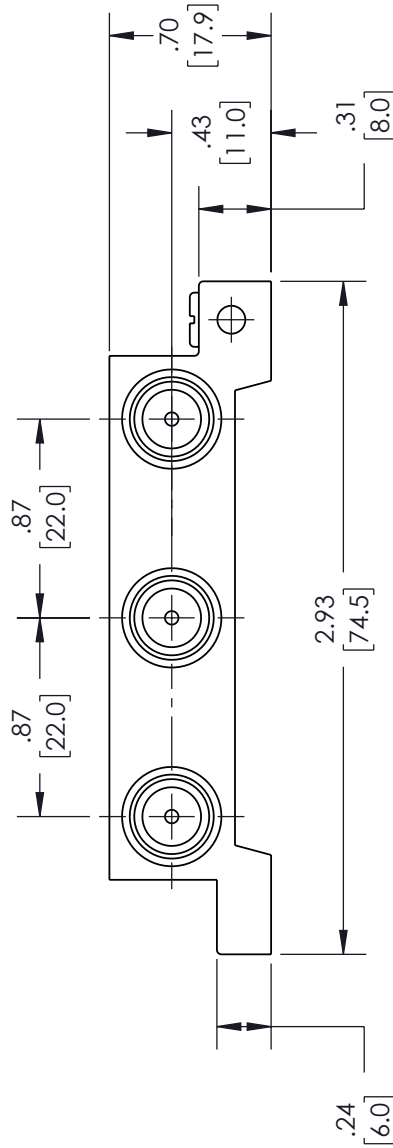
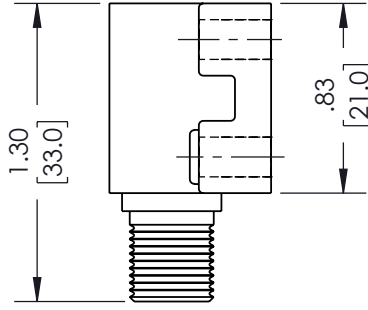
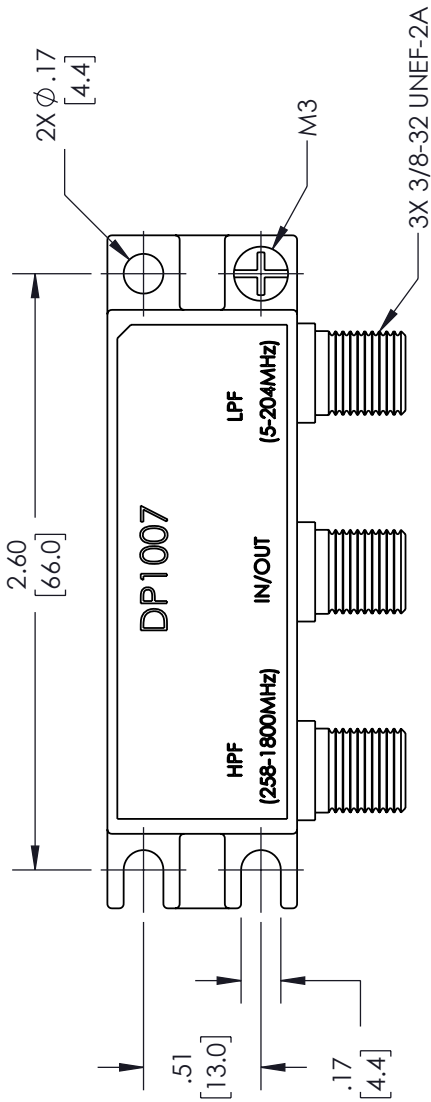
Click the following link (or enter part number in "SEARCH" on website) to obtain additional part information including price, inventory and certifications: [Diplexer, 5 to 204 MHz Low Pass, 258 to 1800 MHz High Pass, 75 Ohm Type F Female LCDP1007](#)

URL: <https://www.l-com.com/diplexer-75-ohm-type-f-female-low-pass-high-pass-lcdp1007-p.aspx>

LCDP1007 CAD Drawing

Diplexer, 5 to 204 MHz Low Pass, 258 to 1800 MHz High Pass, 75 Ohm Type F Female

REVISIONS			
REV.	DESCRIPTION	DATE	APPROVED
A	INITIAL RELEASE	11/03/22	SPONG



<p>UNLESS OTHERWISE SPECIFIED LEADING DIMENSIONS ARE INCHES DIMENSIONS IN [] ARE MILLIMETERS</p> <p>TOLERANCES:</p> <p>X = ±.2 [5.08] FRACTIONS XX = ±.02 [51] +.132 XXX = ±.005 [13] ANGLES ± 1°</p> <p>CABLE LENGTH (L) TOLERANCES: L ≤ 12 [305] = +1 [25] / -0 12 [305] < L ≤ 60 [1524] = +2 [51] / -0 60 [1524] < L ≤ 120 [3048] = +4 [102] / -0 120 [3048] < L ≤ 300 [7620] = +6 [152] / -0 300 [7620] < L = +6% L / -0</p>	<p>THIRD-ANGLE PROJECTION</p> <p>THE INFORMATION AND DESIGN IN THIS DOCUMENT IS THE PROPERTY OF L-COM GLOBAL CONNECTIVITY. ALL RIGHTS RESERVED.</p> <p>SHEET 1 OF 1</p>
	<p>SCALE N/A</p>
<p>an INFINIT[®] brand</p> <p>50 High Street, West Mill, 3rd Floor, Suite #30 North Andover, MA 01845 USA Phone: 1.800.341.5266 1.978.682.6936 Fax: 1.978.689.9484 Website: www.L-com.com E-mail: CustomerService@L-com.com</p>	<p>ITEM NO. LCDP1007</p>
<p>SIZE A</p>	<p>REV A</p>
<p>DRAWN BY VTHANGARAJ</p>	<p>SCALE N/A</p>

THESE COMMODITIES, TECHNOLOGY OR SOFTWARE WERE EXPORTED FROM THE UNITED STATES IN ACCORDANCE WITH THE EXPORT ADMINISTRATION REGULATIONS. DIVERSION CONTRARY TO U.S. LAW PROHIBITED.

T:Rev D