

156 to 163 MHz, Omni Marine Antenna,  
7 dBi, UHF Female (SO239) Connector, White,  
Fiberglass Radome, Vertical Polarization

## LCMAROM1007

### Features

- Marine grade omni antenna
- Fiberglass strong material
- U-Bolt bracket
- SO239 Female connector
- 156 to 163 MHz, 7 dBi
- Yacht, boats and other marine vehicles
- Dual pole attached long antenna
- IP67 rated antenna

### Applications

- Port operations
- Boater calling
- Commercial and Non-commercial communications
- International distress, safety and calling (156.80 MHz)
- Coast guard communications
- Marine radios on boats, pontoon, sailboats or yacht
- AIS calling
- Marine operators
- Weather monitoring

### Description

The L-com LCMAROM1007 is a single band omni marine antenna that ships on the same day as ordered. Our vertical polarized antenna with 156 to 163 MHz frequency range has a UHF female connector. This antenna with a white radome made of fiberglass has an overall length of 125.98 inch, a width of 1.30 inch, and a weight of 2.87 lbs.

L-com's LCMAROM1007 is a single band antenna operating from 156 to 163 MHz with 7 dBi gain. The omni directional antenna has a maximum input VSWR of 1.5:1.

L-com has one of the largest in-stock collections of omni directional antennas with our wide selection of superior quality RF parts, that ship same day. Make your online purchase right now to take advantage of our same-day shipping. For further information on similar products, our expert technical support and knowledgeable sales team can help you get the ideal single band omni antenna as per your requirement.

### Configuration

Design	Marine
Band Type	Single
Radiation Pattern	Omni Directional
Polarization	Vertical
Cable Type	SO239
Connector Type	UHF Female
Number of Ports	1

### Electrical Specifications

Description	Minimum	Typical	Maximum	Units
Frequency Range	156		163	MHz
Input VSWR			1.5:1	
Impedance		50		Ohms
Gain		7		dBi
Horizontal (Azimuth) HPBW		360		Degrees
Input Power			50	Watts

### Mechanical Specifications

Radome Material	Fiberglass
-----------------	------------

156 to 163 MHz, Omni Marine Antenna,  
7 dBi, UHF Female (SO239) Connector, White,  
Fiberglass Radome, Vertical Polarization

## LCMAROM1007

### Size

Length	125.98 in [319.99 cm]
Width	1.3 in [33.02 mm]
Height	2.5 in [63.5 mm]
Weight	2.87 lbs [1.3 kg]

### Environmental Specifications

#### Temperature

Operating Range	-40 to +80 deg C
-----------------	------------------

**Compliance Certifications** (see [product page](#) for current document)

### Plotted and Other Data

Notes:

### Typical Radiation Pattern

### Appendix

**Electrical Downtilt:** Angle in the antenna's elevation pattern in which the maximum gain occurs.

**Gain:** Antenna's average gain.

**Front to Back Ratio @ 180°±30°:** Average difference between the antenna's maximum gain and the maximum gain in the antenna's back lobe over ±30° angles.

**Cross-polarization Ratio (dB):** Typical difference between the co-polarization and cross-polarization gain across the sector's 3 dB Beam Width.

Dedicated to serving the needs of the Wireless Internet Service Provider (WISP) market, KP Performance Antennas offers purpose built products that reliably perform in the field. KP Performance Antennas product line consists of Yagi, Grid, Omni, Dish and other style antennas that operate in the 900 MHz, 2.4 GHz, 3 GHz, and 5 GHz frequencies.

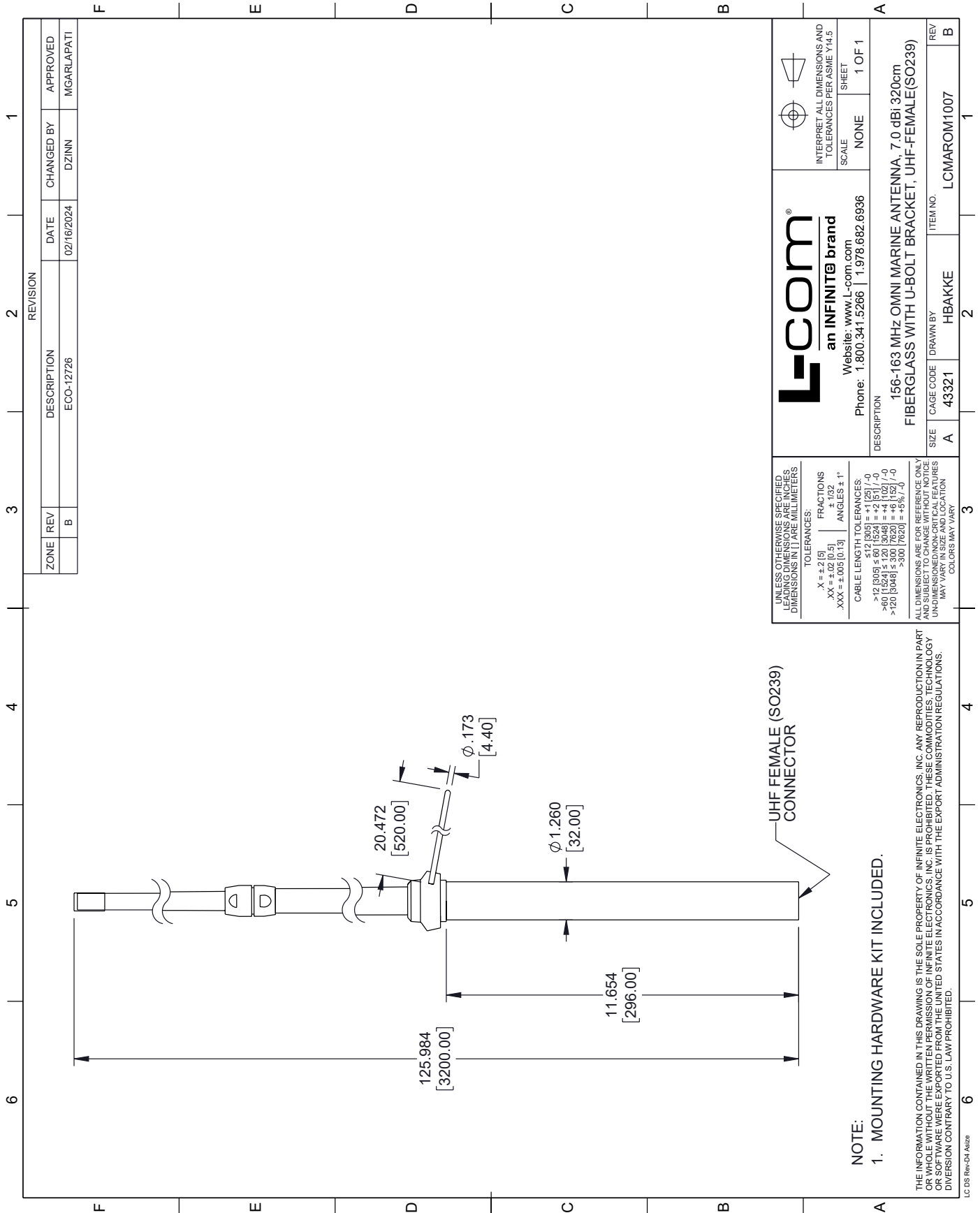
156 to 163 MHz, Omni Marine Antenna, 7 dBi, UHF Female (SO239) Connector, White, Fiberglass Radome, Vertical Polarization from L-com has same day shipment for domestic and International orders. Our portfolio includes coaxial cable assemblies, connectors, adapters and custom products as well as lightning and surge protectors, NEMA rated enclosures, and an RF product line which includes antennas, amplifiers, passive, and active components.

URL: <https://www.l-com.com/156-163-mhz-omni-marine-antenna-7-dbi-uhf-female-so239-connector-white-fiberglass-radome-vertical-polarization-lcmarom1007-p.aspx>

The information contained within this document is accurate to the best of our knowledge and representative of the part described herein. It may be necessary to make modifications to the part and/or the documentation of the part in order to implement improvements. L-com reserves the right to make such changes as required. Unless otherwise stated, all specifications are nominal. L-com does not make any representation or warranty regarding the suitability of the part described herein for any particular purpose, and L-com does not assume liability arising out of the use of any part or document.

# LCMAROM1007 CAD Drawing

156 to 163 MHz, Omni Marine Antenna, 7 dBi, UHF Female (SO239)  
Connector, White, Fiberglass Radome, Vertical Polarization



<b>L-com</b> an INFINITE brand Website: www.L-com.com Phone: 1.800.341.5266   1.978.682.6936		INTERPRET ALL DIMENSIONS AND TOLERANCES PER ASME Y14.5 SCALE NONE SHEET 1 OF 1	
UNLESS OTHERWISE SPECIFIED LEADING DIMENSIONS ARE INCHES DIMENSIONS IN [ ] ARE MILLIMETERS TOLERANCES: .X = ±.2 [5] FRACTIONS .XX = ±.02 [0.5] ± .032 .XXX = ±.005 [0.13] ANGLES ± 1° CABLE LENGTH TOLERANCES: ≤12 [305] ± .1 [25] / -0 >12 [305] ≤ 60 [1524] = +.2 [5] / -0 >60 [1524] ≤ 120 [3048] = +.4 [102] / -0 >120 [3048] ≤ 300 [7620] = +.8 [20] / -0 >300 [7620] = +.8 [20] / -0 ALL DIMENSIONS ARE FOR REFERENCE ONLY UNLESS OTHERWISE SPECIFIED. UNDIMENSIONED CRITICAL FEATURES MAY VARY IN SIZE AND LOCATION. COLORS MAY VARY.		DESCRIPTION 156-163 MHz OMNI MARINE ANTENNA, 7.0 dBi 320cm FIBERGLASS WITH U-BOLT BRACKET, UHF-FEMALE(SO239)	
ZONE	REV	DESCRIPTION	DATE
	B	ECO-12726	02/16/2024
REVISION		CHANGED BY	APPROVED
		DZINN	MGARLAPATI
SIZE	CAGE CODE	DRAWN BY	ITEM NO.
A	43321	HBAKKE	LCMAROM1007
REV	REV		
B	1		