

136 to 174 MHz, Omni Marine Antenna,
3.5 dBi, UHF Female (SO239) Connector, White,
Stainless Steel Radome, Vertical Polarization

LCMAROM1008



Features

- Marine grade omni antenna
- Stainless steel whip
- L bracket
- SO239 Female connector
- 136 to 174 MHz, 3.5 dBi
- Yacht, boats and other marine vehicles
- Single pole long antenna
- IP67 rated antenna

Applications

- Port operations
- Boater calling
- Commercial and Non-commercial communications
- International distress, safety and calling (156.80 MHz)
- Coast guard communications
- Marine radios on boats, pontoon, sailboats or yacht
- AIS calling
- Marine operators
- Weather monitoring

Description

The L-com LCMAROM1008 is a single band omni marine antenna that ships on the same day as ordered. Our vertical polarized antenna with 136 to 174 MHz frequency range has a UHF female connector. This antenna with a white radome made of stainless steel has an overall length of 53.15 inch, a width of 1.5 inch, and a weight of 0.88 lbs.

L-com's LCMAROM1008 is a single band antenna operating from 136 to 174 MHz with 3.5 dBi gain. The omni directional antenna has a maximum input VSWR of 1.5:1.

L-com has one of the largest in-stock collections of omni directional antennas with our wide selection of superior quality RF parts, that ship same day. Make your online purchase right now to take advantage of our same-day shipping. For further information on similar products, our expert technical support and knowledgeable sales team can help you get the ideal single band omni antenna as per your requirement.

Configuration

Design	Marine
Band Type	Single
Radiation Pattern	Omni Directional
Polarization	Vertical
Cable Type	SO239
Connector Type	UHF Female
Number of Ports	1

Electrical Specifications

Description	Minimum	Typical	Maximum	Units
Frequency Range	136		174	MHz
Input VSWR			1.5:1	
Impedance		50		Ohms
Gain		3.5		dBi
Horizontal (Azimuth) HPBW		360		Degrees
Input Power			50	Watts

Mechanical Specifications

Radome Material	Stainless steel
-----------------	-----------------

136 to 174 MHz, Omni Marine Antenna,
3.5 dBi, UHF Female (SO239) Connector, White,
Stainless Steel Radome, Vertical Polarization

LCMAROM1008



Size

Length	53.15 in [135 cm]
Width	1.5 in [38.1 mm]
Height	1.5 in [38.1 mm]
Weight	0.88 lbs [399.16 g]

Environmental Specifications

Temperature

Operating Range -40 to +80 deg C

Compliance Certifications (see [product page](#) for current document)

Plotted and Other Data

Notes:

Typical Radiation Pattern

Appendix

Electrical Downtilt: Angle in the antenna's elevation pattern in which the maximum gain occurs.

Gain: Antenna's average gain.

Front to Back Ratio @ 180°±30°: Average difference between the antenna's maximum gain and the maximum gain in the antenna's back lobe over ±30° angles.

Cross-polarization Ratio (dB): Typical difference between the co-polarization and cross-polarization gain across the sector's 3 dB Beam Width.

Dedicated to serving the needs of the Wireless Internet Service Provider (WISP) market, KP Performance Antennas offers purpose built products that reliably perform in the field. KP Performance Antennas product line consists of Yagi, Grid, Omni, Dish and other style antennas that operate in the 900 MHz, 2.4 GHz, 3 GHz, and 5 GHz frequencies.

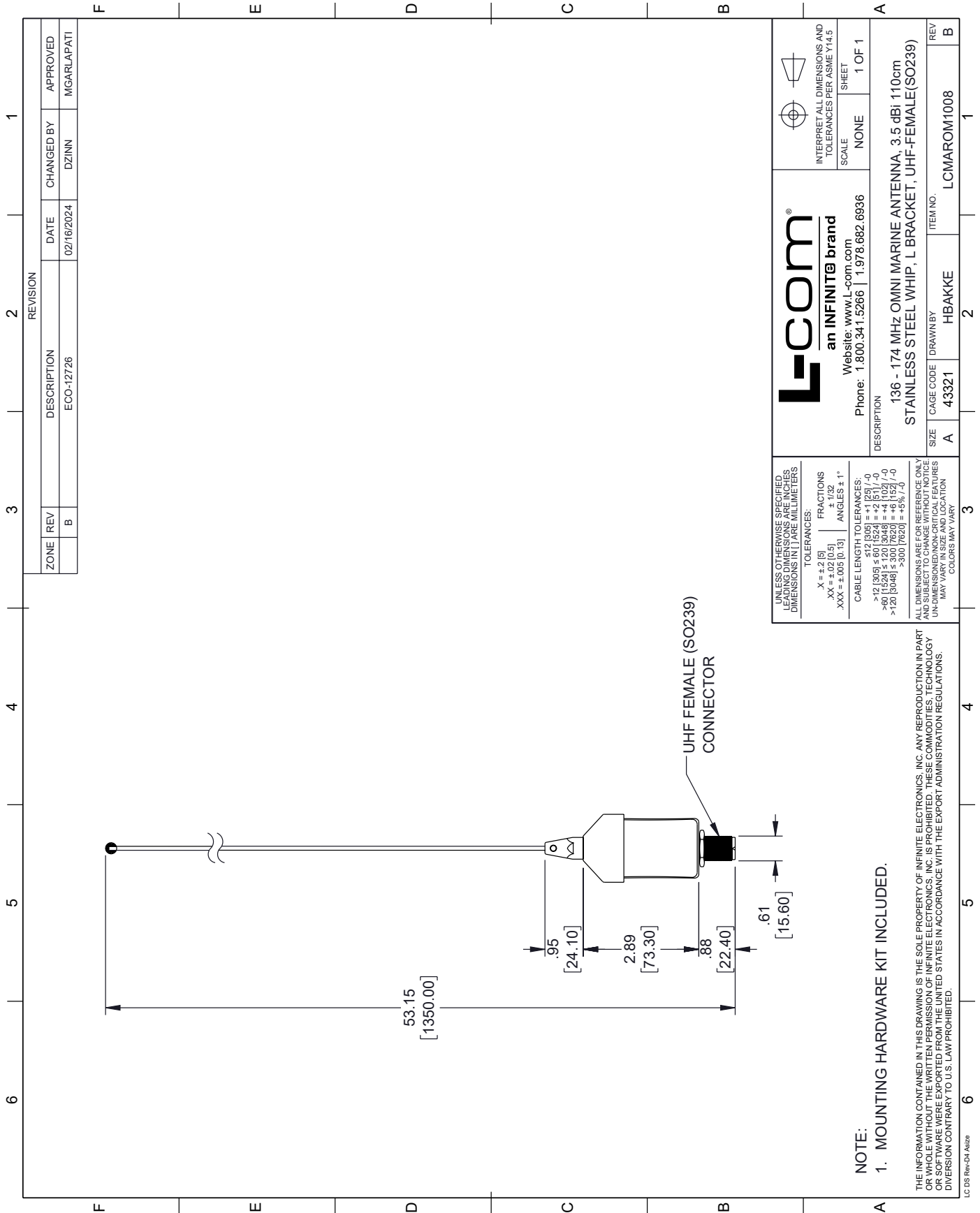
136 to 174 MHz, Omni Marine Antenna, 3.5 dBi, UHF Female (SO239) Connector, White, Stainless Steel Radome, Vertical Polarization from L-com has same day shipment for domestic and International orders. Our portfolio includes coaxial cable assemblies, connectors, adapters and custom products as well as lightning and surge protectors, NEMA rated enclosures, and an RF product line which includes antennas, amplifiers, passive, and active components.

URL: <https://www.l-com.com/136-174-mhz-omni-marine-antenna-3.5-dbi-uhf-female-so239-connector-white-stainless-steel-radome-vertical-polarization-lcmarom1008-p.aspx>

The information contained within this document is accurate to the best of our knowledge and representative of the part described herein. It may be necessary to make modifications to the part and/or the documentation of the part in order to implement improvements. L-com reserves the right to make such changes as required. Unless otherwise stated, all specifications are nominal. L-com does not make any representation or warranty regarding the suitability of the part described herein for any particular purpose, and L-com does not assume liability arising out of the use of any part or document.

LCMAROM1008 CAD Drawing

136 to 174 MHz, Omni Marine Antenna, 3.5 dBi, UHF Female (SO239)
Connector, White, Stainless Steel Radome, Vertical Polarization



NOTE:
1. MOUNTING HARDWARE KIT INCLUDED.

ALL DIMENSIONS ARE FOR REFERENCE ONLY. UNLESS OTHERWISE SPECIFIED, LEADING DIMENSIONS ARE IN INCHES AND DIMENSIONS IN PARENS ARE IN MILLIMETERS. UNLESS OTHERWISE SPECIFIED, LEADING DIMENSIONS ARE IN INCHES AND DIMENSIONS IN PARENS ARE IN MILLIMETERS. UNLESS OTHERWISE SPECIFIED, LEADING DIMENSIONS ARE IN INCHES AND DIMENSIONS IN PARENS ARE IN MILLIMETERS. UNLESS OTHERWISE SPECIFIED, LEADING DIMENSIONS ARE IN INCHES AND DIMENSIONS IN PARENS ARE IN MILLIMETERS. UNLESS OTHERWISE SPECIFIED, LEADING DIMENSIONS ARE IN INCHES AND DIMENSIONS IN PARENS ARE IN MILLIMETERS.

LC DS Rev-04 Altze

<p>UNLESS OTHERWISE SPECIFIED LEADING DIMENSIONS ARE IN INCHES AND DIMENSIONS IN PARENS ARE IN MILLIMETERS</p> <p>TOLERANCES:</p> <p>X = ±.2 [5] FRACTIONS ± 1/32 .XX = ±.02 [0.5] ANGLES ± 1° .XXX = ±.005 [0.13]</p> <p>CABLE LENGTH TOLERANCES:</p> <p>>12 [305] ≤ 60 [1524] = +1 [25] / -0 >60 [1524] ≤ 120 [3048] = +4 [102] / -0 >120 [3048] ≤ 300 [7620] = +5 [127] / -0 >300 [7620] = +5 [127] / -0</p> <p>ALL DIMENSIONS ARE FOR REFERENCE ONLY. UNLESS OTHERWISE SPECIFIED, LEADING DIMENSIONS ARE IN INCHES AND DIMENSIONS IN PARENS ARE IN MILLIMETERS. UNLESS OTHERWISE SPECIFIED, LEADING DIMENSIONS ARE IN INCHES AND DIMENSIONS IN PARENS ARE IN MILLIMETERS. UNLESS OTHERWISE SPECIFIED, LEADING DIMENSIONS ARE IN INCHES AND DIMENSIONS IN PARENS ARE IN MILLIMETERS.</p>		<p>L-com an INFINITE brand</p> <p>Website: www.L-com.com</p> <p>Phone: 1.800.341.5266 1.978.682.6936</p>		<p>INTERPRET ALL DIMENSIONS AND TOLERANCES PER ASME Y14.5</p> <p>SCALE NONE</p> <p>SHEET 1 OF 1</p>	
<p>ZONE REV B</p> <p>DESCRIPTION ECO-12726</p> <p>DATE 02/16/2024</p> <p>CHANGED BY DZINN</p> <p>APPROVED MGARLAPATI</p>		<p>DESCRIPTION 136 - 174 MHz OMNI MARINE ANTENNA, 3.5 dBi 110cm STAINLESS STEEL WHIP, L BRACKET, UHF-FEMALE(SO239)</p> <p>SIZE A</p> <p>CAGE CODE 43321</p> <p>DRAWN BY HBAKKE</p> <p>ITEM NO. LCMAROM1008</p>		<p>REV B</p>	