

Reinforced ABS 4-way Ratchet Marine mount with Standard 1"-14 male threads for marine antenna

LCMARRM01



Features

- ABS marine grade mount
- Dual swivel ratchet style
- 1"-14 male threaded
- High durable material
- Anti corrosion
- Flat base fixture

Applications

- Marine antenna mounts
- Marine communication: VHF, GPS, satellite phones
- Navigation: Radar, sonar, depth finders
- Fishing: Fish finders, sonar-based equipment
- Entertainment: Satellite TV, radio systems
- Emergency services: Search and rescue operations

Description

The L-com LCMARRM01 dual swivel ratchet style antenna mount is offered for marine and omnidirectional antennas. This marine antenna mount is constructed of anti-corrosion ABS. Our high durable mount is ideal for marine communication, fishing, navigation, entertainment, and emergency services.

The working temperature range for our dual swivel ratchet-style installation is -40 to 80 degrees Celsius. The LCMARRM01 marine antenna mount from L-com is available in 6-inch length, 2.61-inch width, and 2.61-inch height. This antenna mount has a flat base fixture and 1"-14 male threads, making it suited for use with search and rescue equipment, satellite TV, radio systems, radar, sonar, depth finders, VHF, GPS, satellite phones, fish finders, and sonar-based equipment applications.

L-com has one of the largest in-stock selections of marine grade dual swivel ratchet style antenna mounts for international and domestic orders. Make your online purchase right now to take advantage of our same-day shipping. For further information on similar products, our expert technical support and knowledgeable sales team can help you get the perfect high durable ABS marine antenna mount for your requirements.

Mechanical Specifications

Size

Length	6 in [152.4 mm]
Width	2.61 in [66.29 mm]
Height	2.61 in [66.29 mm]
Weight	0.55 lbs [249.48 g]

Environmental Specifications

Operating Temperature, Min	-40 deg C
Operating Temperature, Max	80 deg C
Material	ABS

Reinforced ABS 4-way Ratchet Marine mount with Standard 1"-14 male threads for marine antenna from L-com has same day shipment for domestic and International orders. Our portfolio includes coaxial cable assemblies, connectors, adapters and custom products as well as lightning and surge protectors, NEMA rated enclosures, and an RF product line which includes antennas, amplifiers, passive,

Click the following link (or enter part number in "SEARCH" on website) to obtain additional part information including price, inventory and certifications:
[Reinforced ABS 4-way Ratchet Marine mount with Standard 1"-14 male threads for marine antenna](#)

Reinforced ABS 4-way Ratchet Marine mount with
Standard 1"-14 male threads for marine antenna

LCMARRM01

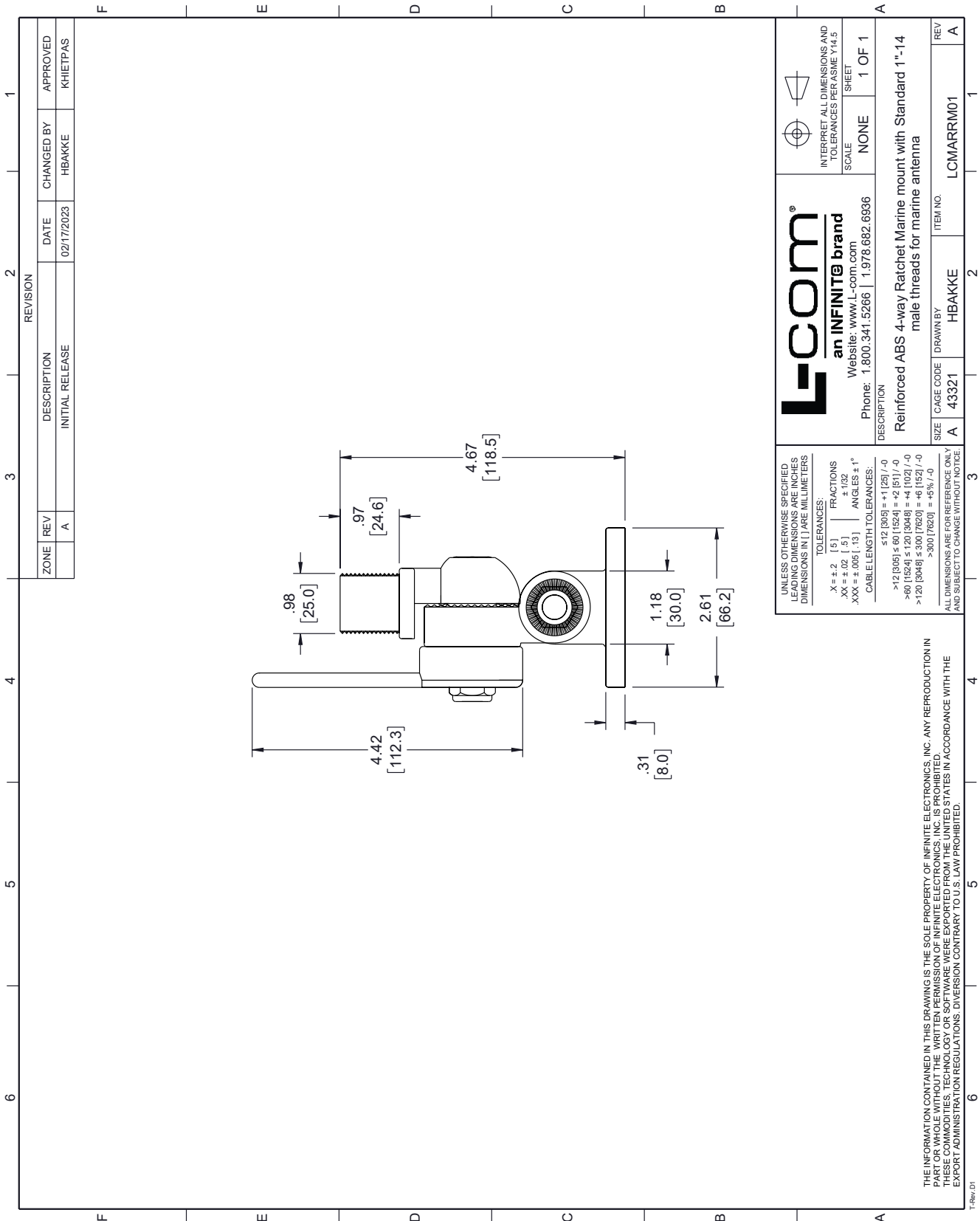


and active components.

The information contained within this document is accurate to the best of our knowledge and representative of the part described herein. It may be necessary to make modifications to the part and/or the documentation of the part in order to implement improvements. L-com reserves the right to make such changes as required. Unless otherwise stated, all specifications are nominal. L-com does not make any representation or warranty regarding the suitability of the part described herein for any particular purpose, and L-com does not assume liability arising out of the use of any part or document.

Reinforced ABS 4-way Ratchet Marine mount with Standard 1"-14 male threads for marine antenna

L-com CAD Drawing



ZONE		REV		DESCRIPTION		DATE		CHANGED BY		APPROVED	
		A		INITIAL RELEASE		02/17/2023	HBAKKE	KHIETPAS			

REVISION	

UNLESS OTHERWISE SPECIFIED, LEADING DIMENSIONS ARE INCHES, DIMENSIONS IN [] ARE MILLIMETERS.

TOLERANCES:
 X = ±.2 [5] FRACTIONS
 XX = ±.02 [5] ANGLES ±1°
 XXX = ±.005 [13] ANGLES ±1°

CABLE LENGTH TOLERANCES:
 ≤12 [305] = ±1 [25] / -0
 >12 [305] ≤ 60 [1524] = ±2 [51] / -0
 >60 [1524] ≤ 120 [3048] = ±4 [102] / -0
 >120 [3048] ≤ 300 [7620] = ±6 [152] / -0
 >300 [7620] = ±5% / -0

ALL DIMENSIONS ARE FOR REFERENCE ONLY AND SUBJECT TO CHANGE WITHOUT NOTICE.

THE INFORMATION CONTAINED IN THIS DRAWING IS THE SOLE PROPERTY OF INFINITE ELECTRONICS, INC. ANY REPRODUCTION IN PART OR WHOLE WITHOUT THE WRITTEN PERMISSION OF INFINITE ELECTRONICS, INC. IS PROHIBITED. THESE COMMODITIES, TECHNOLOGY OR SOFTWARE WERE EXPORTED FROM THE UNITED STATES IN ACCORDANCE WITH THE EXPORT ADMINISTRATION REGULATIONS. DIVERSION CONTRARY TO U.S. LAW PROHIBITED.

T-Rev: 01

L-com
 an INFINITE brand
 Website: www.L-com.com
 Phone: 1.800.341.5266 | 1.978.682.6936

INTERPRET ALL DIMENSIONS AND TOLERANCES PER ASME Y14.5 SHEET

SCALE: NONE 1 OF 1

DESCRIPTION: Reinforced ABS 4-way Ratchet Marine mount with Standard 1"-14 male threads for marine antenna

SIZE	A	CAGE CODE	43321	DRAWN BY	HBAKKE	ITEM NO.	LCMARRM01
REV	A						