

0.5 Watt 50 Ohm SMA Male to 75 Ohm F Male
Matching Pad Operating from DC to 3 GHz



LCMP1107

Matching Pads Technical Data Sheet

Features

- DC to 3 GHz Frequency Range
- Low VSWR < 1.25:1
- 0.5 W Max Power (CW)

Applications

- CATV / Cable Networks
- Test and Measurement
- Communication Systems
- Wireless Systems

Description

L-com's LCMP1107 is a 50 ohm SMA male to 75 ohm F male matching pad that operates from DC to 3 GHz. This SMA to F impedance matching pad offers a low VSWR of 1.25:1 max and attenuation of 7.5 dB max. LCMP1107 50 ohm to 75 ohm minimum loss pad has a maximum CW power rating of 0.5 Watt. Matching pads are used to match the different impedance between two devices, maximizing power transfer between the two impedances. L-com's minimum loss impedance matching pads are available in various connector combinations to fit your needs, all of which ship the same day.

Configuration

| | |
|-------------|------------------|
| Connector 1 | 50 Ohms SMA Male |
| Connector 2 | 75 Ohms F Male |

Electrical Specifications

| Description | Minimum | Typical | Maximum | Units |
|------------------|---------|---------|---------|-------|
| Frequency Range | DC | | 3 | GHz |
| VSWR | | 1.15:1 | 1.25:1 | |
| Attenuation | | 4 | 7.5 | dB |
| Input Power (CW) | | | 0.5 | Watts |

Mechanical Specifications

Size

| | |
|--------|--------------------|
| Length | 2.04 in [51.82 mm] |
| Width | 0.5 in [12.7 mm] |
| Height | 0.5 in [12.7 mm] |
| Weight | 0.04 lbs [18.14 g] |

| | |
|------------------------------|------------------|
| Housing Material and Plating | Brass, Tri-Metal |
|------------------------------|------------------|

Connectors

| Description | Connector 1 | Connector 2 |
|--------------------------------------|-----------------------|-----------------------|
| Type | SMA Male | F Male |
| Impedance | 50 Ohms | 75 Ohms |
| Inner Conductor Material and Plating | Phosphor Bronze, Gold | Phosphor Bronze, Gold |
| Body Material and Plating | Brass, Tri-metal | Brass, Tri-metal |

Click the following link (or enter part number in "SEARCH" on website) to obtain additional part information including price, inventory and certifications:
[0.5 Watt 50 Ohm SMA Male to 75 Ohm F Male Matching Pad Operating from DC to 3 GHz LCMP1107](#)

0.5 Watt 50 Ohm SMA Male to 75 Ohm F Male Matching Pad Operating from DC to 3 GHz



LCMP1107

Environmental Specifications

Compliance Certifications (see [product page](#) for current document)

Plotted and Other Data

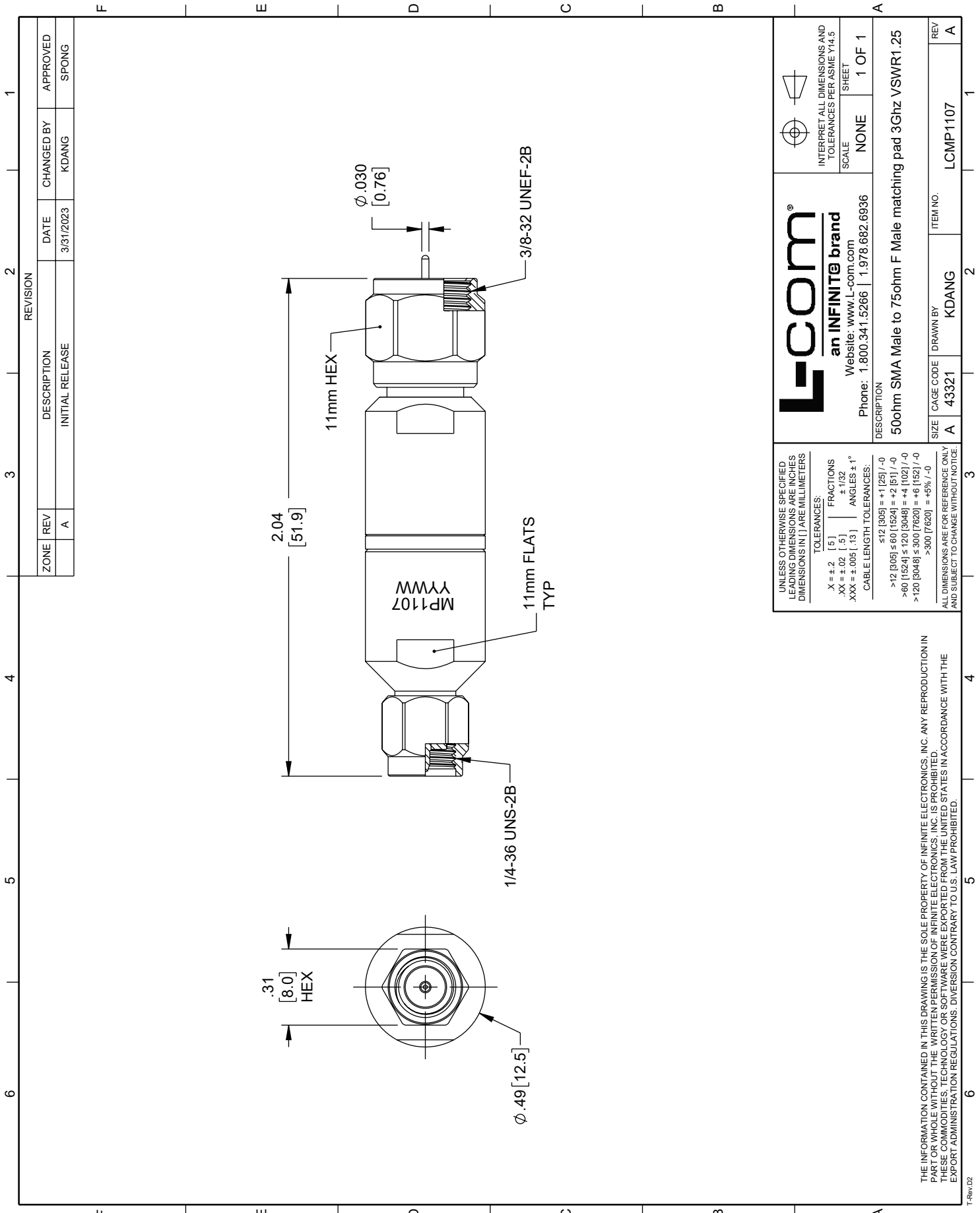
Notes:

Our portfolio includes coaxial cable assemblies, connectors, adapters and custom products as well as lightning and surge protectors, NEMA rated enclosures, and an RF product line which includes antennas, amplifiers, passive, and active components.

The information contained in this document is accurate to the best of our knowledge and representative of the part described herein. It may be necessary to make modifications to the part and/or the documentation of the part, in order to implement improvements. L-com reserves the right to make such changes as required. Unless otherwise stated, all specifications are nominal. L-com does not make any representation or warranty regarding the suitability of the part described herein for any particular purpose, and L-com does not assume any liability arising out of the use of any part or documentation.

LCMP1107 CAD Drawing

0.5 Watt 50 Ohm SMA Male to 75 Ohm F Male Matching Pad Operating from DC to 3 GHz



| ZONE | | REVISION | | DATE | | APPROVED | |
|------|-----|-----------------|------------|-----------|------|------------|----------|
| A | REV | DESCRIPTION | CHANGED BY | DATE | DATE | CHANGED BY | APPROVED |
| A | | INITIAL RELEASE | KDANG | 3/31/2023 | | KDANG | SPONG |

L-com
an INFINITE brand
Website: www.L-com.com
Phone: 1.800.341.5266 | 1.978.682.6936

UNLESS OTHERWISE SPECIFIED
LEADING DIMENSIONS ARE INCHES
DIMENSIONS IN [] ARE MILLIMETERS

TOLERANCES:
 .X = ±.2 [5] | FRACTIONS ± 1/32
 .XX = ±.02 [.5] | ANGLES ± 1°
 .XXX = ±.005 [.13]

CABLE LENGTH TOLERANCES:
 <12 [305] = +1 [25] / -0
 >12 [305] ≤ 60 [1524] = +2 [51] / -0
 >60 [1524] ≤ 120 [3048] = +4 [102] / -0
 >120 [3048] ≤ 300 [7620] = +6 [152] / -0
 >300 [7620] = +5% / -0

INTERPRET ALL DIMENSIONS AND TOLERANCES PER ASME Y14.5
SCALE NONE SHEET 1 OF 1

DESCRIPTION
50ohm SMA Male to 75ohm F Male matching pad 3Ghz VSWR1.25

SIZE A CAGE CODE A 43321 DRAWN BY KDANG ITEM NO. LCMP1107 REV A

THE INFORMATION CONTAINED IN THIS DRAWING IS THE SOLE PROPERTY OF INFINITE ELECTRONICS, INC. ANY REPRODUCTION IN WHOLE OR IN PART WITHOUT THE WRITTEN PERMISSION OF INFINITE ELECTRONICS, INC. IS PROHIBITED. THESE COMMODITIES, TECHNOLOGY OR SOFTWARE WERE EXPORTED FROM THE UNITED STATES IN ACCORDANCE WITH THE EXPORT ADMINISTRATION REGULATIONS. DIVERSION CONTRARY TO U.S. LAW PROHIBITED.

T-Rev D2