

0.5 Watt 50 Ohm SMA Male to 75 Ohm F Female
Matching Pad Operating from DC to 3 GHz



LCMP1108

Matching Pads Technical Data Sheet

Features

- DC to 3 GHz Frequency Range
- Low VSWR < 1.25:1
- 0.5 W Max Power (CW)

Applications

- CATV / Cable Networks
- Test and Measurement
- Communication Systems
- Wireless Systems

Description

L-com's LCMP1108 is a 50 ohm SMA male to 75 ohm F female matching pad that operates from DC to 3 GHz. This SMA to F impedance matching pad offers a low VSWR of 1.25:1 max and attenuation of 7.5 dB max. LCMP1108 50 ohm to 75 ohm minimum loss pad has a maximum CW power rating of 0.5 Watt. Matching pads are used to match the different impedance between two devices, maximizing power transfer between the two impedances. L-com's minimum loss impedance matching pads are available in various connector combinations to fit your needs, all of which ship the same day.

Configuration

Connector 1	50 Ohms SMA Male
Connector 2	75 Ohms F Female

Electrical Specifications

Description	Minimum	Typical	Maximum	Units
Frequency Range	DC		3	GHz
VSWR		1.15:1	1.25:1	
Attenuation		4	7.5	dB
Input Power (CW)			0.5	Watts

Mechanical Specifications

Size

Length	1.9 in [48.26 mm]
Width	0.49 in [12.45 mm]
Height	0.49 in [12.45 mm]
Weight	0.04 lbs [18.14 g]

Housing Material and Plating	Brass, Tri-Metal
------------------------------	------------------

Connectors

Description	Connector 1	Connector 2
Type	SMA Male	F Female
Impedance	50 Ohms	75 Ohms
Inner Conductor Material and Plating	Brass, Gold	Beryllium Copper, Gold
Body Material and Plating	Brass, Tri-metal	Brass, Tri-metal

Click the following link (or enter part number in "SEARCH" on website) to obtain additional part information including price, inventory and certifications:
[0.5 Watt 50 Ohm SMA Male to 75 Ohm F Female Matching Pad Operating from DC to 3 GHz LCMP1108](#)

0.5 Watt 50 Ohm SMA Male to 75 Ohm F Female Matching Pad Operating from DC to 3 GHz



LCMP1108

Environmental Specifications

Compliance Certifications (see [product page](#) for current document)

Plotted and Other Data

Notes:

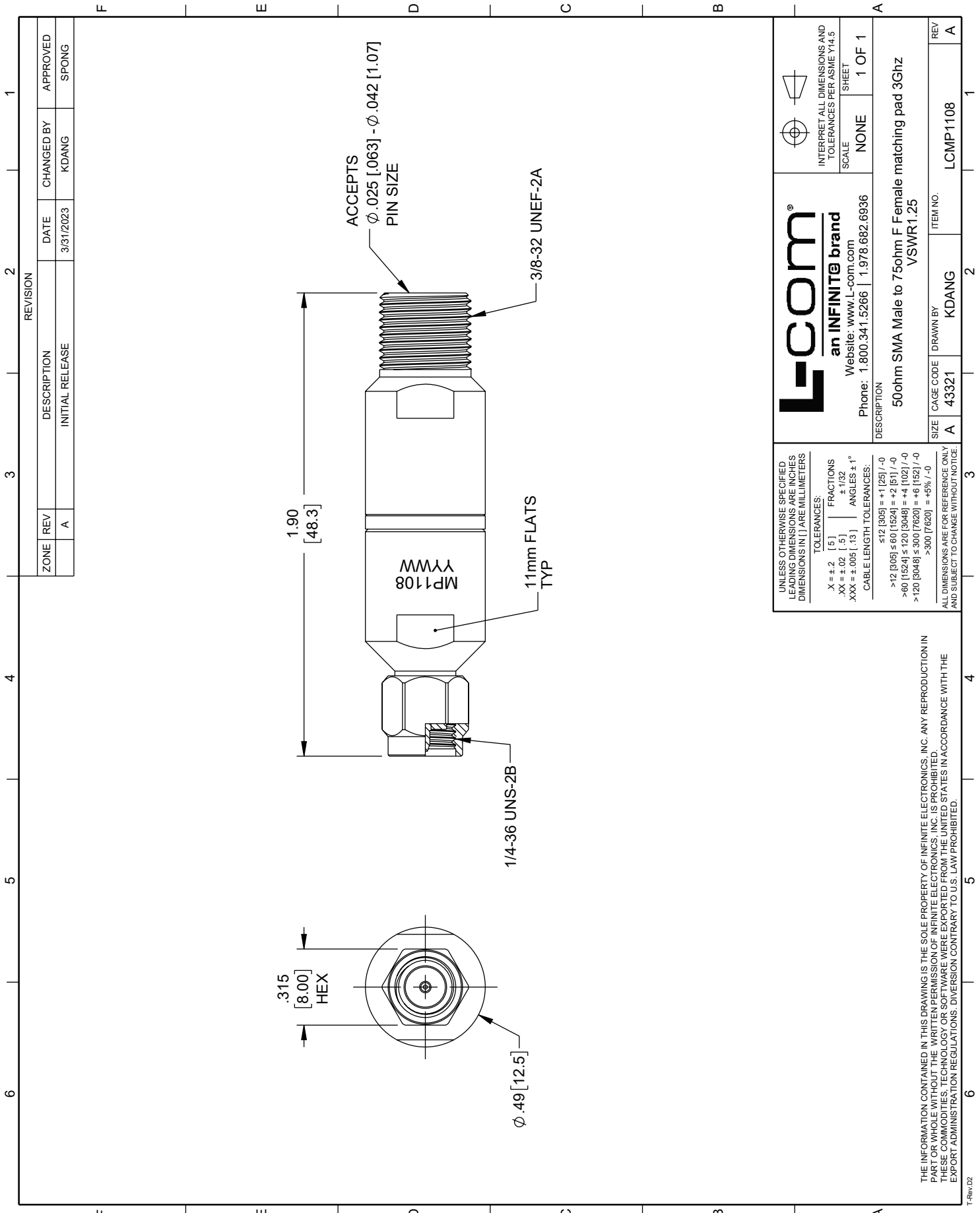
Our portfolio includes coaxial cable assemblies, connectors, adapters and custom products as well as lightning and surge protectors, NEMA rated enclosures, and an RF product line which includes antennas, amplifiers, passive, and active components.

The information contained in this document is accurate to the best of our knowledge and representative of the part described herein. It may be necessary to make modifications to the part and/or the documentation of the part, in order to implement improvements. L-com reserves the right to make such changes as required. Unless otherwise stated, all specifications are nominal. L-com does not make any representation or warranty regarding the suitability of the part described herein for any particular purpose, and L-com does not assume any liability arising out of the use of any part or documentation.

LCMP1108 CAD Drawing

0.5 Watt 50 Ohm SMA Male to 75 Ohm F Female

Matching Pad Operating from DC to 3 GHz



ZONE		REV	DESCRIPTION	DATE	CHANGED BY	APPROVED
		A	INITIAL RELEASE	3/31/2023	KDANG	SPONG

REVISION	
3	
2	
1	

L-com
an INFINITE brand
Website: www.L-com.com
Phone: 1.800.341.5266 | 1.978.682.6936

INTERPRET ALL DIMENSIONS AND TOLERANCES PER ASME Y14.5
SCALE NONE SHEET 1 OF 1

DESCRIPTION: 50ohm SMA Male to 75ohm F Female matching pad 3Ghz VSWR1.25

SIZE	CAGE CODE	DRAWN BY	ITEM NO.
A	43321	KDANG	LCMP1108

REV A

UNLESS OTHERWISE SPECIFIED LEADING DIMENSIONS ARE INCHES DIMENSIONS IN [] ARE MILLIMETERS

TOLERANCES:
 .X = ±.2 [5] | FRACTIONS ± 1/32
 .XX = ±.02 [.5] | ANGLES ± 1°
 .XXX = ±.005 [.13] | CABLE LENGTH TOLERANCES:
 <12 [305] = +1 [25] / -0
 >12 [305] ≤ 60 [1524] = +2 [51] / -0
 >60 [1524] ≤ 120 [3048] = +4 [102] / -0
 >120 [3048] ≤ 300 [7620] = +6 [152] / -0
 >300 [7620] = +5% / -0

ALL DIMENSIONS ARE FOR REFERENCE ONLY AND SUBJECT TO CHANGE WITHOUT NOTICE.

THE INFORMATION CONTAINED IN THIS DRAWING IS THE SOLE PROPERTY OF INFINITE ELECTRONICS, INC. ANY REPRODUCTION IN PART OR IN WHOLE WITHOUT THE WRITTEN PERMISSION OF INFINITE ELECTRONICS, INC. IS PROHIBITED. THESE COMMODITIES, TECHNOLOGY OR SOFTWARE WERE EXPORTED FROM THE UNITED STATES IN ACCORDANCE WITH THE EXPORT ADMINISTRATION REGULATIONS. DIVERSION CONTRARY TO U.S. LAW PROHIBITED.