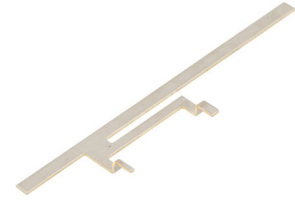


2400- 2500/ 5150- 5825 MHz, 4.35/3.24 dBi, Stamped
Metal AP/Router Embedded Antenna-50 Pack



LCSMA1012-50PK

Features

- High Efficiency
- Isotropic radiation patterns
- Linear polarization
- Ultra-Compact design
- Low loss material - Nickel-Plated brass
- Extended operating temperatures
- Case mounting or on board mount
- Dual band frequency stabilization
- 50-pack for easy buy

Applications

- IoT, M2M, Telemetry
- Wireless Remote Control
- Personal Area Networks(PAN)
- Industrial/Commercial Equipment
- 2.4/5 GHz - Wi-Fi/BT/BLE/ZigBee/ISM applications
- IEEE802.11a/b/g/n/ac embedded applications
- Remote Technology / Monitoring
- Consumer Tracking
- Smart Home / Wearables / Devices
- Agriculture, healthcare, digital signage

Description

The L-com LCSMA1012-50PK is a dual band stamped metal antenna that ships on the same day as ordered. Our linear polarized antenna has a maximum frequency of 5825 MHz and a minimum frequency of 2400 MHz. This 50-pack stamped metal antenna has an overall length of 1.45 inches and a width of 0.06 inches.

L-com's LCSMA1012-50PK is a dual band antenna operating from 2400 to 2500 MHz with 4.35 dBi gain and 5150 to 5825 MHz with 3.24 dBi gain. The omni directional antenna has a maximum input VSWR of 2:1. This 50-pack stamped metal antenna has an impedance of 50 Ohms.

L-com has one of the largest in-stock collections of omni directional antennas with our wide selection of superior quality RF parts that ship same day. Make your online purchase right now to take advantage of our same-day shipping. For further information on similar products, our expert technical support and knowledgeable sales team can help you get the ideal 50-pack stamped metal antenna as per your requirements.

Configuration

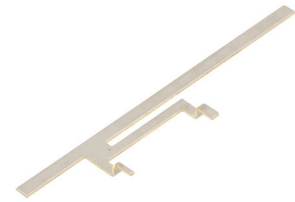
Design	Stamped Metal
Band Type	Dual
Radiation Pattern	Omni Directional
Polarization	Linear

Electrical Specifications

Description	Minimum	Typical	Maximum	Units
Frequency Range	2,400		5,825	MHz
Input VSWR			2:1	
Impedance		50		Ohms
Gain	3.24		4.35	dBi
Input Power			1	Watt

Click the following link (or enter part number in "SEARCH" on website) to obtain additional part information including price, inventory and certifications:
[2400- 2500/ 5150- 5825 MHz, 4.35/3.24 dBi, Stamped Metal AP/Router Embedded Antenna-50 Pack LCSMA1012-50PK](#)

2400- 2500/ 5150- 5825 MHz, 4.35/3.24 dBi, Stamped
Metal AP/Router Embedded Antenna-50 Pack



LCSMA1012-50PK

Specifications by Band

Description	Band 1	Band 2	Band 3	Band 4	Band 5	Units
Range	2.4-2.5	5.15-5.825				GHz
Gain	4.35	3.24				dBi

Mechanical Specifications

Size

Length	1.45 in [36.83 mm]
Width	0.06 in [1.52 mm]
Height	0.29 in [7.37 mm]

Environmental Specifications

Temperature

Operating Range	-40 to +85 deg C
-----------------	------------------

Compliance Certifications (see [product page](#) for current document)

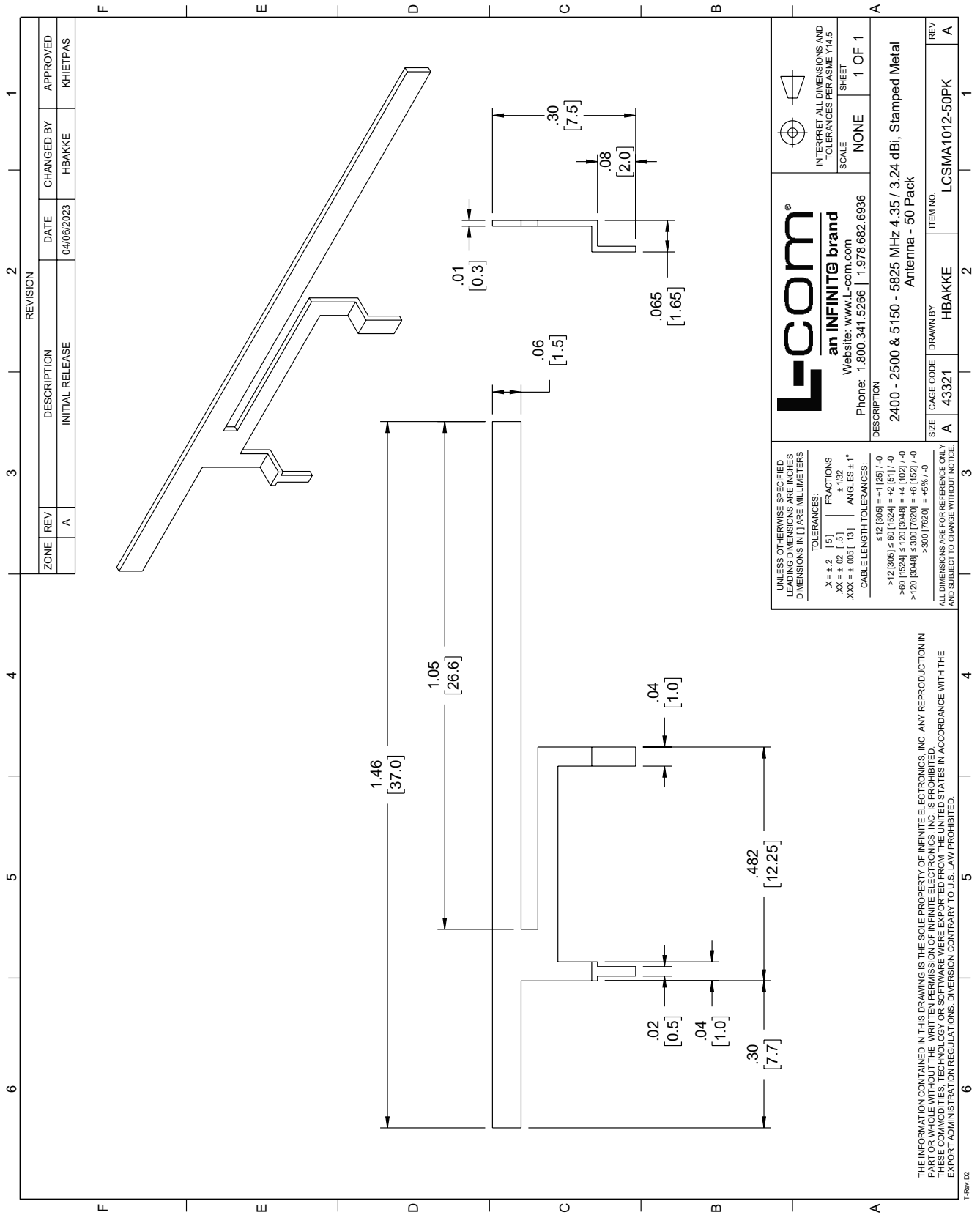
Plotted and Other Data

Notes:

2400- 2500/ 5150- 5825 MHz, 4.35/3.24 dBi, Stamped Metal AP/Router Embedded Antenna-50 Pack from L-com has same day shipment for domestic and International orders. Our portfolio includes coaxial cable assemblies, connectors, adapters and custom products as well as lightning and surge protectors, NEMA rated enclosures, and an RF product line which includes antennas, amplifiers, passive, and active components.

The information contained within this document is accurate to the best of our knowledge and representative of the part described herein. It may be necessary to make modifications to the part and/or the documentation of the part in order to impliment improvements. L-com reserves the right to make such changes as required. Unless otherwise stated, all specifications are nominal. L-com does not make any representation or warranty regarding the suitability of the part described herein for any particular purpose, and L-com does not assume liability arising out of the use of any part or document.

L-com CAD Drawing



UNLESS OTHERWISE SPECIFIED, LEADING DIMENSIONS ARE INCHES DIMENSIONS IN [] ARE MILLIMETERS		INTERPRET ALL DIMENSIONS AND TOLERANCES PER ASME Y14.5			
TOLERANCES: X = ±.2 [5] XX = ±.02 [1.5] XXX = ±.005 [13]		SCALE: NONE SHEET: 1 OF 1			
FRACTIONS: + 1/32		ANGLE: ±1°			
CABLE LENGTH TOLERANCES: ≤ 12 [305] = ±.001 [25] / -0 >.60 [1524] ≤ 1.20 [3048] = ±.002 [51] / -0 >.60 [1524] ≤ 1.20 [3048] = ±.002 [51] / -0 >1.20 [3048] ≤ 3.00 [7620] = ±.003 [76] / -0 >3.00 [7620] = ±.005 [127] / -0		DESCRIPTION: 2400 - 2500 & 5150 - 5825 MHz 4.35 / 3.24 dBi, Stamped Metal Antenna - 50 Pack			
ALL DIMENSIONS ARE FOR REFERENCE ONLY AND SUBJECT TO CHANGE WITHOUT NOTICE		L-com® an INFINITE® brand Website: www.L-com.com Phone: 1.800.341.5266 1.978.682.6936			
ZONE A	REV A	DESCRIPTION INITIAL RELEASE	DATE 04/06/2023	CHANGED BY HBAKKE	APPROVED KHIEP/AS
SIZE A	CAGE CODE 43321	DRAWN BY HBAKKE	ITEM NO. LCSMA1012-50PK		

THE INFORMATION CONTAINED IN THIS DRAWING IS THE SOLE PROPERTY OF INFINITE ELECTRONICS, INC. ANY REPRODUCTION IN
 PART OR WHOLE WITHOUT THE WRITTEN PERMISSION OF INFINITE ELECTRONICS, INC. IS PROHIBITED.
 THESE COMMODITIES, TECHNOLOGY OR SOFTWARE WERE EXPORTED FROM THE UNITED STATES IN ACCORDANCE WITH THE
 EXPORT ADMINISTRATION REGULATIONS. DIVERSION CONTRARY TO U.S. LAW PROHIBITED.