

2 Watt RF Load DC to 12 GHz With SMA Female Stainless Steel Body



**LCTR1146**

**Features**

- DC to 12 GHz Frequency Range
- 50 Ohm Impedance
- SMA Female Coaxial Interface
- Max VSWR 1.15:1
- Max Power 2 Watts (CW)

**Applications**

- WIFI 6E
- 5G Cellular bands
- SatCom
- Radar Systems
- Test and Measurement
- Commercial and Military Communication

**Description**

L-com's LCTR1146 is an RF termination (also called RF load or dummy load) that operates from DC to 12 GHz and handles up to 2 Watt (CW). Our SMA termination / load has a female gender. LCTR1146 SMA load termination offers 1.15:1 max VSWR.

RF load / terminations are indispensable components in many RF, microwave and millimeter wave systems where signal reflection from unused ports can potentially damage the device or reduce the signal integrity. By using a terminator on an unused port with a matched load (dummy load), the incident energy will be absorbed with minimal reflection. These termination components are commonly used to terminate devices such as couplers, circulators, and switches. They are also widely used in measurement systems to ensure accurate results. L-com offers a huge selection of RF, microwave and millimeter wave terminations up to 65 GHz with excellent performance over the entire operating range and power handling capabilities up to 800 Watt (CW).

**Electrical Specifications**

Description	Minimum	Typical	Maximum	Units
Frequency Range	DC		12	GHz
Impedance		50		Ohms
VSWR			1.15:1	
Input Power (CW)			2	Watts
Derated linearly to 1W at +165°C				
Dielectric Withstanding Voltage (DC)			1,500	Vdc
Operating Voltage (DC)			500	Vdc

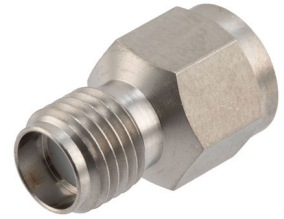
**Mechanical Specifications**

**Size**

Length	0.559 in [14.2 mm]
Width	0.315 in [8 mm]
Height	0.315 in [8 mm]
Weight	0.004 lbs [1.81 g]

Click the following link (or enter part number in "SEARCH" on website) to obtain additional part information including price, inventory and certifications:  
[2 Watt RF Load DC to 12 GHz With SMA Female Stainless Steel Body LCTR1146](#)

2 Watt RF Load DC to 12 GHz With SMA Female Stainless Steel Body



**LCTR1146**

**Configuration**

Connector SMA Female

**Material Specifications**

Description	Material	Plating
Connector 1 Contact	Beryllium Copper	Gold
Insulation	Teflon	
Body	Stainless Steel	Passivated Stainless Steel

**Environmental Specifications**

**Temperature**

Operating Range -55 to +165 deg C  
 Humidity MIL-STD-202, Method 106  
 Thermal Shock MIL-STD-202, Method 107, Condition B  
 Salt Spray MIL-STD-202, Method 101, Condition B

**Compliance Certifications** (see [product page](#) for current document)

**Plotted and Other Data**

Notes:

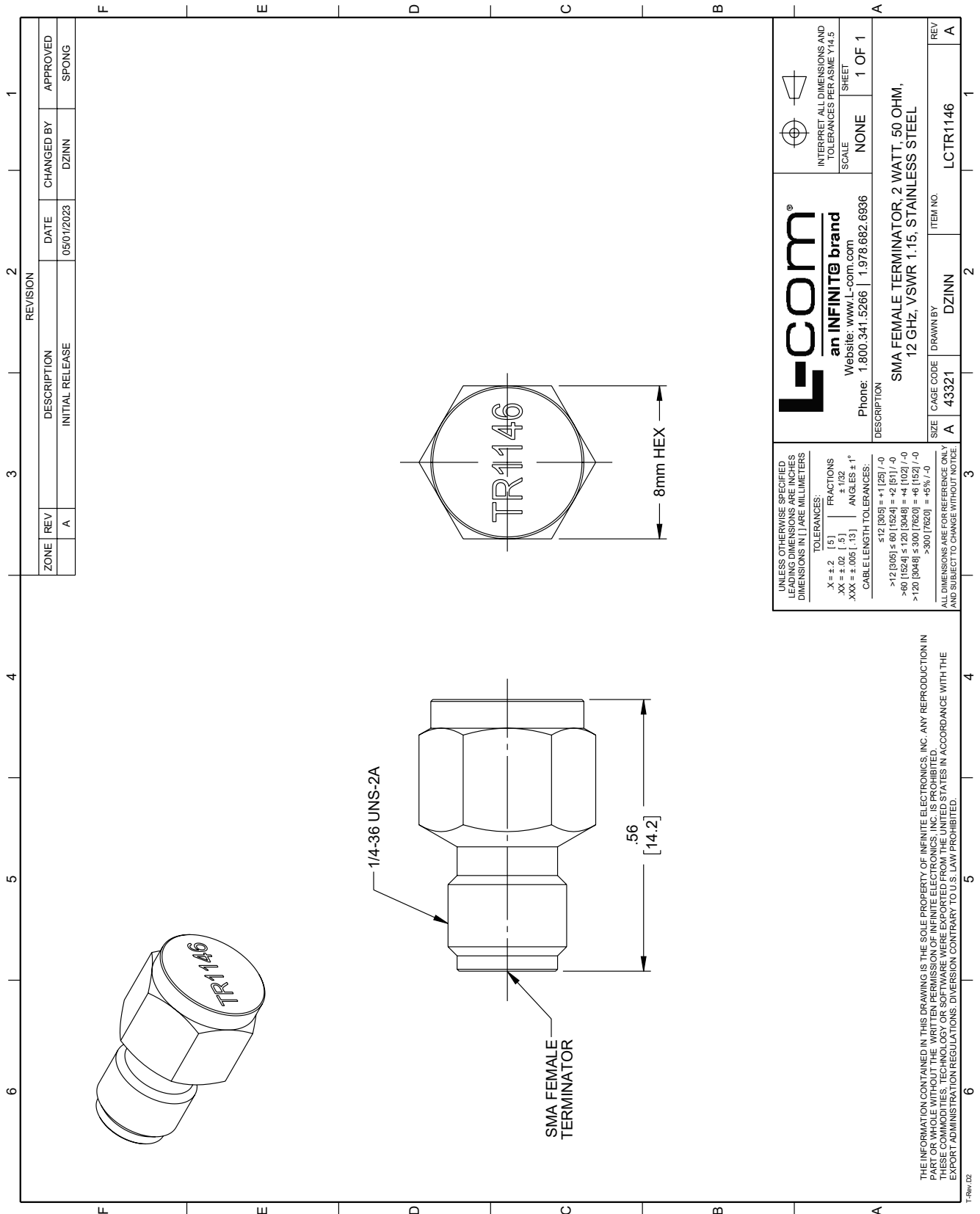
2 Watt RF Load DC to 12 GHz With SMA Female Stainless Steel Body from L-com has same day shipment for domestic and International orders. Our portfolio includes coaxial cable assemblies, connectors, adapters and custom products as well as lightning and surge protectors, NEMA rated enclosures, and an RF product line which includes antennas, amplifiers, passive, and active components. Click the following link (or enter part number in "SEARCH" on website) to obtain additional part information including price, inventory and certifications: 2 Watt RF Load DC to 12 GHz With SMA Female Stainless Steel Body LCTR1146

URL: <https://www.l-com.com/2-watt-rf-load-dc-12-ghz-sma-female-stainless-steel-body-lctr1146-p.aspx>

The information contained within this document is accurate to the best of our knowledge and representative of the part described herein. It may be necessary to make modifications to the part and/or the documentation of the part in order to implement improvements. L-com reserves the right to make such changes as required. Unless otherwise stated, all specifications are nominal. L-com does not make any representation or warranty regarding the suitability of the part described herein for any particular purpose, and L-com does not assume liability arising out of the use of any part or document. The information contained within this document is accurate to the best of our knowledge and representative of the part described herein. It may be necessary to make modifications to the part and/or the documentation of the part in order to implement improvements. L-com reserves the right to make such changes as required. Unless otherwise stated, all specifications are nominal. L-com does not make any representation or warranty regarding the suitability of the part described herein for any particular purpose, and L-com does not assume liability arising out of the use of any part or document.

# 2 Watt RF Load DC to 12 GHz With SMA Female Stainless Steel Body

## L-com CAD Drawing



ZONE		REV		DESCRIPTION		DATE		CHANGED BY		APPROVED	
	A			INITIAL RELEASE		05/01/2023		DZINN			SPONG

REVISION

UNLESS OTHERWISE SPECIFIED, LEADING DIMENSIONS ARE INCHES DIMENSIONS IN [ ] ARE MILLIMETERS

TOLERANCES:  
 X = +.2 [5] FRACTIONS  
 XX = +.02 [5] ANGLES ± 1°  
 XXX = ±.005 [13] ANGLES ± 1°

CABLE LENGTH TOLERANCES:  
 $\leq 12$  [305] = +1 [25] / -0  
 $> 12$  [305]  $\leq 60$  [1524] = +2 [51] / -0  
 $> 60$  [1524]  $\leq 120$  [3048] = +4 [102] / -0  
 $> 120$  [3048]  $\leq 300$  [7620] = +6 [152] / -0  
 $> 300$  [7620] = +5% / -0

ALL DIMENSIONS ARE FOR REFERENCE ONLY AND SUBJECT TO CHANGE WITHOUT NOTICE

**L-com**  
 an INFINITE brand  
 Website: [www.L-com.com](http://www.L-com.com)  
 Phone: 1.800.341.5266 | 1.978.682.6936

INTERPRET ALL DIMENSIONS AND TOLERANCES PER ASME Y14.5  
 SCALE NONE  
 SHEET 1 OF 1

DESCRIPTION  
 SMA FEMALE TERMINATOR, 2 WATT, 50 OHM, 12 GHz, VSWR 1.15, STAINLESS STEEL

SIZE	CAGE CODE	DRAWN BY	ITEM NO.
A	43321	DZINN	LCTR1146

REV A

THE INFORMATION CONTAINED IN THIS DRAWING IS THE SOLE PROPERTY OF INFINITE ELECTRONICS, INC. ANY REPRODUCTION IN PART OR WHOLE WITHOUT THE WRITTEN PERMISSION OF INFINITE ELECTRONICS, INC. IS PROHIBITED. THESE COMMODITIES, TECHNOLOGY OR SOFTWARE WERE EXPORTED FROM THE UNITED STATES IN ACCORDANCE WITH THE EXPORT ADMINISTRATION REGULATIONS. DIVERSION CONTRARY TO U.S. LAW PROHIBITED.

T-Rev: 02