

## 5 Watt RF Load Up to 6 GHz with NEX10 Male Aluminum Body



### LCTR1160

#### Features

- DC to 6 GHz Frequency Range
- 50 Ohm Impedance
- NEX10 Male Coaxial Interface
- Max VSWR 1.25:1
- Max Power 5 Watts (CW)

#### Applications

- 5G Cellular Bands
- SatCom
- Radar Systems
- Test and Measurement
- Commercial and Military Communication
- DAS Systems

#### Description

L-com's LCTR1160 is an RF termination (also called RF load or dummy load) that operates from DC to 6 GHz and handles up to 5 Watt (CW). Our NEX10 termination / load has a male gender. LCTR1160 NEX10 load termination offers 1.25:1 max VSWR.

RF load / terminations are indispensable components in many RF, microwave and millimeter wave systems where signal reflection from unused ports can potentially damage the device or reduce the signal integrity. By using a terminator on an unused port with a matched load (dummy load), the incident energy will be absorbed with minimal reflection. These termination components are commonly used to terminate devices such as couplers, circulators, and switches. They are also widely used in measurement systems to ensure accurate results. L-com offers a huge selection of RF, microwave and millimeter wave terminations up to 18 GHz with excellent performance over the entire operating range.

#### Electrical Specifications

Description	Minimum	Typical	Maximum	Units
Frequency Range	DC		6	GHz
Impedance		50		Ohms
VSWR, Input			1.25:1	
Input Power (CW)			5	Watts
Input Power (Peak)			50	Watts
20µs pulse, 8% duty cycle				

#### Mechanical Specifications

##### Size

Length	1.52 in [38.61 mm]
Width	0.63 in [16 mm]
Height	0.63 in [16 mm]
Weight	0.05 lbs [22.68 g]
Package Type	Connectorized

##### Configuration

Connector	NEX10 Male
-----------	------------

#### Material Specifications

Description	Material	Plating
Connector 1 Contact	Beryllium Copper	Silver

## 5 Watt RF Load Up to 6 GHz with NEX10 Male Aluminum Body



### LCTR1160

#### Material Specifications

Description	Material	Plating
Insulation	PTFE	
Connector 1 Body	Brass	Tri-Metal
Housing	Aluminum	

#### Environmental Specifications

##### Temperature

Operating Range	-40 to +75 deg C
Storage Range	-50 to +85 deg C
Humidity	<95%
Shock	IEC 60068-2-27
Vibration	IEC 60068-2-6-Fc
Altitude	<5000m
Thermal Shock	IEC 60068-2-14-Na

#### Compliance Certifications (see [product page](#) for current document)

#### Plotted and Other Data

Notes:

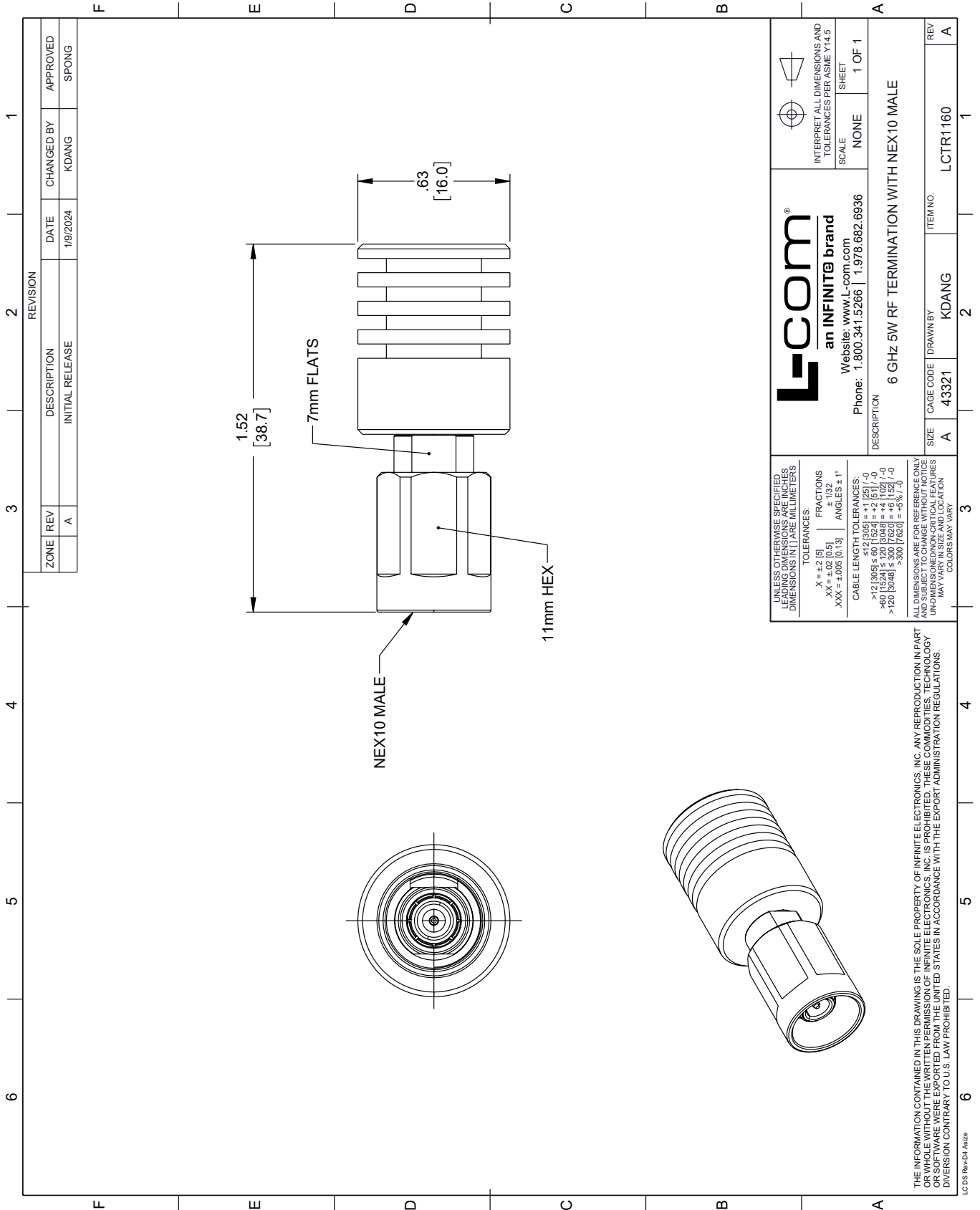
5 Watt RF Load Up to 6 GHz with NEX10 Male Aluminum Body from L-com has same day shipment for domestic and International orders. Our portfolio includes coaxial cable assemblies, connectors, adapters and custom products as well as lightning and surge protectors, NEMA rated enclosures, and an RF product line which includes antennas, amplifiers, passive, and active components.

URL: <https://www.l-com.com/5-watt-rf-load-up-6-ghz-nex10-male-aluminum-body-lctr1160-p.aspx>


The information contained within this document is accurate to the best of our knowledge and representative of the part described herein. It may be necessary to make modifications to the part and/or the documentation of the part in order to impliment improvements. L-com reserves the right to make such changes as required. Unless otherwise stated, all specifications are nominal. L-com does not make any representation or warranty regarding the suitability of the part described herein for any particular purpose, and L-com does not assume liability arising out of the use of any part or document.

# LCTR1160 CAD Drawing

5 Watt RF Load Up to 6 GHz with NEX10 Male Aluminum Body



REVISION		DATE	CHANGED BY	APPROVED	
ZONE	REV	DESCRIPTION	DATE	CHANGED BY	APPROVED
	A	INITIAL RELEASE	1/9/2024	KDANG	SPONG

 <b>an INFINITE brand</b> Website: <a href="http://www.L-com.com">www.L-com.com</a> Phone: 1.800.341.5266   1.978.682.6936		INTERPRET ALL DIMENSIONS AND TOLERANCES PER ASME Y14.5 SCALE: NONE SHEET: 1 OF 1
DESCRIPTION: 6 GHz 5W RF TERMINATION WITH NEX10 MALE		
SIZE	CAGE CODE	ITEM NO.
A	43321	KDANG
REV	A	

UNLESS OTHERWISE SPECIFIED, LEADING DIMENSIONS ARE IN INCHES. DIMENSIONS IN [ ] ARE MILLIMETERS.

TOLERANCES:

.X = ±.2 [5]  
 .XX = ±.02 [0.5]  
 .XXX = ±.005 [0.13]

FRACTIONS: ± 1/32  
 ANGLES: ± 1°

CABLE LENGTH TOLERANCES:

>12 [305] ≤ 60 [1524] = ±.125 [-0]  
 >60 [1524] ≤ 120 [3048] = ±.15 [-0]  
 >120 [3048] ≤ 300 [7620] = ±.25 [-0]  
 >300 [7620] = ±.5% [-0]

ALL DIMENSIONS ARE FOR REFERENCE ONLY. UNDIMENSIONED/NON-CRITICAL FEATURES MAY VARY IN SIZE AND LOCATION. COLORS MAY VARY.

THE INFORMATION CONTAINED IN THIS DRAWING IS THE SOLE PROPERTY OF INFINITE ELECTRONICS, INC. ANY REPRODUCTION IN PART OR WHOLE WITHOUT THE WRITTEN PERMISSION OF INFINITE ELECTRONICS, INC. IS PROHIBITED. THESE COMMODITIES, TECHNOLOGY OR SERVICES ARE NOT EXPORTED FROM THE UNITED STATES IN ACCORDANCE WITH THE EXPORT ADMINISTRATION REGULATIONS. DIVERSION CONTRARY TO U.S. LAW PROHIBITED.

LC 05 Rev-D4 Atsize