

High Temperature Dual Circuit Vertical Limit Switch,
Adjustable Roller Lever, Rated for 10A @250 VAC



LIMSW-5108HT

High Temperature Limit Switch

Features

- High temperature resistance up to 350°
- Aluminum alloy housing with high mechanical strength
- Over position alarm
- Contact detection
- Compact design

Applications

- Material handling
- OEM machine builders
- Food and beverage packaging
- Conveyor systems
- Machining
- Automotive manufacturing
- Warehouse automation.

Description

The L-com LIMSW-5108HT dual circuit vertical limit switch is electromechanical device operated by physical force via a adjustable roller lever. This high temperature limit switch can be employed in industrial automation to limit the travel of tooling or machinery as well as for object detection and part counting. Applications include material handling, OEM machine builders, food and beverage packaging, conveyor systems, machining, automotive manufacturing, and warehouse automation.

General Specifications

Type	High Temperature Limit Switch
Insulation Resistance	>100Ω Ohm(<500VDC)
IP Rating	IP65
Contact Resistance	<15Ω Ohm
Operating Frequency	30Times/Min.
Operating Speed	1mm - 2m/s
Durability (Mechanical)	>15 million cycles
Durability (Electrical)	>0.5 million cycles
Vibration	Malfunction Endurance 10-55Hz, 1.5mm (double amplitude)
Rated Current	10A/250VDC
Shock Resistance (Destruction)	>1,000m/S ² (>100G)
Shock Resistance (Malfunction)	>300m/S ² (>30G)
Withstand Voltage Statement 1	No connection between terminals: 1000VAC50/60HZ lasts 1 minute
Withstand Voltage Statement 2	Between the terminal and the contact: 2200VAC50/60Hz lasts 1 minute
Withstand Voltage Statement 3	Between terminal and no-load current metal: 2200VAC50/60Hz lasts 1 minute
Notes, Mechanical	M20x1.5 cable gland included

Environmental Specifications

Temperature

Operating Range	-40 to +350 deg C
Relative Humidity	95 %

Click the following link (or enter part number in "SEARCH" on website) to obtain additional part information including price, inventory and certifications:
[High Temperature Dual Circuit Vertical Limit Switch, Adjustable Roller Lever, Rated for 10A @250 VAC LIMSW-5108HT](#)

High Temperature Dual Circuit Vertical Limit Switch,
Adjustable Roller Lever, Rated for 10A @250 VAC

LIMSW-5108HT

High Temperature Limit Switch

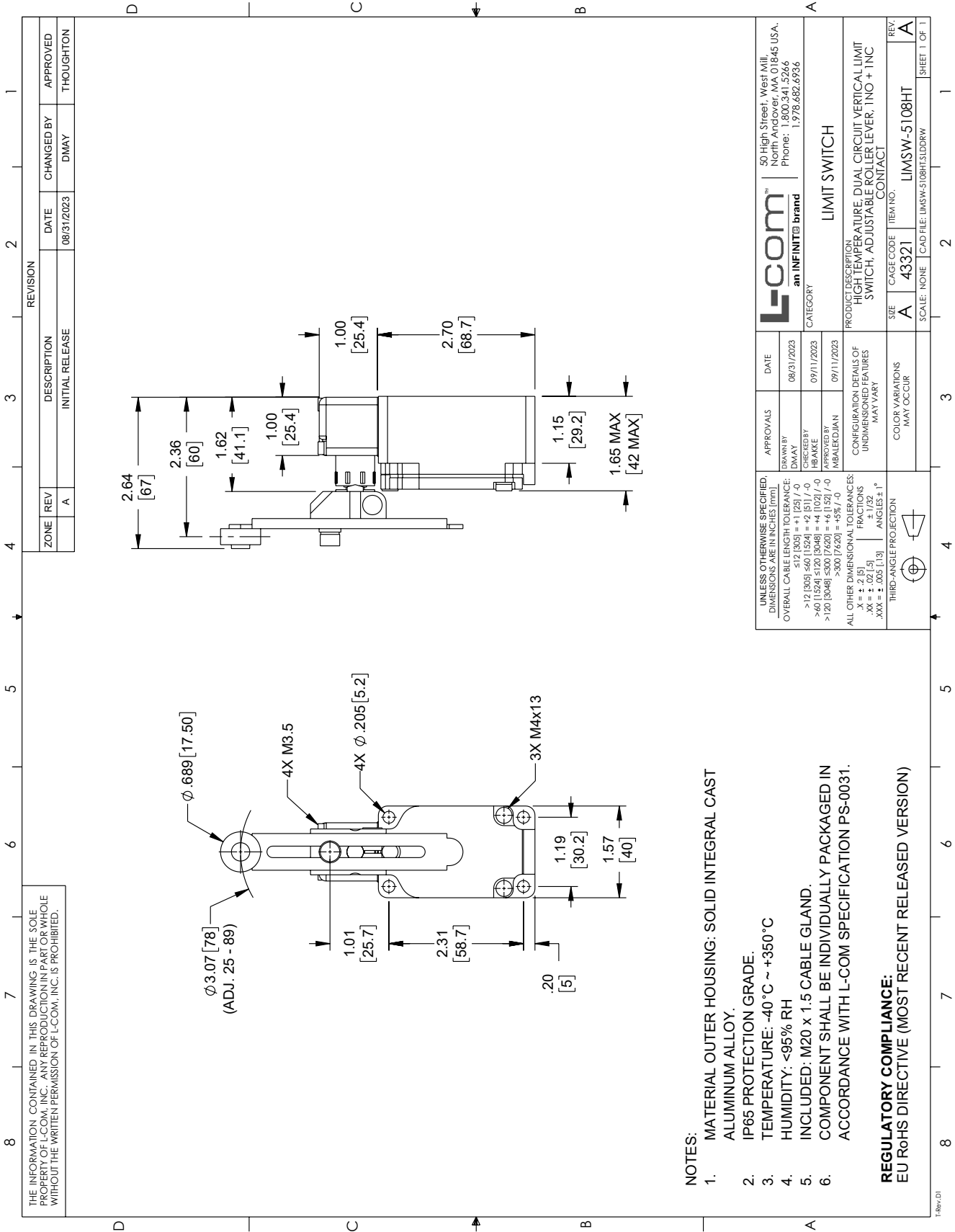


High Temperature Dual Circuit Vertical Limit Switch, Adjustable Roller Lever, Rated for 10A @250 VAC from L-com has same day shipment for domestic and International orders. Our portfolio includes coaxial cable assemblies, connectors, adapters and custom products as well as lightning and surge protectors, NEMA rated enclosures, and an RF product line which includes antennas, amplifiers, passive, and active components.

The information contained within this document is accurate to the best of our knowledge and representative of the part described herein. It may be necessary to make modifications to the part and/or the documentation of the part in order to impliment improvements. L-com reserves the right to make such changes as required. Unless otherwise stated, all specifications are nominal. L-com does not make any representation or warranty regarding the suitability of the part described herein for any particular purpose, and L-com does not assume liability arising out of the use of any part or document.

High Temperature Dual Circuit Vertical Limit Switch, Adjustable Roller Lever, Rated for 10A @250 VAC

L-com CAD Drawing



THE INFORMATION CONTAINED IN THIS DRAWING IS THE SOLE PROPERTY OF L-COM, INC.. ANY REPRODUCTION IN PART OR WHOLE WITHOUT THE WRITTEN PERMISSION OF L-COM, INC. IS PROHIBITED.

NOTES:

1. MATERIAL OUTER HOUSING: SOLID INTEGRAL CAST ALUMINUM ALLOY.
2. IP65 PROTECTION GRADE.
3. TEMPERATURE: -40 °C ~ +350 °C
4. HUMIDITY: <95% RH
5. INCLUDED: M20 x 1.5 CABLE GLAND.
6. COMPONENT SHALL BE INDIVIDUALLY PACKAGED IN ACCORDANCE WITH L-COM SPECIFICATION PS-0031.

REGULATORY COMPLIANCE:
EU RoHS DIRECTIVE (MOST RECENT RELEASED VERSION)

ZONE	REV	DESCRIPTION	DATE	CHANGED BY	APPROVED
A		INITIAL RELEASE	08/31/2023	DMAY	THOUGHTON

		50 High Street, West Mill, North Andover, MA 01845 USA, Phone: 1.800.341.5266 1.978.682.6936	
an INFINITE brand		LIMIT SWITCH	
APPROVALS DRAWN BY: DMAY CHECKED BY: HIRAKKE DESIGNED BY: ABALERJIAN	DATE 08/31/2023 09/11/2023 09/11/2023	CATEGORY LIMIT SWITCH	
PRODUCT DESCRIPTION: HIGH TEMPERATURE DUAL CIRCUIT VERTICAL LIMIT SWITCH, ADJUSTABLE ROLLER LEVER, 1NO + 1NC			
UNLESS OTHERWISE SPECIFIED DIMENSIONS ARE IN INCHES (mm): OVERALL CABLE LENGTH TOLERANCE: ≤12 [305] = +1 [25] / -0 >12 [305] ≤60 [1524] = +2 [51] / -0 >60 [1524] ≤120 [3048] = +4 [102] / -0 >120 [3048] ≤300 [7620] = +6 [152] / -0 >300 [7620] = +5% / -0		CONFIGURATION DETAILS OF UNDIMENSIONED FEATURES MAY VARY	
ALL OTHER DIMENSIONAL TOLERANCES: FRACTIONS XX = ±.005 [0.127] XXX = ±.005 [0.127] ANGLES ±1°		COLOR VARIATIONS MAY OCCUR	
THIRD-ANGLE PROJECTION		SIZE A	ITEM NO. LIMS5W-5108HT
SCALE: NONE		CAD FILE: LIMS5W-5108HT.SLDRAW	SHEET 1 OF 1