

Capacitive liquid level sensor 500mm range, stainless steel sensing rod, 4-20mA, G1/2, direct lead, 0.5m cable



LLCAP201-3001

Features

- Corrosion resistant stainless steel
- Highly accurate continuous measurement
- Long term Stable performance
- 4-20 mA output
- G1/2 process connection

Applications

- Petroleum Industry
- Pharmaceutical Industry
- Chemical Production
- Food and Beverage
- Continuous level monitoring

Description

The LLCAP201-3001 capacitive liquid level sensor is tailored for the precise measurement of liquid levels in storage tanks and other containment vessels used in industrial automation and process control. Examples include gasoline, various hydraulic oils, alcohol and other non-conductive liquids.

General Specifications

Application:	Level Sensing
Sensor Type:	Capacitive
Electrical Connection:	Direct Lead
Process Connection:	G1/2
Connection Type:	0.5 meter 2 wire cable
Output Signal:	4-20 mA
Media Compatibility:	Petrochemicals and other non-conductive liquids
Blind Zone:	5mm from the bottom of rod

Specifications Table

Description	Min	Typ	Max	Units
Thermal Sensitivity Shift	<u>0.05</u>			
Sensing Distance			<u>500</u>	<u>mm</u>
Accuracy		<u>0.5</u>		<u>% Full Scale</u>

Capacitive liquid level sensor 500mm range, stainless steel sensing rod, 4-20mA, G1/2, direct lead, 0.5m cable



LLCAP201-3001

Specifications Table

Description	Min	Typ	Max	Units
Long-Term Stability			0.1	% Full Scale/year

Electrical Specifications

Description	Min	Typ	Max	Units
DC Power Supply Voltage	9		30	VDC

Material Specifications

Description	Material
Cable Material	PVC
Housing Material	Stainless steel
Rod Material	Stainless steel

Compliance Certifications (see [product page](#) for current document)

Environmental Specifications

Temperature (Operating)	-40 deg C to 85 deg C
Temperature (Storage)	-40 deg C to 125 deg C
Temperature (Probe Resistance)	-40 deg C to 85 deg C
Temperature (Zero Drift)	0.05 %FS/°C
Impact	100 g
Vibration	20 g
Ingress Protection	IP65

Capacitive liquid level sensor 500mm range, stainless steel sensing rod, 4-20mA, G1/2, direct lead, 0.5m cable



LLCAP201-3001

Notes and warranty information

1. During installation or removal, be sure to apply the correct size wrench to the hexagonal area only.
2. Avoid pulling the cable hard to avoid damage to the internal structure of the product.
3. Apply power within the specific range and follow the wiring diagram to ensure proper operation.
4. After long-term use, and depending on the measured medium, the drainage hole may become blocked. This can adversely affect the sensor function (output sensitivity) and cleaning may be required. Apply a cleaning fluid designed to dissolve organic matter and repeat as needed. Do not probe the drainage hole as doing so may damage the internal lining and impact the function of the sensor.
5. This product is warranted against defects in materials and workmanship for a period of one year from the purchase date.

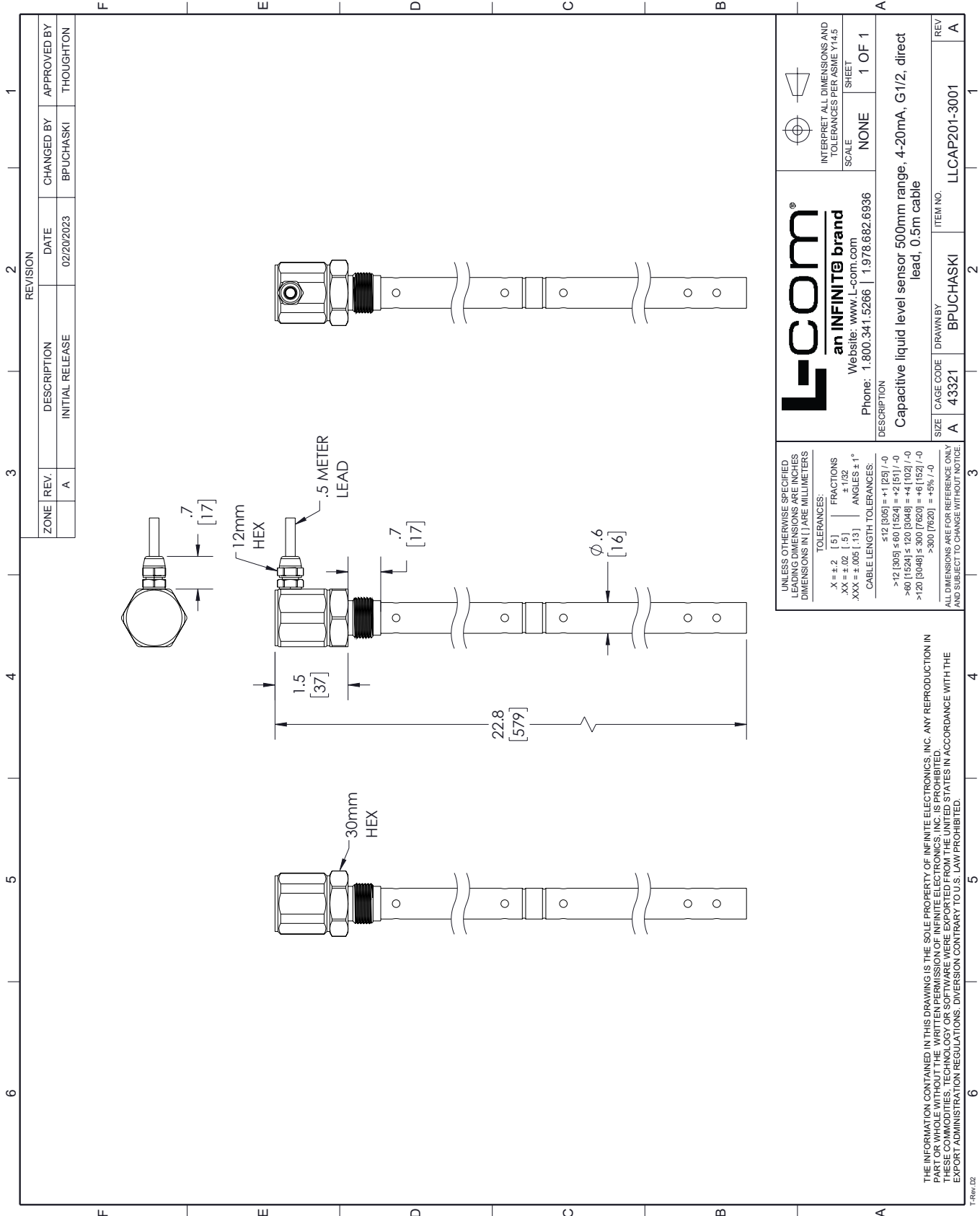
Capacitive liquid level sensor 500mm range, stainless steel sensing rod, 4-20mA, G1/2, direct lead, 0.5m cable from L-com has same day shipment for domestic and International orders. Our portfolio includes coaxial cable assemblies, connectors, adapters and custom products as well as lightning and surge protectors, NEMA rated enclosures, and an RF product line which includes antennas, amplifiers, passive, and active components.

URL: <https://www.l-com.com/capacitive-liquid-level-sensor-500mm-range-stainless-steel-sensing-rod-4-20ma-g1-2-direct-lead-0.5m-cable-llcap201-3001-p.aspx>

The information contained within this document is accurate to the best of our knowledge and representative of the part described herein. It may be necessary to make modifications to the part and/or the documentation of the part in order to implement improvements. L-com reserves the right to make such changes as required. Unless otherwise stated, all specifications are nominal. L-com does not make any representation or warranty regarding the suitability of the part described herein for any particular purpose, and L-com does not assume liability arising out of the use of any part or document.

LLCAP201-3001 CAD Drawing

Capacitive liquid level sensor 500mm range, stainless steel sensing rod, 4-20mA, G1/2, direct lead, 0.5m cable



ZONE		REVISION		CHANGED BY		APPROVED BY	
	REV. A	DESCRIPTION	DATE	BPUCHASKI	THOUGHTON	INITIAL RELEASE	02/20/2023

<p>L-com an INFINITE brand Website: www.L-com.com Phone: 1.800.341.5266 1.978.682.6936</p>		<p>INTERPRET ALL DIMENSIONS AND TOLERANCES PER ASME Y14.5 SCALE: NONE SHEET: 1 OF 1</p>	
<p>UNLESS OTHERWISE SPECIFIED LEADING DIMENSIONS ARE INCHES DIMENSIONS IN [] ARE MILLIMETERS</p> <p>TOLERANCES: X = ±.2 [5] FRACTIONS XX = ±.02 [5] ± 1/32 XXX = ±.005 [13] ANGLES ±1°</p> <p>CABLE LENGTH TOLERANCES: ≤12 [305] = +1 [25] / -0 >12 [305] ≤60 [1524] = +2 [51] / -0 >60 [1524] ≤120 [3048] = +4 [102] / -0 >120 [3048] ≤300 [7620] = +6 [152] / -0 >300 [7620] = +8 [203] / -0</p> <p>ALL DIMENSIONS ARE FOR REFERENCE ONLY AND SUBJECT TO CHANGE WITHOUT NOTICE</p>		<p>DESCRIPTION Capacitive liquid level sensor 500mm range, 4-20mA, G1/2, direct lead, 0.5m cable</p>	
SIZE	A	CAGE CODE	43321
DRAWN BY	BPUCHASKI	ITEM NO.	LLCAP201-3001
REV.	A		

THE INFORMATION CONTAINED IN THIS DRAWING IS THE SOLE PROPERTY OF INFINITE ELECTRONICS, INC. ANY REPRODUCTION IN PART OR WHOLE WITHOUT THE WRITTEN PERMISSION OF INFINITE ELECTRONICS, INC. IS PROHIBITED. THESE COMMODITIES, TECHNOLOGY OR SOFTWARE WERE EXPORTED FROM THE UNITED STATES IN ACCORDANCE WITH THE EXPORT ADMINISTRATION REGULATIONS. DIVERSION CONTRARY TO U.S. LAW PROHIBITED.