

Ultrasonic level sensor with external gauge, 10 m range, 4-20 mA, G2, direct lead, 3 m cable



LLUSCS02-5302 Liquid Level Sensors

Features

- External LCD display
- High reliability
- Rugged industrial grade housing
- G2 process connection
- 4-20 mA output

Applications

- Petroleum Industry
- Water and sewage treatment
- Chemical Production
- Food and beverage
- Non-contact level monitoring

Description

The LLUSCS02-5302 Ultrasonic level sensor with external gauge is a non-contact, highly reliable level measuring instrument. It is easy to install and maintain, and provides continuous level measurement without touching the medium. It is well suited for monitoring fluids of varying viscosity as well as granular solid materials, such as bulk dry goods.

General Specifications

Application:	Level Sensing
Sensor Type:	Ultrasonic external gauge
Electrical Connection:	Direct Lead
Process Connection:	G2
Connection Type:	3 meter 4 wire cable
Output Signal:	4-20 mA
Resolution:	3mm or 0.1% (whichever is larger)

Description	Minimum	Typical	Maximum	Unit
Sensing Distance			10,000	mm
Resolution Ratio			5	mm
Accuracy		0.5		% Full Scale

Electrical Specifications

Description	Minimum	Typical	Maximum	Unit
DC Power Supply Voltage		24		VDC
Power Supply Current		100		mA
Power Supply Voltage			±5	%
Pressure Resistance			3	bar

Click the following link (or enter part number in "SEARCH" on website) to obtain additional part information including price, inventory and certifications:
[Ultrasonic level sensor with external gauge, 10 m range, 4-20 mA, G2, direct lead, 3 m cable LLUSCS02-5302](#)

Ultrasonic level sensor with external gauge, 10 m range, 4-20 mA, G2, direct lead, 3 m cable

LLUSCS02-5302
Liquid Level Sensors



Power Consumption	≤2.5	W
-------------------	------	---

Material Specifications

Description	Material
Cable Material	PVC
Housing Material	Polycarbonate

Notes: Resistant to weak acids and alkali; Display: IP65

Environmental Specifications

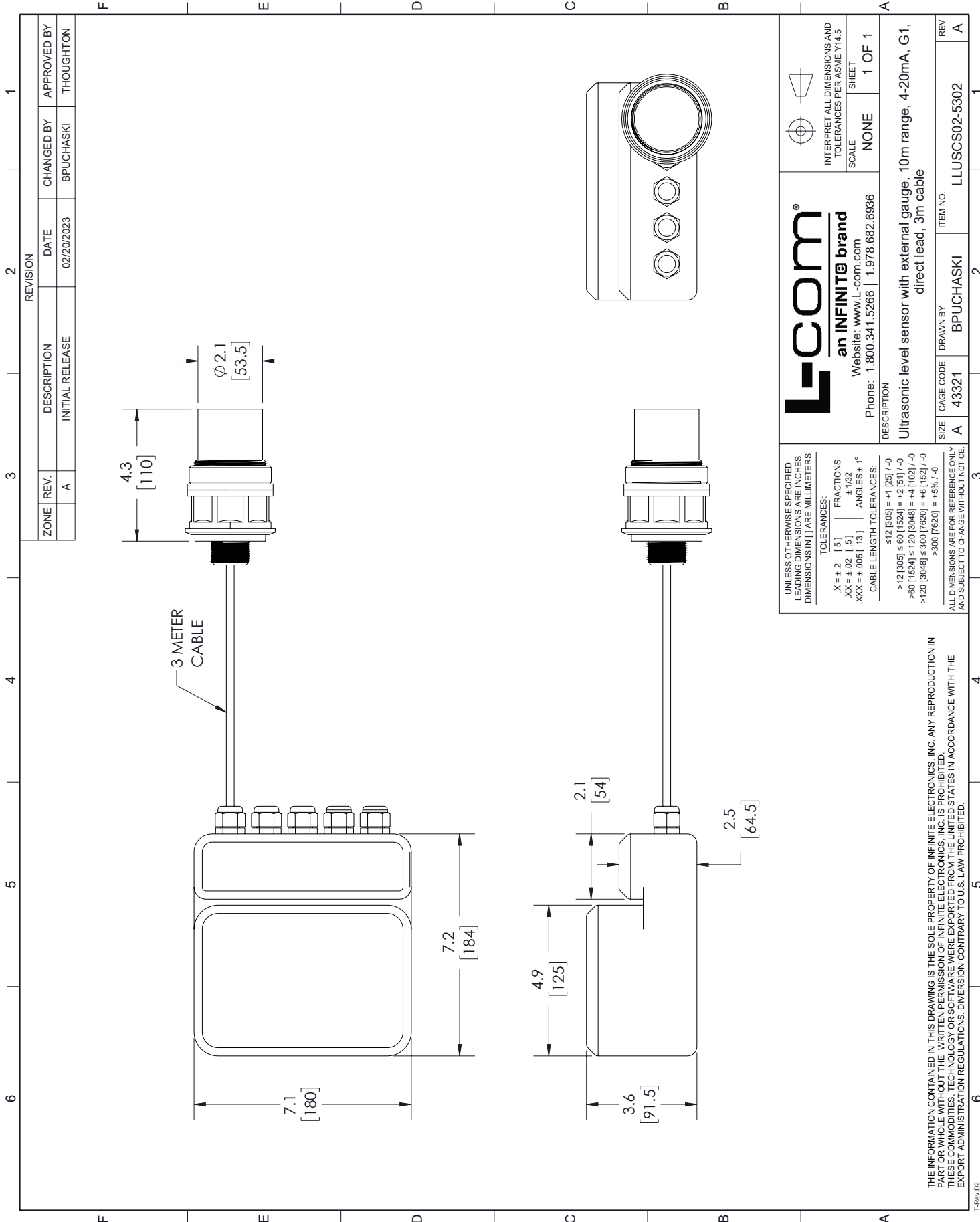
Temperature (Operating)	-20 deg C to 60 deg C
Temperature (Probe Resistance)	-20 deg C to 80 deg C
Ingress Protection	IP68

The Infinite Electronics portfolio includes coaxial cable assemblies, connectors, adapters and custom products, as well as our wireless product line which includes antennas, RF amplifiers, lightning and surge protectors, and NEMA rated enclosures.

The information contained in this document is accurate to the best of our knowledge and representative of the part described herein. It may be necessary to make modifications to the part and/or the documentation of the part, in order to implement improvements. L-com reserves the right to make such changes as required. Unless otherwise stated, all specifications are nominal. L-com does not make any representation or warranty regarding the suitability of the part described herein for any particular purpose, and L-com does not assume any liability arising out of the use of any part or documentation.

LLUSCS02-5302 CAD Drawing

Ultrasonic level sensor with external gauge, 10 m range,
4-20 mA, G2, direct lead, 3 m cable



L-com
an INFINITE brand
Website: www.L-com.com
Phone: 1.800.341.5266 | 1.978.682.6936

INTERPRET ALL DIMENSIONS AND TOLERANCES PER ASME Y14.5
SCALE NONE SHEET 1 OF 1

DESCRIPTION
Ultrasonic level sensor with external gauge, 10m range, 4-20mA, G1, direct lead, 3m cable

UNLESS OTHERWISE SPECIFIED LEADING DIMENSIONS ARE INCHES DIMENSIONS IN [] ARE MILLIMETERS
TOLERANCES:
X = ±.2 [5] FRACTIONS ±.02 [0.5] ANGLES ± 1°
.XXX = ±.005 [0.13] CABLE LENGTH TOLERANCES:
≤12 [305] = +1 [25] / -0
>12 [305] ≤ 60 [1524] = +2 [51] / -0
>60 [1524] ≤ 120 [3048] = +4 [102] / -0
>120 [3048] ≤ 300 [7620] = +6 [152] / -0
>300 [7620] = +5% / -0

ALL DIMENSIONS ARE FOR REFERENCE ONLY AND SUBJECT TO CHANGE WITHOUT NOTICE.

SIZE	CAGE CODE	DRAWN BY	ITEM NO.	REV
A	43321	BPUCHASKI	LLUSCS02-5302	A

THE INFORMATION CONTAINED IN THIS DRAWING IS THE SOLE PROPERTY OF INFINITE ELECTRONICS, INC. ANY REPRODUCTION IN PART OR WHOLE WITHOUT THE WRITTEN PERMISSION OF INFINITE ELECTRONICS, INC. IS PROHIBITED. THESE COMMODITIES, TECHNOLOGY OR SOFTWARE WERE EXPORTED FROM THE UNITED STATES IN ACCORDANCE WITH THE EXPORT ADMINISTRATION REGULATIONS. DIVERSION CONTRARY TO U.S. LAW PROHIBITED.