

Low power submersible liquid level transmitter,
3 m range, RS485, direct lead, 5 m cable

LTSUB7002-3202

Liquid Level Sensors

Features

- Suitable for low power applications
- Excellent shock and vibration resistance
- High precision and long term stable performance
- Corrosion resistant stainless steel housing
- RS-485 output

Applications

- Petroleum Industry
- Water and Sewage Treatment
- Chemical Production
- Food and Beverage
- Hydrostatic level monitoring

Description

The LTSUB7002-3202 Submersible liquid level transmitter is specifically designed for monitoring hydrostatic pressure. This pressure is then converted to a signal that corresponds to the height of the liquid above it. Being a compact device allows it to be used in applications where space is limited. It is easy to install and provides accurate, reliable measurements regardless of the shape or size of the tanks used in industrial processes and other industrial automation applications where liquid level monitoring is needed.

General Specifications

Application:	Level Sensing
Sensor Type:	Submersible
Electrical Connection:	Direct Lead
Connection Type:	5 meter 4 wire cable
Output Signal:	RS-485
Interface Protocol:	MODBUS-RTU
Media Compatibility:	Water/Gasoline/Other fluids

Description	Minimum	Typical	Maximum	Unit
Sensing Distance			3,000	mm
Accuracy		0.5		% Full Scale
Overpressure		200		xFull Scale
Long-Term Stability			0.2	% Full Scale/year

Electrical Specifications

Description	Minimum	Typical	Maximum	Unit
DC Power Supply Voltage	3		4.2	VDC
Power Supply Current			2.5	mA

Click the following link (or enter part number in "SEARCH" on website) to obtain additional part information including price, inventory and certifications:
[Low power submersible liquid level transmitter, 3 m range, RS485, direct lead, 5 m cable LTSUB7002-3202](#)

Low power submersible liquid level transmitter,
3 m range, RS485, direct lead, 5 m cable

LTSUB7002-3202 Liquid Level Sensors

Stand-by Current	0.2	mA
------------------	-----	----

Material Specifications

Description	Material
Cable Material	PVC
Housing Material	Stainless steel

Environmental Specifications

Temperature (Operating)	-10 deg C to 85 deg C
Temperature (Storage)	-20 deg C to 100 deg C
Temperature (Compensated)	-10 deg C to 70 deg C
Ingress Protection	IP68

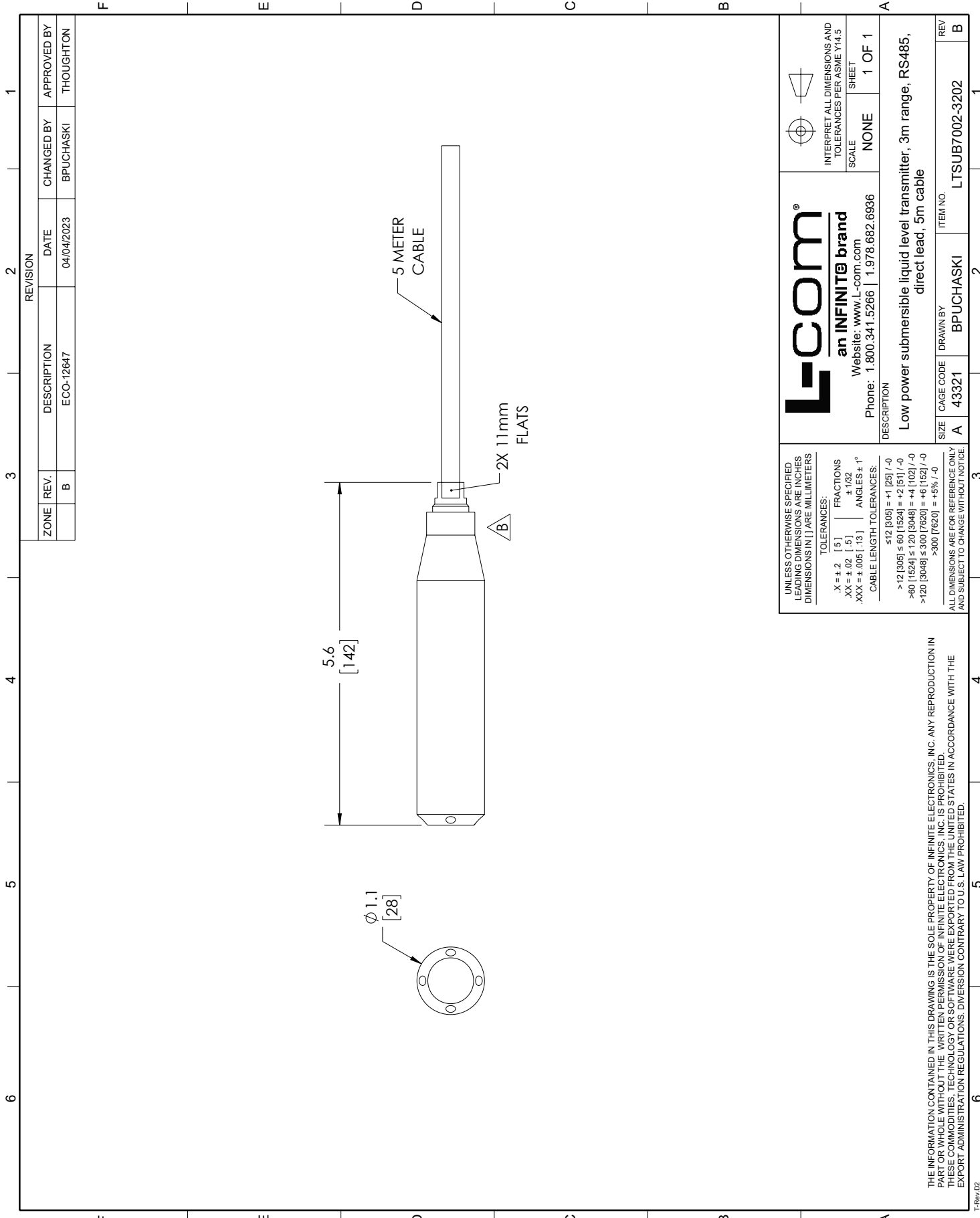
Notes: Media cannot be frozen

The Infinite Electronics portfolio includes coaxial cable assemblies, connectors, adapters and custom products, as well as our wireless product line which includes antennas, RF amplifiers, lightning and surge protectors, and NEMA rated enclosures.

The information contained in this document is accurate to the best of our knowledge and representative of the part described herein. It may be necessary to make modifications to the part and/or the documentation of the part, in order to implement improvements. L-com reserves the right to make such changes as required. Unless otherwise stated, all specifications are nominal. L-com does not make any representation or warranty regarding the suitability of the part described herein for any particular purpose, and L-com does not assume any liability arising out of the use of any part or documentation.


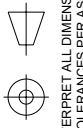
LTSUB7002-3202 CAD Drawing

Low power submersible liquid level transmitter, 3 m range, RS485, direct lead, 5 m cable



ZONE	REV.	DESCRIPTION	DATE	CHANGED BY	APPROVED BY
	B	ECO-12647	04/04/2023	BPUCHASKI	THOUGHTON

REVISION	

 <p>an INFINITIB® brand Website: www.L-com.com Phone: 1.800.341.5266 1.978.682.6936</p>		 <p>INTERPRET ALL DIMENSIONS AND TOLERANCES PER ASME Y14.5 SCALE NONE SHEET 1 OF 1</p>
<p>DESCRIPTION Low power submersible liquid level transmitter, 3m range, RS485, direct lead, 5m cable</p>		
SIZE A	CAGE CODE 43321	ITEM NO. LTSUB7002-3202
DRAWN BY BPUCHASKI		REV B

UNLESS OTHERWISE SPECIFIED LEADING DIMENSIONS ARE INCHES DIMENSIONS IN [] ARE MILLIMETERS

TOLERANCES:
 X = ± 0.2 [5] FRACTIONS ± 1/32
 .XX = ± 0.02 [.5] ANGLES ± 1°
 .XXX = ± 0.005 [.13]
 CABLE LENGTH TOLERANCES:
 ≤ 12 [305] = +1 [25] / -0
 > 12 [305] ≤ 60 [1524] = +2 [51] / -0
 > 60 [1524] ≤ 120 [3048] = +4 [102] / -0
 > 120 [3048] ≤ 300 [7620] = +6 [152] / -0
 > 300 [7620] = +5% / -0

ALL DIMENSIONS ARE FOR REFERENCE ONLY AND SUBJECT TO CHANGE WITHOUT NOTICE.

THE INFORMATION CONTAINED IN THIS DRAWING IS THE SOLE PROPERTY OF INFINITE ELECTRONICS, INC. ANY REPRODUCTION IN PART OR WHOLE WITHOUT THE WRITTEN PERMISSION OF INFINITE ELECTRONICS, INC. IS PROHIBITED. THESE COMMODITIES, TECHNOLOGY OR SOFTWARE WERE EXPORTED FROM THE UNITED STATES IN ACCORDANCE WITH THE EXPORT ADMINISTRATION REGULATIONS. DIVERSION CONTRARY TO U.S. LAW PROHIBITED.