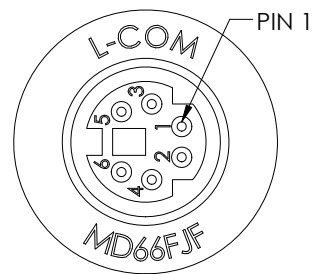
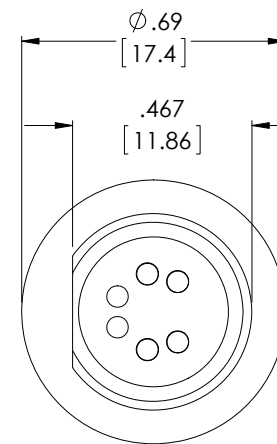
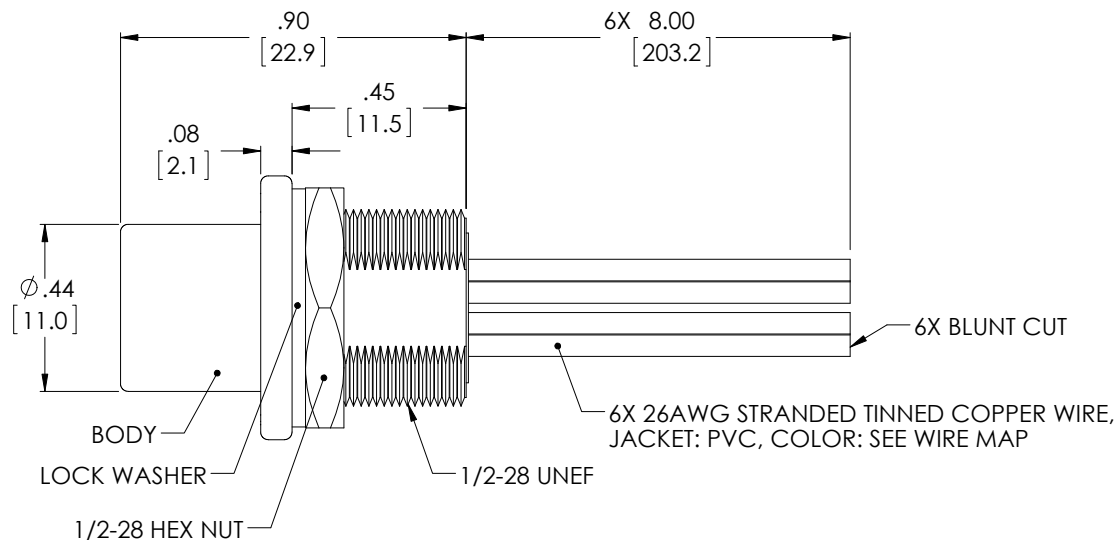


THE INFORMATION CONTAINED IN THIS DRAWING IS THE SOLE PROPERTY OF L-COM, INC. ANY REPRODUCTION IN PART OR WHOLE WITHOUT THE WRITTEN PERMISSION OF L-COM, INC. IS PROHIBITED.

REVISIONS			
REV	DESCRIPTION	DATE	APPROVED
A	DRAWING REPLACES MD66FJF-OD1	6/24/14	D. DESJARDIN



6 POSITION
MINIATURE CIRCULAR DIN



NUT AND WASHER
REMOVED FOR CLARITY.

WIRE MAP	
PIN NUMBER	WIRE COLOR
PIN 1	BLACK
PIN 2	WHITE
PIN 3	RED
PIN 4	GREEN
PIN 5	BROWN
PIN 6	BLUE

NOTES:

1. FINISH OF EXTERNAL METAL PARTS NICKEL PLATED.
2. REAR OF HOUSING IS POTTED.
MATERIAL: SILICONE RESIN CONFORMAL COATING. COLOR; BLACK
3. CABLE ASSEMBLY SHALL BE TESTED FOR CONTINUITY.
4. CABLE ASSEMBLY SHALL BE INDIVIDUALLY PACKAGED IN ACCORDANCE WITH L-COM SPECIFICATION PS-0031.

REGULATORY COMPLIANCE:
CE2011/65/EU(RoHS DIRECTIVE)

UNLESS OTHERWISE SPECIFIED, DIMENSIONS ARE IN INCHES [mm] OVERALL CABLE LENGTH TOLERANCE: ≤12 [305] = +1 [25] / -0 >12 [305] ≤60 [1524] = +2 [51] / -0 >60 [1524] ≤120 [3048] = +4 [102] / -0 >120 [3048] ≤300 [7620] = +6 [152] / -0 >300 [7620] = +5% / -0%	APPROVALS	DATE		45 BEECHWOOD DRIVE NORTH ANDOVER, MA 01845
	DRAWN BY R. CARRICK	12/28/99		
ALL OTHER DIMENSIONAL TOLERANCES: .X = ±.2 [5.08] .XX = ±.02 [51] .XXX = ±.005 [13]	CHECKED BY AFC	12/28/99	CATEGORY	
	APPROVED BY AFC	12/28/99	I/O PRODUCTS	
PROJECTION 	CONFIGURATION DETAILS OF UNDIMENSIONED FEATURES MAY VARY		PRODUCT DESCRIPTION	
COLOR VARIATIONS MAY OCCUR	SIZE A	FSCM NO. 43321	DWG. NO. MD66FJF	REV. A
MD66FJF-OD1	SCALE: NONE	CAD FILE: MD66FJF.SLDRW	SHEET 1 OF 1	