



# 14x12x06 Polycarbonate Weatherproof Outdoor IP24 NEMA 3R Enclosure, Modified Base DIN Rail Mount Vented Lid Dark Gray

## NEMA Enclosures Technical Data Sheet

**NBPC141206-00VDR**

### Features

- High-Impact, UV Resistant Polycarbonate (Dark Gray)
- Stainless steel latches with padlock eye
- NEMA Type 3R / IP24 rated
- Fully gasketed vented lid & user installed wall mounting brackets
- Installed mounting rails for use with DIN3 rails

### Applications

- Remote Wireless LAN WiFi equipment installations
- Indoor and outdoor installations
- Rapid Deployment Installations
- Corrosive environments & hotspot applications
- Protection of equipment from theft or damage

### Description

The box is a rugged weatherproof enclosure that is ideal for both indoor and outdoor applications. Constructed from High-Impact, UV Resistant Polycarbonate material that provides superior durability to impacts and ease of modification while maintaining minimum weight. It is well suited for high temperature or corrosive environments. The lid includes two vents with installed rain guards and filters. The included wall mount brackets come uninstalled and bagged with their hardware inside of the enclosure. Once the brackets are installed the enclosure can be mounted directly to any flat wall surface provided proper screws are used into secure studs. The brackets, once installed, also allow you to use our HGX-PMT pole mount kits. The lid features a non-metallic hinge system that allows for quick removal & can be reattached just as quickly without the need for any tools. The enclosure comes with a pair of stainless-steel latches with padlock eyes allowing you to secure the enclosure from tampering. The enclosure comes in a Dark Gray (Pantone 422C)

### Mounting Rails

The aluminum mounting rails installed within the NBPC141206-00VDR provides provisions to mount DIN3 Rails for installing a number of off-the-shelf DIN Modules and systems. The flexibility of DIN rail mounting system and the large selection of modules available offer any number of application solutions indoors and out, even in rainy environments. The NEMA Type 3R/IP24 provides a vented, weatherproof environment, to safely house the control, routing and power systems being designed with the DIN Modules. The DIN Rails can be adapted to hold other systems and components to accommodate their placement in the enclosure. The enclosure features holes for two N-Bulkhead connectors or Lightning Protectors, a grounding lug, and a cable conduit connector to accept power or system feeds into the enclosure.

The HGX-PMT series of pole mounting kits allow the populated enclosure to be securely mounted to a variety of different size poles.

Compatible versions include HGX-PMT13, HGX-PMT16, HGX-PMT28, HGX-PMT29, HGX-PMT30, & HGX-PMT33

### Size

Outer Height	14.6 in	[370.84 mm]
Outer Width	12.6 in	[320.04 mm]
Outer Depth	7.4 in	[187.96 mm]
Inner Height	13.7 in	[347.98 mm]
Inner Width	11.7 in	[297.18 mm]
Inner Depth	5.9 in	[149.86 mm]
Weight	8.4 lbs	[3.81 kg]
Enclosure Material	Polycarbonate	

### Environmental Specifications

Temperature Rating	-40° to 265° F [-40° to 129° C]
NEMA Rating	3R
Ingress Protection (IP) Rating	IP24

Click the following link (or enter part number in "SEARCH" on website) to obtain additional part information including price, inventory and certifications: [14x12x06 Polycarbonate Weatherproof Outdoor IP24 NEMA 3R Enclosure, Modified Base DIN Rail Mount Vented Lid Dark Gray NBPC141206-00VDR](#)



an INFINIT<sup>e</sup> brand

14x12x06 Polycarbonate Weatherproof Outdoor IP24 NEMA 3R Enclosure, Modified Base DIN Rail Mount Vented Lid Dark Gray



## NEMA Enclosures Technical Data Sheet

**NBPC141206-00VDR**

### Compliance Certifications

UL Listed

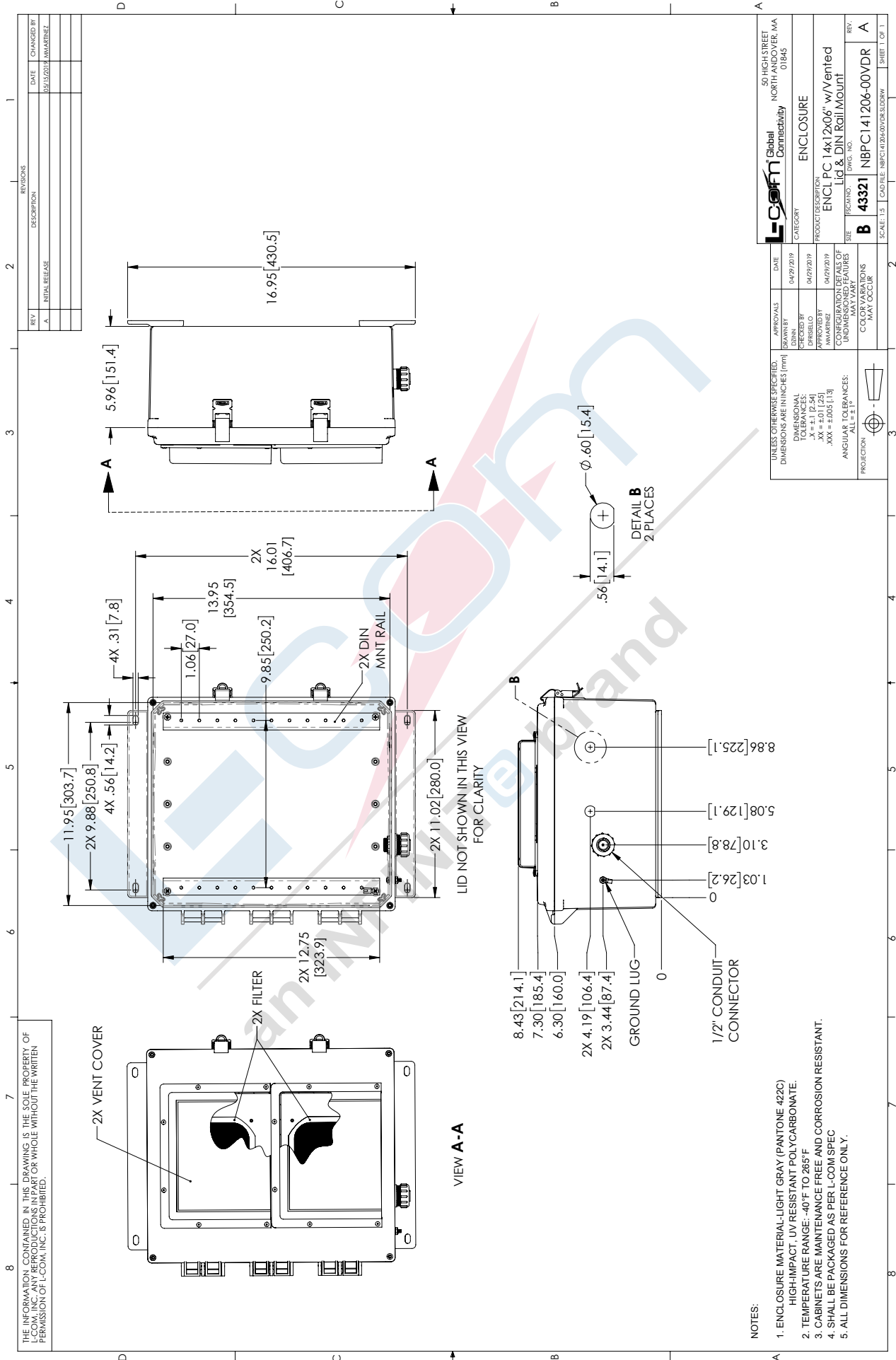
No

Click the following link (or enter part number in "SEARCH" on website) to obtain additional part information including price, inventory and certifications: [14x12x06 Polycarbonate Weatherproof Outdoor IP24 NEMA 3R Enclosure, Modified Base DIN Rail Mount Vented Lid Dark Gray NBPC141206-00VDR](https://www.l-com.com/nema-enclosures-14x12x06-polycarbonate-weatherproof-nema-3r-enclosuremodified-base-din-rail-mount-vented-dark-gray-nbpc141206-00vdr)

URL: <https://www.l-com.com/nema-enclosures-14x12x06-polycarbonate-weatherproof-nema-3r-enclosuremodified-base-din-rail-mount-vented-dark-gray-p.aspx>

# NBPC141206-00VDR CAD Drawing

14x12x06 Polycarbonate Weatherproof Outdoor IP24 NEMA 3R  
Enclosure, Modified Base DIN Rail Mount Vented Lid Dark Gray



THE INFORMATION CONTAINED IN THIS DRAWING IS THE SOLE PROPERTY OF L-COM, INC. NO PART OF THIS DRAWING IS TO BE REPRODUCED OR TRANSMITTED IN ANY FORM OR BY ANY MEANS, ELECTRONIC OR MECHANICAL, WITHOUT THE WRITTEN PERMISSION OF L-COM, INC. IS PROHIBITED.

REV.	INITIAL RELEASE	DESCRIPTION	DATE	CHANGES BY
A			05/15/2019	MMARINEZ

		50 HIGH STREET NORTH ANDOVER, MA 01845	
APPROVALS	DATE	APPROVED BY	DATE
DRAWN BY	04/29/2019	APPROVED BY	04/29/2019
DESIGNED BY	04/29/2019	APPROVED BY	04/29/2019
APPROVED BY	04/29/2019	APPROVED BY	04/29/2019
MMARINEZ		MMARINEZ	
UNLESS OTHERWISE SPECIFIED, DIMENSIONS ARE IN INCHES (MM)			
DIMENSIONAL TOLERANCES:			
.XX = ±0.01 [0.25]			
.XXX = ±0.005 [0.13]			
ANGULAR TOLERANCES: ALL = ±1°			
CONFIGURATIONS OF ALL OF UNDESIGNATED FEATURES MAY VARY			
COLOR VARIATIONS MAY OCCUR			
PROJECT DESCRIPTION	ENCLOSURE		
ENCLOSURE	ENCLOSURE		
PRODUCT DESCRIPTION	ENCL PC 14x12x06" w/Vented Lid & DIN Rail Mount		
REV.	REV.	REV.	REV.
B	43321	NBPC141206-00VDR	A
SCALE: 1:1	CAD FILE: NBPC141206-00VDR.DWG	SHEET 1 OF 1	

- NOTES:
- ENCLOSURE MATERIAL-LIGHT GRAY (PANTONE 422C) HIGH-IMPACT, UV RESISTANT POLYCARBONATE.
  - TEMPERATURE RANGE: -40°F TO 265°F
  - CABINETS ARE MAINTENANCE FREE AND CORROSION RESISTANT.
  - SHALL BE PACKAGED AS PER L-COM SPEC
  - ALL DIMENSIONS FOR REFERENCE ONLY.