



14x12x06 Polycarbonate Weatherproof Outdoor IP66 NEMA 4X Enclosure, 120VAC Mount Plate Dark Gray

NEMA Enclosures Technical Data Sheet

NBPC141206-100

Features

- High-Impact, UV Resistant Polycarbonate (Dark Gray)
- Stainless steel latches with padlock eye
- NEMA Type 4X / IP66* rated (includes (4x) optional lid corner screws**)
- Fully gasketed lid & user installed wall mounting brackets
- Features aluminum mounting plate with surge protected duplex 120 VAC outlets

Applications

- Remote Wireless LAN WiFi equipment installations
- Indoor and outdoor installations
- Rapid Deployment Installations
- Corrosive environments & hotspot applications
- Protection of equipment from theft or damage

Description

The box is a rugged weatherproof enclosure that is ideal for both indoor and outdoor applications. Constructed from High-Impact, UV Resistant Polycarbonate material that provides superior durability to impacts and ease of modification while maintaining minimum weight. It is well suited for high temperature or corrosive environments. The included wall mount brackets come uninstalled and bagged with their hardware inside of the enclosure. Once the brackets are installed the enclosure can be mounted directly to any flat wall surface provided proper screws are used into secure studs. The brackets, once installed, also allow you to use our HGX-PMT pole mount kits. The lid features a non-metallic hinge system that allows for quick removal & can be reattached just as quickly without the need for any tools. The enclosure comes with a pair of stainless-steel latches with padlock eyes allowing you to secure the enclosure from tampering. The enclosure comes in a Dark Gray (Pantone 422C)

Mounting Plate

The aluminum mounting plate features standard surge protected duplex 120 VAC outlets and a terminal block for easy hook up to the externally provided line power. In addition, the unit can accept up to two optional bulkhead-mount N-Type lightning protectors to protect the coaxial cable runs.

The HGX-PMT series of pole mounting kits allow the populated enclosure to be securely mounted to a variety of different size poles.

Compatible versions include HGX-PMT13, HGX-PMT16, HGX-PMT28, HGX-PMT29, HGX-PMT30, & HGX-PMT33

*Note: Enclosure ports (Cable conduit connector and N-type holes for lightning protectors or connectors) must be properly sealed to maintain NEMA Type 4X / IP66 rating

**Note: If all four of the optional lid screws are installed the enclosure can achieve. NEMA 6P / IP68 however all of the openings would have to be properly sealed with an IP68 rated plug, gland or coupler.

Size

Outer Height	14.6 in	[370.84 mm]
Outer Width	12.6 in	[320.04 mm]
Outer Depth	7.4 in	[187.96 mm]
Inner Height	13.7 in	[347.98 mm]
Inner Width	11.7 in	[297.18 mm]
Inner Depth	5.9 in	[149.86 mm]
Weight	8.6 lbs	[3.9 kg]
Enclosure Material	Polycarbonate	

Environmental Specifications

Temperature Rating	-40° to 265° F [-40° to 129° C]
NEMA Rating	4X

Click the following link (or enter part number in "SEARCH" on website) to obtain additional part information including price, inventory and certifications: [14x12x06 Polycarbonate Weatherproof Outdoor IP66 NEMA 4X Enclosure, 120VAC Mount Plate Dark Gray NBPC141206-100](#)



an INFINIT^e brand

14x12x06 Polycarbonate Weatherproof Outdoor IP66 NEMA
4X Enclosure, 120VAC Mount Plate Dark Gray



NEMA Enclosures Technical Data Sheet

NBPC141206-100

Ingress Protection (IP) Rating

IP66

Compliance Certifications

UL Listed

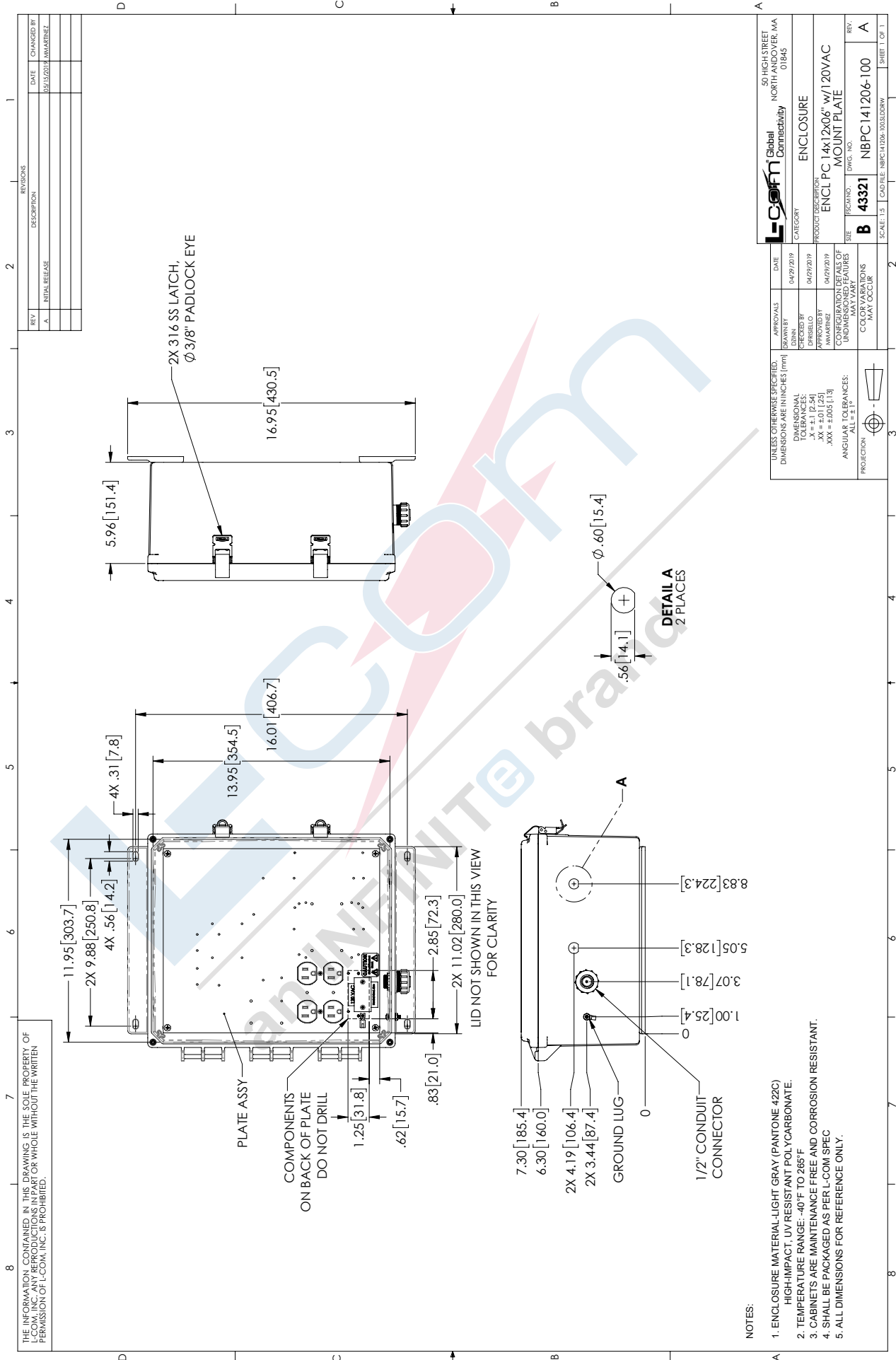
No

Click the following link (or enter part number in "SEARCH" on website) to obtain additional part information including price, inventory and certifications: [14x12x06 Polycarbonate Weatherproof Outdoor IP66 NEMA 4X Enclosure, 120VAC Mount Plate Dark Gray NBPC141206-100](https://www.l-com.com/nema-enclosures-14x12x06-polycarbonate-weatherproof-nema-4x-enclosure-120vac-mount-plate-dark-gray-nbpc141206-100)

URL: <https://www.l-com.com/nema-enclosures-14x12x06-polycarbonate-weatherproof-nema-4x-enclosure-120vac-mount-plate-dark-gray-p.aspx>

NBPC141206-100 CAD Drawing

14x12x06 Polycarbonate Weatherproof Outdoor IP66 NEMA 4X Enclosure, 120VAC Mount Plate Dark Gray



THE INFORMATION CONTAINED IN THIS DRAWING IS THE SOLE PROPERTY OF L-COM, INC. ANY REPRODUCTION OR TRANSMISSION IN ANY FORM OR BY ANY MEANS, WITHOUT THE WRITTEN PERMISSION OF L-COM, INC. IS PROHIBITED.

REV.	DESCRIPTION	DATE	CHANGES BY
A	INITIAL RELEASE	05/15/2019	JMMARTINEZ

APPROVALS	DATE	50 HIGH STREET NORTH ANDOVER, MA 01845
DRAWN BY: JMMARTINEZ	04/29/2019	L-com Global Connectivity
APPROVED BY: JMMARTINEZ	04/29/2019	
UNLESS OTHERWISE SPECIFIED, DIMENSIONS ARE IN INCHES (mm)		ENCLOSURE
DIMENSIONAL TOLERANCES: .XX = ±0.1 (25)		
ANGULAR TOLERANCES: ALL = ±1°		PRODUCT DESCRIPTION: ENCL PC 14x12x06" w/120VAC MOUNT PLATE
PROJECTION: FIRST ANGLE		SIZE: SECTION: DWG. NO.
COLOR VARIATIONS MAY OCCUR		B 43321 NBPC141206-100
SCALE: 1:1		SHEET 1 OF 1

- NOTES:
- ENCLOSURE MATERIAL-LIGHT GRAY (PANTONE 422C) HIGH-IMPACT, UV RESISTANT POLYCARBONATE.
 - TEMPERATURE RANGE: -40°F TO 265°F
 - CABINETS ARE MAINTENANCE FREE AND CORROSION RESISTANT.
 - SHALL BE PACKAGED AS PER L-COM SPEC
 - ALL DIMENSIONS FOR REFERENCE ONLY.