



an INFINIT® brand



14x12x06 Polycarbonate Weatherproof Outdoor IP24 NEMA 3R Enclosure, 120VAC Mount Plate Vented Lid Dark Gray

NEMA Enclosures Technical Data Sheet

NBPC141206-10V

Features

- High-Impact, UV Resistant Polycarbonate (Dark Gray)
- Stainless steel latches with padlock eye
- NEMA Type 3R / IP24 rated
- Fully gasketed vented lid with filters & user installed wall mounting brackets
- Features aluminum mounting plate with surge protected duplex 120 VAC outlets

Applications

- Remote Wireless LAN WiFi equipment installations
- Indoor and outdoor installations
- Rapid Deployment Installations
- Corrosive environments & hotspot applications
- Protection of equipment from theft or damage

Description

The box is a rugged weatherproof enclosure that is ideal for both indoor and outdoor applications. Constructed from High-Impact, UV Resistant Polycarbonate material that provides superior durability to impacts and ease of modification while maintaining minimum weight. It is well suited for high temperature or corrosive environments. The lid includes two vents with installed rain guards and filters. The included wall mount brackets come uninstalled and bagged with their hardware inside of the enclosure. Once the brackets are installed the enclosure can be mounted directly to any flat wall surface provided proper screws are used into secure studs. The brackets, once installed, also allow you to use our HGX-PMT pole mount kits. The lid features a non-metallic hinge system that allows for quick removal & can be reattached just as quickly without the need for any tools. The enclosure comes with a pair of stainless-steel latches with padlock eyes allowing you to secure the enclosure from tampering. The enclosure comes in a Dark Gray (Pantone 422C)

Mounting Plate

The aluminum mounting plate included with the NBPC141206-10V features standard surge protected duplex 120 VAC outlets and a terminal block for easy hook up to the externally provided line power. The enclosure also features holes for two N-Bulkhead Lightning Protectors or Connectors, a grounding lug and cable conduit connector.

The HGX-PMT series of pole mounting kits allow the populated enclosure to be securely mounted to a variety of different size poles.

Compatible versions include HGX-PMT13, HGX-PMT16, HGX-PMT28, HGX-PMT29, HGX-PMT30, & HGX-PMT33

Size

Outer Height	14.6 in	[370.84 mm]
Outer Width	12.6 in	[320.04 mm]
Outer Depth	7.4 in	[187.96 mm]
Inner Height	13.7 in	[347.98 mm]
Inner Width	11.7 in	[297.18 mm]
Inner Depth	5.9 in	[149.86 mm]
Weight	10.3 lbs	[4.67 kg]
Enclosure Material	Polycarbonate	

Environmental Specifications

Temperature Rating	-40° to 265° F [-40° to 129° C]
NEMA Rating	3R
Ingress Protection (IP) Rating	IP24

Click the following link (or enter part number in "SEARCH" on website) to obtain additional part information including price, inventory and certifications: [14x12x06 Polycarbonate Weatherproof Outdoor IP24 NEMA 3R Enclosure, 120VAC Mount Plate Vented Lid Dark Gray NBPC141206-10V](#)



an INFINIT^e brand

14x12x06 Polycarbonate Weatherproof Outdoor IP24 NEMA
3R Enclosure, 120VAC Mount Plate Vented Lid Dark Gray



NEMA Enclosures Technical Data Sheet

NBPC141206-10V

Compliance Certifications

UL Listed

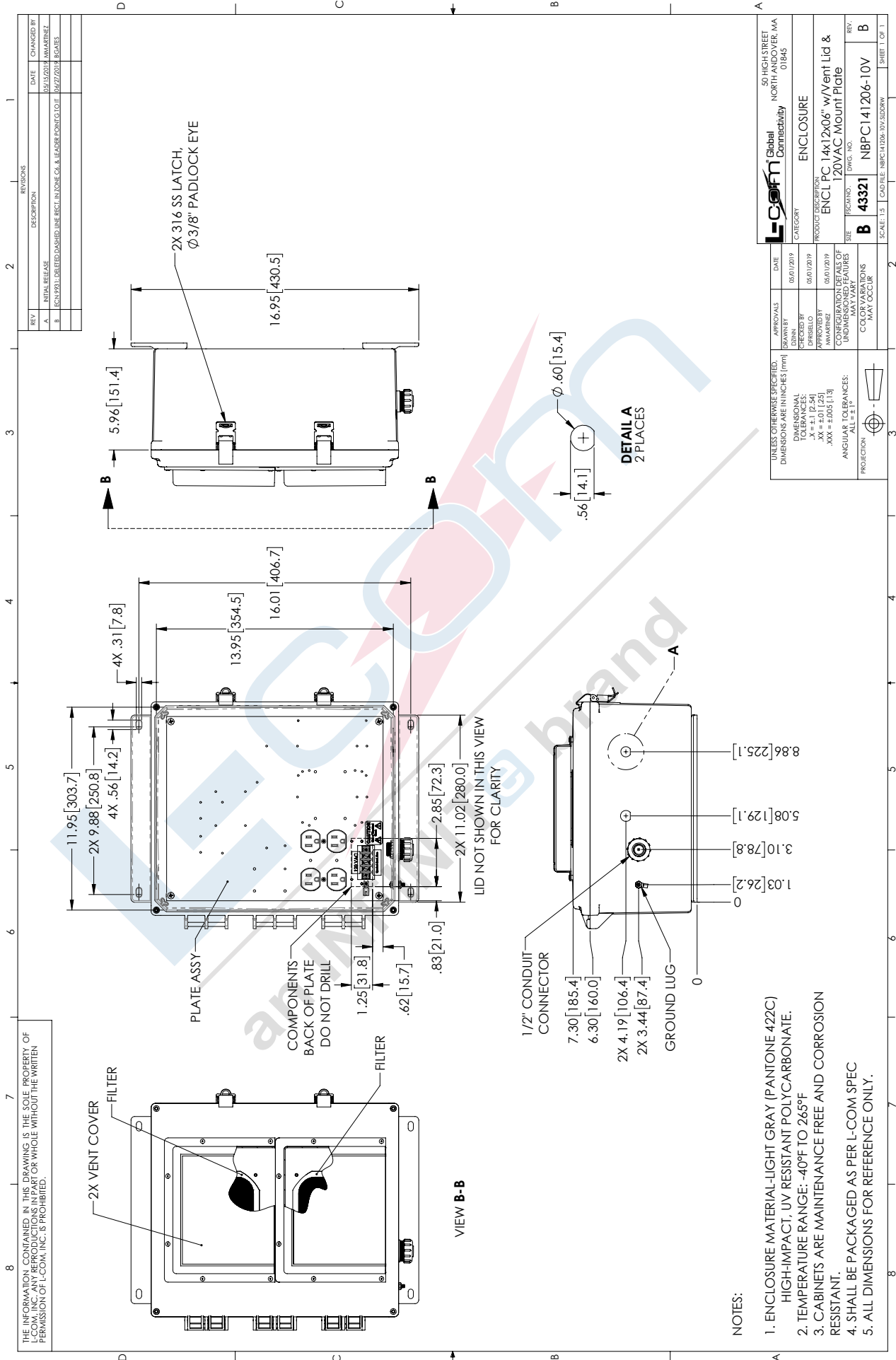
No

Click the following link (or enter part number in "SEARCH" on website) to obtain additional part information including price, inventory and certifications: [14x12x06 Polycarbonate Weatherproof Outdoor IP24 NEMA 3R Enclosure, 120VAC Mount Plate Vented Lid Dark Gray NBPC141206-10V](https://www.l-com.com/nema-enclosures-14x12x06-polycarbonate-weatherproof-nema-3r-enclosure-120vac-mount-plate-vented-lid-dark-gray-nbpc141206-10v)

URL: <https://www.l-com.com/nema-enclosures-14x12x06-polycarbonate-weatherproof-nema-3r-enclosure-120vac-mount-plate-vented-lid-dark-gray-p.aspx>

NBPC141206-10V CAD Drawing

14x12x06 Polycarbonate Weatherproof Outdoor IP24 NEMA 3R Enclosure, 120VAC Mount Plate Vented Lid Dark Gray



REV	DESCRIPTION	DATE	CHANGES BY
A	INITIAL RELEASE	05/15/2019	JMMARTINEZ
B	ECOY2011 UNLATCHED DASHED LINE RECT. IN JUNCTION CO. & LEADERS POINTING OUT	05/22/2019	RCATTS

		50 HIGH STREET NORTH ANDOVER, MA 01845	
APPROVALS DRAWN BY: [Signature] CHECKED BY: [Signature] APPROVED BY: [Signature]		DATE: 05/01/2019 05/01/2019	
DIMENSIONAL TOLERANCES: .XX = ±0.1 [25] .XXX = ±0.005 [13] ANGULAR TOLERANCES: ALL = ±1°		CATEGORY: ENCLOSURE PRODUCT DESCRIPTION: ENCL PC 14x12x06" w/Vent Lid & 120VAC Mount Plate	
UNLESS OTHERWISE SPECIFIED, DIMENSIONS ARE IN INCHES (MM)		SIZE: B 43321 DWG. NO: NBPC141206-10V	
CONFIGURATIONS OF ALL OF UNDESIGNATED FEATURES MAY VARY		SCALE: 1:1 SHEET 15 OF 15	

- NOTES:**
- ENCLOSURE MATERIAL-LIGHT GRAY (PANTONE 422C) HIGH-IMPACT, UV RESISTANT POLYCARBONATE.
 - TEMPERATURE RANGE: -40°F TO 265°F
 - CABINETS ARE MAINTENANCE FREE AND CORROSION RESISTANT.
 - SHALL BE PACKAGED AS PER L-COM SPEC
 - ALL DIMENSIONS FOR REFERENCE ONLY.