



18x16x10 Polycarbonate Weatherproof Outdoor IP66 NEMA 4X Enclosure, DIN Rail Mount Dark Gray

NEMA Enclosures Technical Data Sheet

NBPC181610-000DR

Features

- High-Impact, UV Resistant Polycarbonate (Dark Gray)
- Stainless steel latches with padlock eye
- NEMA Type 4X / IP66* rated (includes (4x) optional lid corner screws**)
- Fully gasketed lid & user installed wall mounting brackets
- Includes Mounting Rails for DIN3 Rails and DIN modules in the Enclosure

Applications

- Remote Wireless LAN WiFi equipment installations
- Indoor and outdoor installations
- Rapid Deployment Installations
- Corrosive environments & hotspot applications
- Protection of equipment from theft or damage

Description

The box is a rugged weatherproof enclosure that is ideal for both indoor and outdoor applications. Constructed from High-Impact, UV Resistant Polycarbonate material that provides superior durability to impacts and ease of modification while maintaining minimum weight. It is well suited for high temperature or corrosive environments. The included wall mount brackets come uninstalled and bagged with their hardware inside of the enclosure. Once the brackets are installed the enclosure can be mounted directly to any flat wall surface provided proper screws are used into secure studs. The brackets, once installed, also allow you to use our HGX-PMT pole mount kits. The lid features a non-metallic hinge system that allows for quick removal & can be reattached just as quickly without the need for any tools. The enclosure comes with a pair of stainless-steel latches with padlock eyes allowing you to secure the enclosure from tampering. The enclosure comes in a Dark Gray (Pantone 422C)

Mounting Rails

The aluminum mounting rails installed within the NBPC181610-000DR provides provisions to mount DIN3 Rails for installing a number of off-the-shelf DIN Modules and systems. The HGX-PMT13 Mounting Package allows the populated enclosure to be mounted on poles, securely, in and around your site. The flexibility of DIN rail mounting system and the large selection of modules available offer any number of application solutions indoors and out, even in harsh environments. The NEMA 4X/IP66 provides a sealed environment to safely house the control, routing and power systems being designed with the DIN Modules. The DIN Rails can be adapted to hold other systems and components to accommodate their placement in the enclosure. The enclosure features holes for two N-Bulkhead lightning protectors or connectors, a grounding lug, and a cable conduit connector to accept power or system feeds into the enclosure.

The HGX-PMT series of pole mounting kits allow the populated enclosure to be securely mounted to a variety of different size poles.

Compatible versions include HGX-PMT13, HGX-PMT16, HGX-PMT28, HGX-PMT29, HGX-PMT30 & HGX-PMT33

*Note: Enclosure ports (Cable conduit connector and N-type holes for lightning protectors or connectors) must be properly sealed to maintain NEMA Type 4X / IP66 rating

**Note: If all four of the optional lid screws are installed the enclosure can achieve. NEMA 6P / IP68 however all of the openings would have to be properly sealed with an IP68 rated plug, gland or coupler.

Size

Outer Height	18.9 in	[480.06 mm]
Outer Width	16.8 in	[426.72 mm]
Outer Depth	11.3 in	[287.02 mm]
Inner Height	18.2 in	[462.28 mm]
Inner Width	16.2 in	[411.48 mm]
Inner Depth	9.7 in	[246.38 mm]
Weight	17.2 lbs	[7.8 kg]

Click the following link (or enter part number in "SEARCH" on website) to obtain additional part information including price, inventory and certifications: [18x16x10 Polycarbonate Weatherproof Outdoor IP66 NEMA 4X Enclosure, DIN Rail Mount Dark Gray NBPC181610-000DR](#)



an INFINIT^e brand



18x16x10 Polycarbonate Weatherproof Outdoor
IP66 NEMA 4X Enclosure, DIN Rail Mount Dark Gray

NEMA Enclosures Technical Data Sheet

NBPC181610-000DR

Enclosure Material

Polycarbonate

Environmental Specifications

Temperature Rating

-40° to 265° F [-40° to 129° C]

NEMA Rating

4X

Ingress Protection (IP) Rating

IP66

Compliance Certifications

UL Listed

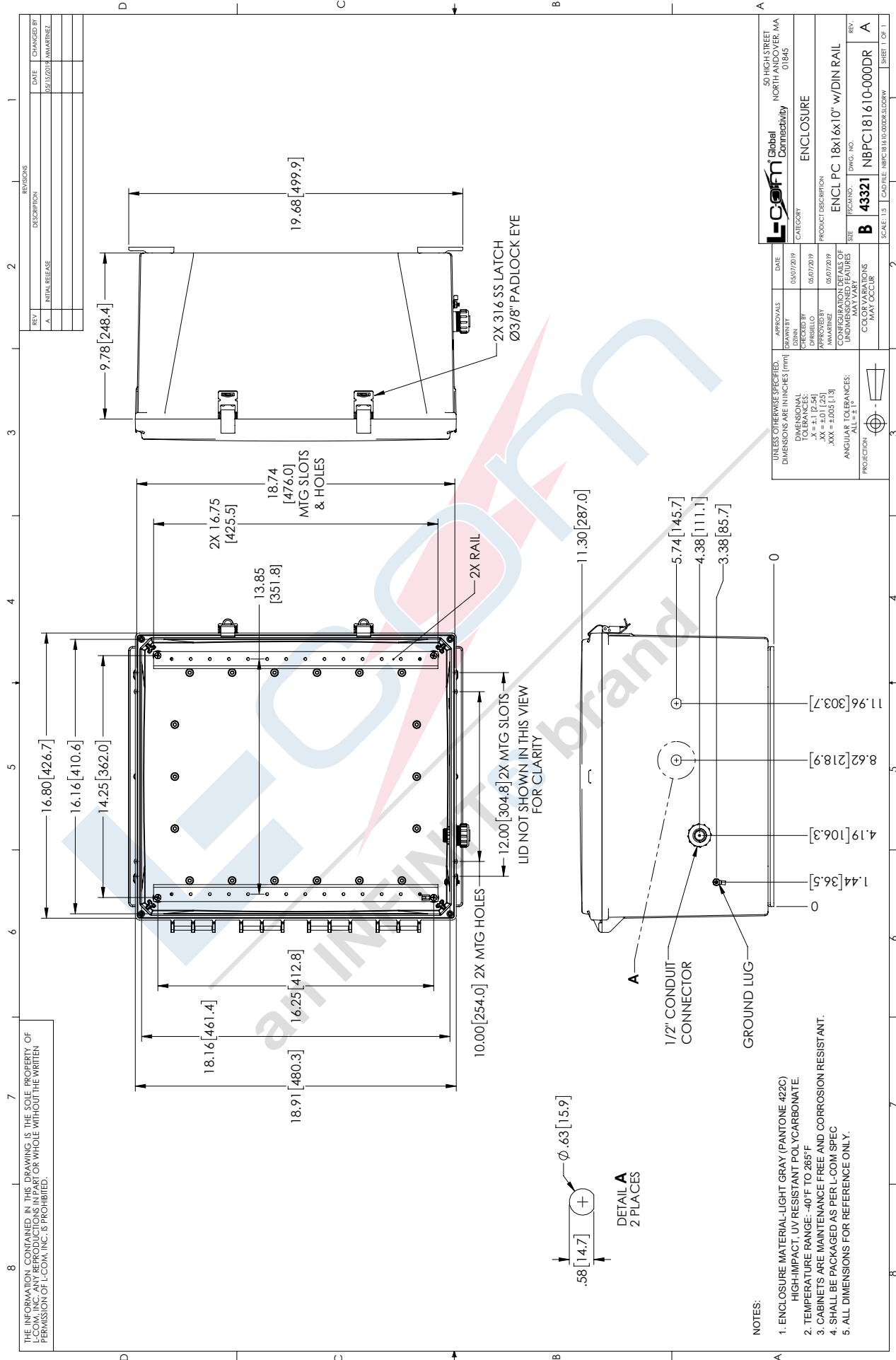
No

Click the following link (or enter part number in "SEARCH" on website) to obtain additional part information including price, inventory and certifications: [18x16x10 Polycarbonate Weatherproof Outdoor IP66 NEMA 4X Enclosure, DIN Rail Mount Dark Gray NBPC181610-000DR](#)

URL: <https://www.l-com.com/nema-enclosures-18x16x10-polycarbonate-weatherproof-nema-4x-enclosure-din-rail-mount-dark-gray-p.aspx>

NBPC181610-000DR CAD Drawing

18x16x10 Polycarbonate Weatherproof Outdoor IP66 NEMA 4X Enclosure, DIN Rail Mount Dark Gray



THE INFORMATION CONTAINED IN THIS DRAWING IS THE SOLE PROPERTY OF L-COM, INC. ANY REPRODUCTIONS IN PART OR WHOLE WITHOUT THE WRITTEN PERMISSION OF L-COM, INC. IS PROHIBITED.

REV.	DESCRIPTION	DATE	CHANGED BY
A.	INITIAL RELEASE	05/15/2019	AWAMRINEZ

APPROVALS	DATE
DRAWN BY	05/07/2019
CHECKED BY	05/07/2019
APPROVED BY	05/07/2019
AWAMRINEZ	05/07/2019
CONFIGURATION DETAILS OF UNDIMENSIONED FEATURES MAY VARY	
COLOR VARIATIONS	MAY OCCUR

UNLESS OTHERWISE SPECIFIED, DIMENSIONS ARE IN INCHES (mm)

DIMENSIONAL TOLERANCES:
 .XX = ±0.1 (.25)
 .XXX = ±0.05 (.13)
 ANGULAR TOLERANCES: ALL = ±1°

PROJECTION:

L-com Global Connectivity	50 HIGH STREET NORTH ANDOVER, MA 01845
CATEGORY	ENCLOSURE
PRODUCT DESCRIPTION	ENCL PC 18x16x10" w/DIN RAIL
SIZE	ENCLOSURE
DWG. NO.	B 43321
REV.	A

SCALE: 1:1 CAD FILE: NBPC181610-000DR.SLDDRW SHEET 1 OF 1

- NOTES:
- ENCLOSURE MATERIAL-LIGHT GRAY (PANTONE 422C) HIGH-IMPACT, UV RESISTANT POLYCARBONATE.
 - TEMPERATURE RANGE: -40°F TO 265°F
 - CABINETS ARE MAINTENANCE FREE AND CORROSION RESISTANT.
 - SHALL BE PACKAGED AS PER L-COM SPEC
 - ALL DIMENSIONS FOR REFERENCE ONLY.