



18x16x10 Polycarbonate Weatherproof Outdoor IP24 NEMA 3R Enclosure, Modified Base DIN Rail Mount Vented Lid Dark Gray

NEMA Enclosures Technical Data Sheet

NBPC181610-00VDR

Features

- High-Impact, UV Resistant Polycarbonate (Dark Gray)
- Stainless steel latches with padlock eye
- NEMA Type 3R / IP24 rated
- Fully gasketed vented lid & user installed wall mounting brackets
- Includes mounting rails for DIN3 and DIN modules in the enclosure

Applications

- Remote Wireless LAN WiFi equipment installations
- Indoor and outdoor installations
- Rapid Deployment Installations
- Corrosive environments & hotspot applications
- Protection of equipment from theft or damage

Description

The box is a rugged weatherproof enclosure that is ideal for both indoor and outdoor applications. Constructed from High-Impact, UV Resistant Polycarbonate material that provides superior durability to impacts and ease of modification while maintaining minimum weight. It is well suited for high temperature or corrosive environments. The lid includes two vents with installed rain guards and filters. The included wall mount brackets come uninstalled and bagged with their hardware inside of the enclosure. Once the brackets are installed the enclosure can be mounted directly to any flat wall surface provided proper screws are used into secure studs. The brackets, once installed, also allow you to use our HGX-PMT pole mount kits. The lid features a non-metallic hinge system that allows for quick removal & can be reattached just as quickly without the need for any tools. The enclosure comes with a pair of stainless-steel latches with padlock eyes allowing you to secure the enclosure from tampering. The enclosure comes in a Dark Gray (Pantone 422C)

Mounting Rails

The aluminum mounting rails installed within the NBPC181610-00VDR provides provisions to mount DIN3 Rails for installing a number of off-the-shelf DIN Modules and systems. The HGX-PMT13 Mounting package allows the populated enclosure to be mounted on poles, securely, in and around your site. The flexibility of DIN rail mounting system and the large selection of modules available offer any number of application solutions indoors and out, even in rainy environments. The NEMA Type 3R/IP24 provides a vented, weatherproof environment, to safely house the control, routing and power systems being designed with the DIN Modules. The DIN Rails can be adapted to hold other systems and components to accommodate their placement in the enclosure. The enclosure features holes for two N-Bulkhead lightning protectors or connectors, a grounding lug, and a cable conduit connector to accept power or system feeds into the enclosure.

The HGX-PMT series of pole mounting kits allow the populated enclosure to be securely mounted to a variety of different size poles.

Compatible versions include HGX-PMT13, HGX-PMT16, HGX-PMT28, HGX-PMT29, HGX-PMT30 & HGX-PMT33

Size

Outer Height	18.9 in	[480.06 mm]
Outer Width	16.8 in	[426.72 mm]
Outer Depth	11.3 in	[287.02 mm]
Inner Height	18.2 in	[462.28 mm]
Inner Width	16.2 in	[411.48 mm]
Inner Depth	9.7 in	[246.38 mm]
Weight	17.5 lbs	[7.94 kg]
Enclosure Material	Polycarbonate	

Click the following link (or enter part number in "SEARCH" on website) to obtain additional part information including price, inventory and certifications: [18x16x10 Polycarbonate Weatherproof Outdoor IP24 NEMA 3R Enclosure, Modified Base DIN Rail Mount Vented Lid Dark Gray NBPC181610-00VDR](#)



an INFINIT^e brand

18x16x10 Polycarbonate Weatherproof Outdoor IP24 NEMA 3R Enclosure, Modified Base DIN Rail Mount Vented Lid Dark Gray



NEMA Enclosures Technical Data Sheet

NBPC181610-00VDR

Environmental Specifications

Temperature Rating	-40° to 265° F [-40° to 129° C]
NEMA Rating	3R
Ingress Protection (IP) Rating	IP24

Compliance Certifications

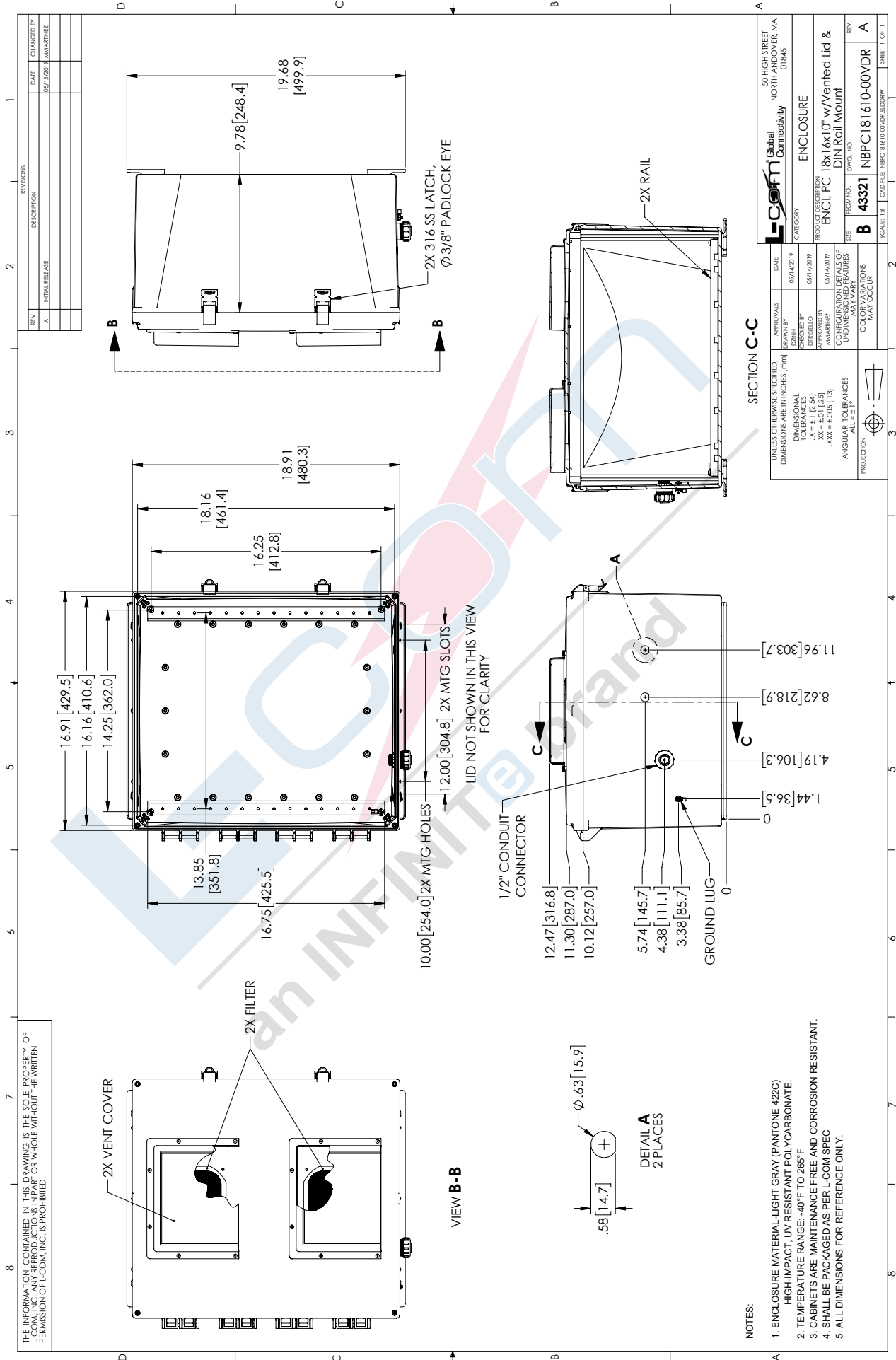
UL Listed	No
-----------	----

Click the following link (or enter part number in "SEARCH" on website) to obtain additional part information including price, inventory and certifications: [18x16x10 Polycarbonate Weatherproof Outdoor IP24 NEMA 3R Enclosure, Modified Base DIN Rail Mount Vented Lid Dark Gray NBPC181610-00VDR](#)

URL: <https://www.l-com.com/nema-enclosures-18x16x10-polycarb-weatherproof-nema-3r-enclosure-modified-base-din-rail-mount-vented-lid-dark-gray-p.aspx>

NBPC181610-00VDR CAD Drawing

18x16x10 Polycarbonate Weatherproof Outdoor IP24 NEMA 3R
Enclosure, Modified Base DIN Rail Mount Vented Lid Dark Gray



THE INFORMATION CONTAINED IN THIS DRAWING IS THE SOLE PROPERTY OF L-COM, INC. NO PART OF THIS DRAWING IS TO BE REPRODUCED OR TRANSMITTED IN ANY FORM OR BY ANY MEANS, ELECTRONIC OR MECHANICAL, WITHOUT THE WRITTEN PERMISSION OF L-COM, INC. IS PROHIBITED.

- NOTES:**
- ENCLOSURE MATERIAL-LIGHT GRAY (PANTONE 422C) HIGH-IMPACT, UV RESISTANT POLYCARBONATE.
 - TEMPERATURE RANGE: -40°F TO 265°F.
 - CABINETS ARE MAINTENANCE FREE AND CORROSION RESISTANT.
 - SHALL BE PACKAGED AS PER L-COM SPEC
 - ALL DIMENSIONS FOR REFERENCE ONLY.