



18x16x10 UL Listed Polycarbonate Weatherproof Outdoor IP66 NEMA 4X Enclosure Dark Gray

NEMA Enclosures Technical Data Sheet

NBPC181610

Features

- UL® Listed High-Impact, UV Resistant Polycarbonate (Dark Gray)
- Stainless steel latches with padlock eye
- NEMA Type 4X / IP66* rated (includes (4x) optional lid corner screws**)
- Fully gasketed lid & user installed wall mounting brackets

Applications

- Remote Wireless LAN WiFi equipment installations
- Indoor and outdoor installations
- Rapid Deployment Installations
- Corrosive environments & hotspot applications
- Protection of equipment from theft or damage

Description

The box is a rugged weatherproof enclosure that is ideal for both indoor and outdoor applications. Constructed from High-Impact, UV Resistant Polycarbonate material that provides superior durability to impacts and ease of modification while maintaining minimum weight. It is well suited for high temperature or corrosive environments. The included wall mount brackets come uninstalled and bagged with their hardware inside of the enclosure. Once the brackets are installed the enclosure can be mounted directly to any flat wall surface provided proper screws are used into secure studs. The brackets, once installed, also allow you to use our HGX-PMT pole mount kits. The lid features a non-metallic hinge system that allows for quick removal & can be reattached just as quickly without the need for any tools. The enclosure comes with a pair of stainless-steel latches with padlock eyes allowing you to secure the enclosure from tampering. The enclosure comes in a Dark Gray (Pantone 422C)

The HGX-PMT series of pole mounting kits allow the populated enclosure to be securely mounted to a variety of different size poles.

Compatible versions include HGX-PMT13, HGX-PMT16, HGX-PMT28, HGX-PMT29, HGX-PMT30 & HGX-PMT33

*Note: Enclosure ports (Cable conduit connector and N-type holes for lightning protectors or connectors) must be properly sealed to maintain NEMA Type 4X / IP66 rating

**Note: If all four of the optional lid screws are installed the enclosure can achieve. NEMA 6P / IP68 however all of the openings would have to be properly sealed with an IP68 rated plug, gland or coupler.

Size

Outer Height	18.9 in	[480.06 mm]
Outer Width	16.8 in	[426.72 mm]
Outer Depth	11.3 in	[287.02 mm]
Inner Height	18.2 in	[462.28 mm]
Inner Width	16.2 in	[411.48 mm]
Inner Depth	9.7 in	[246.38 mm]
Weight	19 lbs	[8.62 kg]
Enclosure Material	Polycarbonate	

Environmental Specifications

Temperature Rating	-40° to 265° F [-40° to 129° C]
NEMA Rating	4X
Ingress Protection (IP) Rating	IP66

Click the following link (or enter part number in "SEARCH" on website) to obtain additional part information including price, inventory and certifications: [18x16x10 UL Listed Polycarbonate Weatherproof Outdoor IP66 NEMA 4X Enclosure Dark Gray NBPC181610](#)



an INFINIT^e brand

18x16x10 UL Listed Polycarbonate Weatherproof
Outdoor IP66 NEMA 4X Enclosure Dark Gray



NEMA Enclosures Technical Data Sheet

NBPC181610

Compliance Certifications

UL Listed

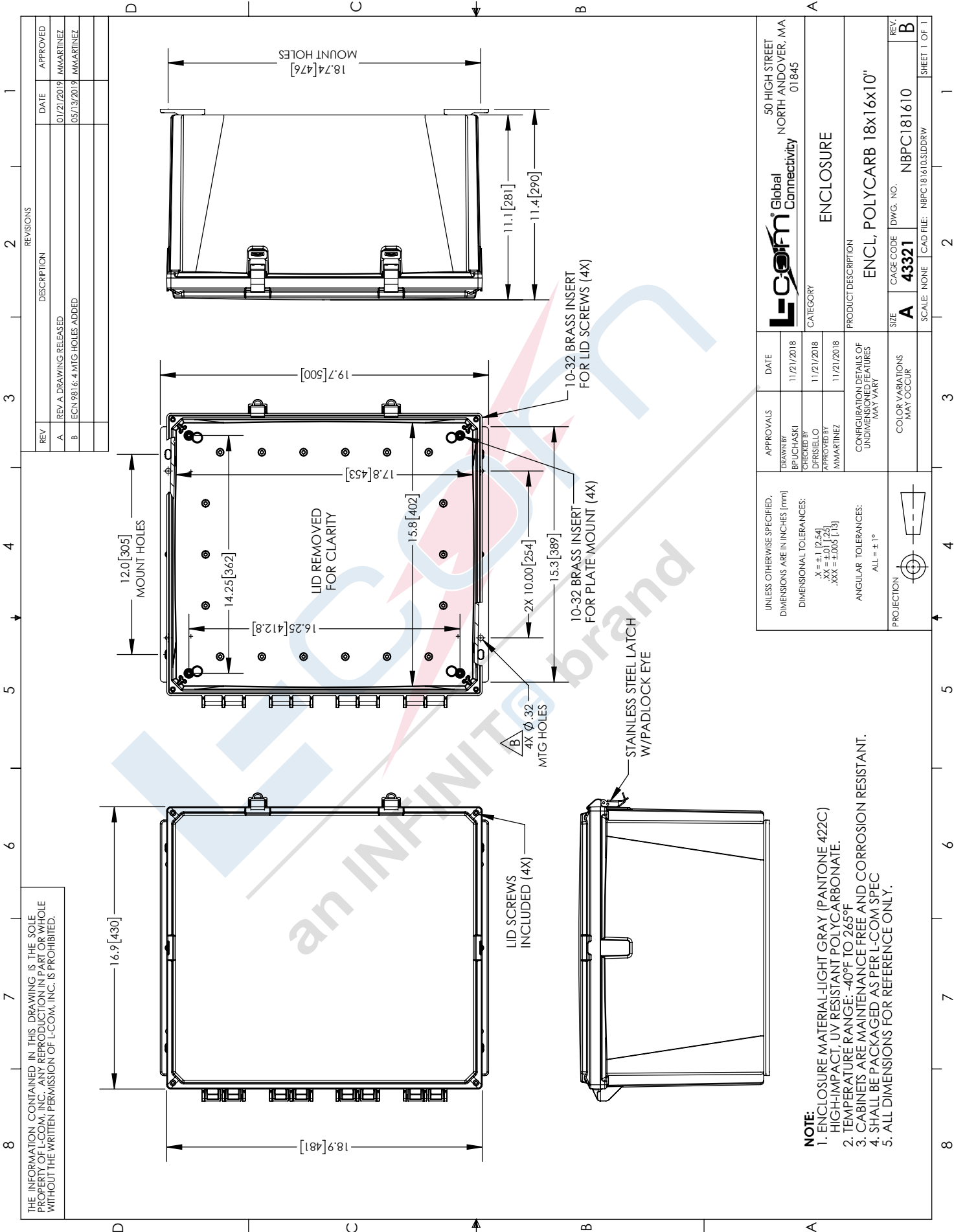
E508536

Click the following link (or enter part number in "SEARCH" on website) to obtain additional part information including price, inventory and certifications: [18x16x10 UL Listed Polycarbonate Weatherproof Outdoor IP66 NEMA 4X Enclosure Dark Gray NBPC181610](https://www.l-com.com/nema-enclosures-18x16x10-ul-listed-polycarbonate-weatherproof-nema-4x-enclosure-dark-gray-p.aspx)

URL: <https://www.l-com.com/nema-enclosures-18x16x10-ul-listed-polycarbonate-weatherproof-nema-4x-enclosure-dark-gray-p.aspx>

NBPC181610 CAD Drawing

18x16x10 UL Listed Polycarbonate Weatherproof Outdoor IP66 NEMA 4X Enclosure Dark Gray



THE INFORMATION CONTAINED IN THIS DRAWING IS THE SOLE PROPERTY OF L-COM, INC. ANY REPRODUCTION IN PART OR WHOLE WITHOUT THE WRITTEN PERMISSION OF L-COM, INC. IS PROHIBITED.

REV	DESCRIPTION	DATE	APPROVED
A	REV A DRAWING RELEASED	01/21/2019	MMARTINEZ
B	ECN 9816-4 MTG HOLES ADDED	05/13/2018	MMARTINEZ

UNLESS OTHERWISE SPECIFIED, DIMENSIONS ARE IN INCHES [mm] DIMENSIONAL TOLERANCES: X = ±.1 [2.54] XX = ±.01 [25] .XXX = ±.005 [1.3]		APPROVALS DRAWN BY: BPUCHASKI CHECKED BY: DFRISTELLO APPROVED BY: MMARTINEZ	DATE 11/21/2018 11/21/2018 11/21/2018
ANGULAR TOLERANCES: ALL = ± 1°		CONFIGURATION DETAILS OF UNDIMENSIONED FEATURES MAY VARY	
PROJECTION 		COLOR VARIATIONS MAY OCCUR	
PRODUCT DESCRIPTION ENCL, POLYCARB 18x16x10"		SCALE: NONE CAD FILE: NBPC181610.SDDRW	
ENCLOSURE		50 HIGH STREET NORTH ANDOVER, MA 01845	
ITEM CAGE CODE DWG. NO. REV. A 43321 NBPC181610 B		SHEET 1 OF 1	

- NOTE:**
- ENCLOSURE MATERIAL-LIGHT GRAY (PANTONE 422C) HIGH-IMPACT, UV RESISTANT POLYCARBONATE.
 - TEMPERATURE RANGE: -40°F TO 265°F
 - CABINETS ARE MAINTENANCE FREE AND CORROSION RESISTANT.
 - SHALL BE PACKAGED AS PER L-COM SPEC
 - ALL DIMENSIONS FOR REFERENCE ONLY.