

24x24x10 UL® Listed Polycarb Weatherproof Outdoor
IP68 NEMA 6P Enclosure, Clear Lid, Rail Kit, Dark Gray



NBRWPC242410

Features

- UL® Listed High-Impact, UV Resistant Polycarbonate (Dark Gray)
- Non-metallic latches and a padlock eye
- NEMA Type 6P/ IP68 rated
- Fully gasketed clear lid & user installed wall mounting brackets
- Rail Kit which comes with a Frame and set of four rails
- Low Profile, easily removable, Stainless Steel piano style hinge pin

Applications

- Remote Wireless LAN WiFi equipment installations
- Indoor and outdoor installations
- Rapid Deployment Installations
- Corrosive environments & hotspot applications
- Protection of equipment from theft or damage

Description

The box is a rugged weatherproof enclosure that is ideal for both indoor and outdoor applications. Constructed from High-Impact, UV Resistant Polycarbonate material that provides superior durability to impacts and ease of modification while maintaining minimum weight. It is well suited for high temperature or corrosive environments. The included wall mount brackets come uninstalled and bagged with their hardware inside of the enclosure. Once the brackets are installed the enclosure can be mounted directly to any flat wall surface provided proper screws are used into secure studs. The brackets, once installed, also allow you to use compatible HGX-PMT pole mount kits to mount to a variety of pole diameters. The clear lid features a Stainless Steel piano style hinge pin system that allows for quick removal & can be reattached just as quickly for maximum access and flexibility to install equipment. The clear lid provides an unobstructed view inside the enclosure allowing for the monitoring of installed equipment and its data readout, activity or warning lights without the need to open the lid. The enclosure comes with four Non-Metallic locking latches, two on the side and one each at the top and bottom of the lid to provide a tight NEMA Type 6P/ IP68 rated* seal. The lid includes a padlock eye allowing you to secure the enclosure from tampering or unauthorized access. The included Rail Kit come uninstalled and bagged with its hardware inside of the enclosure. Once the rail kit is installed it provides more mounting options to install a front swing plate, side plates as well as the standard back plate. The rail kit also allows you to use a variety of additional accessories. The enclosure comes in a Dark Gray (Pantone 422C)

The HGX-PMT series of pole mounting kits allow the populated enclosure to be securely mounted to a variety of different size poles.

Compatible versions include HGX-PMT39, HGX-PMT40, HGX-PMT41, HGX-PMT42 (sold separately)

Mounting standoffs inside the enclosure can be used to install backplates.

We offer two compatible aluminum back plate options (sold separately)

- HGX-NPLATE45 with dimensions of 21.0" x 21.0"
- HGX-NPLATE46 with dimensions of 22.1" x 22.1" which provides 10% more mounting space

We also offer a standard PVC back plate (sold separately)

- HGX-NPLATE48 with dimensions of 21.0" x 21.0"

Additional compatible accessories available: (sold separately)

- NBPC-24-DIN35K DIN Rail Kit
- NBPCG-DSTPK door stop kit
- NBPC24-BPKG Panel Pad Kit
- NBPC24-SDP aluminum side panel

Click the following link (or enter part number in "SEARCH" on website) to obtain additional part information including price, inventory and certifications:
[24x24x10 UL® Listed Polycarb Weatherproof Outdoor IP68 NEMA 6P Enclosure, Clear Lid, Rail Kit, Dark Gray NBRWPC242410](#)

24x24x10 UL® Listed Polycarb Weatherproof Outdoor
IP68 NEMA 6P Enclosure, Clear Lid, Rail Kit, Dark Gray



NBRWPC242410

- NBPC24-SWP aluminum swing panel

*Note: Any holes or openings you might introduce must be properly sealed to maintain NEMA Type 6P / IP68 rating

Size

Outer Height	25.3 in	[642.62 mm]
Outer Width	25.8 in	[655.32 mm]
Outer Depth	11.5 in	[292.1 mm]
Inner Height	23.3 in	[591.82 mm]
Inner Width	23.3 in	[591.82 mm]
Inner Depth	10.6 in	[269.24 mm]
Weight	35 lbs	[15.88 kg]
Enclosure Material	Polycarbonate	

Environmental Specifications

Temperature Rating	-40° to 265°F [-40° to 129°C]
NEMA Rating	6P
Ingress Protection (IP) Rating	IP68

Compliance Certifications

UL Listed	E508536
-----------	---------

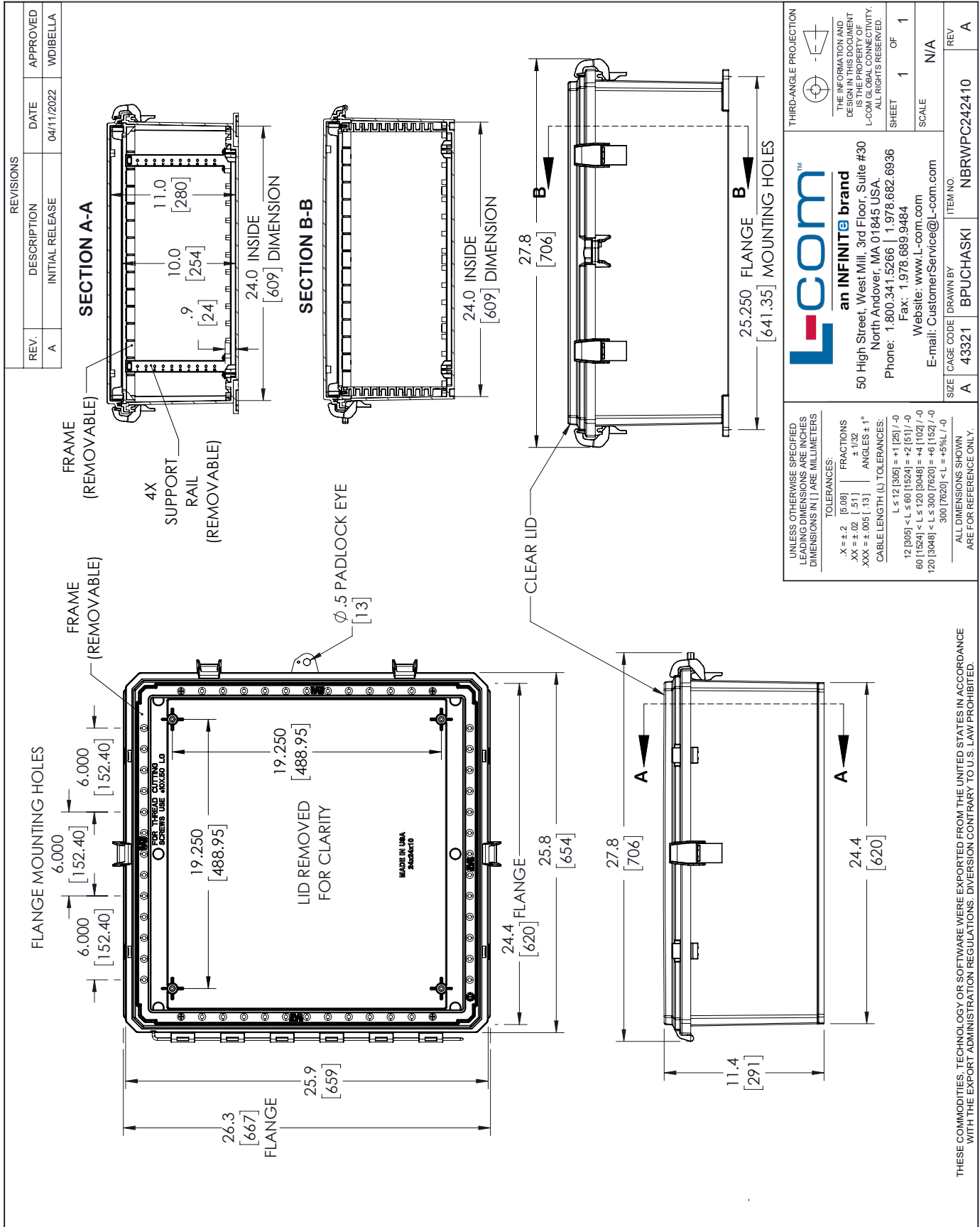
24x24x10 UL® Listed Polycarb Weatherproof Outdoor IP68 NEMA 6P Enclosure, Clear Lid, Rail Kit, Dark Gray from L-com has same day shipment for domestic and International orders. Our portfolio includes coaxial cable assemblies, connectors, adapters and custom products as well as lightning and surge protectors, NEMA rated enclosures, and an RF product line which includes antennas, amplifiers, passive, and active components. Click the following link (or enter part number in "SEARCH" on website) to obtain additional part information including price, inventory and certifications: 24x24x10 UL® Listed Polycarb Weatherproof Outdoor IP68 NEMA 6P Enclosure, Clear Lid, Rail Kit, Dark Gray NBRWPC242410

URL: <https://www.l-com.com/24x24x10-ul-listed-polycarb-weatherproof-outdoor-ip68-nema-6p-enclosure-clear-lid-rail-kit-dark-gray-nbrwpc242410-p.aspx>

The information contained within this document is accurate to the best of our knowledge and representative of the part described herein. It may be necessary to make modifications to the part and/or the documentation of the part in order to implement improvements. L-com reserves the right to make such changes as required. Unless otherwise stated, all specifications are nominal. L-com does not make any representation or warranty regarding the suitability of the part described herein for any particular purpose, and L-com does not assume liability arising out of the use of any part or document.

The information contained within this document is accurate to the best of our knowledge and representative of the part described herein. It may be necessary to make modifications to the part and/or the documentation of the part in order to implement improvements. L-com reserves the right to make such changes as required. Unless otherwise stated, all specifications are nominal. L-com does not make any representation or warranty regarding the suitability of the part described herein for any particular purpose, and L-com does not assume liability arising out of the use of any part or document.

L-com CAD Drawing



THESE COMMODITIES, TECHNOLOGY OR SOFTWARE WERE EXPORTED FROM THE UNITED STATES IN ACCORDANCE WITH THE EXPORT ADMINISTRATION REGULATIONS. DIVERSION CONTRARY TO U.S. LAW PROHIBITED.

T.R.W.D