

12x10x06 UL Listed Stainless Steel Weatherproof
Outdoor IP66 NEMA 4X Enclosure

NBSS121006



Features

- UL[®] Listed 16ga. Brushed 304 Stainless Steel
- 304 Stainless steel latch with padlock eye
- NEMA Type 4X / IP66* rated
- Fully gasketed lid, integral welded mounting flange & 316 Stainless steel hinge and removable pin

Applications

- Electrical & Electronics Instruments, Controls & Components, Wireless LAN WiFi equipment
- Indoor and outdoor installations
- Rapid Deployment Installations
- EMI/RFI Sensitive environments/equipment
- Protection of equipment from theft or damage

Description

The box is a rugged weatherproof enclosure that is ideal for both indoor and outdoor applications. Constructed from 16ga. Brushed 304 Stainless Steel that provides superior protection against corrosion, chemicals and wet conditions. The enclosure is constructed with UV protected and impact resistant material to ensure protection in any environment. The integrated welded mounting flange allows the enclosure to be mounted directly to any flat wall surface provided proper screws are used into secure studs. The enclosure can also be mounted to a wide range of pole diameters with one of our optional pole mounting hardware kits. The fully gasketed lid features a 316 stainless steel removable hinge pin that allows for quick removal & reattachment with only a pair of pliers. The enclosure comes with a 304 stainless steel latch with padlock eye allowing you to secure the enclosure from tampering.

The NBSS121006 is ideal for custom applications, which may require special modifications to the enclosure. Mounting stand-offs inside the enclosure can be used for mounting one of our blank accessory plates like the aluminum HGX-NPLATE20 or the non-metallic star-board HGX-NPLATE21.

The NBSS121006 comes with a UL Listing Mark in every enclosure. Ideal for all construction sites and equipment enclosure applications.

The HGX-PMT series of pole mounting kits allow the populated enclosure to be securely mounted to a variety of different size poles.

Compatible versions include HGX-PMT13, HGX-PMT16, HGX-PMT28, HGX-PMT29, HGX-PMT30 & HGX-PMT33

*Note: Enclosure ports (Cable conduit connector and N-type holes for lightning protectors or connectors) must be properly sealed to maintain NEMA Type 4X / IP66 rating

Size

Outer Height	13.5 in	[342.9 mm]
Outer Width	11.25 in	[285.75 mm]
Outer Depth	5.83 in	[148.08 mm]
Inner Height	13.3 in	[337.82 mm]
Inner Width	10 in	[254 mm]
Inner Depth	5.69 in	[144.53 mm]
Weight	13.3 lbs	[6.03 kg]
Enclosure Material	304 Stainless Steel	

Environmental Specifications

Temperature Rating	-40° to 320°F [-40° to 160°C]
NEMA Rating	4X

Click the following link (or enter part number in "SEARCH" on website) to obtain additional part information including price, inventory and certifications:
[12x10x06 UL Listed Stainless Steel Weatherproof Outdoor IP66 NEMA 4X Enclosure NBSS121006](#)

12x10x06 UL Listed Stainless Steel Weatherproof
Outdoor IP66 NEMA 4X Enclosure



NBSS121006

Ingress Protection (IP) Rating IP66

Compliance Certifications

UL Listed E337864

12x10x06 UL Listed Stainless Steel Weatherproof Outdoor IP66 NEMA 4X Enclosure from L-com has same day shipment for domestic and International orders. Our portfolio includes coaxial cable assemblies, connectors, adapters and custom products as well as lightning and surge protectors, NEMA rated enclosures, and an RF product line which includes antennas, amplifiers, passive, and active components. Click the following link (or enter part number in "SEARCH" on website) to obtain additional part information including price, inventory and certifications: 12x10x06 UL Listed Stainless Steel Weatherproof Outdoor IP66 NEMA 4X Enclosure NBSS121006

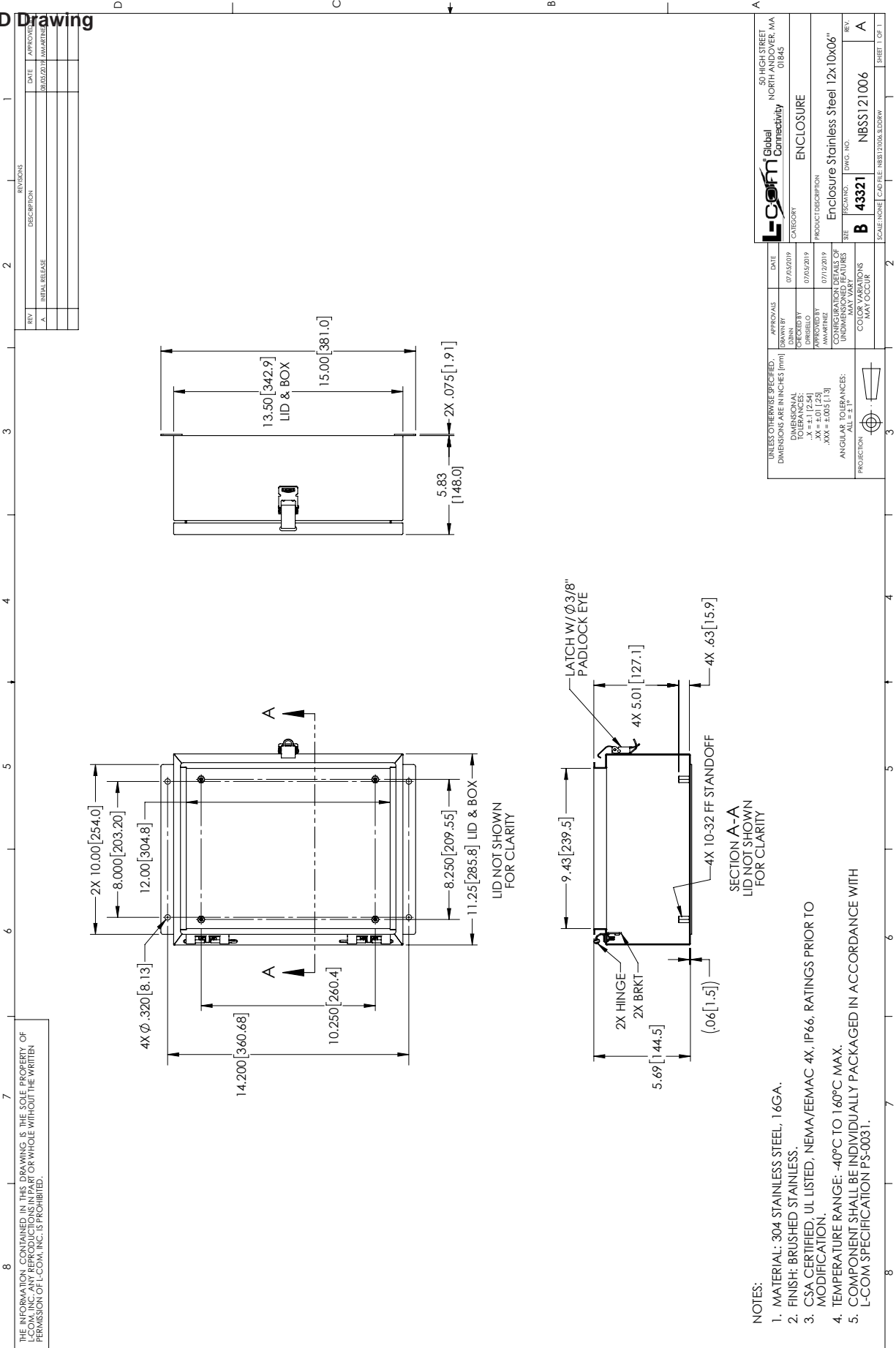
URL: <https://www.l-com.com/nema-enclosures-12x10x06-ul-listed-stainless-steel-weatherproof-nema-4x-enclosure-p.aspx>

The information contained within this document is accurate to the best of our knowledge and representative of the part described herein. It may be necessary to make modifications to the part and/or the documentation of the part in order to impliment improvements. L-com reserves the right to make such changes as required. Unless otherwise stated, all specifications are nominal. L-com does not make any representation or warranty regarding the suitability of the part described herein for any particular purpose, and L-com does not assume liability arising out of the use of any part or document.

The information contained within this document is accurate to the best of our knowledge and representative of the part described herein. It may be necessary to make modifications to the part and/or the documentation of the part in order to impliment improvements. L-com reserves the right to make such changes as required. Unless otherwise stated, all specifications are nominal. L-com does not make any representation or warranty regarding the suitability of the part described herein for any particular purpose, and L-com does not assume liability arising out of the use of any part or document.

12x10x06 UL Listed Stainless Steel Weatherproof Outdoor IP66 NEMA 4X Enclosure

L-com CAD Drawing



THE INFORMATION CONTAINED IN THIS DRAWING IS THE SOLE PROPERTY OF L-COM, INC. ANY REPRODUCTIONS IN PART OR WHOLE WITHOUT THE WRITTEN PERMISSION OF L-COM, INC. IS PROHIBITED.

REV	INITIAL RELEASE	DATE	APPROVED
A		08/02/2019	MMW/STW

REV	DESCRIPTION	DATE	APPROVED
A	INITIAL RELEASE	08/02/2019	MMW/STW

APPROVALS	DATE	50 HIGH STREET NORTH ANDOVER, MA 01845
DRAWN BY	07/05/2019	L-com Global Connectivity
CHECKED BY	07/05/2019	CATEGORY
APPROVED BY	07/12/2019	ENCLOSURE
DESIGNED BY		PRODUCT DESCRIPTION
MANUFACTURED BY		Enclosure Stainless Steel 12x10x06"
UNDESIGNED FEATURES		REV. NO.
MAY VARY		B 43321
COLOR OPTIONS		NBSS121006
ANY OPTIONS		SCALE: NONE
		CAD FILE: NBS121006.3D.DRAW
		SHEET 1 OF 1

UNLESS OTHERWISE SPECIFIED:
DIMENSIONS ARE IN INCHES (mm)

DIMENSIONAL TOLERANCES:
FRACTIONS: .XX ± .01 [.254]
DECIMALS: .XXX ± .005 [.127]
ANGULAR TOLERANCES:
ALL ± 1°

PROJECTION

- NOTES:
1. MATERIAL: 304 STAINLESS STEEL, 16GA.
 2. FINISH: BRUSHED STAINLESS.
 3. CSA CERTIFIED, UL LISTED, NEMA/EMAC 4X, IP66, RATINGS PRIOR TO MODIFICATION.
 4. TEMPERATURE RANGE: -40°C TO 160°C MAX.
 5. COMPONENT SHALL BE INDIVIDUALLY PACKAGED IN ACCORDANCE WITH L-COM SPECIFICATION PS-0031.

LID NOT SHOWN FOR CLARITY

SECTION A-A
LID NOT SHOWN FOR CLARITY