

Passive CWDM, LGX Mux & Demux, 8 Channels with 20 nm spacing, starting at Ch 1471nm, LC/APC with Monitor & Pass



PCW1C-08347-NN36

Features

- Passive
- CWDM
- 20nm spacing
- LGX Mux & Demux
- 8 Channels
- Starting with channel 1471nm
- LC/APC Monitor & Pass

Applications

- Single Mode Fiber Networking
- Single Fiber
- Mux function
- Metro transport
- Regional Distribution
- Outside Plant (OSP) Operation

Description

L-com's PCW1D-8F327-NN36 is a CWDM passive filter with 8 channels with 20nm spacing. L-com's PCW1D-8F327-NN36 is a LGX filter with Mux and Demux functionality. L-com's PCW1D-8F327-NN36 has 4 channels: 1471, 1491, 1511, 1531, 1551, 1571, 1591, 1611nm with LC/APC and monitor and pass. A monitor port used to analyze or test the power signal coming into or out of a multiplexer, either before it reaches the de-multiplexer (received signal) or as it exits the multiplexer (transmitted signal). The pass port is designed for adding more wavelengths to the existing network. It is used by connecting the common (or line) port from another multiplexer utilizing different wavelengths. The addition of these channels allows for network expansion without interruption of existing connectivity, or additional fiber usage. L-com's PCW1D-8F327-NN36 is one of thousands of fiber optic products available in-stock and ready to ship today.

Configuration

Module Type	CWDM
Module Function	Mux/Demux
Number of Channels	8
Starting Channel	1471nmnm
Optional Ports	PASS Port, Monitor Port
Connector Type	LC/APC

Filter Specifications

Description	Minimum	Typical	Maximum	Units
Operating Wavelength	1260		1635	nm
Pass Port Wavelength	1271		1611	nm
Pass Port Insertion Loss			2.8	dB
Pass Port Isolation	12			dB
Pass Band	-6.5		6.5	nm
Pass Band Ripple			0.5	dB
Center Wavelength (Channel)	1471		1611	nm
Channel Spacing (nm)		20		nm
Channel Insertion Loss			3	dB
Return Loss	45			dB

Click the following link (or enter part number in "SEARCH" on website) to obtain additional part information including price, inventory and certifications:
[Passive CWDM, LGX Mux & Demux, 8 Channels with 20 nm spacing, starting at Ch 1471nm, LC/APC with Monitor & Pass PCW1C-08347-NN36](#)

Passive CWDM, LGX Mux & Demux, 8 Channels with 20 nm spacing, starting at Ch 1471nm, LC/APC with Monitor & Pass



PCW1C-08347-NN36

Directivity	50	dB
PDL	0.25	dB
PMD	0.2	PS
Power Handling	300	mW
Channel to Monitor Port IL	25	dB
COM to Monitor Port IL	23	dB
IL Thermal Stability	0.005	dB/degC
Wavelength Thermal Stability	0.002	nm/degC

Size

Length	6.25 in [158.75 mm]
Weight	1 lbs [453.59 g]

Environmental Specifications

Temperature

Operating Range	-20 to +65 deg C
Storage Range	-40 to +85 deg C
Humidity	5-98 %RH

Compliance Certifications (see [product page](#) for current document)

Plotted and Other Data

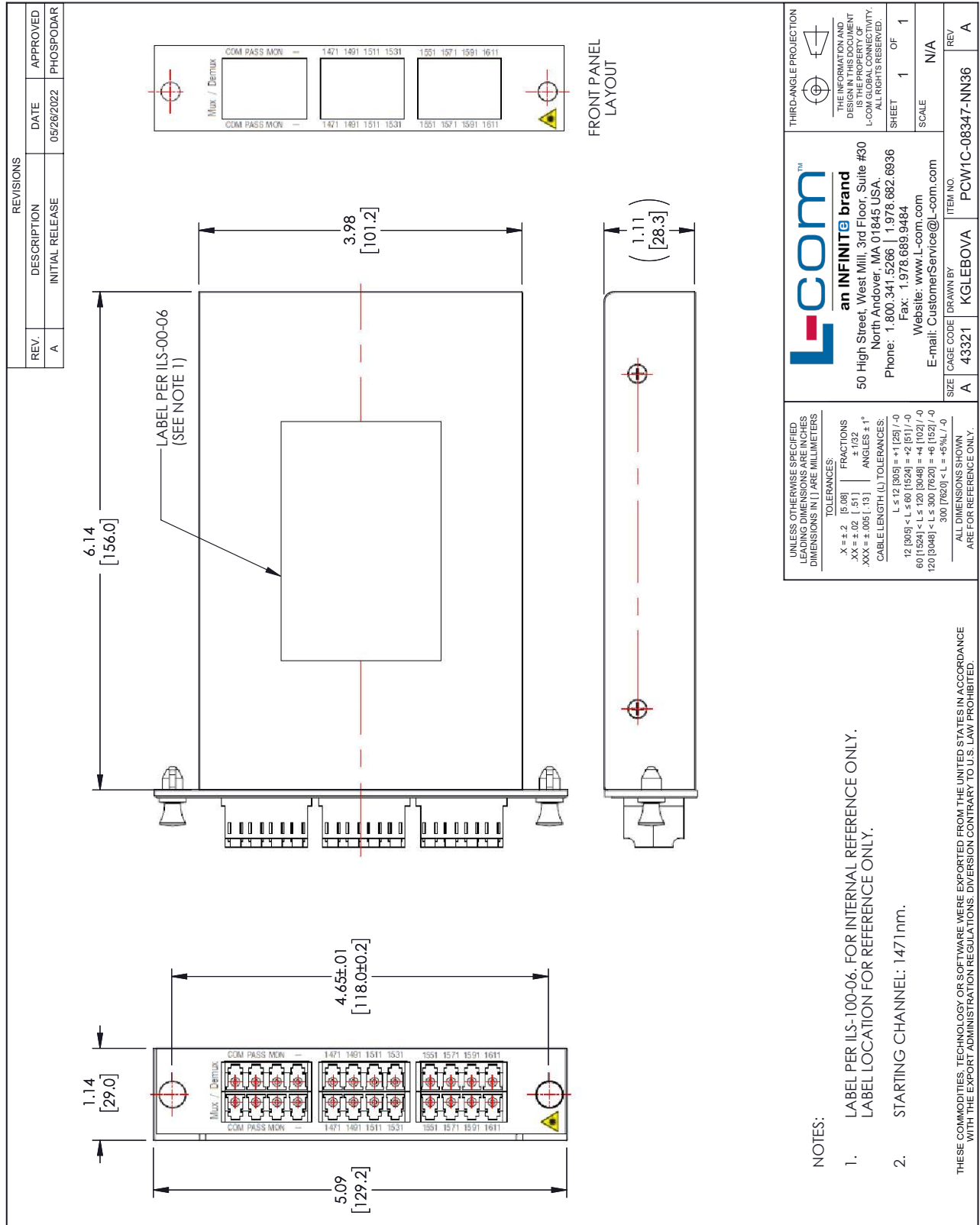
Notes:

Passive CWDM, LGX Mux & Demux, 8 Channels with 20 nm spacing, starting at Ch 1471nm, LC/APC with Monitor & Pass from L-com has same day shipment for domestic and International orders. Our portfolio includes coaxial cable assemblies, connectors, adapters and custom products as well as lightning and surge protectors, NEMA rated enclosures, and an RF product line which includes antennas, amplifiers, passive, and active components.

The information contained within this document is accurate to the best of our knowledge and representative of the part described herein. It may be necessary to make modifications to the part and/or the documentation of the part in order to impliment improvements. L-com reserves the right to make such changes as required. Unless otherwise stated, all specifications are nominal. L-com does not make any representation or warranty regarding the suitability of the part described herein for any particular purpose, and L-com does not assume liability arising out of the use of any part or document.

Passive CWDM, LGX Mux & Demux, 8 Channels with 20 nm spacing, starting at Ch 1471nm, LC/APC with Monitor & Pass

L-com CAD Drawing



UNLESS OTHERWISE SPECIFIED LEADING DIMENSIONS ARE IN INCHES DIMENSIONS IN [] ARE MILLIMETERS

THIRD-ANGLE PROJECTION

THE INFORMATION AND DIMENSIONS SHOWN ARE THE PROPERTY OF L-COM GLOBAL CONNECTIVITY. ALL RIGHTS RESERVED.

SHEET 1 OF 1

SCALE N/A

ITEM NO. REV

SIZE A CAGE CODE 43321 DRAWN BY KGLEBOVA PCW1C-08347-1N36

L-com™
an INFINITE brand
 50 High Street, West Mill, 3rd Floor, Suite #30
 North Andover, MA 01845, USA.
 Phone: 1.800.341.5266 | 1.978.682.6936
 Fax: 1.978.689.9484
 Website: www.L-com.com
 E-mail: CustomerService@L-com.com

ALL DIMENSIONS SHOWN ARE FOR REFERENCE ONLY.

UNLESS OTHERWISE SPECIFIED LEADING DIMENSIONS ARE IN INCHES DIMENSIONS IN [] ARE MILLIMETERS

TOLERANCES:
 .X = ±.2 [5.08] FRACTIONS ± 1/32
 .XX = ±.02 [.51] ANGLES ± 1°
 .XXX = ±.005 [.13] CABLE LENGTH (L) TOLERANCES:
 L ≤ 12 [305] < L ≤ 60 [1524] = ±1 [25] / -0
 60 [1524] < L ≤ 120 [3048] = ±4 [102] / -0
 120 [3048] < L ≤ 300 [7620] = ±6 [152] / -0
 300 [7620] < L = +5% / -0

- NOTES:
1. LABEL PER ILS-100-06. FOR INTERNAL REFERENCE ONLY.
 LABEL LOCATION FOR REFERENCE ONLY.
 2. STARTING CHANNEL: 1471nm.
- THESE COMMODITIES, TECHNOLOGY OR SOFTWARE WERE EXPORTED FROM THE UNITED STATES IN ACCORDANCE WITH THE EXPORT ADMINISTRATION REGULATIONS. DIVERSION CONTRARY TO U.S. LAW PROHIBITED.