

Passive CWDM, Rugged Cassette E (85x75x8.5mm) Mux,  
4 Ch. 20nm 1550nm, 1.0m 900um buffer, Pass Port



## PCWEM-04355-19N3

### Features

- Passive
- CWDM
- 20nm spacing
- Rugged Field Cassette (85x75x8.5mm)
- Single Fiber Mux
- 4 Channels
- Starting with channel 1551nm
- 1m 900um fiber leads
- Pass fiber for unused CWDM channels
- industrial temperature (-40c ~ 85c)

### Applications

- Single Mode Fiber Networking
- Single Fiber
- Mux function
- Metro transport
- Regional Distribution
- Outside Plant (OSP) Operation

### Description

The L-COM PCWEM-04355-19N3 is a CWDM Passive Filter with 4 CWDM Channels. The L-COM PCWEM-04355-19N3 is a 85x75x8.5mm field cassette filter with mux functionality. The L-COM PCWEM-04355-19N3 is rated for industrial temperature function (-40c to +85c) for applications such as outside plant installation. The L-COM PCWEM-04355-19N3 has 4 channels: 1551, 1571, 1591, and 1611nm, starting with 1551nm and with 20nm spacing. The L-COM PCWEM-04355-19N3 has 1 meter 900um buffer fiber leads. The PCWEM-04355-19N3 is a single fiber filter for muxing channels into a COM signal. The L-COM PCWEM-04355-19N3 includes the optional Pass fiber for carrying the CWDM channels not present in this filter. L-COM produces the high quality passive filters that your business can rely on. With products continually in stock and same-day shipping, our expert technical support and knowledgeable sales team can get you to the right parts for the job.

### Configuration

Connector Type	900um Bare Fiber (1M)
Number of Channels	4
Module Function	Mux
Filter Type	CWDM

### Filter Specifications

Description	Minimum	Typical	Maximum	Units
Operating Wavelength	1260		1635	nm
Pass Port Wavelength	1,271		1,611	nm
Pass Port Insertion Loss			1.8	dB
Pass Band	6.5			nm
Pass Band Ripple			0.5	dB
Center Wavelength (Channel)	1,551		1611	nm
Channel Spacing		20		nm
Channel Insertion Loss			2	dB
Return Loss	45			dB
Directivity			50	dB
PDL			0.25	dB

Click the following link (or enter part number in "SEARCH" on website) to obtain additional part information including price, inventory and certifications:  
[Passive CWDM, Rugged Cassette E \(85x75x8.5mm\) Mux, 4 Ch. 20nm 1550nm, 1.0m 900um buffer, Pass Port PCWEM-04355-19N3](#)

Passive CWDM, Rugged Cassette E (85x75x8.5mm) Mux,  
4 Ch. 20nm 1550nm, 1.0m 900um buffer, Pass Port



**PCWEM-04355-19N3**

PMD	0.2	PS
Power Handling	300	mW
IL Thermal Stability	0.005	dB/degC
Wavelength Thermal Stability	0.002	nm/degC

**Environmental Specifications**

**Temperature**

Operating Range	-40 to +85 deg C
Storage Range	-40 to +85 deg C
Humidity	5-95 %RH

**Compliance Certifications** (see [product page](#) for current document)

**Plotted and Other Data**

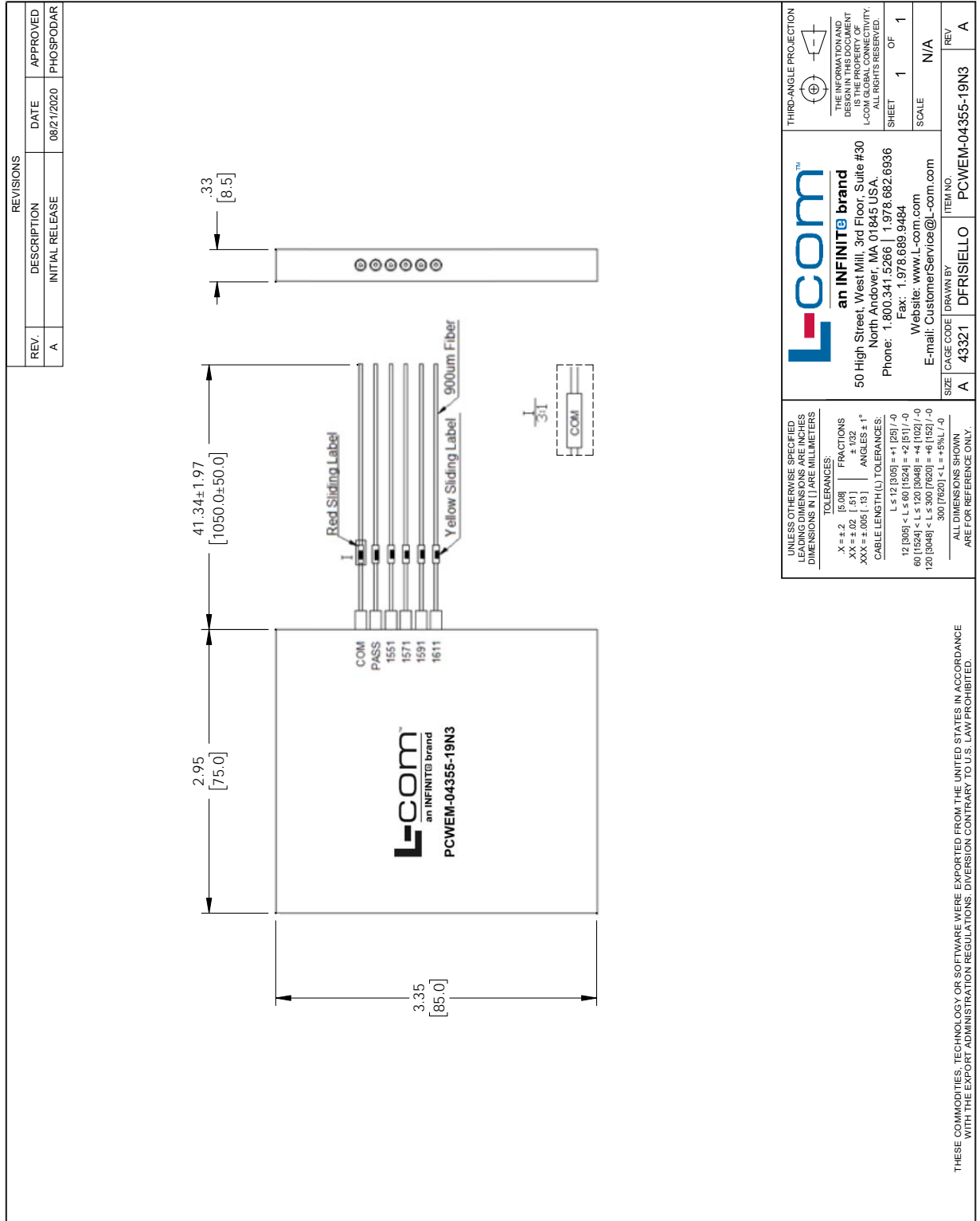
Notes:

Passive CWDM, Rugged Cassette E (85x75x8.5mm) Mux, 4 Ch. 20nm 1550nm, 1.0m 900um buffer, Pass Port from L-com has same day shipment for domestic and International orders. Our portfolio includes coaxial cable assemblies, connectors, adapters and custom products as well as lightning and surge protectors, NEMA rated enclosures, and an RF product line which includes antennas, amplifiers, passive, and active components.

The information contained within this document is accurate to the best of our knowledge and representative of the part described herein. It may be necessary to make modifications to the part and/or the documentation of the part in order to impliment improvements. L-com reserves the right to make such changes as required. Unless otherwise stated, all specifications are nominal. L-com does not make any representation or warranty regarding the suitability of the part described herein for any particular purpose, and L-com does not assume liability arising out of the use of any part or document.

Passive CWDM, Rugged Cassette E (85x75x8.5mm) Mux, 4 Ch. 20nm 1550nm, 1.0m 900um buffer, Pass Port

L-com CAD Drawing



UNLESS OTHERWISE SPECIFIED LEADING DIMENSIONS ARE INCHES DIMENSIONS IN [ ] ARE MILLIMETERS.

TOLERANCES:  
 .X = ±.2 [5.08] FRACTIONS ±.132  
 .XX = ±.02 [ .51] ANGLES ± 1°  
 .XXX = ±.005 [ .13]

CABLE LENGTH (L) TOLERANCES:  
 L ≤ 12 [305] = ±1 [25] / -0  
 12 [305] < L ≤ 60 [1524] = ±2 [51] / -0  
 60 [1524] < L ≤ 120 [3048] = ±4 [102] / -0  
 120 [3048] < L ≤ 300 [7620] = ±6 [152] / -0  
 300 [7620] < L = ±5% L / -0

ALL DIMENSIONS SHOWN ARE FOR REFERENCE ONLY.

**L-com**  
 an INFINITE brand  
 50 High Street, West Mill, 3rd Floor, Suite #30  
 North Andover, MA 01845 USA  
 Phone: 1.800.341.5266 | 1.978.682.6936  
 Fax: 1.978.689.9484  
 Website: www.L-com.com  
 E-mail: CustomerService@L-com.com

THIRD-ANGLE PROJECTION  
 THE INFORMATION AND DESIGN CONTAINED HEREIN IS THE PROPERTY OF L-COM GLOBAL CONNECTIVITY. ALL RIGHTS RESERVED.  
 SHEET 1 OF 1  
 SCALE N/A

SIZE	CAGE CODE	DRAWN BY	ITEM NO.
A	43321	DFRISIELLO	PCWEM-04355-19N3
			REV A