

PoE++ Midspan Injector, 1 Port Power Over Ethernet, 10 Gbps, CAT 6a or 7, 802.3at+ Certified, 56 Volts at 56 Watts Power Supply



## POE10GAT+

### Features

- Power over Ethernet injector, 56W, 56V@1A PoE++ Type 3 4PPoE IEEE 802.3at+ certified compliant
- 10gig rated (Cat 6a/7) for up to 180ft (55m); 1Gb and 5Gb data rates supported up to 328ft (100m); High quality shielded cabling such as from L-com's TRD695A Ethernet cable families is recommended for peak performance
- Power Supply Included
- Midspan type PoE (Power Over Ethernet Injector) with +(1,2)(4,5), -(3,6)(7,8) pin assignments
- Approvals for IEC, EMC, EN, CE and FCC (see datasheet for full listing)

### Applications

- Access Points, Bridges, Network Switches, Amplifiers and Amplified Antennas
- IP (Internet Protocol) and Security Cameras
- VoIP (Voice over Internet Protocol) Telephones
- Digital Signage and Building Control Systems
- Traffic Systems

### Description

L-com's POE10GAT+ PoE++ midspan injector is IEEE 802.3at+ certified and is here to meet all your Ethernet power needs. Its single port shielded design can supply up to 56 watts and 56 volts at 1 amps of power to your PoE device. The POE10GAT+ is perfect for IP phones, cameras, access points, network switches, digital signage, building, lighting, traffic control systems or any Type 3 or 4 PoE PoE++ IEEE 802.3at+ compliant device.

This PoE++ midspan injector part number POE10GAT+ from L-com is certified for up to 10 gigabit speeds (Category 6a or 7) for up to 180ft (55m). 1 and 5 gigabit speeds are supported up to 328ft (100m). High quality Ethernet cables such as from L-com's TRD695A line are recommended for peak performance. The power supply is included with each PoE++ midspan Category 6a or 7 Power over Ethernet unit.

L-com's POE10GAT+ PoE++ injector is certified for various IEC, EMC, EN and FCC regulations (see datasheet for full details) and is CE listed. It's simple and compact design is both easy to use and set up and includes mounting ears if needed. This L-com's PoE++ midspan injector 56 watts and 56 volts Power over Ethernet in stock and ready to ship, buy online from L-com today.

### Electrical Specifications

Description	Minimum	Typical	Maximum	Units
Ethernet Connectors		RJ45 Jack		
PoE Version		802.3af		
Ethernet Standard		Category 6, 10/100/1000/10000T (10Gb)		
Max Current			1	A
Voltage Rating DC (Input)			240	VDC
Voltage Rating DC (Output)			56	VDC
Operating Voltage AC			264	VAC
Power Connector		2.5mm DC Jack		

Electrical Specification Notes:

Click the following link (or enter part number in "SEARCH" on website) to obtain additional part information including price, inventory and certifications:  
[PoE++ Midspan Injector, 1 Port Power Over Ethernet, 10 Gbps, CAT 6a or 7, 802.3at+ Certified, 56 Volts at 56 Watts Power Supply](#)

PoE++ Midspan Injector, 1 Port Power Over Ethernet, 10 Gbps, CAT 6a or 7, 802.3at+ Certified, 56 Volts at 56 Watts Power Supply



## POE10GAT+

10Gb distance may vary according to the cable and data source used. Shielded, high quality network cable is recommended such as L-com's TRD695A line. Category 6a/7, 10Gb distances are supported up to 180ft (55m) with 1Gb and 5Gb distances supported up to 328ft (100m) when using appropriate cabling.

### Mechanical Specifications

Size		
Height	1.5 in	[38.1 mm]
Width	2.5 in	[63.5 mm]
Length	5.5 in	[139.7 mm]
Weight	0.507 lbs	[229.97 g]
Housing Material	Aluminum	

### Environmental Specifications

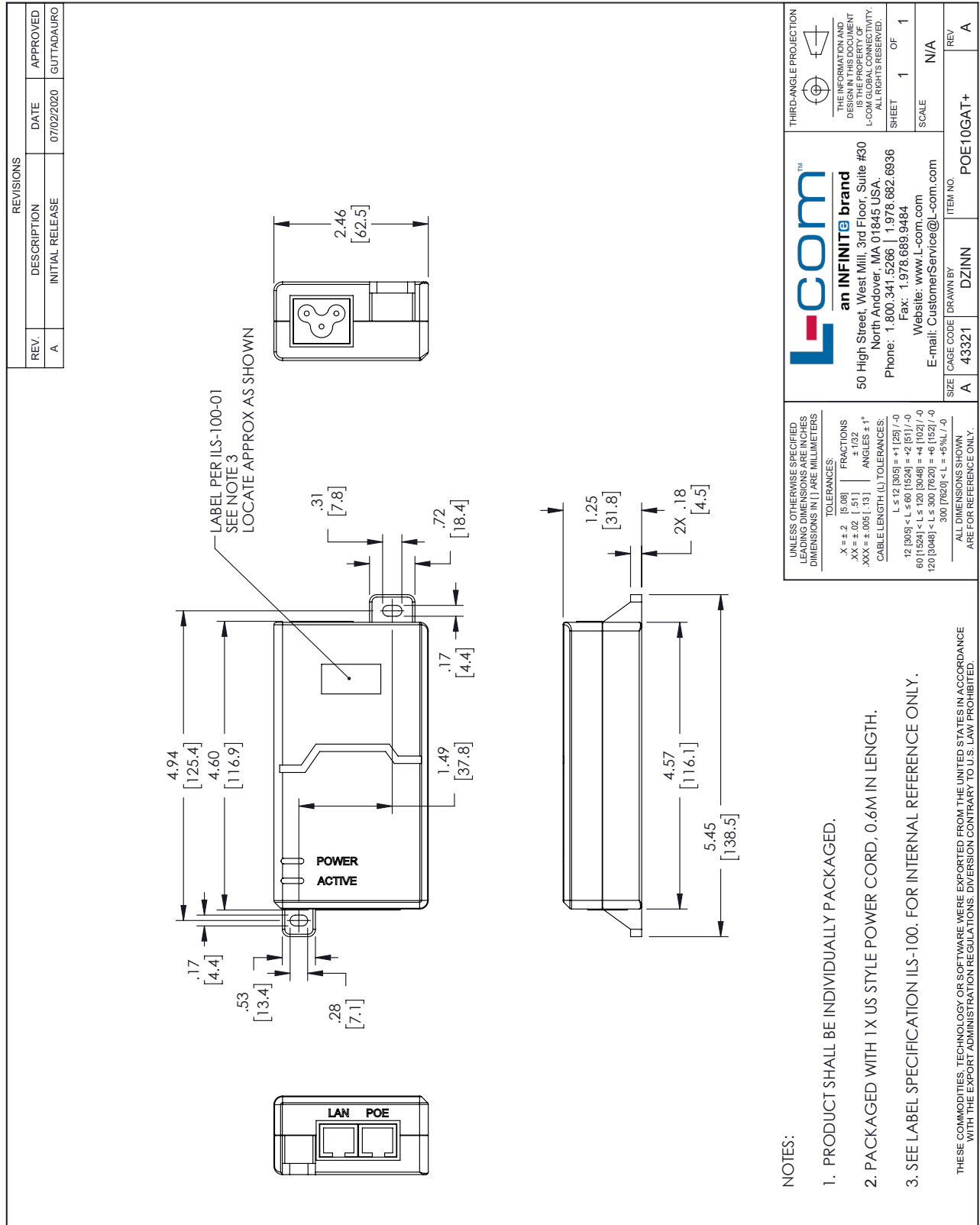
Operating Temperature, Injector	-40 to +70 deg C
Environment Type	Indoor
EMI, EMC, EN Compliance	Yes per EMC Directive 2014/30/EU with compliance to EN 55032:2015, EN55035:2017, EN 61000-3-2:2019, EN61000-3-3:2013+A1:2019 & EN 62368-1:2014+A11:2017
FCC Compliant	Yes per Part 15, Subpart B Class B, ANSI C63.4:2014
CE-LVD Marking	Yes per LVD 2014/35/EU

Our portfolio includes coaxial cable assemblies, connectors, adapters and custom products as well as lightning and surge protectors, NEMA rated enclosures, and an RF product line which includes antennas, amplifiers, passive, and active components.

The information contained in this document is accurate to the best of our knowledge and representative of the part described herein. It may be necessary to make modifications to the part and/or the documentation of the part, in order to implement improvements. L-com reserves the right to make such changes as required. Unless otherwise stated, all specifications are nominal. L-com does not make any representation or warranty regarding the suitability of the part described herein for any particular purpose, and L-com does not assume any liability arising out of the use of any part or documentation.

PoE++ Midspan Injector, 1 Port Power Over Ethernet, 10 Gbps, CAT 6a or 7, 802.3at+ Certified, 56 Volts at 56 Watts Power Supply

L-com CAD Drawing



NOTES:

1. PRODUCT SHALL BE INDIVIDUALLY PACKAGED.
2. PACKAGED WITH 1 X STYLE POWER CORD, 0.6M IN LENGTH.
3. SEE LABEL SPECIFICATION ILS-100. FOR INTERNAL REFERENCE ONLY.

THESE COMMODITIES, TECHNOLOGY OR SOFTWARE WERE EXPORTED FROM THE UNITED STATES IN ACCORDANCE WITH THE EXPORT ADMINISTRATION REGULATIONS. DIVERSION CONTRARY TO U.S. LAW PROHIBITED.

UNLESS OTHERWISE SPECIFIED LEADING DIMENSIONS ARE IN INCHES DIMENSIONS IN [ ] ARE MILLIMETERS

TOLERANCES:

.X = ± .2 [5.08] FRACTIONS ± 1/32  
 .XX = ± .02 [ .51] ± 1/32  
 .XXX = ± .005 [ .13] ANGLES ± 1°

CABLE LENGTH (L) TOLERANCES:

L ≤ 12 [305] < L ≤ 60 [1524] = +1 [25] / -0  
 60 [1524] < L ≤ 120 [3048] = +4 [102] / -0  
 120 [3048] < L ≤ 300 [7620] = +6 [152] / -0  
 300 [7620] < L = +5%L / -0

ALL DIMENSIONS SHOWN ARE FOR REFERENCE ONLY.

**L-com**<sup>TM</sup>  
 an INFINITE brand  
 50 High Street, West Mill, 3rd Floor, Suite #30  
 North Andover, MA 01845, USA.  
 Phone: 1.800.341.5266 | 1.978.682.6936  
 Fax: 1.978.689.9484  
 Website: www.L-com.com  
 E-mail: CustomerService@L-com.com

SIZE CAGE CODE DRAWN BY  
 A 43321 DZINN POE10GAT+