

Passive PM Single Stage Isolator, Grade P, 1550nm,
1 meter 900um loose tube, FC/APC, narrow key



PPMSI-P55-191

Features

- Polarized Maintaining fiber
- polarization dependent
- Single Stage, grade P
- 1 meter, FC/APC, narrow key connectors
- Low insertion loss
- High isolation
- High stability and reliability

Applications

- Optical Amplifier
- EDFA
- Communication Networks
- Fiber Sensors
- Coherent Dedection
- Research and Development
- Power Monitoring

Description

Elevate your optical systems to new heights with the PPMSI-P55-191, a passive polarization dependent isolator with Polarized Maintaining fiber designed to deliver exceptional performance. Categorized as a grade P (Premium) Single Stage isolator, it is the ideal choice for protecting light sources from back reflections and signal noise, ensuring precision and reliability in your optical systems. With a compact 35mm size and a 1550nm wavelength, it provides the critical characteristics needed for demanding optical tasks.

One notable feature of the L-com PPMSI-P55-191 is its polarization dependent design, making it a reliable option for maintaining the integrity of polarized light, minimizing feedback and backscatter into optical systems. It comes with FC/APC, narrow key connectors at both ends, offering flexibility in your optical configuration. Furthermore, the 900um loose tube ensures seamless integration into various setups.

This isolator is packed with essential features, including low insertion loss, high isolation, low PDL (Polarization-Dependent Loss), and outstanding stability and reliability. These features collectively guarantee that your optical systems operate at peak performance, with minimal signal loss, high isolation, and consistent results over time.

Whether you're working in optical amplification, communication networks, fiber sensing, coherent detection, research and development, or power monitoring, L-com's PPMSI-P55-191 is your trusted partner. Its versatility and quality make it a go-to choice for professionals seeking precision and excellence in PM polarized dependent optical isolators.

Experience the difference that the L-com PPMSI-P55-191 can bring to your optical projects and systems. It empowers you to achieve superior results, ensuring the highest standards of performance, stability, and reliability in your optical applications. Other configurations are available upon request, if you do not see the configuration, you are looking for, please contact out expert technical support.

Configuration

Polish	APC
Mode	Polarized Maintaining
Module Function	Isolator
Fiber Type	900um loose tube
Fiber Diameter	900um
Package	5.5x35mm
Stage	Single Stage

Click the following link (or enter part number in "SEARCH" on website) to obtain additional part information including price, inventory and certifications:
[Passive PM Single Stage Isolator, Grade P, 1550nm, 1 meter 900um loose tube, FC/APC, narrow key PPMSI-P55-191](#)

Passive PM Single Stage Isolator, Grade P, 1550nm,
1 meter 900um loose tube, FC/APC, narrow key



PPMSI-P55-191

Grade

Grade P

Filter Specifications

Description	Minimum	Typical	Maximum	Units
Operating Wavelength	1530	1550	1570	nm
Extinction Ratio	20			dB
Insertion Loss		0.7	0.85	dB
Return Loss	50			dB
Isolation	28	42		dB
Optical Power			300	mW

Size

Length 39.37 in [100 cm]
Weight 0.25 lbs [113.4 g]

Environmental Specifications

Temperature

Operating Range -5 to +70 deg C
Storage Range -40 to +85 deg C

Compliance Certifications (see [product page](#) for current document)

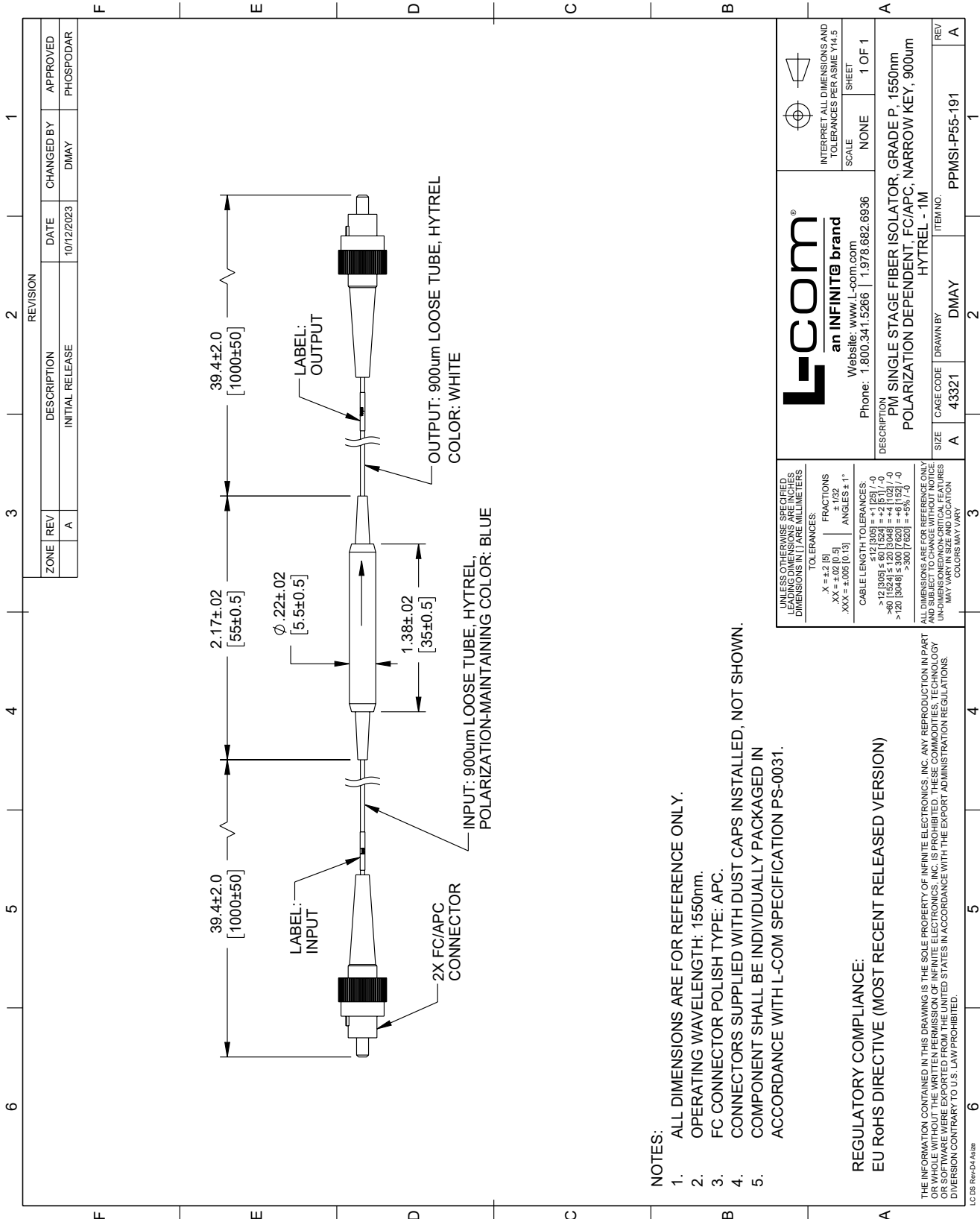
Plotted and Other Data

Notes:

Passive PM Single Stage Isolator, Grade P, 1550nm, 1 meter 900um loose tube, FC/APC, narrow key from L-com has same day shipment for domestic and International orders. Our portfolio includes coaxial cable assemblies, connectors, adapters and custom products as well as lightning and surge protectors, NEMA rated enclosures, and an RF product line which includes antennas, amplifiers, passive, and active components.

The information contained within this document is accurate to the best of our knowledge and representative of the part described herein. It may be necessary to make modifications to the part and/or the documentation of the part in order to impliment improvements. L-com reserves the right to make such changes as required. Unless otherwise stated, all specifications are nominal. L-com does not make any representation or warranty regarding the suitability of the part described herein for any particular purpose, and L-com does not assume liability arising out of the use of any part or document.

PPMSI-P55-191 CAD Drawing



- NOTES:**
1. ALL DIMENSIONS ARE FOR REFERENCE ONLY.
 2. OPERATING WAVELENGTH: 1550nm.
 3. FC CONNECTOR POLISH TYPE: APC.
 4. CONNECTORS SUPPLIED WITH DUST CAPS INSTALLED, NOT SHOWN.
 5. COMPONENT SHALL BE INDIVIDUALLY PACKAGED IN ACCORDANCE WITH L-COM SPECIFICATION PS-0031.

REGULATORY COMPLIANCE:
 EU RoHS DIRECTIVE (MOST RECENT RELEASED VERSION)

THE INFORMATION CONTAINED IN THIS DRAWING IS THE SOLE PROPERTY OF INFINITE ELECTRONICS, INC. ANY REPRODUCTION IN PART OR WHOLE WITHOUT THE WRITTEN PERMISSION OF INFINITE ELECTRONICS, INC. IS PROHIBITED. THIS DRAWING OR SOFTWARE WERE EXPORTED FROM THE UNITED STATES IN ACCORDANCE WITH THE EXPORT ADMINISTRATION REGULATIONS. DIVERSION CONTRARY TO U.S. LAW PROHIBITED.

LCIS Rev-D/A328