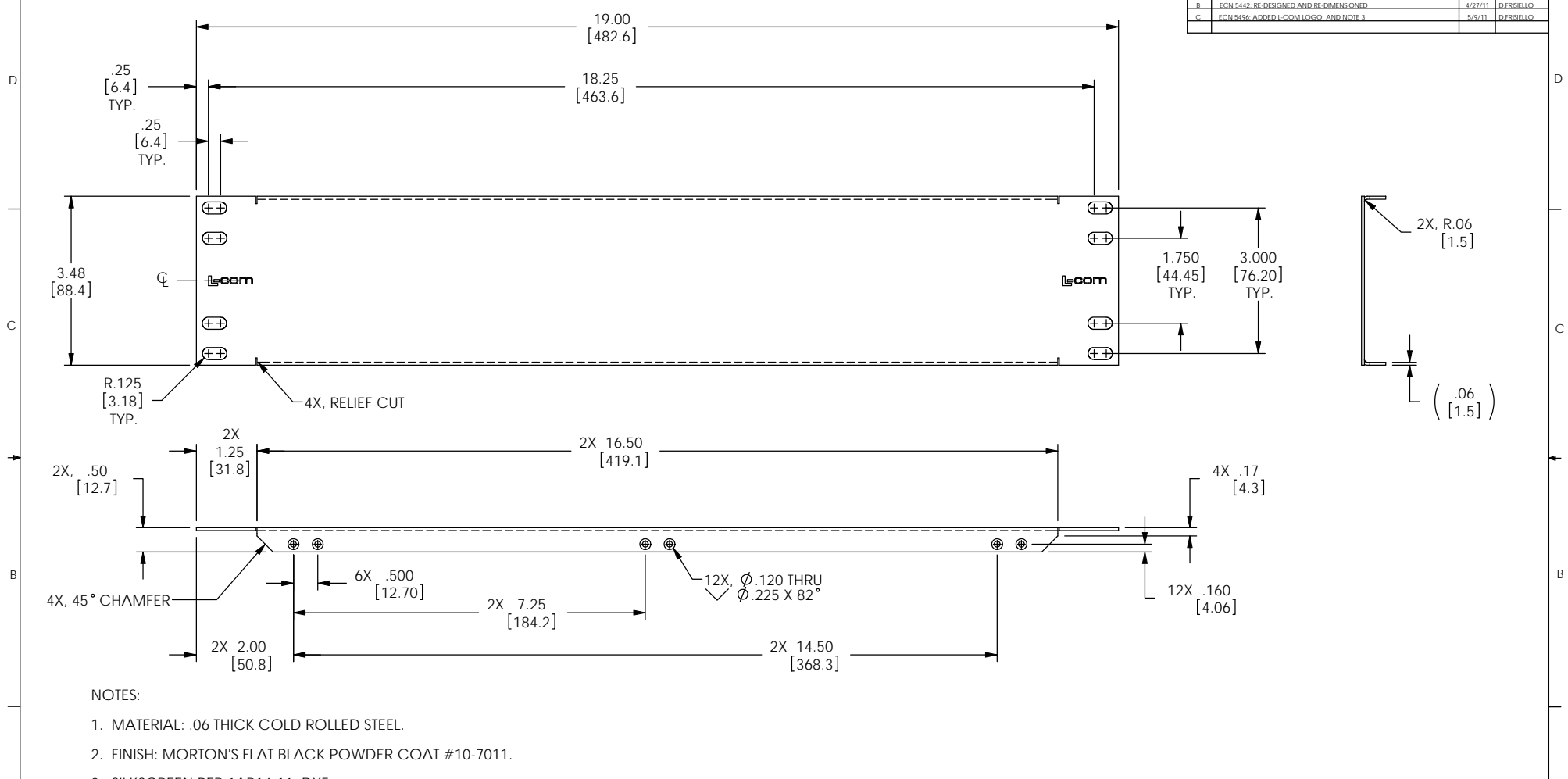


THE INFORMATION CONTAINED IN THIS DRAWING IS THE SOLE PROPERTY OF L-COM, INC. ANY REPRODUCTIONS IN PART OR WHOLE WITHOUT THE WRITTEN PERMISSION OF L-COM, INC. IS PROHIBITED.

REVISIONS			
REV	DESCRIPTION	DATE	CHANGED BY
A	INITIAL RELEASE	12/17/10	D.FRISIELLO
B	ECN 5442-RE-DESIGNED AND RE-DIMENSIONED	4/27/11	D.FRISIELLO
C	ECN 5496- ADDED L-COM LOGO AND NOTE 3	5/9/11	D.FRISIELLO



- NOTES:
1. MATERIAL: .06 THICK COLD ROLLED STEEL.
 2. FINISH: MORTON'S FLAT BLACK POWDER COAT #10-7011.
 3. SILKSCREEN PER 1AP14-11. DXF
 4. ALL INSIDE RADII .031 UNLESS OTHERWISE SPECIFIED.
 5. BREAK ALL SHARP EDGES AND DEBURR ALL HOLES.
 6. ALL DIMENSIONS, TOLERANCES, AND THREAD SIZES ARE AFTER FINISH IS APPLIED.
 7. COMPONENT SHALL BE INDIVIDUALLY PACKAGED IN ACCORDANCE WITH L-COM SPECIFICATION PS-0031.

RoHS Compliant ✓

UNLESS OTHERWISE SPECIFIED, DIMENSIONS ARE IN INCHES (mm)	APPROVALS	DATE
DRAWN BY D.FRISIELLO		4/26/11
CHECKED BY M.MARTINEZ		4/26/11
APPROVED BY M.MARTINEZ		4/26/11
DIMENSIONAL TOLERANCES: .X = ±.1 .XX = ±.01 .XXX = ±.005	CONFIGURATION DETAILS OF UNDIMENSIONED FEATURES MAY VARY	
ANGULAR TOLERANCES: ALL = ± 1°	COLOR VARIATIONS MAY OCCUR	
PROJECTION		

SIZE	PSCM NO.	DWG. NO.	REV.
B	43321	PR35BLK	C

L-com Global Connectivity 45 BEECHWOOD DRIVE NORTH ANDOVER, MA 01845

CATEGORY: **RACK PANEL**

PRODUCT DESCRIPTION: **2U PANEL, BLANK, BLACK**

SCALE: 1:1 CAD FILE: PR35BLK.SLDDRW SHEET 1 OF 1