

Power Supply 120W, 24VDC output



## PS120W24DCDR IOT Data Acquisition

### Features

- DIN Rail mountable, 35 mm
- Universal power input (100 to 240VAC)
- Overvoltage and Overcurrent protection
- LED Indicator

### Applications

- Process control
- Plant automation
- Transportation and traffic system
- Food and Beverage
- Building automation
- Agricultural automation
- Home automation

### Description

L-com's PS120W24DCDR is an industrial power supply that is built for electrical engineers, machine designers, machine builders, process engineers, R&D, and laboratory and testing customers. This power supply comes with a LED indicator that shows which power supplies for your circuit are turned on and has a power supply of 120W. Our power supplies convert power from AC to DC to power devices like PLCs for use in industrial automation applications.

### General Specifications

Type:	DIN RAIL Power Supply, AC-DC
Input Voltage:	100-240 VAC (2.65 A, 50/60 Hz)

### Electrical Specifications

Description	Minimum	Typical	Maximum	Unit
Rated Power		120		W
DC Power Supply Voltage		24		VDC

### Size

Length	4.468 in [113.49 mm]
Width	1.575 in [40.01 mm]
Height	4.929 in [125.2 mm]

### Environmental Specifications

Operating Temperature	-20 to 70 deg C
-----------------------	-----------------

The Infinite Electronics portfolio includes coaxial cable assemblies, connectors, adapters and custom products, as well as our wireless product line which includes antennas, RF amplifiers, lightning and surge protectors, and NEMA rated enclosures.

The information contained in this document is accurate to the best of our knowledge and representative of the part described herein. It may be necessary to Click the following link (or enter part number in "SEARCH" on website) to obtain additional part information including price, inventory and certifications:  
[Power Supply 120W, 24VDC output PS120W24DCDR](#)

Power Supply 120W, 24VDC output

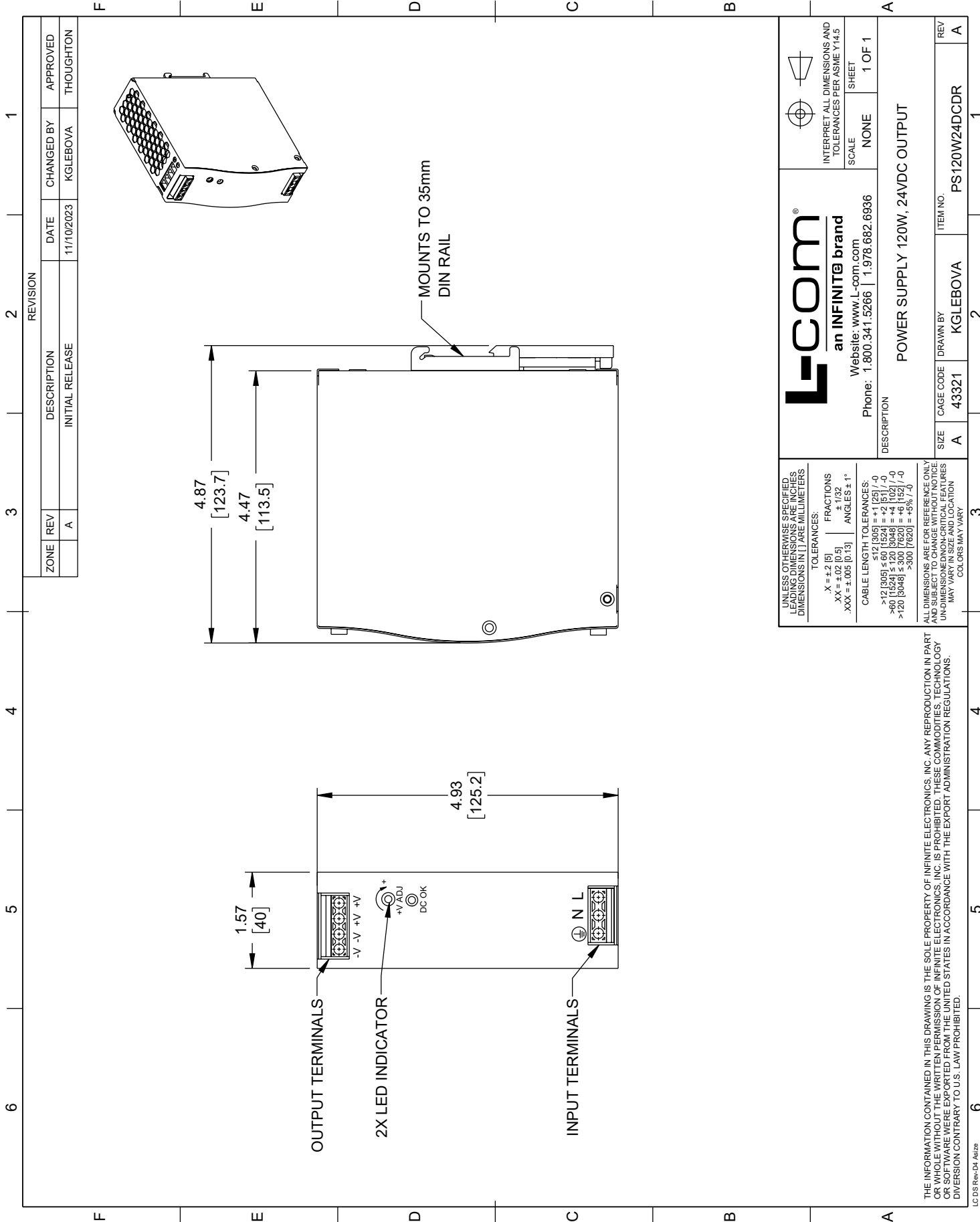
## PS120W24DCDR IOT Data Acquisition



make modifications to the part and/or the documentation of the part, in order to implement improvements. L-com reserves the right to make such changes as required. Unless otherwise stated, all specifications are nominal. L-com does not make any representation or warranty regarding the suitability of the part described herein for any particular purpose, and L-com does not assume any liability arising out of the use of any part or documentation.

# PS120W24DCDR CAD Drawing

Power Supply 120W, 24VDC output



<p><b>L-com</b> an INFINITE brand</p> <p>Website: <a href="http://www.L-com.com">www.L-com.com</a></p> <p>Phone: 1.800.341.5266   1.978.682.6936</p>	<p>INTERPRET ALL DIMENSIONS AND TOLERANCES PER ASME Y14.5</p> <p>SCALE: NONE</p> <p>SHEET: 1 OF 1</p>
	<p>DESCRIPTION: POWER SUPPLY 120W, 24VDC OUTPUT</p>
<p>UNLESS OTHERWISE SPECIFIED, LEAD DIMENSIONS AND DIMENSIONS IN [ ] ARE MILLIMETERS</p> <p>TOLERANCES:</p> <p>X = ±2 [5]      FRACTIONS ± 1/32</p> <p>XX = ±02 [0.5]      ANGLES ± 1°</p> <p>XXX = ±.005 [0.13]</p> <p>CABLE LENGTH TOLERANCES:</p> <p>≤12 [305] ≤60 [1524] = +1 [25] / -0</p> <p>&gt;60 [1524] ≤120 [3048] = +4 [102] / -0</p> <p>&gt;120 [3048] ≤300 [7620] = +5% / -0</p>	<p>ITEM NO. PS120W24DCDR</p> <p>REV A</p>

ALL DIMENSIONS ARE FOR REFERENCE ONLY AND SUBJECT TO CHANGE WITHOUT NOTICE. DIMENSIONS ON CRITICAL FEATURES MAY VARY IN SIZE AND LOCATION. COLORS MAY VARY.

THE INFORMATION CONTAINED IN THIS DRAWING IS THE SOLE PROPERTY OF INFINITE ELECTRONICS, INC. ANY REPRODUCTION IN PART OR WHOLE WITHOUT THE WRITTEN PERMISSION OF INFINITE ELECTRONICS, INC. IS PROHIBITED. THESE COMMODITIES, TECHNOLOGY OR SOFTWARE WERE EXPORTED FROM THE UNITED STATES IN ACCORDANCE WITH THE EXPORT ADMINISTRATION REGULATIONS. DIVERSION CONTRARY TO U.S. LAW PROHIBITED.