

Power Supply 30W, 12VDC output



PS30W12DCDR IOT Data Acquisition

Features

- DIN Rail mountable, 35 mm
- Universal power input (100 to 240VAC)
- Overvoltage and Overcurrent protection
- LED Indicator

Applications

- Process control
- Plant automation
- Transportation and traffic system
- Food and Beverage
- Building automation
- Agricultural automation
- Home automation

Description

L-com's PS30W12DCDR is an industrial power supply that is built for electrical engineers, machine designers, machine builders, process engineers, R&D, and laboratory and testing customers. This power supply comes with a LED indicator that shows which power supplies for your circuit are turned on and has a power supply of 30W. Our power supplies convert power from AC to DC to power devices like PLCs for use in industrial automation applications.

General Specifications

Type: DIN RAIL Power Supply, AC-DC
Input Voltage: 100-240 VAC (0.9 A, 50/60 Hz)

Electrical Specifications

Description	Minimum	Typical	Maximum	Unit
Rated Power		30		W
DC Power Supply Voltage		12		VDC

Size

Length: 3.937 in [100 mm]
Width: 1.575 in [40.01 mm]
Height: 3.543 in [89.99 mm]

Environmental Specifications

Operating Temperature: -20 to 70 deg C

The Infinite Electronics portfolio includes coaxial cable assemblies, connectors, adapters and custom products, as well as our wireless product line which includes antennas, RF amplifiers, lightning and surge protectors, and NEMA rated enclosures.

The information contained in this document is accurate to the best of our knowledge and representative of the part described herein. It may be necessary to Click the following link (or enter part number in "SEARCH" on website) to obtain additional part information including price, inventory and certifications: [Power Supply 30W, 12VDC output PS30W12DCDR](#)

Power Supply 30W, 12VDC output

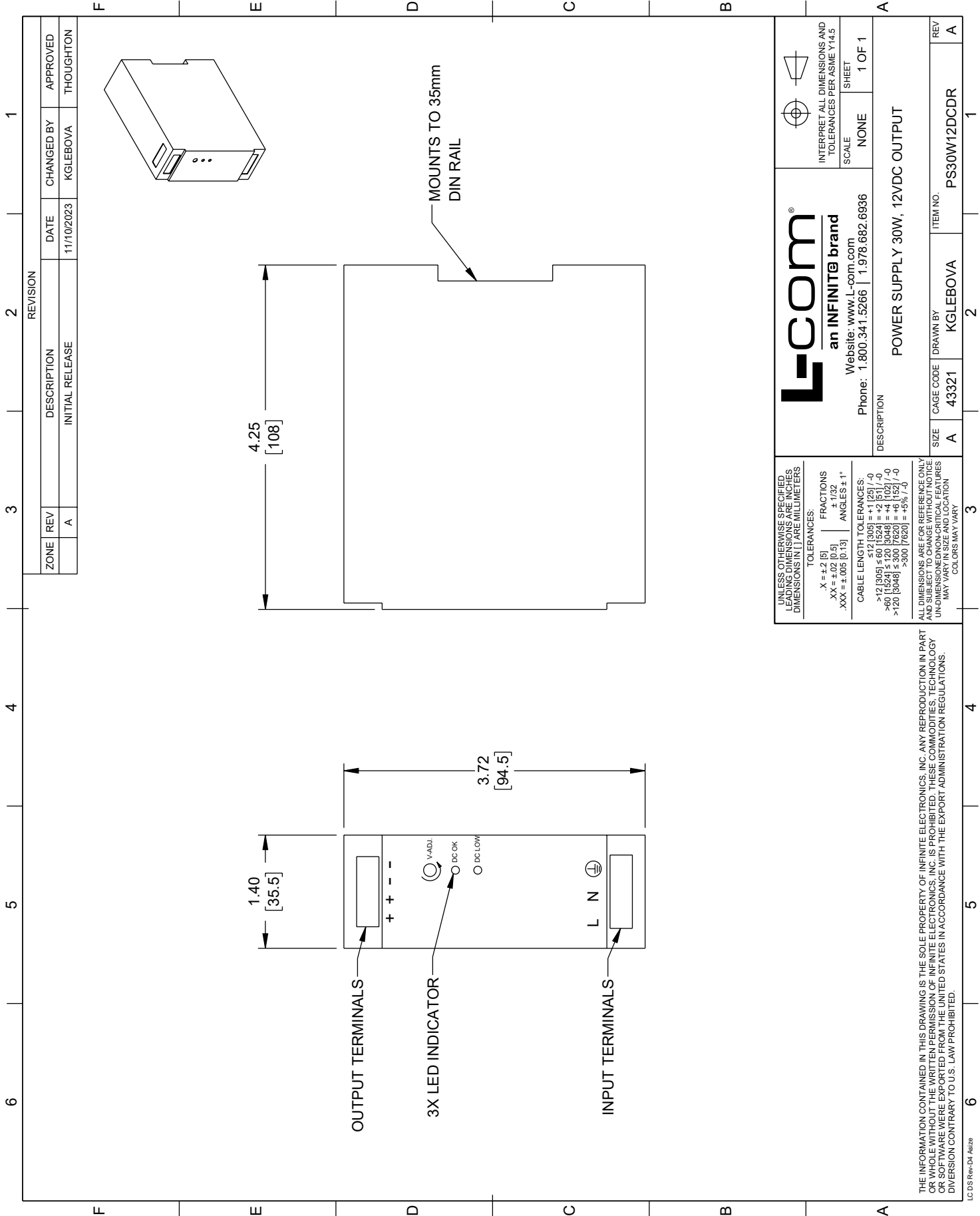
PS30W12DCDR IOT Data Acquisition



make modifications to the part and/or the documentation of the part, in order to implement improvements. L-com reserves the right to make such changes as required. Unless otherwise stated, all specifications are nominal. L-com does not make any representation or warranty regarding the suitability of the part described herein for any particular purpose, and L-com does not assume any liability arising out of the use of any part or documentation.

PS30W12DCDR CAD Drawing

Power Supply 30W, 12VDC output



 an INFINITE brand Website: www.L-com.com		INTERPRET ALL DIMENSIONS AND TOLERANCES PER ASME Y14.5
Phone: 1.800.341.5266 1.978.682.6936	SCALE: NONE	SHEET: 1 OF 1
DESCRIPTION: POWER SUPPLY 30W, 12VDC OUTPUT		
SIZE: A	CAGE CODE: 43321	DRAWN BY: KGLEBOVA
		ITEM NO.: PS30W12DCDR
		REV: A

UNLESS OTHERWISE SPECIFIED, LEAD DIMENSIONS AND DIMENSIONS IN [] ARE MILLIMETERS

TOLERANCES:

X = ± 0.2 [5] FRACTIONS ± 1/32

XX = ± 0.02 [0.5] ANGLES ± 1°

XXX = ± 0.005 [0.13]

CABLE LENGTH TOLERANCES:

≤ 12 [305] ± 0.1 [25] / -0

> 12 [305] ≤ 60 [1524] ± 0.2 [51] / -0

> 60 [1524] ≤ 120 [3048] ± 0.4 [102] / -0

> 120 [3048] ≤ 300 [7620] ± 0.8 [203] / -0

> 300 [7620] ± 1.6 [406] / -0

ALL DIMENSIONS ARE FOR REFERENCE ONLY. DIMENSIONS ON THE DRAWING TAKE PRECEDENCE OVER THE PART NAME. UNLESS OTHERWISE SPECIFIED, DIMENSIONS MAY VARY IN SIZE AND LOCATION. COLORS MAY VARY.

THE INFORMATION CONTAINED IN THIS DRAWING IS THE SOLE PROPERTY OF INFINITE ELECTRONICS, INC. ANY REPRODUCTION IN PART OR WHOLE WITHOUT THE WRITTEN PERMISSION OF INFINITE ELECTRONICS, INC. IS PROHIBITED. THESE COMMODITIES, TECHNOLOGY OR SOFTWARE WERE EXPORTED FROM THE UNITED STATES IN ACCORDANCE WITH THE EXPORT ADMINISTRATION REGULATIONS. DIVERSION CONTRARY TO U.S. LAW PROHIBITED.