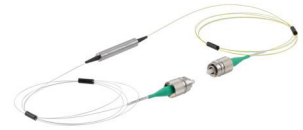


Passive SM Dual Stage Isolator, Grade P, 1550nm,
1 meter 250um bare fiber, FC/APC, narrow key



PSMDI-P55-121

Features

- Single Mode fiber
- polarization independent
- Dual Stage, grade P
- 1 meter, FC/APC, narrow key connectors
- Low insertion loss
- High isolation
- Low PDL
- High stability and reliability

Applications

- Optical Amplifier
- Communication Networks
- Fiber Sensors
- Coherent Dedection
- Research and Development
- Power Monitoring

Description

Elevate the performance of your optical systems with the L-com PSMDI-P55-121, a passive polarization independent isolator with single-mode fiber engineered for precision and excellence. Categorized as a grade P (Premium) Dual Stage isolator, it is the ideal choice for protecting light sources from back reflections and signal noise, ensuring consistent and dependable results in your optical systems. With its compact 35mm size and a wavelength of 1550nm, this isolator delivers the critical specifications required for demanding optical tasks.

L-com's PSMDI-P55-121 isolator arrives with FC/APC, narrow key connectors at both ends, offering flexibility in your optical configuration. Additionally, its 250um bare fiber facilitates seamless integration into various setups.

The L-com PSMDI-P55-121 boasts essential features, including low insertion loss, high isolation, low PDL (Polarization-Dependent Loss), and outstanding stability and reliability. Collectively, these features ensure that your optical systems consistently operate at their peak, with minimal signal loss, precise signal separation, and reliable performance over time.

Whether your focus is on optical amplification, communication networks, fiber sensing, coherent detection, research and development, or power monitoring, L-com's PSMDI-P55-121 stands as your trusted partner. Its versatility and quality position it as the top choice for professionals seeking precision and excellence in single-mode polarization independent optical isolators.

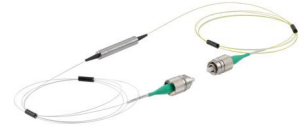
Experience the full potential of your optical projects and systems with the L-com PSMDI-P55-121. It empowers you to achieve superior results, setting the highest standards for performance, stability, and reliability in your single-mode optical endeavors. Rely on its capabilities to enhance and optimize your optical setups for outstanding outcomes. Other configurations are available upon request, if you do not see the configuration, you are looking for, please contact our expert technical support.

Configuration

Polish	APC
Mode	Single Mode
Module Function	Isolator
Fiber Type	250um bare fiber
Fiber Diameter	250um
Package	5.5x35mm
Stage	Dual Stage
Grade	Grade P

Click the following link (or enter part number in "SEARCH" on website) to obtain additional part information including price, inventory and certifications:
[Passive SM Dual Stage Isolator, Grade P, 1550nm, 1 meter 250um bare fiber, FC/APC, narrow key PSMDI-P55-121](#)

Passive SM Dual Stage Isolator, Grade P, 1550nm,
1 meter 250um bare fiber, FC/APC, narrow key



PSMDI-P55-121

Filter Specifications

Description	Minimum	Typical	Maximum	Units
Operating Wavelength	1530	1550	1570	nm
Insertion Loss		0.9	1	dB
Return Loss	50			dB
PDL			0.15	dB
Isolation	45	55		dB
Optical Power			300	mW

Size

Length	39.37 in [100 cm]
Weight	0.25 lbs [113.4 g]

Environmental Specifications

Temperature

Operating Range	-5 to +70 deg C
Storage Range	-40 to +85 deg C

Compliance Certifications (see [product page](#) for current document)

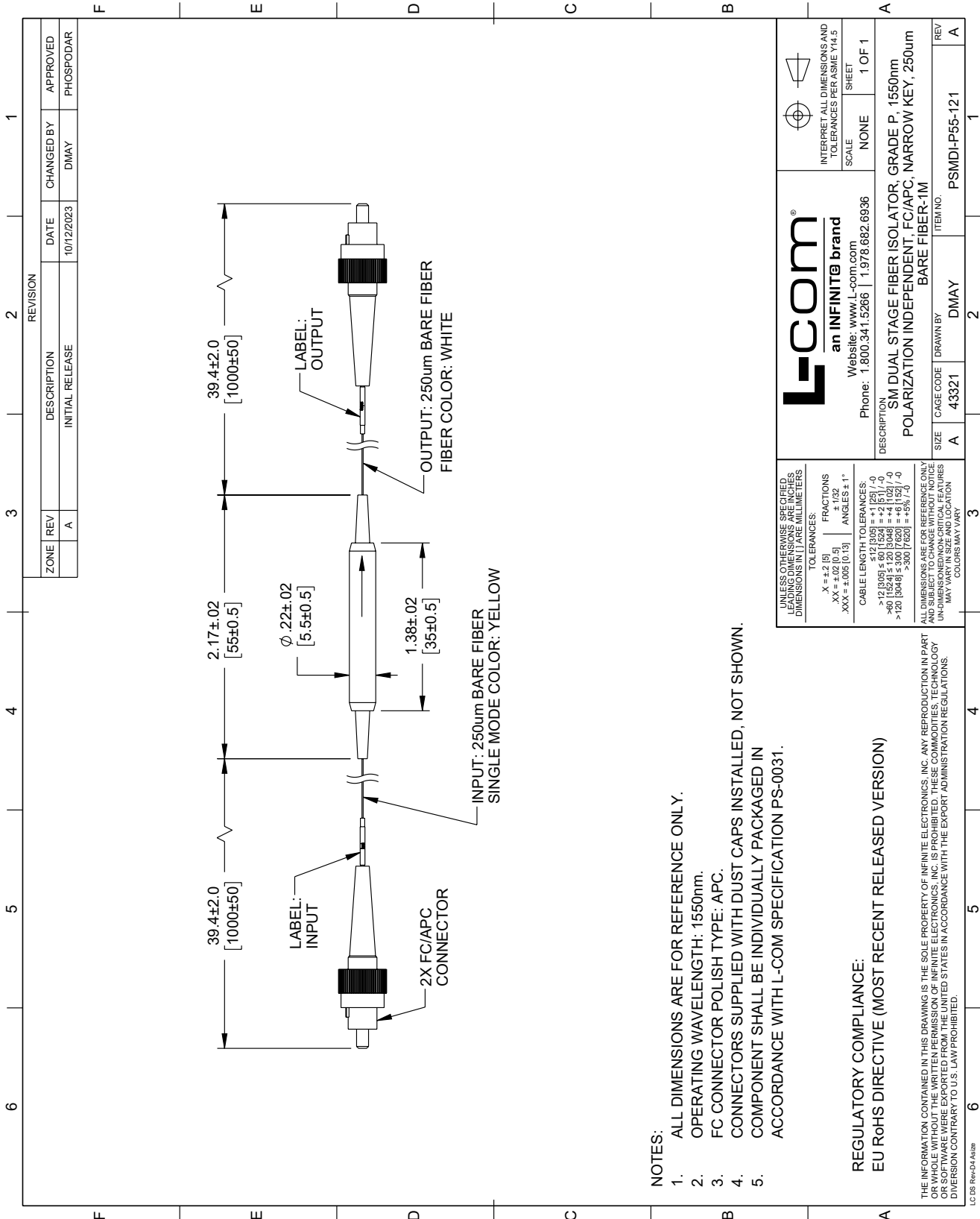
Plotted and Other Data

Notes:

Passive SM Dual Stage Isolator, Grade P, 1550nm, 1 meter 250um bare fiber, FC/APC, narrow key from L-com has same day shipment for domestic and International orders. Our portfolio includes coaxial cable assemblies, connectors, adapters and custom products as well as lightning and surge protectors, NEMA rated enclosures, and an RF product line which includes antennas, amplifiers, passive, and active components.

The information contained within this document is accurate to the best of our knowledge and representative of the part described herein. It may be necessary to make modifications to the part and/or the documentation of the part in order to impliment improvements. L-com reserves the right to make such changes as required. Unless otherwise stated, all specifications are nominal. L-com does not make any representation or warranty regarding the suitability of the part described herein for any particular purpose, and L-com does not assume liability arising out of the use of any part or document.

PSMDI-P55-121 CAD Drawing



- NOTES:
1. ALL DIMENSIONS ARE FOR REFERENCE ONLY.
 2. OPERATING WAVELENGTH: 1550nm.
 3. FC CONNECTOR POLISH TYPE: APC.
 4. CONNECTORS SUPPLIED WITH DUST CAPS INSTALLED, NOT SHOWN.
 5. COMPONENT SHALL BE INDIVIDUALLY PACKAGED IN ACCORDANCE WITH L-COM SPECIFICATION PS-0031.