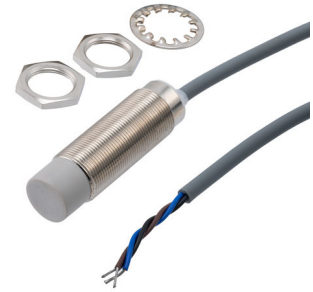


Inductive Proximity Sensor, cylindrical, M18 threaded, non-shielded, Ni-Cu alloy, NPN NO, sensing distance 16mm, 2m 3-wire cable



PXINDTLN18-16NO

Inductive Proximity Sensor

Features

- Fast response
- Corrosion resistant housings
- Immunity to wet and/or dusty conditions
- Short-circuit protection
- IP67 protection

Applications

- Industrial Automation
- Automotive
- Materials production
- Warehouse automation
- Food & Beverage

Description

The L-com PXINDTLN18-16NO is a proximity sensor, which is used in countless IoT and industrial automation applications. This inductive proximity IOT sensor is designed in a cylindrical shape and is suitable for the materials production, warehouse automation, automotive, food, and beverage industries. Our IP67 sensor has a sensing distance of 16.00 mm, which allows users to count, inspect objects, and detect their presence and position without physical contact. This proximity sensor is made of corrosion resistant nickel copper alloy and has a tough IP67 housing.

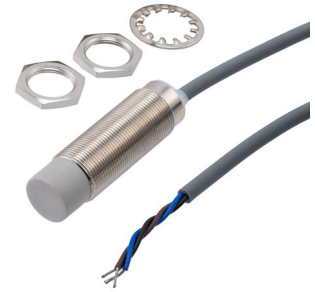
General Specifications

Design Type	Cylindrical
Output Type	NPN
Sensing Distance	16 mm
Supply Voltage	10-30 VDC
Repeat Accuracy	1 %
Hysteresis	15 %
IP Rating	IP67
Housing Material	Nickel Copper Alloy
Housing Size	M18
Protective Circuit	Short Circuit
Connection Method	2M 3-wire Cable
Leakage Current	0.01 mA
Load Current	150 mA
Voltage Drop	2 V
Mounting	With M18 nuts, tightening torque 28Nm

(For more information please consult User Manual)

Click the following link (or enter part number in "SEARCH" on website) to obtain additional part information including price, inventory and certifications:
[Inductive Proximity Sensor, cylindrical, M18 threaded, non-shielded, Ni-Cu alloy, NPN NO, sensing distance 16mm, 2m 3-wire cable PXINDTLN18-16NO](#)

Inductive Proximity Sensor, cylindrical, M18 threaded, non-shielded, Ni-Cu alloy, NPN NO, sensing distance 16mm, 2m 3-wire cable



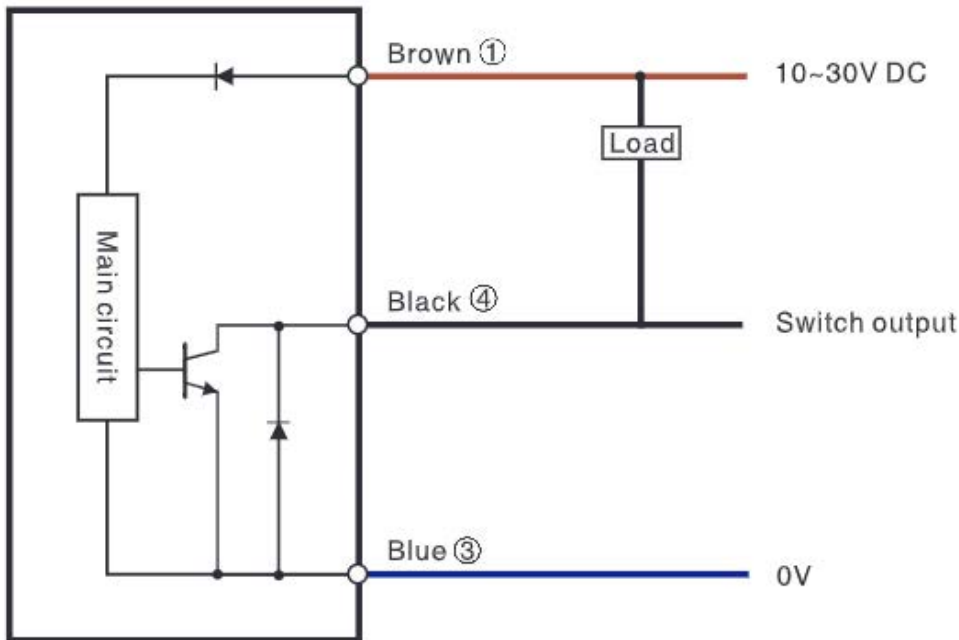
PXINDTLN18-16NO

Inductive Proximity Sensor

Circuit Diagram

DC 3-Wire

NPN Output



Environmental Specifications

Temperature

Operating Range

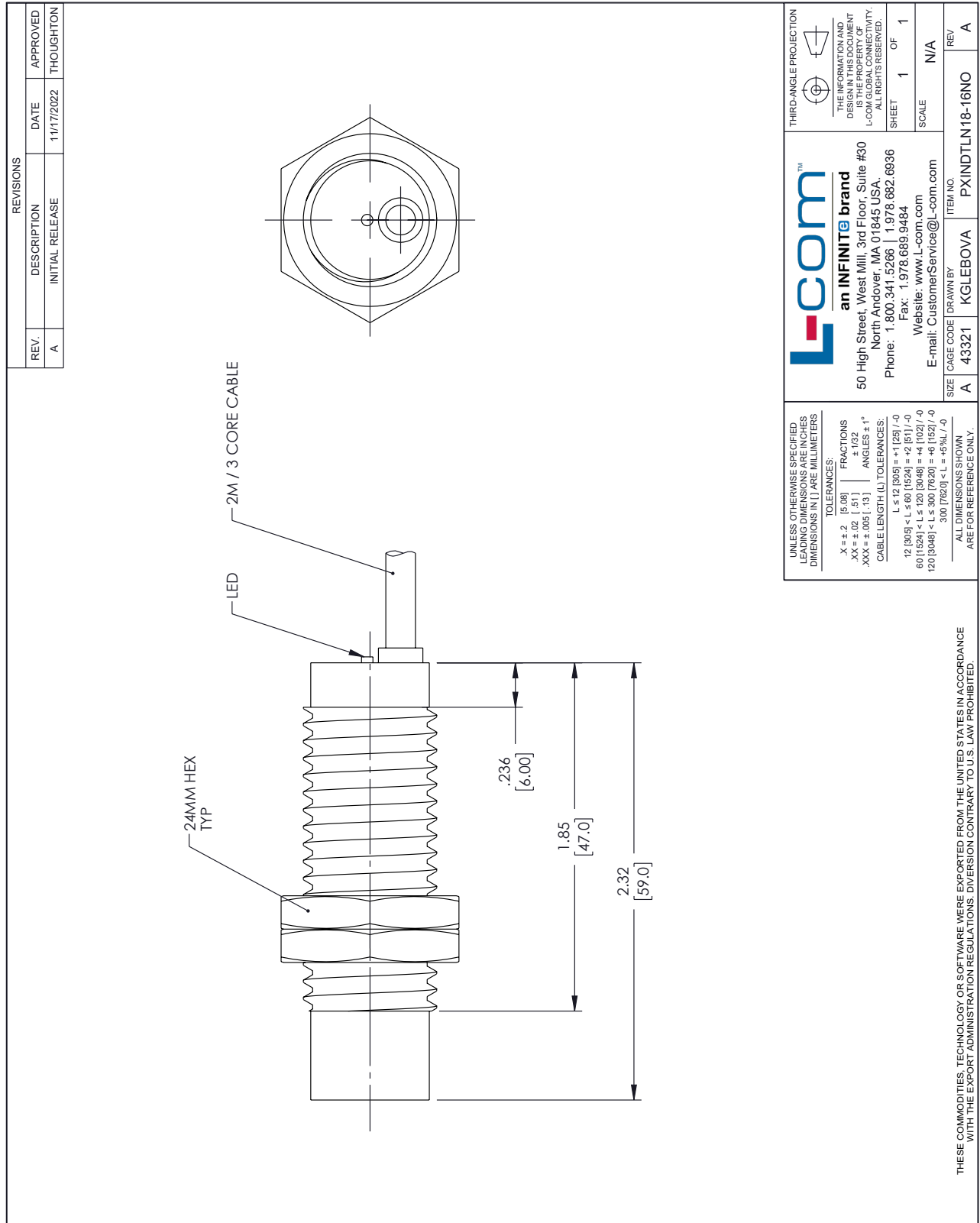
-25 to +75 deg C

Inductive Proximity Sensor, cylindrical, M18 threaded, non-shielded, Ni-Cu alloy, NPN NO, sensing distance 16mm, 2m 3-wire cable from L-com has same day shipment for domestic and International orders. Our portfolio includes coaxial cable assemblies, connectors, adapters and custom products as well as lightning and surge protectors, NEMA rated enclosures, and an RF product line which includes antennas, amplifiers, passive, and active components.

The information contained within this document is accurate to the best of our knowledge and representative of the part described herein. It may be necessary to make modifications to the part and/or the documentation of the part in order to implement improvements. L-com reserves the right to make such changes as required. Unless otherwise stated, all specifications are nominal. L-com does not make any representation or warranty regarding the suitability of the part described herein for any particular purpose, and L-com does not assume liability arising out of the use of any part or document.

Inductive Proximity Sensor, cylindrical, M18 threaded, non-shielded, Ni-Cu alloy, NPN NO, sensing distance 16mm, 2m 3-wire cable

L-com CAD Drawing



REVISIONS		
REV.	DESCRIPTION	DATE
A	INITIAL RELEASE	11/17/2022
		APPROVED
		THOUGHTON

<p>UNLESS OTHERWISE SPECIFIED LEADING DIMENSIONS ARE IN INCHES DIMENSIONS IN [] ARE MILLIMETERS</p> <p>TOLERANCES:</p> <p>.X = ±.2 [5.08] FRACTIONS ± 1/32 .XX = ±.02 [.51] ANGLES ± 1° .XXX = ±.005 [.13]</p> <p>CABLE LENGTH (L) TOLERANCES:</p> <p>L ≤ 12 [305] = +1 [25] / -0 12 [305] < L ≤ 60 [1524] = +2 [51] / -0 60 [1524] < L ≤ 120 [3048] = +4 [102] / -0 120 [3048] < L ≤ 300 [7620] = +6 [152] / -0 300 [7620] < L = +5% / -0</p> <p>ALL DIMENSIONS SHOWN ARE FOR REFERENCE ONLY.</p>	<p>THIRD-ANGLE PROJECTION</p> <p>THE INFORMATION AND DIMENSIONS ON THIS DRAWING IS THE PROPERTY OF L-COM GLOBAL CONNECTIVITY. ALL RIGHTS RESERVED.</p> <p>SHEET 1 OF 1</p> <p>SCALE N/A</p>
	<p>ITEM NO. PXINDTLN18-16NO</p> <p>REV A</p>

L-comTM
an INFINITE brand
 50 High Street, West Mill, 3rd Floor, Suite #30
 North Andover, MA 01845, USA.
 Phone: 1.800.341.5266 | 1.978.682.6936
 Fax: 1.978.689.9484
 Website: www.L-com.com
 E-mail: CustomerService@L-com.com

THESE COMMODITIES, TECHNOLOGY OR SOFTWARE WERE EXPORTED FROM THE UNITED STATES IN ACCORDANCE WITH THE EXPORT ADMINISTRATION REGULATIONS. DIVERSION CONTRARY TO U.S. LAW PROHIBITED.