

Photoelectric Sensor, M12 x 60mm, NPN NC,
Diffuse Reflection 0.2 meter Range, 2 meter
3-wire Cable, IP67, Brass



PXPEM12-NHX2

Features

- Specialized IC
- IP67 Protection
- Easy Installation
- Wide Selection of Output Options
- Steady Performance
- Broad Detection Range

Applications

- Industrial Automation
- Automotive
- Manufacturing
- Food and Beverage
- Warehouse Automation
- Robotics

Description

The L-com PXPEM12-NHX2 is a photoelectric proximity sensor designed to determine the proximity, absence, or presence of an item using a light transmitter. This photoelectric sensor offers a quick response NPN NC output via a 2 meter 3-wire cable for connection. This IoT sensor has stable performance due to a specialized integrated circuit. Make your online purchase right now to take advantage of our same-day shipping.

Our IoT sensor is constructed of M12 nickel-plated brass housing. The M12 x 60mm threaded diffuse photoelectric proximity sensor has a NPN NC electrical connection and is used for the direct detection of objects. This photoelectric proximity sensor has a 0.2 meter sensing distance. Our photoelectric sensor is 12 mm in diameter and has a threaded barrel for easy installation and adjustment.

Our PXPEM12-NHX2 IoT sensor is IP67 protected and has a 2 meter 3-wire connecting cable. This M12 x 60mm threaded photoelectric proximity sensor requires a power supply voltage of 10 to 36 VDC. The photoelectric sensor has reliable performance making it suitable for warehouse and industrial automation, manufacturing, and food and beverage industries. This NPN NC IoT sensor with a 2 meter 3-wire connecting cable has a fast response time, which allows it to detect small objects.

L-com has the largest in-stock selection of IP67-rated photoelectric proximity sensors with same-day shipping for domestic and international orders. We currently have a variety of IoT products in our portfolio that are ready to ship today. For further information on similar products, our expert technical support and knowledgeable sales team can help you get a high-quality photoelectric sensor with NPN NC output as per your requirements.

General Specifications

| | |
|-------------------|---------------------|
| Sensing Type | Diffuse Reflection |
| Design Type | M12 |
| Output Type | NPN |
| Sensing Distance | 10 to 200 mm |
| Supply Voltage | 10-36 VDC |
| Hysteresis | 15 % |
| IP Rating | IP67 |
| Housing Material | Brass Nickel Plated |
| Connection Method | 2M 3-wire cable |

Environmental Specifications

| | |
|--------------------|----------------|
| Temperature | |
| Operating Range | 0 to +55 deg C |

Photoelectric Sensor, M12 x 60mm, NPN NC,
Diffuse Reflection 0.2 meter Range, 2 meter
3-wire Cable, IP67, Brass



PXPEM12-NHX2

Compliance Certifications (see [product page](#) for current document)

Plotted and Other Data

Notes:

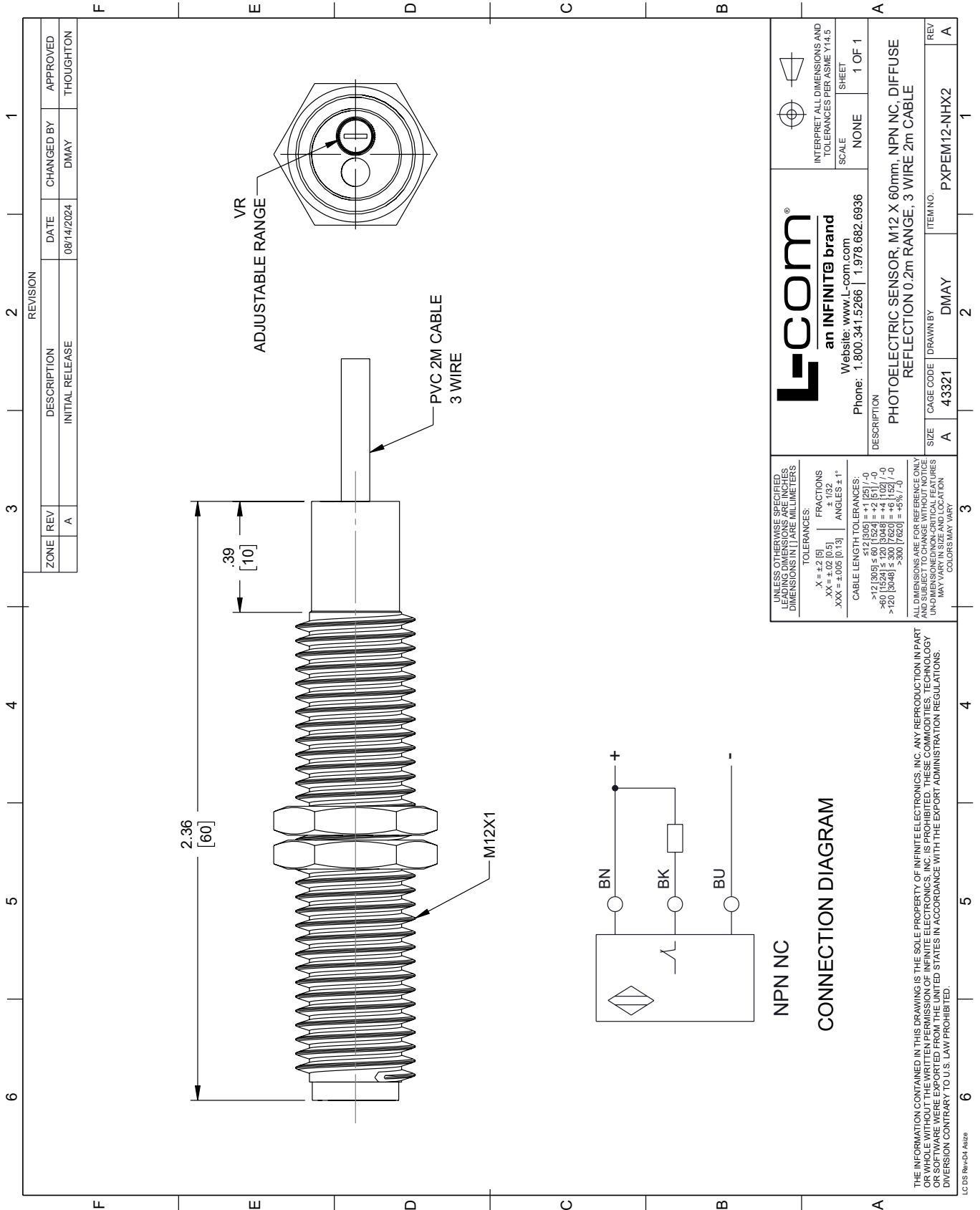
Photoelectric Sensor, M12 x 60mm, NPN NC, Diffuse Reflection 0.2 meter Range, 2 meter 3-wire Cable, IP67, Brass from L-com has same day shipment for domestic and International orders. Our portfolio includes coaxial cable assemblies, connectors, adapters and custom products as well as lightning and surge protectors, NEMA rated enclosures, and an RF product line which includes antennas, amplifiers, passive, and active components.

URL: <https://www.l-com.com/photoelectric-sensor-m12-x-60mm-npn-nc-diffuse-reflection-0.2-meter-range-2-meter-3-wire-cable-ip67-brass-pxpem12-nhx2-p.aspx>

The information contained within this document is accurate to the best of our knowledge and representative of the part described herein. It may be necessary to make modifications to the part and/or the documentation of the part in order to implement improvements. L-com reserves the right to make such changes as required. Unless otherwise stated, all specifications are nominal. L-com does not make any representation or warranty regarding the suitability of the part described herein for any particular purpose, and L-com does not assume liability arising out of the use of any part or document.

PXPEM12-NHX2 CAD Drawing

Photoelectric Sensor, M12 x 60mm, NPN NC, Diffuse Reflection
0.2 meter Range, 2 meter 3-wire Cable, IP67, Brass



| REVISION | | DATE | CHANGED BY | APPROVED |
|----------|-----|-------------|-----------------|-----------|
| ZONE | REV | DESCRIPTION | INITIAL RELEASE | THOUGHTON |
| | A | | | |

| DATE | DESCRIPTION | ITEM NO. |
|------------|-----------------|--------------|
| 08/14/2024 | INITIAL RELEASE | PXPEM12-NHX2 |

| UNLESS OTHERWISE SPECIFIED, LEADING DIMENSIONS ARE IN INCHES. DIMENSIONS IN [] ARE MILLIMETERS. | INTERPRET ALL DIMENSIONS AND TOLERANCES PER ASME Y14.5 |
|--|--|
| <p>TOLERANCES:</p> <p>X = ±.2 [5] FRACTIONS ± 1/32</p> <p>.XX = ±.02 [0.5] ANGLES ± 1°</p> <p>.XXX = ±.005 [0.13]</p> <p>CABLE LENGTH TOLERANCES:</p> <p>>12 [305] ≤ 60 [1524] = ±.1 [25] / -0</p> <p>>60 [1524] ≤ 120 [3048] = ±.4 [102] / -0</p> <p>>120 [3048] ≤ 300 [7620] = ±.6 [152] / -0</p> | <p>SCALE: NONE</p> <p>SHEET: 1 OF 1</p> |
| <p>ALL DIMENSIONS ARE FOR REFERENCE ONLY. UNDIMENSIONED/NON-CRITICAL FEATURES MAY VARY IN SIZE AND LOCATION. COLORS MAY VARY.</p> | <p>Website: www.L-com.com</p> <p>Phone: 1.800.341.5266 1.978.682.6936</p> |
| <p>THE INFORMATION CONTAINED IN THIS DRAWING IS THE SOLE PROPERTY OF INFINITE ELECTRONICS, INC. ANY REPRODUCTION IN PART OR WHOLE WITHOUT THE WRITTEN PERMISSION OF INFINITE ELECTRONICS, INC. IS PROHIBITED. THESE COMMODITIES, TECHNOLOGY OR SERVICES ARE EXPORTED FROM THE UNITED STATES IN ACCORDANCE WITH THE EXPORT ADMINISTRATION REGULATIONS. DIVERSION CONTRARY TO U.S. LAW PROHIBITED.</p> | <p>DESCRIPTION: PHOTOELECTRIC SENSOR, M12 X 60mm, NPN NC, DIFFUSE REFLECTION 0.2m RANGE, 3 WIRE 2m CABLE</p> |
| <p>SIZE: A</p> <p>CAGE CODE: 43321</p> <p>DRAWN BY: DMAY</p> | <p>REV: A</p> |