

Photoelectric Sensor, M12 x 60mm, NPN
NO+NC, Diffuse Reflection 0.2 meter Range,
2 meter 4-wire Cable, IP67, Brass



PXPEM12-NKHX2

Features

- Specialized IC
- IP67 Protection
- Easy Installation
- Wide Selection of Output Options
- Steady Performance
- Broad Detection Range

Applications

- Industrial Automation
- Automotive
- Manufacturing
- Food and Beverage
- Warehouse Automation
- Robotics

Description

The L-com PXPEM12-NKHX2 is a photoelectric proximity sensor designed to determine the proximity, absence, or presence of an item using a light transmitter. Our M12 x 60mm threaded diffuse photoelectric proximity sensor has a NPN NO+NC electrical connection and is used for the direct detection of objects. This photoelectric proximity sensor has a 0.2 meter sensing distance. Make your online purchase right now to take advantage of our same-day shipping.

This photoelectric sensor offers a quick response NPN NO+NC output via a 2 meter 4-wire cable for connection. Our IoT sensor is constructed of M12 nickel-plated brass housing. This M12 x 60mm threaded photoelectric proximity sensor requires a power supply voltage of 10 to 36 VDC. Our photoelectric sensor is 12 mm in diameter and has a threaded barrel for easy installation and adjustment.

Our PXPEM12-NKHX2 IoT sensor is IP67 protected and has a 2 meter 4-wire connecting cable. This IoT sensor has stable performance due to a specialized integrated circuit. The photoelectric sensor has reliable performance making it suitable for warehouse and industrial automation, manufacturing, and food and beverage industries. This NPN NO+NC IoT sensor with a 2 meter 4-wire connecting cable has a fast response time, which allows it to detect small objects

L-com has the largest in-stock selection of IP67-rated photoelectric proximity sensors with same-day shipping for domestic and international orders. We currently have a variety of IoT products in our portfolio that are ready to ship today. For further information on similar products, our expert technical support and knowledgeable sales team can help you get a high-quality photoelectric sensor with NPN NO+NC output as per your requirements.

General Specifications

Sensing Type	Diffuse Reflection
Design Type	M12
Output Type	NPN
Sensing Distance	10 to 300 mm
Supply Voltage	10-36 VDC
Hysteresis	15 %
IP Rating	IP67
Housing Material	Brass Nickel Plated
Connection Method	2M 4-wire cable

Environmental Specifications

Temperature	
Operating Range	0 to +55 deg C

Photoelectric Sensor, M12 x 60mm, NPN
NO+NC, Diffuse Reflection 0.2 meter Range,
2 meter 4-wire Cable, IP67, Brass



PXPEM12-NKHX2

Compliance Certifications (see [product page](#) for current document)

Plotted and Other Data

Notes:

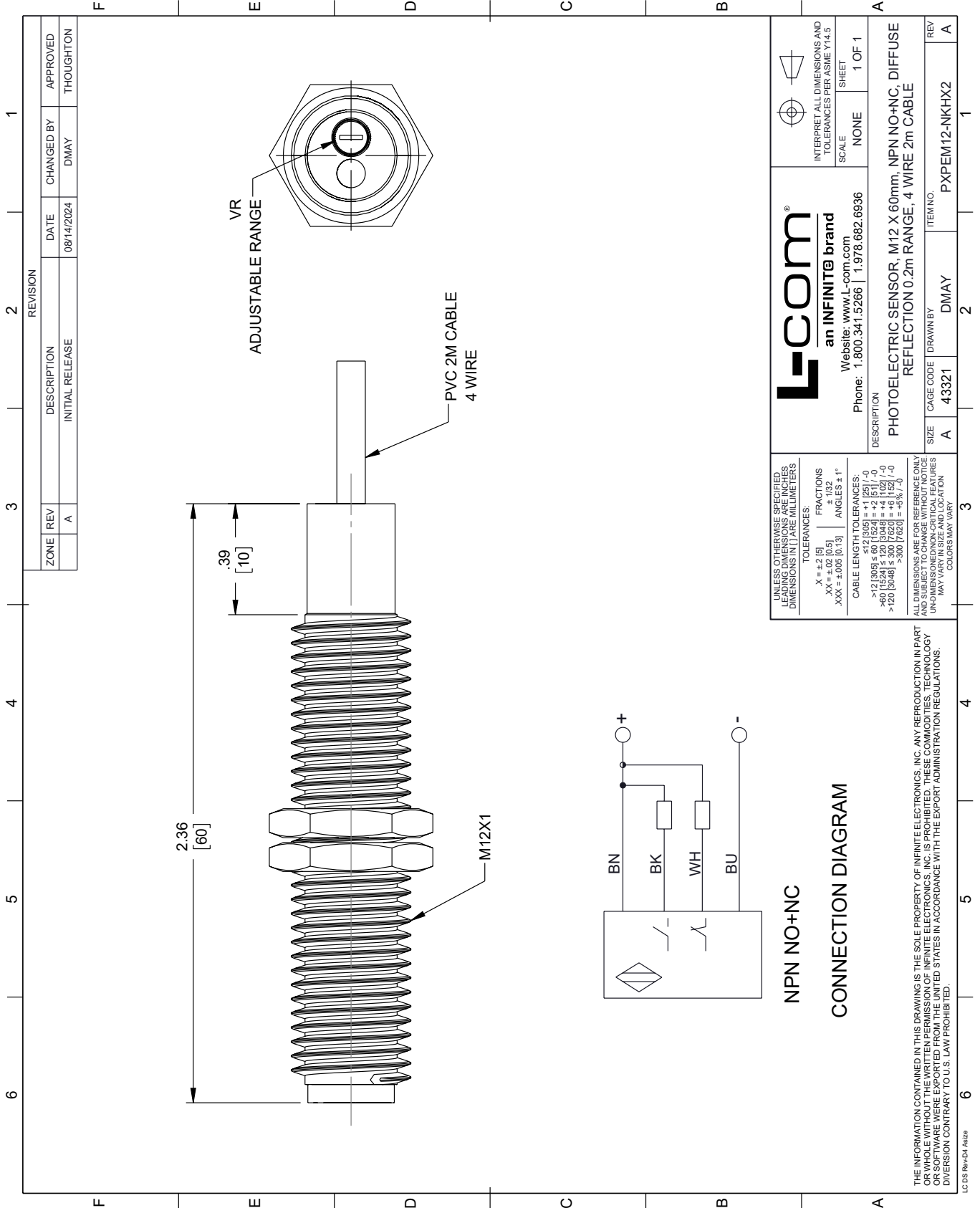
Photoelectric Sensor, M12 x 60mm, NPN NO+NC, Diffuse Reflection 0.2 meter Range, 2 meter 4-wire Cable, IP67, Brass from L-com has same day shipment for domestic and International orders. Our portfolio includes coaxial cable assemblies, connectors, adapters and custom products as well as lightning and surge protectors, NEMA rated enclosures, and an RF product line which includes antennas, amplifiers, passive, and active components.

URL: <https://www.l-com.com/photoelectric-sensor-m12-x-60mm-npn-no-plus-nc-diffuse-reflection-0.2-meter-range-2-meter-4-wire-cable-ip67-brass-pxpem12-nkhx2-p.aspx>

The information contained within this document is accurate to the best of our knowledge and representative of the part described herein. It may be necessary to make modifications to the part and/or the documentation of the part in order to implement improvements. L-com reserves the right to make such changes as required. Unless otherwise stated, all specifications are nominal. L-com does not make any representation or warranty regarding the suitability of the part described herein for any particular purpose, and L-com does not assume liability arising out of the use of any part or document.

PXPEM12-NKHX2 CAD Drawing

Photoelectric Sensor, M12 x 60mm, NPN NO+NC, Diffuse Reflection
0.2 meter Range, 2 meter 4-wire Cable, IP67, Brass



REVISION		DATE	CHANGED BY	APPROVED
ZONE	REV			
	A	08/14/2024	DMAY	THOUGHTON
DESCRIPTION				
INITIAL RELEASE				

 an INFINITE brand Website: www.L-com.com Phone: 1.800.341.5266 1.978.682.6936		INTERPRET ALL DIMENSIONS AND TOLERANCES PER ASME Y14.5 SCALE: NONE SHEET: 1 OF 1
DESCRIPTION: PHOTOELECTRIC SENSOR, M12 X 60mm, NPN NO+NC, DIFFUSE REFLECTION 0.2m RANGE, 4 WIRE 2m CABLE		
SIZE: A	CAGE CODE: 43321	ITEM NO: PXPEM12-NKHX2
DRAWN BY: DMAY	REV: A	

UNLESS OTHERWISE SPECIFIED, LEADING DIMENSIONS ARE IN INCHES. DIMENSIONS IN [] ARE MILLIMETERS.

TOLERANCES:
 .X = ±.2 [5]
 .XX = ±.02 [0.5]
 .XXX = ±.005 [0.13]
 FRACTIONS ± 1/32
 ANGLES ± 1°

CABLE LENGTH TOLERANCES:
 <12 [305] ≤ 60 [1524] = ±.1 [25] / -0
 >60 [1524] ≤ 120 [3048] = ±.4 [102] / -0
 >120 [3048] ≤ 300 [7620] = ±.6 [15] / -0

ALL DIMENSIONS ARE FOR REFERENCE ONLY. UNDIMENSIONED NON-CRITICAL FEATURES MAY VARY IN SIZE AND LOCATION. COLORS MAY VARY.

THE INFORMATION CONTAINED IN THIS DRAWING IS THE SOLE PROPERTY OF INFINITE ELECTRONICS, INC. ANY REPRODUCTION IN PART OR WHOLE WITHOUT THE WRITTEN PERMISSION OF INFINITE ELECTRONICS, INC. IS PROHIBITED. THESE COMMODITIES, TECHNOLOGY OR SERVICES ARE EXPORTED FROM THE UNITED STATES IN ACCORDANCE WITH THE EXPORT ADMINISTRATION REGULATIONS. DIVERSION CONTRARY TO U.S. LAW PROHIBITED.

LC 05 Rev-D4 Altize