

RF PCB Connector, F Female straight (End launch), DIP (Thru Hole)



## RFPCB-F-F-S-2G-31

### Configuration

- F Female Connector
- 50 Ohms
- Straight Body Geometry

### Features

- Max Frequency 2 GHz
- Nickel plating

### Applications

- PCB Applications
- General Purpose Test
- Military & Defense

### Description

RFPCB-F-F-S-2G-31 F-type jack PCB connector available from L-com has a 50 Ohm impedance. This RF connector has an end launch connector mount interface and is designed for a wide variety of Printed-Circuit Board (PCB) applications in RF and microwave systems. The F-type connector is available in a 1.00-inch length, 0.40-inch width, and 0.40-inch height.

The L-com F-type jack PCB connector has a copper dielectric type. This F-type PCB connector has a brass body with nickel plating. Our RFPCB-F-F-S-2G-31 F-type connector uses POM contact and tin plating material. The F-type jack connector uses solder as an attachment method. Additional dimensions and specifications for this F-type jack PCB RF connector are on our downloadable PDF datasheet above.

This L-com F-type jack connector will ship the same day as purchased. Our F-type jack connector is part of over 40,000 RF, microwave, and millimeter wave components in stock for worldwide shipment. We also build F-type custom connector cable assemblies that will ship the same day as well.

This F-type jack connector with 50 Ohm impedance has a weight of 0.05 lbs. The RFPCB-F-F-S-2G-31 threaded RF connector has a high-quality construction. We currently have a variety of antenna, audio/video, Ethernet, fiber optic, and USB connectors in our portfolio that are ready to ship today. For further information on similar products, our expert technical support and knowledgeable sales team can help you get the high-quality RF product that meets your requirements.

### Electrical Specifications

Description	Minimum	Typical	Maximum	Units
Frequency Range	DC		2	GHz

### Mechanical Specifications

#### Size

Length	1.00 in [25.40 mm]
Width	0.40 in [10.16 mm]
Height	0.40 in [10.16 mm]
Weight	0.05 lbs [22.68 g]

Click the following link (or enter part number in "SEARCH" on website) to obtain additional part information including price, inventory and certifications:  
[RF PCB Connector, F Female straight \(End launch\), DIP \(Thru Hole\) RFPCB-F-F-S-2G-31](#)

RF PCB Connector, F Female straight (End launch), DIP (Thru Hole)



## RFPCB-F-F-S-2G-31

### Material Specifications

Description	Material	Plating
Contact	POM	TIN
Insulation	P.P	
Body	Brass	Nickel

### Environmental Specifications

**Compliance Certifications** (see [product page](#) for current document)

### Plotted and Other Data

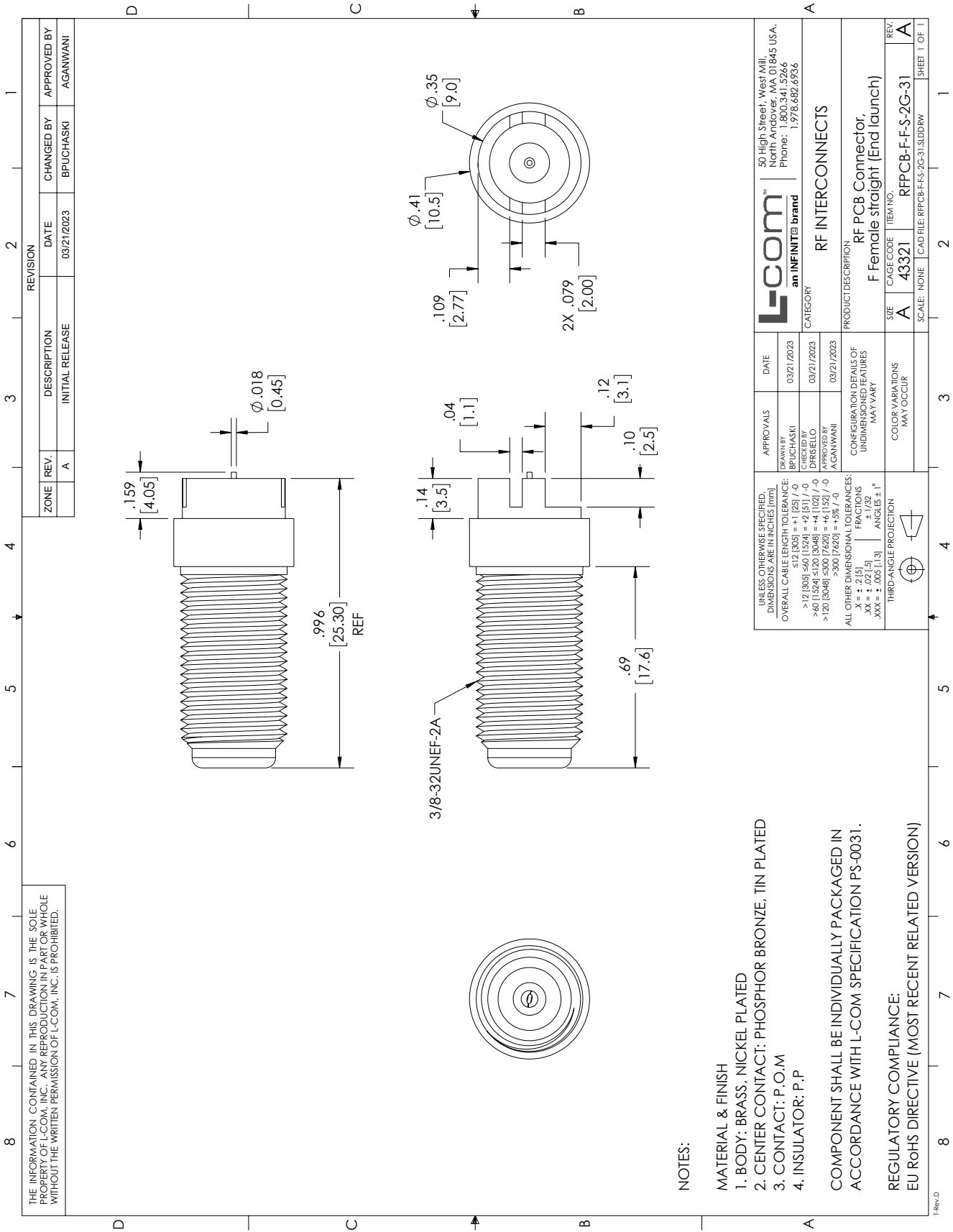
RF PCB Connector, F Female straight (End launch), DIP (Thru Hole) from L-com has same day shipment for domestic and International orders. Our portfolio includes coaxial cable assemblies, connectors, adapters and custom products as well as lightning and surge protectors, NEMA rated enclosures, and an RF product line which includes antennas, amplifiers, passive, and active components. Click the following link (or enter part number in "SEARCH" on website) to obtain additional part information including price, inventory and certifications: RF PCB Connector, F Female straight (End launch), DIP (Thru Hole) RFPCB-F-F-S-2G-31

URL: <https://www.l-com.com/rf-pcb-connector-f-female-straight-end-launch-dip-thru-hole-rfpcb-f-f-s-2g-31-p.aspx>

The information contained within this document is accurate to the best of our knowledge and representative of the part described herein. It may be necessary to make modifications to the part and/or the documentation of the part in order to implement improvements. L-com reserves the right to make such changes as required. Unless otherwise stated, all specifications are nominal. L-com does not make any representation or warranty regarding the suitability of the part described herein for any particular purpose, and L-com does not assume liability arising out of the use of any part or document.ontained within this document is accurate to the best of our knowledge and representative of the part described herein. It may be necessary to make modifications to the part and/or the documentation of the part in order to implement improvements. L-com reserves the right to make such changes as required. Unless otherwise stated, all specifications are nominal. L-com does not make any representation or warranty regarding the suitability of the part described herein for any particular purpose, and L-com does not assume liability arising out of the use of any part or document.

# RF PCB Connector, F Female straight (End launch), DIP (Thru Hole)

## L-com CAD Drawing



### NOTES:

- MATERIAL & FINISH**
- BODY: BRASS, NICKEL PLATED
  - CENTER CONTACT: PHOSPHOR BRONZE, TIN PLATED
  - CONTACT: P.O.M
  - INSULATOR: P.P
- COMPONENT SHALL BE INDIVIDUALLY PACKAGED IN ACCORDANCE WITH L-COM SPECIFICATION PS-0031.
- REGULATORY COMPLIANCE:  
 EU ROHS DIRECTIVE (MOST RECENT RELATED VERSION)