

SSMC Jack Connector Solder Attachment Thru Hole PCB



RFPCB-SMC-FS-12G-197

Configuration

- SSMC Jack Connector
- 50 Ohms
- Straight Body Geometry
- Thru Hole Interface Type
- Solder Attachment

Features

- Max. Operating Frequency 12.4 GHz
- Gold Plated Beryllium Copper Contact
- Contact plating according to MIL-G-45204
- Reliable threaded coupling
- Small SSMC connector form factor (50% smaller than SMA, radially)
- IEC 60169-20 SSMC connector interface
- In stock and ready to ship

Applications

- General Purpose Test
- Space Saving for PCB Applications
- Avionics
- A/D Modules
- Data Acquisition
- Software defined radio (SDR)
- RADAR/SONAR
- Ultra Wideband Digital Receivers
- Medical equipment

Description

RFPCB-SMC-FS-12G-197 SSMC jack PCB connector available from L-com has a 50 Ohm impedance. This RF connector has a Thru Hole connector mount interface and is designed for a wide variety of Printed-Circuit Board (PCB) applications in RF and microwave systems. This SSMC jack connector uses solder as an attachment method. Our jack SSMC PCB connector provides a maximum frequency of 12.4 GHz. The SSMC connector is available in a 0.41-inch length and 0.15-inch width.

The L-com SSMC jack PCB connector has a Teflon dielectric type. This SSMC PCB connector has a Beryllium Copper body with gold plating. Our RFPCB-SMC-FS-12G-197 SSMC connector has a brass contact with gold plating.

This L-com SSMC jack connector will ship the same day as purchased. Our SSMC jack connector is part of over 40,000 RF, microwave, and millimeter wave components in stock for worldwide shipment. We also build SSMC custom connector cable assemblies that will ship the same day as well.

The SSMC jack connector with 50 Ohm impedance has a weight of 0.005 lbs. This threaded RF connector has a high quality construction. The jack coaxial connector is capable of operating at temperatures ranging from -65 deg C to 165 deg C. We currently have a variety of antenna, audio/video, Ethernet, fiber optic, and USB connectors in our portfolio that are ready to ship today. For further information on similar products, our expert technical support and knowledgeable sales team can help you get the high-quality RF that meets your requirements.

Electrical Specifications

Description	Minimum	Typical	Maximum	Units
Frequency Range	DC		12.4	GHz
Insertion Loss			0.3	dB
Operating Voltage (AC)			250	Vrms
High Potential Voltage			400	Vrms

Click the following link (or enter part number in "SEARCH" on website) to obtain additional part information including price, inventory and certifications:
[SSMC Jack Connector Solder Attachment Thru Hole PCB RFPCB-SMC-FS-12G-197](#)

SSMC Jack Connector Solder Attachment Thru Hole PCB



RFPCB-SMC-FS-12G-197

	5 MHz		
Inner Conductor DC Resistance		4	mOhms
Outer Conductor DC Resistance		1	mOhms
Insulation Resistance	1,000		MOhms
RF Leakage	-50		dB

Mechanical Specifications

Size

Length	0.419in	[10.64mm]
Width/Dia.	0.156in	[3.96mm]
Height	0.156in	[3.96mm]
Weight	0.005lbs	[2.27g]
Mating Cycles	500Cycles	
Mating Torque	1.75 to 2in-lbs	0.20 to 0.23Nm

Material Specifications

Description	Material	Plating
Contact	Beryllium Copper	Gold MIL-G-45204
Insulation	Teflon	
Outer Conductor	Beryllium Copper	Gold MIL-G-45204
Body	Brass	Gold MIL-G-45204

Environmental Specifications

Temperature

Operating Range	-65deg C to +165deg C
Shock	Method 213, Condition B, 75G @6ms @1/2 sine
Vibration	Method 204, Condition D (20G)
Salt Spray	Method 101, Condition B, 5% salt solution

Click the following link (or enter part number in "SEARCH" on website) to obtain additional part information including price, inventory and certifications:
[SSMC Jack Connector Solder Attachment Thru Hole PCB RFPCB-SMC-FS-12G-197](#)

SSMC Jack Connector Solder Attachment Thru Hole PCB



RFPCB-SMC-FS-12G-197

Compliance Certifications (see [product page](#) for current document)

Plotted and Other Data

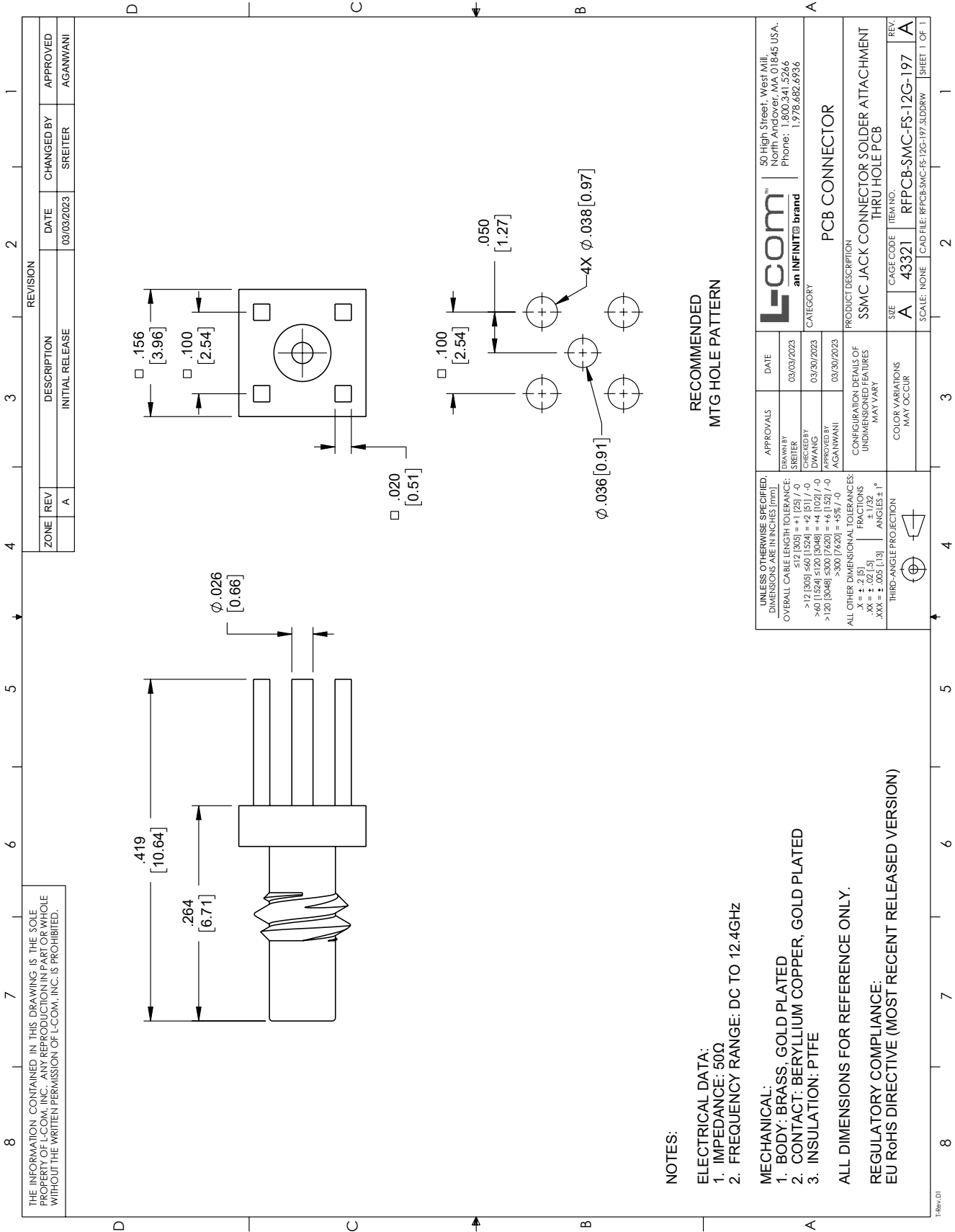
SSMC Jack Connector Solder Attachment Thru Hole PCB from L-com has same day shipment for domestic and International orders. Our portfolio includes coaxial cable assemblies, connectors, adapters and custom products as well as lightning and surge protectors, NEMA rated enclosures, and an RF product line which includes antennas, amplifiers, passive, and active components. Click the following link (or enter part number in "SEARCH" on website) to obtain additional part information including price, inventory and certifications: SSMC Jack Connector Solder Attachment Thru Hole PCB RFPCB-SMC-FS-12G-197

URL: <https://www.l-com.com/ssmc-jack-connector-solder-attachment-thru-hole-pcb-rfpcb-smc-fs-12g-197-p.aspx>

The information contained within this document is accurate to the best of our knowledge and representative of the part described herein. It may be necessary to make modifications to the part and/or the documentation of the part in order to implement improvements. L-com reserves the right to make such changes as required. Unless otherwise stated, all specifications are nominal. L-com does not make any representation or warranty regarding the suitability of the part described herein for any particular purpose, and L-com does not assume liability arising out of the use of any part or document. The information contained within this document is accurate to the best of our knowledge and representative of the part described herein. It may be necessary to make modifications to the part and/or the documentation of the part in order to implement improvements. L-com reserves the right to make such changes as required. Unless otherwise stated, all specifications are nominal. L-com does not make any representation or warranty regarding the suitability of the part described herein for any particular purpose, and L-com does not assume liability arising out of the use of any part or document.

SSMC Jack Connector Solder Attachment Thru Hole PCB

L-com CAD Drawing



THE INFORMATION CONTAINED IN THIS DRAWING IS THE SOLE PROPERTY OF L-COM, INC.. ANY REPRODUCTION IN PART OR WHOLE WITHOUT THE WRITTEN PERMISSION OF L-COM, INC. IS PROHIBITED.

NOTES:

- ELECTRICAL DATA:**
 1. IMPEDANCE: 50Ω
 2. FREQUENCY RANGE: DC TO 12.4GHz

- MECHANICAL:**
 1. BODY: BRASS, GOLD PLATED
 2. CONTACT: BERYLLIUM COPPER, GOLD PLATED
 3. INSULATION: PTFE

ALL DIMENSIONS FOR REFERENCE ONLY.

REGULATORY COMPLIANCE:
 EU RoHS DIRECTIVE (MOST RECENT RELEASED VERSION)

RECOMMENDED MTG HOLE PATTERN

UNLESS OTHERWISE SPECIFIED DIMENSIONS ARE IN INCHES (mm)	APPROVALS	DATE	L-com an INFINITE brand CATEGORY: PCB CONNECTOR
OVERALL CABLE LENGTH TOLERANCE: ≤12 [305] = +1 [25] / 0 >12 [305] ≤60 [1524] = +2 [51] / -0 >60 [1524] ≤120 [3048] = +4 [102] / -0 >120 [3048] ≤300 [7620] = +6 [152] / -0 >300 [7620] = +5% / -0	DRAWN BY SREITER	03/03/2023	
ALL OTHER DIMENSIONAL TOLERANCES: FRACTIONS XX = ± .02 [0.51] XXX = ± .005 [0.13] ANGLES ± 1°	CHECKED BY LWANG	03/30/2023	
THIRD-ANGLE PROJECTION	APPROVED BY AGANWANI	03/30/2023	PRODUCT DESCRIPTION SSMC JACK CONNECTOR SOLDER ATTACHMENT THRU HOLE PCB
	CAGE CODE	ITEM NO.	REV
	A	43321	RFPCB-SMC-FS-12G-197
	SCALE: NONE	CAD FILE: RFPCB-SMC-FS-12G-197.SLDRAW	SHEET 1 OF 1