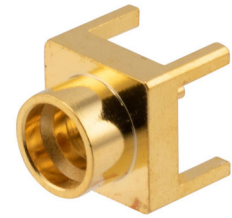


RF PCB Connector, SMP DIRECT SOLDER PLUG



RFPCB-SMP-M-S-40G-20

Configuration

- SMP Male Connector
- 50 Ohms
- Straight Body Geometry

Features

- Max Frequency 40 GHz
- Cu Ni Au plating

Applications

- PCB Applications
- Audio & Video

Description

RFPCB-SMP-M-S-40G-20 SMP plug PCB connector available from L-com has a 50 Ohm impedance. This RF connector is designed for a wide variety of Printed-Circuit Board (PCB) applications in RF and microwave systems. The SMP connector is available in a 0.28-inch length, 0.24-inch width, and 0.24-inch height.

This SMP PCB connector has a brass body with Gold over Nickel over Copper plating. Our RFPCB-SMP-M-S-40G-20 SMP connector uses beryllium copper contact and Gold over Nickel over Copper plating material. The SMP plug connector uses solder as an attachment method. Additional dimensions and specifications for this SMP plug PCB RF connector are on our downloadable PDF datasheet above.

This L-com SMP plug connector will ship the same day as purchased. Our SMP plug connector is part of over 40,000 RF, microwave, and millimeter wave components in stock for worldwide shipment. We also build SMP custom connector cable assemblies that will ship the same day as well.

This SMP plug connector with 50 Ohm impedance has a weight of 0.02 lbs. The RFPCB-SMP-M-S-40G-20 threaded RF connector has a high-quality construction. We currently have a variety of antenna, audio/video, Ethernet, fiber optic, and USB connectors in our portfolio that are ready to ship today. For further information on similar products, our expert technical support and knowledgeable sales team can help you get the high-quality RF product that meets your requirements.

Electrical Specifications

Description	Minimum	Typical	Maximum	Units
Frequency Range	DC		40	GHz

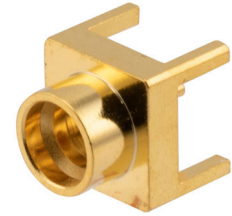
Mechanical Specifications

Size

Length	0.28 in [7.11 mm]
Width	0.24 in [6.10 mm]
Height	0.24 in [6.10 mm]
Weight	0.02 lbs [9.07 g]

Click the following link (or enter part number in "SEARCH" on website) to obtain additional part information including price, inventory and certifications:
[RF PCB Connector, SMP DIRECT SOLDER PLUG RFPCB-SMP-M-S-40G-20](#)

RF PCB Connector, SMP DIRECT SOLDER PLUG



RFPCB-SMP-M-S-40G-20

Material Specifications

Description	Material	Plating
Contact	Beryllium Copper	Gold over Nickel over Copper
Insulation	PTFE	
Body	Brass	Gold over Nickel over Copper

Environmental Specifications

Compliance Certifications (see [product page](#) for current document)

Plotted and Other Data

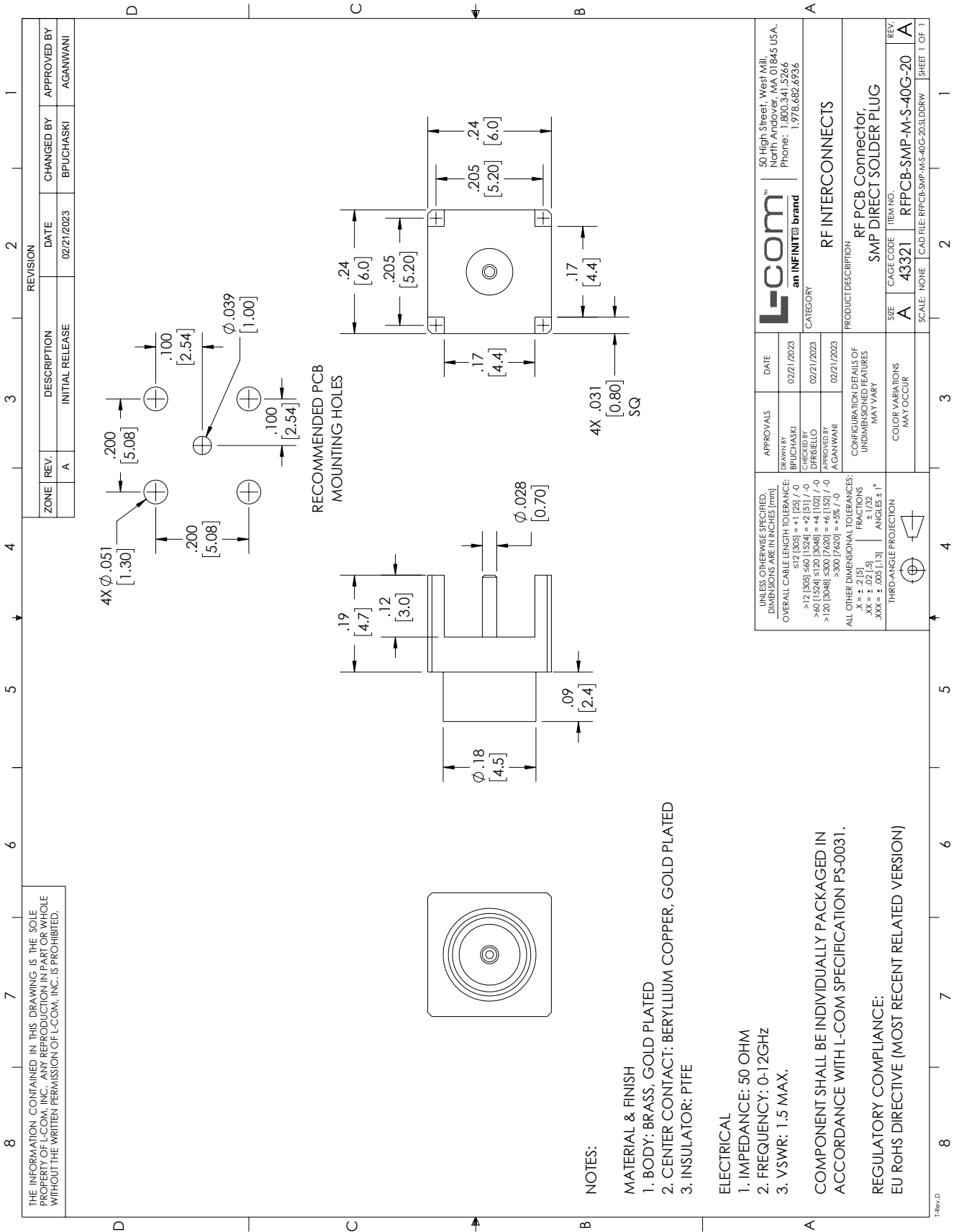
RF PCB Connector, SMP DIRECT SOLDER PLUG from L-com has same day shipment for domestic and International orders. Our portfolio includes coaxial cable assemblies, connectors, adapters and custom products as well as lightning and surge protectors, NEMA rated enclosures, and an RF product line which includes antennas, amplifiers, passive, and active components. Click the following link (or enter part number in "SEARCH" on website) to obtain additional part information including price, inventory and certifications: RF PCB Connector, SMP DIRECT SOLDER PLUG RFPCB-SMP-M-S-40G-20

URL: <https://www.l-com.com/smp-plug-pcb-connector-direct-solder-attachment-brass-1.5-vswr-rfpcb-smp-m-s-40g-20-p.aspx>

The information contained within this document is accurate to the best of our knowledge and representative of the part described herein. It may be necessary to make modifications to the part and/or the documentation of the part in order to implement improvements. L-com reserves the right to make such changes as required. Unless otherwise stated, all specifications are nominal. L-com does not make any representation or warranty regarding the suitability of the part described herein for any particular purpose, and L-com does not assume liability arising out of the use of any part or document.ontained within this document is accurate to the best of our knowledge and representative of the part described herein. It may be necessary to make modifications to the part and/or the documentation of the part in order to implement improvements. L-com reserves the right to make such changes as required. Unless otherwise stated, all specifications are nominal. L-com does not make any representation or warranty regarding the suitability of the part described herein for any particular purpose, and L-com does not assume liability arising out of the use of any part or document.

RF PCB Connector, SMP DIRECT SOLDER PLUG

L-com CAD Drawing



ZONE	REV.	DESCRIPTION	DATE	CHANGED BY	APPROVED BY
A	A	INITIAL RELEASE	02/21/2023	BPUCHASKI	AGANWANI

APPROVALS	DATE
DRAWN BY: BPUCHASKI	02/21/2023
CHECKED BY: DIRIBIELLO	02/21/2023
APPROVED BY: AGANWANI	02/21/2023

UNLESS OTHERWISE SPECIFIED, DIMENSIONS ARE IN INCHES [mm].
 OVER ALL CABLE LENGTH TOLERANCE:
 s12 [305] = +1 [25] / -0
 >12 [305] s60 [1524] = +2 [51] / -0
 >60 [1524] s120 [3048] = +4 [102] / -0
 >120 [3048] s300 [7620] = +6 [152] / -0
 >300 [7620] = +8 / -0
 ALL OTHER DIMENSIONAL TOLERANCES:
 X = ± .015 [0.38]
 XX = ± .005 [0.13]
 XXX = ± .005 [0.13]
 ANGLES ± 1°

THIRD-ANGLE PROJECTION

ITEM NO.	DESCRIPTION	SCALE
A	SMP DIRECT SOLDER PLUG	NONE

CAD FILE: RFPcb-SMP-MS-40G-203.DDRW

SHEET 1 OF 1

RF INTERCONNECTS

RF PCB Connector,
SMP DIRECT SOLDER PLUG

50 High Street, West Mill,
North Andover, MA 01845 USA,
Phone: 1.800.341.5266
1.978.682.6936

an INFINITE brand

L-com

ITEM NO. RFPcb-SMP-MS-40G-20

CAGE CODE 43321

SCALE: NONE

REV. A

1

2

3

4

5

6

7

8

9

10

11

12

13

14

15

16

17

18

19

20

21

22

23

24

25

26

27

28

29

30

31

32

33

34

35

36

37

38

39

40

41

42

43

44

45

46

47

48

49

50

51

52

53

54

55

56

57

58

59

60

61

62

63

64

65

66

67

68

69

70

71

72

73

74

75

76

77

78

79

80

81

82

83

84

85

86

87

88

89

90

91

92

93

94

95

96

97

98

99

100