

SMP Male Full Detent Connector Solder Attachment
Thru Hole PCB, Up To 8 GHz



RFPCB-SMP-MS-8G-205

Configuration

- Full Detent SMP Male Connector
- MIL-STD-348A
- 50 Ohms
- Straight Body Geometry
- Thru Hole Interface Type
- Solder Attachment

Features

- Max. Operating Frequency 8 GHz
- Excellent VSWR of 1.1:1
- Gold Plated Beryllium Copper Contact
- Blind Mate Connector

Applications

- General Purpose Test
- PCB Applications

Description

RFPCB-SMP-MS-8G-205 SMP Male PCB connector available from L-com has a 50 Ohm impedance. This RF connector has a thru hole connector mount interface and is designed for a wide variety of Printed-Circuit Board (PCB) applications in RF and microwave systems. This SMP Male connector uses solder as an attachment method. Our Male SMP PCB connector provides a maximum frequency of 8 GHz. The SMP connector is available in a 0.27-inch length and 0.23-inch width.

The L-com SMP Male PCB connector has a PTFE dielectric type and a VSWR of 1.1:1. This SMC PCB connector has a Beryllium Copper body with gold plating. Our RFPCB-SMP-MS-8G-205 SMP connector has a brass contact with gold plating.

This L-com SMP male connector will ship the same day as purchased. Our SMP male connector is part of over 40,000 RF, microwave, and millimeter wave components in stock for worldwide shipment. We also build SMP custom connector cable assemblies that will ship the same day as well.

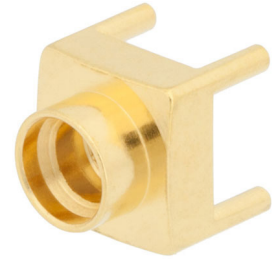
The SMP Male connector with 50 Ohm impedance has a weight of 0.006 lbs. This threaded RF connector has a high quality construction. The jack coaxial connector is capable of operating at temperatures ranging from -65 deg C to 165 deg C. We currently have a variety of antenna, audio/video, Ethernet, fiber optic, and USB connectors in our portfolio that are ready to ship today. For further information on similar products, our expert technical support and knowledgeable sales team can help you get the high-quality RF that meets your requirements.

Electrical Specifications

Description	Minimum	Typical	Maximum	Units
Frequency Range	DC		8	GHz
VSWR			1.1:1	
Operating Voltage (AC)			335	Vrms
Dielectric Withstanding Voltage (AC)			500	Vrms
Inner Conductor DC Resistance			6	mOhms
Outer Conductor DC Resistance			2	mOhms
Insulation Resistance	5,000			MOhms

Click the following link (or enter part number in "SEARCH" on website) to obtain additional part information including price, inventory and certifications:
[SMP Male Full Detent Connector Solder Attachment Thru Hole PCB, Up To 8 GHz RFPCB-SMP-MS-8G-205](#)

SMP Male Full Detent Connector Solder Attachment
Thru Hole PCB, Up To 8 GHz



RFPCB-SMP-MS-8G-205

Electrical Specification Notes:
Insertion loss = 0.13 x sqrt(fGHz) dB max.

Mechanical Specifications

Size

Length	0.279in	[7.09mm]
Width/Dia.	0.236in	[5.99mm]
Height	0.236in	[5.99mm]
Weight	0.006lbs	[2.72g]
Mating Cycles	100Cycles	

Material Specifications

Description	Material	Plating
Contact	Beryllium Copper	Gold
Insulation	PTFE	
Body	Brass	Gold

Environmental Specifications

Temperature	
Operating Range	-65deg C to +165deg C

Compliance Certifications (see [product page](#) for current document)

Plotted and Other Data

SMP Male Full Detent Connector Solder Attachment Thru Hole PCB, Up To 8 GHz from L-com has same day shipment for domestic and International orders. Our portfolio includes coaxial cable assemblies, connectors, adapters and custom products as well as lightning and surge protectors, NEMA rated enclosures, and an RF product line which includes antennas, amplifiers, passive, and active components. Click the following link (or enter part number in "SEARCH" on website) to obtain additional part information including price, inventory and certifications: SMP Male Full Detent Connector Solder Attachment Thru Hole PCB, Up To 8 GHz RFPCB-SMP-MS-8G-205

URL: <https://www.l-com.com/smp-male-full-detent-connector-solder-attachment-thru-hole-pcb-up-8-ghz-rfpcb-smp-ms-8g-205-p.aspx>

The information contained within this document is accurate to the best of our knowledge and representative of the part described herein. It may be necessary to make modifications to the part and/or the documentation of the part in order to implement improvements. L-com reserves the right to make such changes as required. Unless otherwise stated, all specifications are nominal. L-com does not make any representation or warranty regarding the suitability of the part described herein for any particular purpose, and L-com does not assume liability arising out of the use of any part or document contained within this document is accurate to the best of our knowledge and representative of the part described herein. It may be necessary to make modifications to the part and/or the documentation of the part in order to implement improvements. L-com reserves the right to make such changes as required. Unless otherwise stated, all

SMP Male Full Detent Connector Solder Attachment Thru Hole PCB, Up To 8 GHz

L-com CAD Drawing

